

# Commercial Property for Sale in Ramsey

14391 AZURITE STREET NW | RAMSEY, MN

2,644 Sq. Ft. Building

2.41 Acre Site

I-1 Light Industrial Zoning



## Cetra Partners

4455 White Bear Parkway, Suite 600  
White Bear Lake, MN 55110

Dan Friedner | Principal  
M: 612-599-7864  
E: dan@cetrapartners.com

Jay Chmielecki | Principal  
M: 612-275-3772  
E: jay@cetrapartners.com

Patrick Cullen | Principal  
M: 651-308-4271  
E: patrick@cetrapartners.com

# Property Overview

## LOCATION

14391 Azurite Street NW | Ramsey, MN

## BUILDING SIZE

Approx. 2,644 Sq. Ft. Total

## SITE SIZE

2.41 Acres

## SALE PRICE

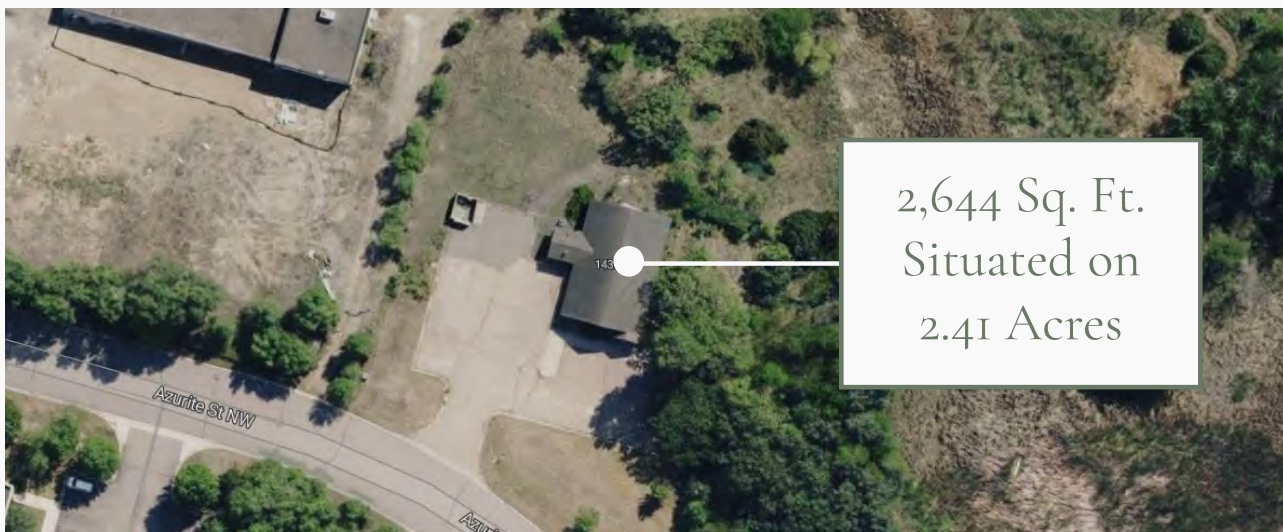
\$575,000

## 2026 EST. RE TAXES

\$5,160.12

## PROPERTY HIGHLIGHTS

- Central Ramsey location
- Possible expansion opportunity
- Built in 2004
- Anoka County PID: 27-32-25-41-0011
- I-1 Light Industrial Zoning permits a variety of different uses, including:
  - Office
  - Warehouse
  - Research labs
  - Light manufacturing



# Commercial Property for Sale in Ramsey

14391 AZURITE STREET NW | RAMSEY, MN

GIS Map -  
2.41 Acre Site



Cetra Partners

Dan Friedner | Principal  
M: 612-599-7864  
E: dan@cetrapartners.com

Jay Chmielecki | Principal  
M: 612-275-3772  
E: jay@cetrapartners.com

Patrick Cullen | Principal  
M: 651-308-4271  
E: patrick@cetrapartners.com

cetrapartners.com

# Commercial Property for Sale in Ramsey

14391 AZURITE STREET NW | RAMSEY, MN

Aerial Map View -  
2,644 Sq. Ft. Total

