



FOR SALE OR LEASE

6312
East 101st
Street

TULSA, OK 74137

CBRE

PROPERTY DESCRIPTION

6312 East 101st Street is a 10,946 square foot office building with a premier South Tulsa location, offering custom upscale finishes, a patio, elevator, and a two-car garage. It is conveniently located within one mile of the 101st Street and South Memorial Drive (53,824 VPD) corridor, home to many popular retail centers and restaurants.

- 10,946 SF
- 0.79 AC
- 35 Surface Parking Spaces
- 2 Car Garage
- Built in 2012
- Zoning - PUD 431B



PROPERTY PHOTOS



CREEK TURNPIKE

S. MEMORIAL DR.

E. 101ST STREET

SUBWAY

LOUIE'S

6312
East 101st Street

QUIKTRIP

PETSMART

HOMEGOODS

COSTCO

CHIPOTLE

CAVA

TARGET

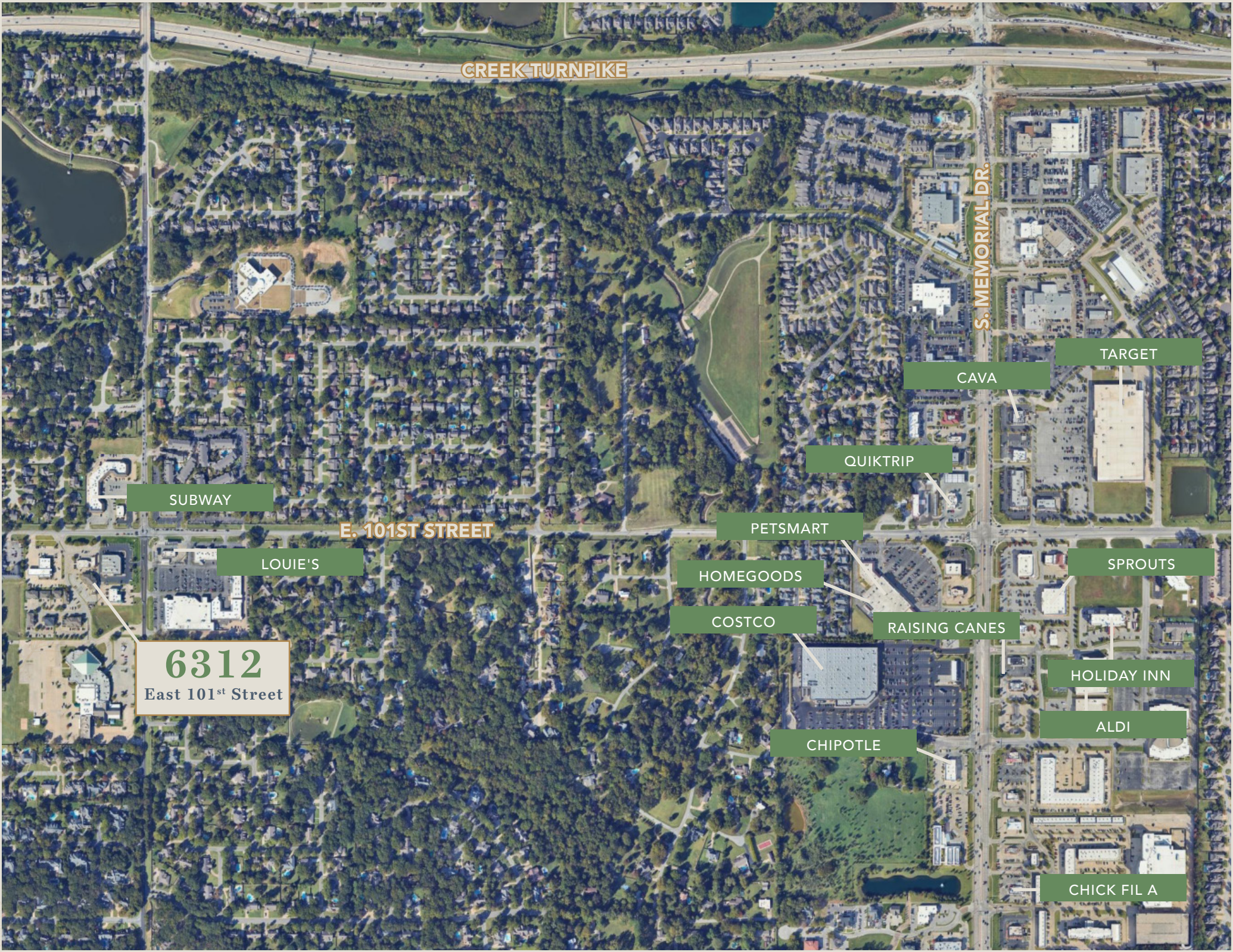
RAISING CANES

SPROUTS

HOLIDAY INN

ALDI

CHICK FIL A



6312

East 101st Street

TULSA, OK 74137

CONTACT US

Carrie Claiborne

Senior Associate
+1 918 906 0224
carrie.claiborne@cbre.com

Leslie Kirkpatrick Cornell, MBA

Senior Associate
+1 918 557 2231
leslie.kirkpatrick@cbre.com



© 2024 CBRE, Inc. All rights reserved. This information has been obtained from sources believed reliable, but has not been verified for accuracy or completeness. You should conduct a careful, independent investigation of the property and verify all information. Any reliance on this information is solely at your own risk. CBRE and the CBRE logo are service marks of CBRE, Inc. All other marks displayed on this document are the property of their respective owners, and the use of such logos does not imply any affiliation with or endorsement of CBRE. Photos herein are the property of their respective owners. Use of these images without the express written consent of the owner is prohibited.

CBRE