

±272,448 SF

JURUPA INDUSTRIAL CENTER

1291 S Vintage Ave | Ontario, CA

For Lease

High Image Industrial Center

Jurupa Industrial Center is uniquely positioned in the heart of the Inland Empire's Logistics hub.

Strategically located within 1 mile of the I-10 and I-15 freeways, the site offers unparalleled access to major transportation routes.



±3,180 SF
Office Space

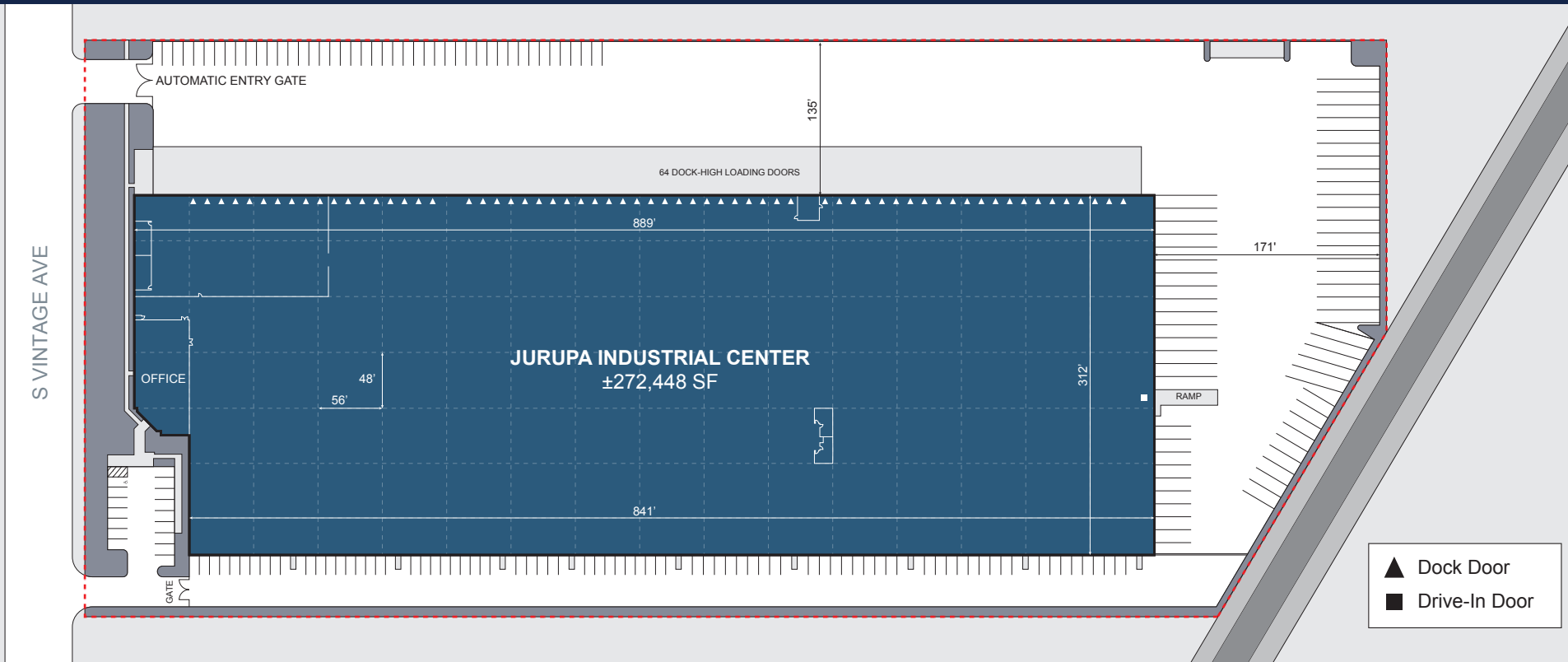
1 Ground Level
Loading Door

64 Dock High Loading Doors

135'

171'

Building Features | ±272,448 SF Freestanding Industrial Building



Freestanding ±272,448 SF Industrial Building

Approximately ±3,180 SF of Updated Office Space

Updated Warehouse Restrooms

135' truck court

±1.75 Acre dedicated & Fully Secured Yard Area

48' x 56' Typical Column Spacing

3,000 Amps 277/480 Volt 3 Phase- Expandable (Verify)

64 Dock-high Loading Doors (18 with Load Levelers)

1 Ground Level Loading Door (Ramp)

3 Forklift Charging Stations

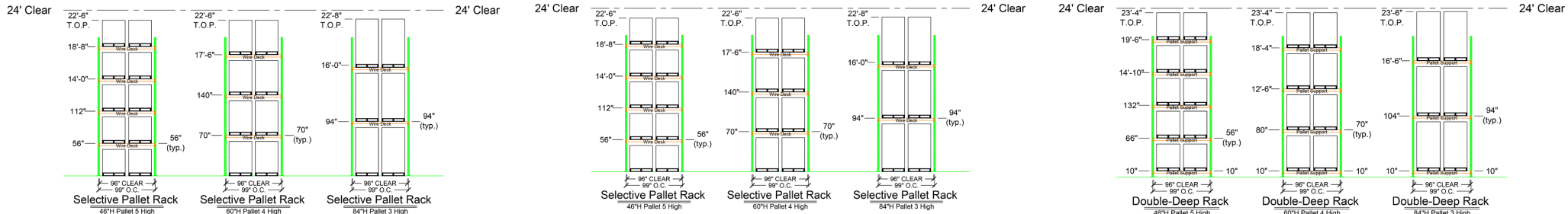
2 Big Ass Fans

25'-30' Warehouse Ceiling Clearance

LED Warehouse Lighting

ESFR Sprinkler Upgrade Underway

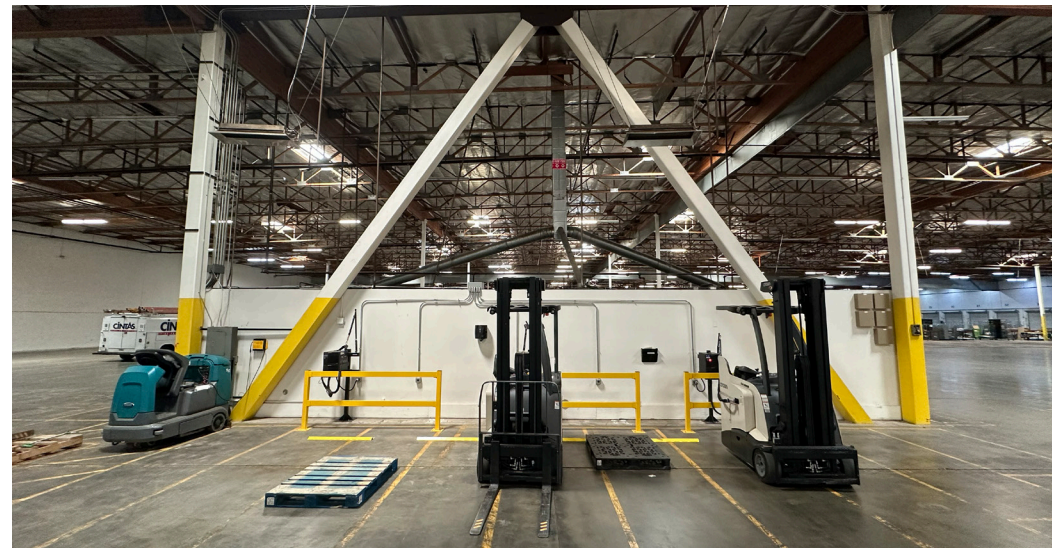
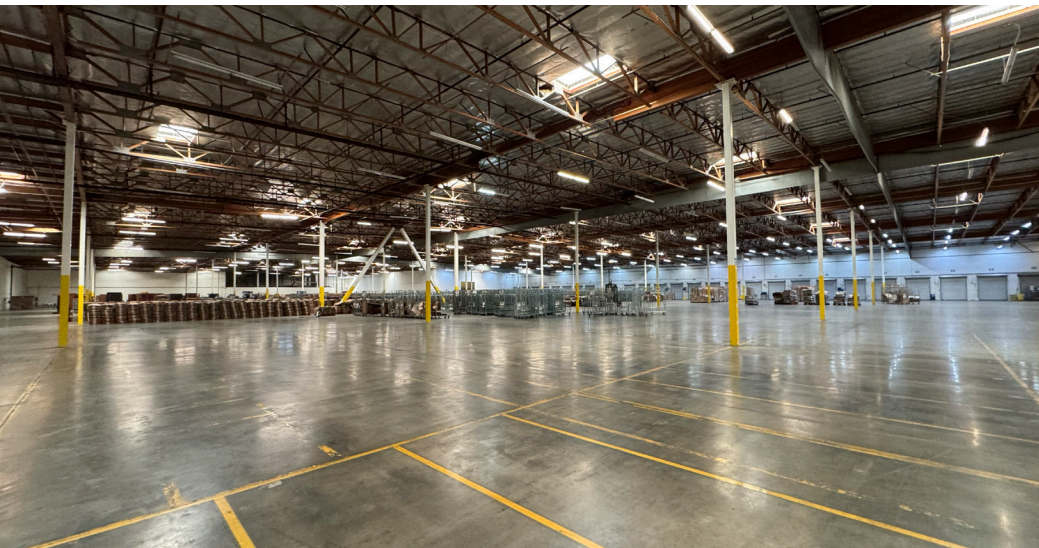
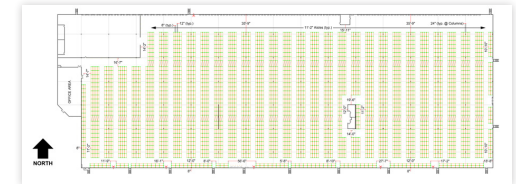
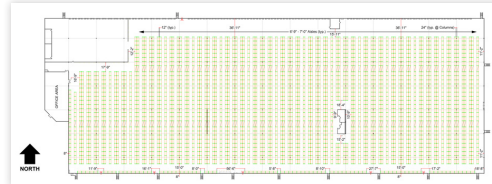
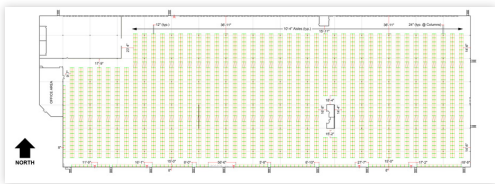
Pallet Positions & Height | 24' Clear Height



SELECTIVE STANDARD		
3 OF BAYS	PALLET HEIGHT	PALLET POSITIONS
2,584	46"	25,208
	60"	19,882
	84"	15,030

VERY NARROW AISLE		
3 OF BAYS	PALLET HEIGHT	PALLET POSITIONS
3,021	46"	29,462
	60"	23,233
	84"	17,565

DOUBLE DEEP		
3 OF BAYS	PALLET HEIGHT	PALLET POSITIONS
3,538	46"	34,768
	60"	27,539
	84"	20,769







For More Information, Please Contact:

Wes Jones

Executive Vice President

+1 909 418 2070

wes.jones@cbre.com

Lic. 01783489

James Toomarian

First Vice President

+1 909 418 2083

james.toomarian@cbre.com

Lic. 02030414

Andrew Chaffee

Senior Associate

+1 909 418 2098

andrew.chaffee@cbre.com

Lic. 02168894

 **Hager Pacific**
Properties

CBRE