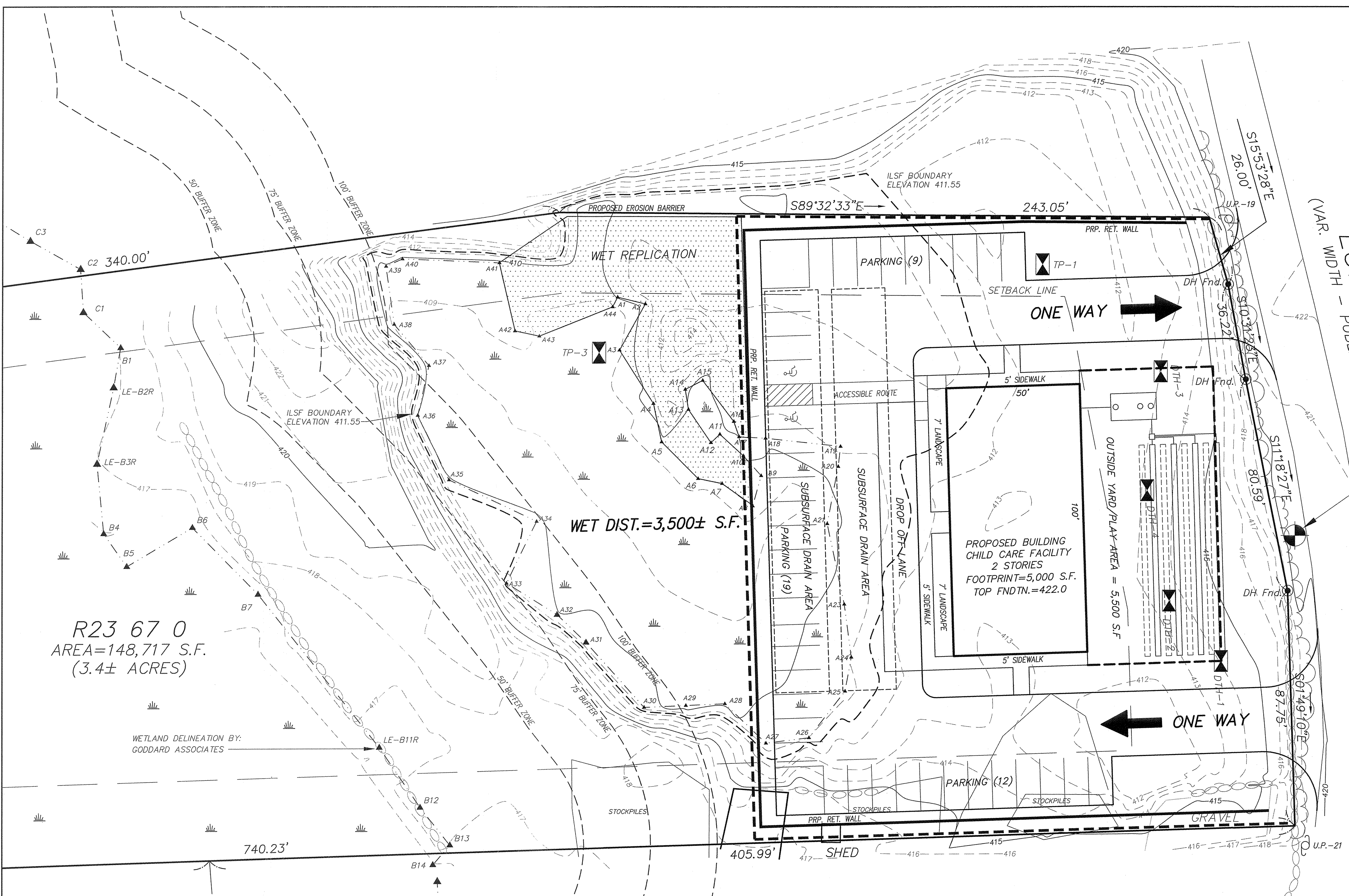


CONSTRUCTION NOTES:

- EXISTING UTILITY LINES SHOWN ON THIS DRAWING ARE FROM AVAILABLE INFORMATION AND ARE APPROXIMATE LOCATIONS. THE ENGINEER DOES NOT GUARANTEE THEIR ACCURACY OR THAT ALL UTILITIES AND SUBSURFACE STRUCTURES ARE SHOWN. THE CONTRACTOR SHALL VERIFY SIZE, LOCATION AND INVERT ELEVATIONS OF THE UTILITIES AND STRUCTURES, AS REQUIRED PRIOR TO THE START OF CONSTRUCTION. ANY DISCREPANCIES WITH RECORD DATA SHALL BE REPORTED TO THE ENGINEER IMMEDIATELY. THE CONTRACTOR SHALL CONTACT DIG SAFE: 1-800-344-7233 (72 HOURS BEFORE DIGGING), AND TOWN DPW FOR UTILITY LOCATIONS PRIOR TO EXCAVATION. TEST PITS SHALL BE UTILIZED FOR UTILITY CONNECTIONS.
- WHERE AN EXISTING UTILITY IS FOUND TO CONFLICT WITH THE PROPOSED WORK, THE LOCATION, ELEVATION, AND SIZE OF THE UTILITY SHALL BE ACCURATELY DETERMINED WITHOUT DELAY BY THE CONTRACTOR AND THE INFORMATION FURNISHED TO THE ENGINEER FOR RESOLUTION OF THE CONFLICT.
- ALL MATERIALS AND CONSTRUCTION PRACTICES SHALL BE IN CONFORMANCE WITH THE STANDARDS AND SPECIFICATIONS OF THE NORTHBOROUGH DEPARTMENT OF PUBLIC WORKS, OR THE LATEST EDITION OF THE MASSACHUSETTS HIGHWAY DEPARTMENT (MHD) CONSTRUCTION STANDARDS AND THE MHD "STANDARD SPECIFICATIONS FOR HIGHWAYS AND BRIDGES", WHICHEVER IS MORE STRINGENT.
- THE WATER SYSTEM SHALL BE INSTALLED IN COMPLIANCE WITH THE TOWN OF NORTHBOROUGH DPW WATER DIVISION RULES AND REGULATIONS. CONNECTIONS SHALL BE MADE IN ACCORDANCE WITH APPLICABLE PERMITS (TO BE OBTAINED BY THE CONTRACTOR).
- THE SEWER SYSTEM SHALL BE INSTALLED IN COMPLIANCE WITH THE TOWN OF NORTHBOROUGH DPW SEWER DIVISION RULES AND REGULATIONS. CONNECTIONS SHALL BE MADE IN ACCORDANCE WITH APPLICABLE PERMITS (TO BE OBTAINED BY THE CONTRACTOR). INVERTS AT THE PROPOSED BUILDING SHALL BE COORDINATED WITH THE ARCHITECTURAL DRAWINGS PRIOR TO CONSTRUCTION.
- IT SHALL BE THE RESPONSIBILITY OF THE CONTRACTOR, TO KEEP ACCURATE AS-BUILT MEASUREMENTS / RECORDS OF ALL UNDERGROUND OR CONCEALED WORK.
- THE LAYOUT AND INSTALLATION OF ELECTRIC, GAS, TELEPHONE AND CATV UTILITY CONNECTIONS AND SERVICES SHALL IN ACCORDANCE WITH THE REQUIREMENTS OF THE RESPECTIVE UTILITY.
- THE CONTRACTOR SHALL UTILIZE ALL MEASURES AND MATERIALS NECESSARY TO ENSURE THE SAFETY OF ALL PERSONS AND PROPERTIES AT THE SITE DURING CONSTRUCTION. ALL EXCAVATIONS SHALL CONFORM TO CURRENT OSHA STANDARDS.
- IT SHALL BE THE RESPONSIBILITY OF THE CONTRACTOR TO COORDINATE HIS WORK WITH THE APPROPRIATE HIGHWAY & UTILITY DEPARTMENTS. WORK WITHIN THE HIGHWAY LAYOUT SHALL CONFORM TO THE CONDITIONS OF THE PERMIT ISSUED BY MASSACHUSETTS DEPARTMENT OF TRANSPORTATION HIGHWAY DIVISION OR THE LOCAL AUTHORITY.
- ALL SIGN SIZES AND MATERIAL SHALL CONFORM TO THE "MANUAL ON UNIFORM TRAFFIC DEVICES" (MUTCD) AND THE OFFICE OF TRAFFIC OPERATIONS, FEDERAL HIGHWAY ADMINISTRATION, U.S. DEPARTMENT OF TRANSPORTATION.
- ALL RAMPS, CURB CUTS, SIDEWALKS, AND ACCESSIBLE SPACES SHALL COMPLY WITH THE AMERICANS WITH DISABILITIES ACT REGULATIONS AND WITH ARCHITECTURAL ACCESS BOARD REGULATIONS (521 CMR 1-47).
- AREAS OUTSIDE THE LIMITS OF PROPOSED WORK DISTURBED BY THE CONTRACTOR'S OPERATIONS SHALL BE RESTORED BY THE CONTRACTOR TO THEIR ORIGINAL CONDITION AT NO EXPENSE TO THE OWNER.
- JOINTS BETWEEN PROPOSED BITUMINOUS CONCRETE PAVEMENT AND EXISTING PAVEMENT TO REMAIN SHALL BE SAWCUT AND SEALED WITH HOT POURED RUBBERIZED ASPHALT SEALER. ALL TRENCHES SHALL BE COMPLETED IN ACCORDANCE WITH THE NORTHBOROUGH DPW AND/OR MASS DOT REGULATIONS.

PLAN No. 262 OF 1995

BENCHMARK
NAIL-S, UP#1-35/2
ELEV.=421.21
(NAVD 1988)



R23 67 0
AREA=148,717 S.F.
(3.4± ACRES)

LEGEND

	DRAIN MAN HOLE		UTILITY POLE & GUY WIRE
	DRAINAGE LINE		CHAIN LINK FENCE
	CATCH BASIN		LIGHTPOST
	SEWER LINE		HANDICAP SPACE
	SEWER MAN HOLE		ELECTRIC TRANSFORMER
	BITUMINOUS CURBING		SIGN
	EDGE OF PAVEMENT		VERTICAL BENCHMARK
	GUARD RAIL		DECIDUOUS TREE >8"
	APPROX. WATERLINE		CONIFEROUS TREE >8"
	HYDRANT		TREELINE
	WATERGATE		SPOT GRADE
	APPROX. GAS LINE		WETLAND LINE
	GAS GATE		TELEPHONE MAN HOLE

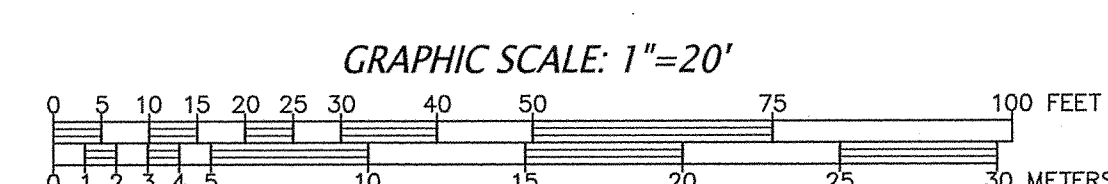
SOIL TEST LOGS

DTH-1 (6-1-21)	EL.=414.0	DTH-2 (6-1-21)	EL.=413.5	DTH-3 (6-1-21)	EL.=413.0
0-11" Ap	SANDY LOAM 10YR3/2	0-13" Ap	SANDY LOAM 10YR3/2	0-12" Ap	SANDY LOAM 10YR3/2
11-29" Bw	LOAMY SAND 10YR6/8	13-26" Bw	LOAMY SAND 10YR6/8	12-34" Bw	LOAMY SAND 10YR6/8
29-88" C1	MEDIUM SAND 10YR6/4	26-58" C1	FINE SAND 7.5YR6/3	34-58" C1	SANDY LOAM 10YR5/4
88-116" C2	COARSE SAND 2.5Y5/4	58-111" C2	MEDIUM SAND 10YR6/4	58-86" C2	MEDIUM SAND 10YR6/4
MOTTLES AT 57" WATER AT 96"		111-121" C3	COARSE SAND 2.5Y5/4	86-114" C3	COARSE SAND 2.5Y5/4
		MOTTLES AT 36" WATER AT 91"		MOTTLES AT 42" WATER AT 76"	

DTH-4 (6-1-21)	EL.=413.0	TP-1 BY: GODDARD ASSOC.	TP-3 BY: GODDARD ASSOC.
0-11" Ap	SANDY LOAM 10YR3/2	0-12" Ap	LOAMY SAND 10YR3/4
11-30" Bw	LOAMY SAND 10YR6/8	12-19" Bw	LOAMY SAND 10YR6/8
30-54" C1	SANDY LOAM 10YR5/4	19-57" C1	MEDIUM SAND 10YR6/4
54-77" C2	MED.-CRS. SAND 2.5Y5/4	57-84" C2	MEDIUM SAND 2.5Y7/1
77-109" C3	FINE SAND 7.5YR6/1	84-93" C3	FINE SAND 10YR6/1
MOTTLES AT 48" WATER AT 77"		MOTTLES AT 84"	
		MOTTLES AT 43"	

MONUMENTS

	STONE BOUND W. DRILL HOLE FOUND
	STONE BOUND FOUND
	IRON PIPE FOUND



**CONNORSTONE
ENGINEERING INC.**
CIVIL ENGINEERS AND LAND SURVEYORS
10 SOUTHWEST CUTOFF, SUITE 7
NORTHBOROUGH, MASSACHUSETTS 01532
PHONE: 508-393-9727 FAX: 508-393-5242

SKETCH PLAN
OF
LUMBER STREET
PARCEL R23-67-0
HOPKINTON, MASS.

REVISED:	DESCRIPTION:
DRAWN BY: REM	CHECK BY: VC
DATE: MARCH 2022	
SCALE: 1"=20'	SHEET 1 OF 1.