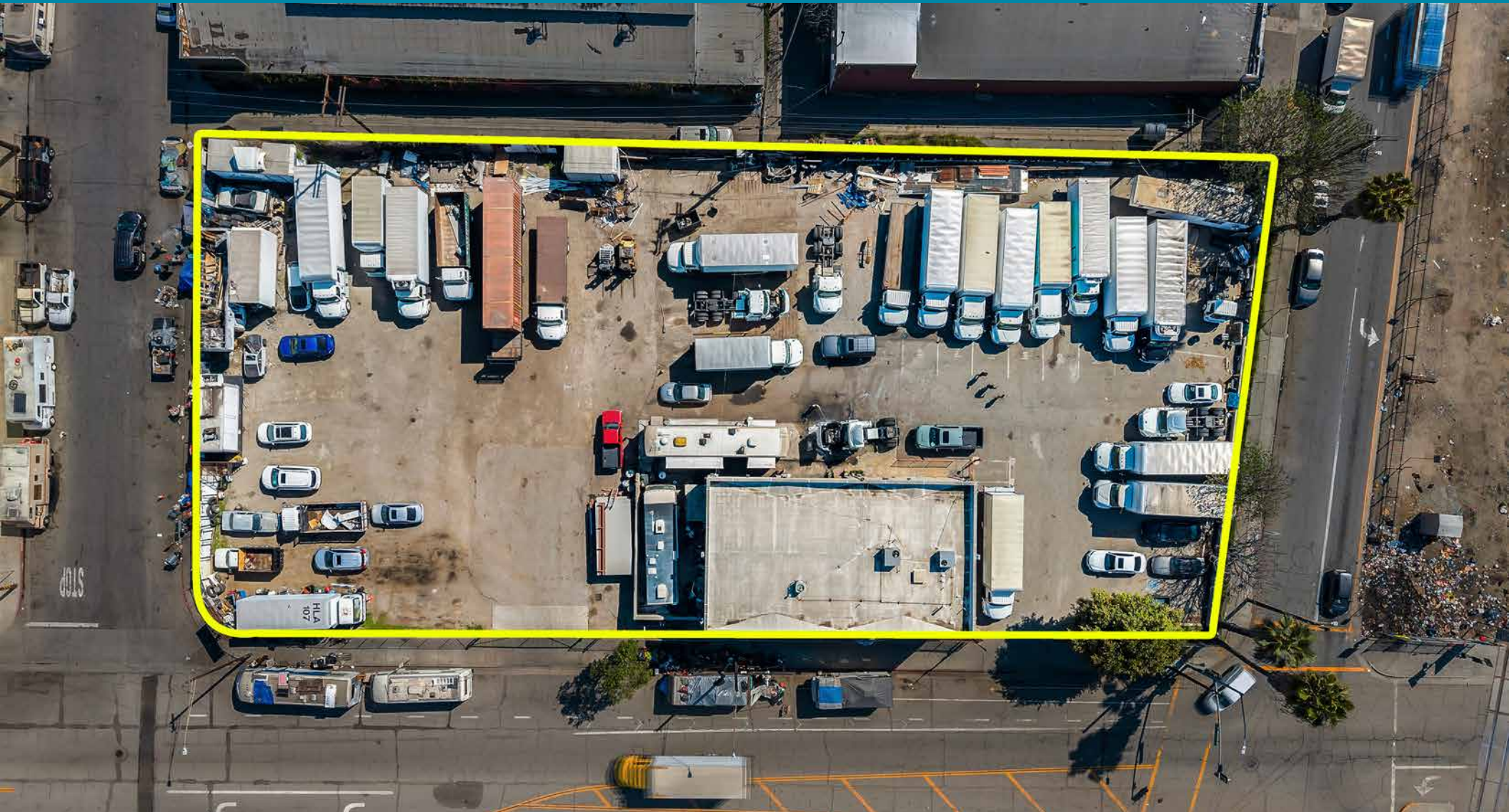


TRUCK PARKING/OUTDOOR STORAGE LOT

41,420± SF of Land For Sale or Lease



1808 E 58TH PLACE, LOS ANGELES, CA 90001

1808 E 58TH PLACE, LOS ANGELES, CA 90001

Property Details

Building Area:	4,040± SF
Land Area (Per Plat Map):	41,420± SF
Land Use:	Light Industrial
APN:	6009-004-035
Frontage:	250' on Holmes Ave 118' on 58th Place 135' on Randolph Street

Property Highlights

- Asphalt paved lot ideal for truck/trailer parking or contractor's storage yard
- Includes 2-story concrete block building built 1995
- Ground floor warehouse plus first and second floor offices with lobby, kitchenette, and restrooms
- Block-to-block property between 58th Place and Randolph Street
- Located across from Lillian Street Elementary School and Genesis Metals & Hardware Supply
- Midway between the 110, 710 and I-10 Freeways

Sale Price: \$4,500,000 (\$108.64 Per SF Land)

Lease Rental: \$24,000 Per Month (\$0.58 Per SF Land)

Term: Submit | Available Now!





Metro A Line Light Rail

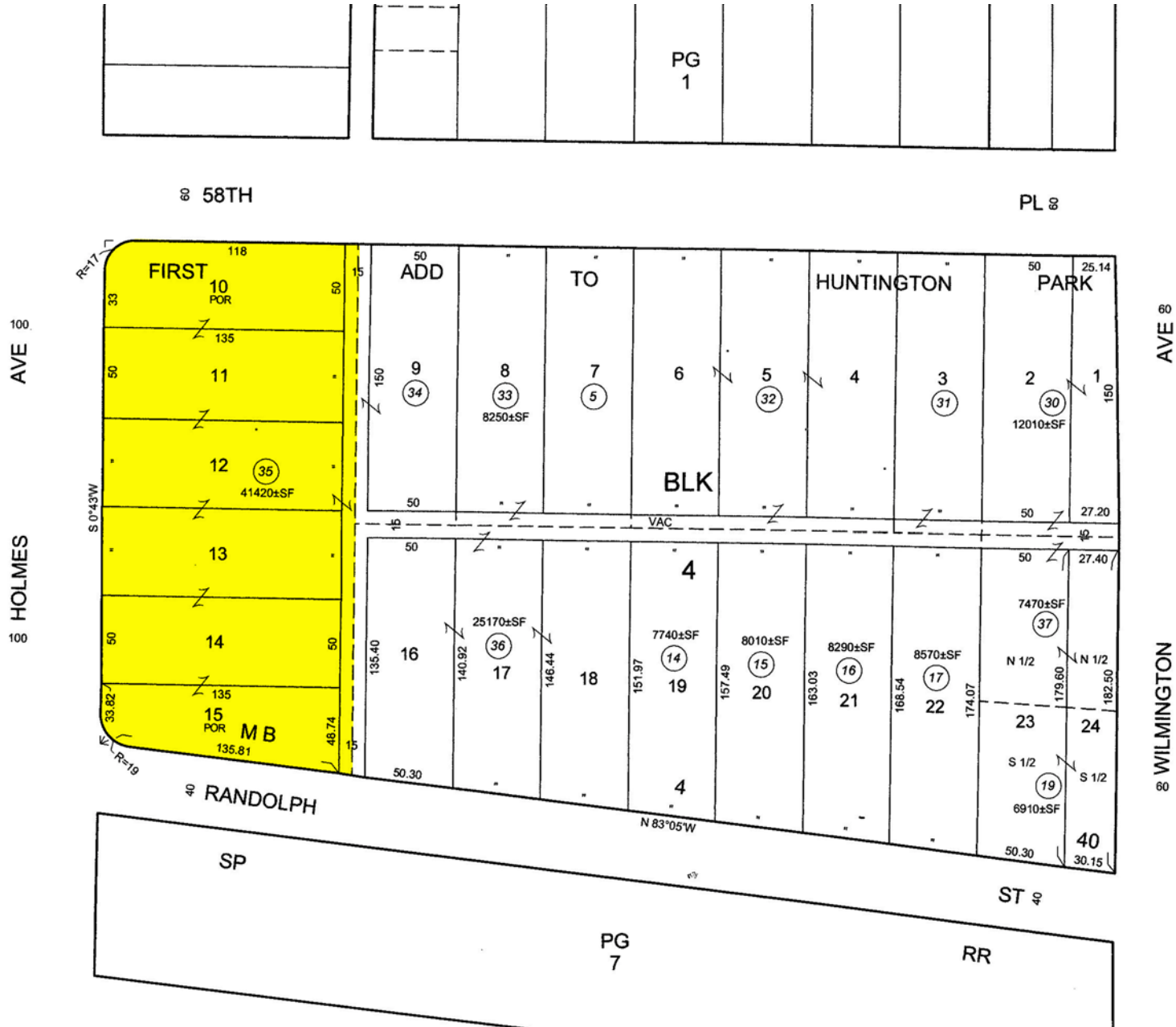
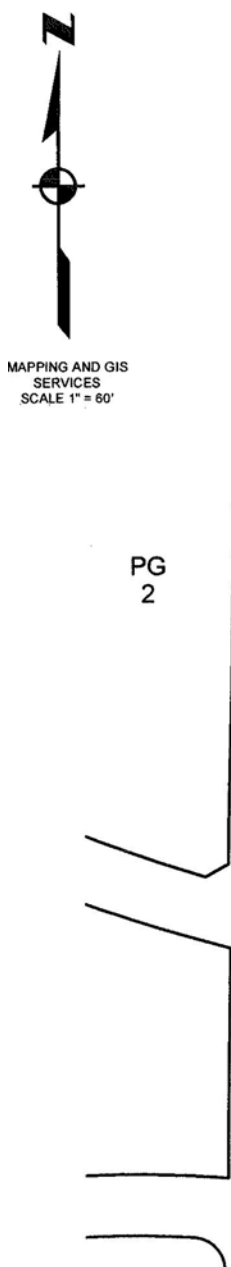
Randolph St

Holmes Ave

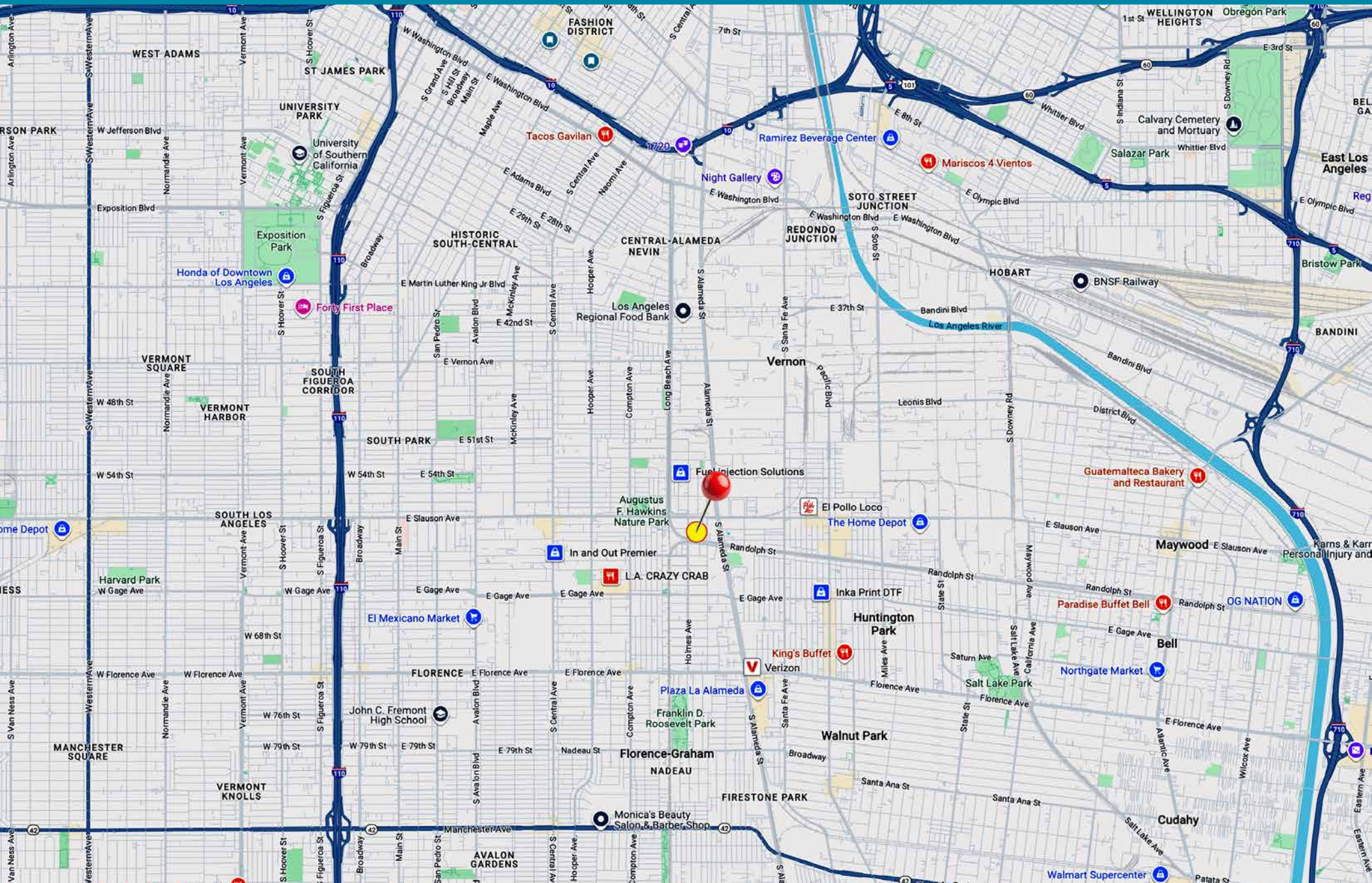
58th Pl



PLAT MAP



AREA MAP



FOR SALE OR LEASE 1808 E 58TH PLACE, LOS ANGELES, CA 90001

TRUCK PARKING/OUTDOOR STORAGE LOT 4,040± SF Building on 41,420± SF of Land

The information contained in this offering material is confidential and furnished solely for the purpose of a review by prospective Tenants of the subject property and is not to be used for any other purpose or made available to any other person without the express written consent of Major Properties or Compass.

This Brochure was prepared by Major Properties and Compass. It contains summary information pertaining to the Property and does not purport to be all-inclusive or to contain all of the information that a prospective Tenant may desire. All information is provided for general reference purposes only and is subject to change. The summaries do not purport to be complete or accurate descriptions of the full documents involved, nor do they constitute a legal analysis of such documents.

This information has been secured from sources we believe to be reliable. We make no representations or warranties, expressed or implied, as to the accuracy of the information. References to square footage or age are approximate. Recipient of this report must verify the information and bears all risk for any inaccuracies.

Exclusively offered by:

Anthony S Behar
Executive Vice President

310.880.2329

anthony@majorproperties.com

DRE LIC. 01368565



MAJOR PROPERTIES
REAL ESTATE
Commercial & Industrial Specialists