



OVER 75,000 SF
Available Space



Healthpeak®

DOC
LISTED
NYSE

 CUSHMAN &
WAKEFIELD

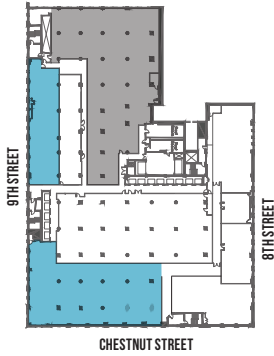
ABOUT THE BUILDING

A Newly Renovated Historic Center City Location, Offering Dynamic Open Spaces

- Featuring Large 50,000 Sf + Floor Plates
- Excellent Public Transportation
- Historic Architecture and Modern Amenities
- Proximity to Retail, Restaurants and Green Space
- New Elevators, Dedicated Bike Room and Lobby
- 24-Hour On-Site Security

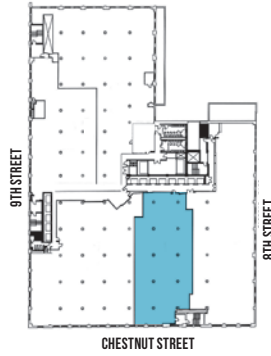


CURRENT AVAILABILITIES



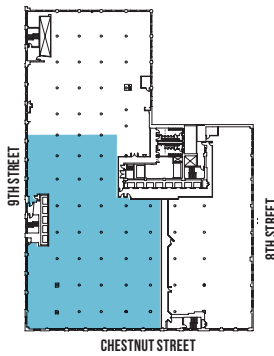
8TH FLOOR

SUITE 830 10,489 SF
SUITE 830A 4,747 SF
SUITE 800A 13,729 SF (DATA CENTER)



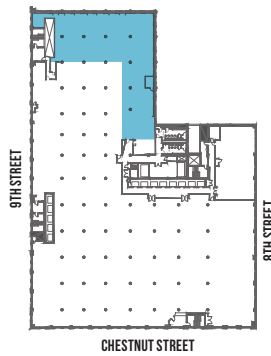
9TH FLOOR

SUITE 930 7,839 SF



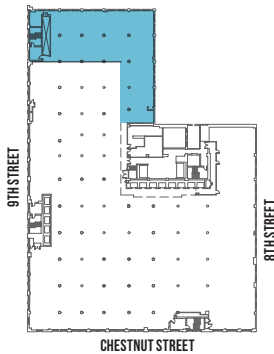
11TH FLOOR

SUITE 1120 21,332 SF



12TH FLOOR

8,572 SF



14TH FLOOR

SUITE 1402 7,687 SF





4 OUT OF THE TOP 5:



Center city neighborhoods with the **highest concentration of millenials** are east of Broad Street



Most educated neighborhoods in center city are east of Broad Street



Most affluent neighborhoods are east of Broad Street



DOC
LISTED
NYSE

JACK MEYERS

EXECUTIVE DIRECTOR

+1 215 963 4054

jack.meyers@cushwake.com

DAN BROGAN

SENIOR DIRECTOR

+1 215 963 4040

dan.brogan@cushwake.com