

60 W SUNBRIDGE DR, SUITE 1, FAYETTEVILLE

# OFFICE SPACE FOR LEASE



**COREY FUHRMAN**  
OFFICE SPECIALIST  
479.504.2034  
COREY@FOCUSCREGROUP.COM

**OKSANA DEMARIS**  
OFFICE SPECIALIST  
479.372.0033  
OKSANA@FOCUSCREGROUP.COM



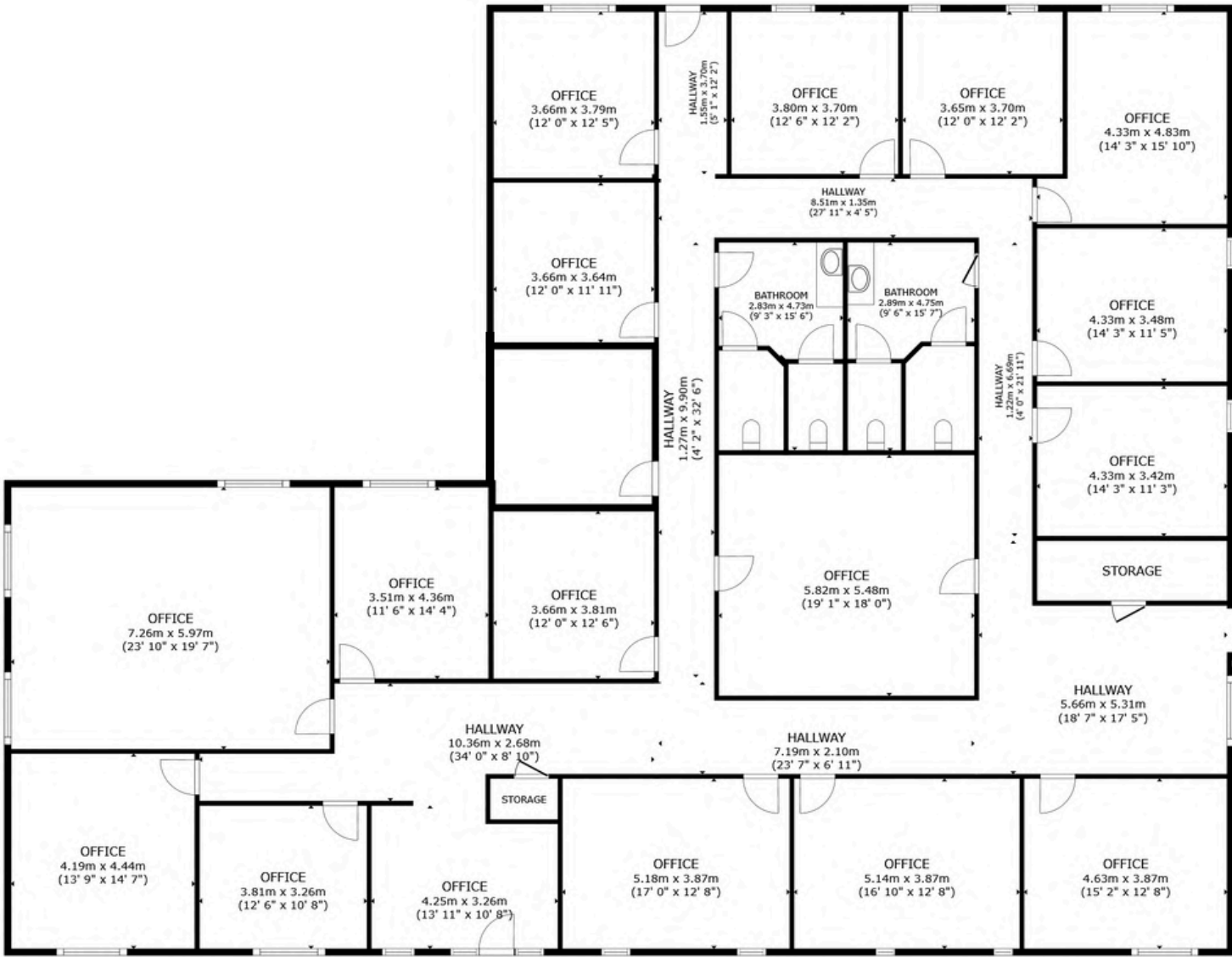
LEASE OVERVIEW

AVAILABLE:	5,155 SF
RENTAL RATE:	\$18.00 PSF
LEASE TYPE:	MODIFIED GROSS

PROPERTY HIGHLIGHTS

THIS 5,155 SF, MOVE-IN READY OFFICE SPACE OFFERS A BRIGHT, EFFICIENT LAYOUT WITH AMPLE WINDOWS FOR NATURAL LIGHT AND A CONVENIENT LOCATION BETWEEN COLLEGE AVE. AND GREGG AVE. POSITIONED JUST 1.5 MILES FROM INTERSTATE-49 AND NEAR THE RAZORBACK GREENWAY, THIS PROPERTY PROVIDES EXCELLENT ACCESSIBILITY FOR EMPLOYEES AND CLIENTS ALIKE. OFFERED ON A MODIFIED GROSS LEASE, IT’S AN IDEAL OPPORTUNITY FOR BUSINESSES SEEKING QUALITY SPACE IN A CENTRAL FAYETTEVILLE LOCATION.

VIRTUAL TOUR LINK



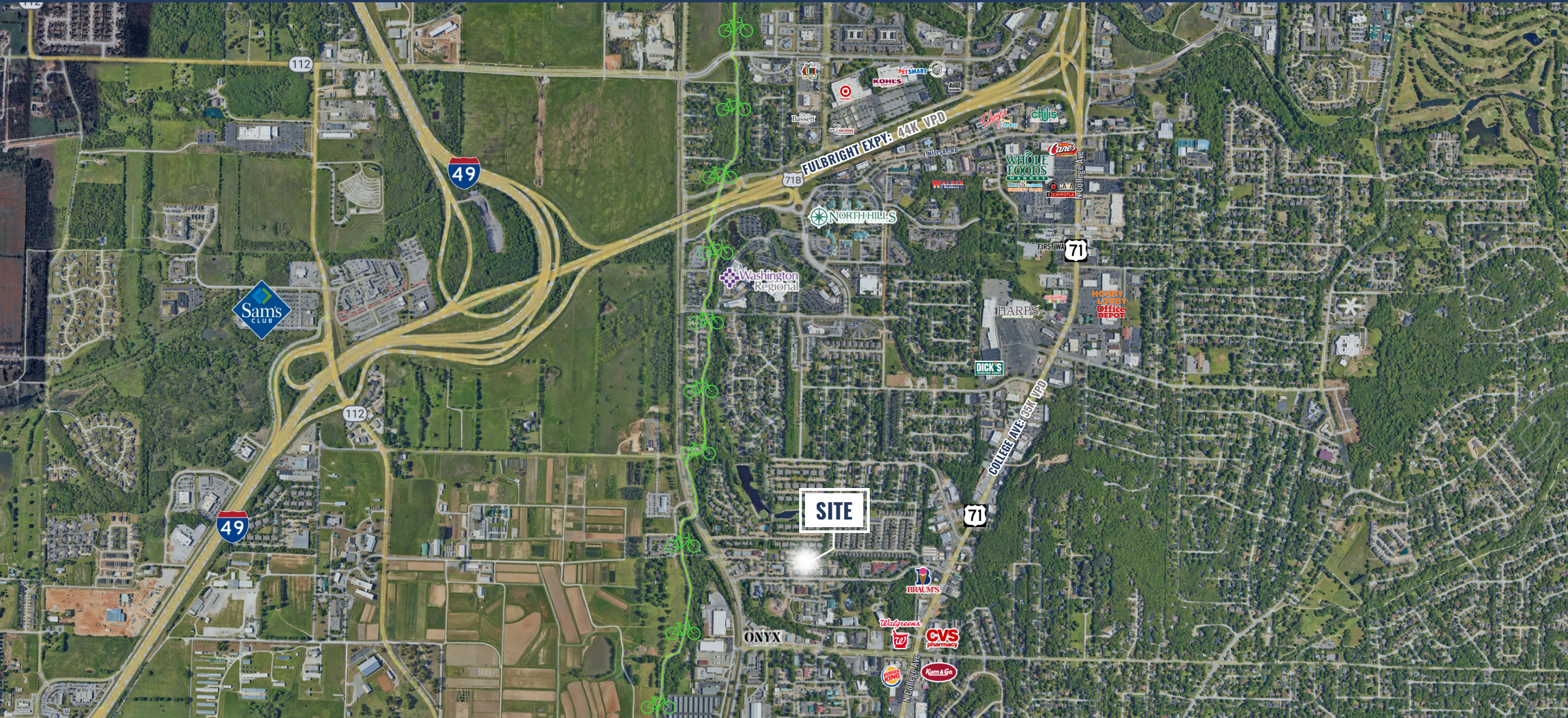
COREY FUHRMAN  
OFFICE SPECIALIST  
479.504.2034  
COREY@FOCUSCREGROUP.COM

OKSANA DEMARIS  
OFFICE SPECIALIST  
479.372.0033  
OKSANA@FOCUSCREGROUP.COM











60 W SUNBRIDGE DR, SUITE 1, FAYETTEVILLE, AR 72703

AERIAL VIEW



**COREY FUHRMAN**  
OFFICE SPECIALIST  
479.504.2034  
COREY@FOCUSCREGROUP.COM

**OKSANA DEMARIS**  
OFFICE SPECIALIST  
479.372.0033  
OKSANA@FOCUSCREGROUP.COM





# FOCUS

## COMMERCIAL REAL ESTATE

**COREY FUHRMAN**  
OFFICE SPECIALIST  
479.504.2034  
COREY@FOCUSCREGROUP.COM

**OKSANA DEMARIS**  
OFFICE SPECIALIST  
479.372.0033  
OKSANA@FOCUSCREGROUP.COM

**WE FOCUS ON REAL RESULTS FOR OUR CLIENTS**

5512 W WALSH LN, SUITE 201, ROGERS, AR 72758 | 479.254.7000 | FOCUSCREGROUP.COM