

FOR SALE

2646 Westbend Pkwy

New Orleans, LA 70114

Presented By:

Eli Gunesebakan, CCIM, SIOR

Commercial Sales & Leasing
O: 504.340.9339 | C: 504.401.4900
elig@latterblum.com

Maxwell Grosch

Commercial Sales & Leasing
O: 504.340.9339 | C: 504.813.1671
mgrosch@latterblum.com

James Barse, CCIM, SIOR

Commercial Sales & Leasing
O: 504.340.9339 | C: 504.439.9376
jbarse@latterblum.com

Sue Sencanbaz

Commercial Sales & Leasing
O: 504.340.9339 | C:
ssencanbaz@latterblum.com



VIDEO

PROPERTY HIGHLIGHTS

- ±7.78 acres of land
- Approx. 1,300' on Westbend Pkwy
- Suitable for commercial and residential use
- Zoned S-MU (Suburban Neighborhood Mixed-Use)
- Easy access to Highway 90 and Behrman Highway
- Located just 10 mins from Downtown New Orleans

PROPERTY DESCRIPTION

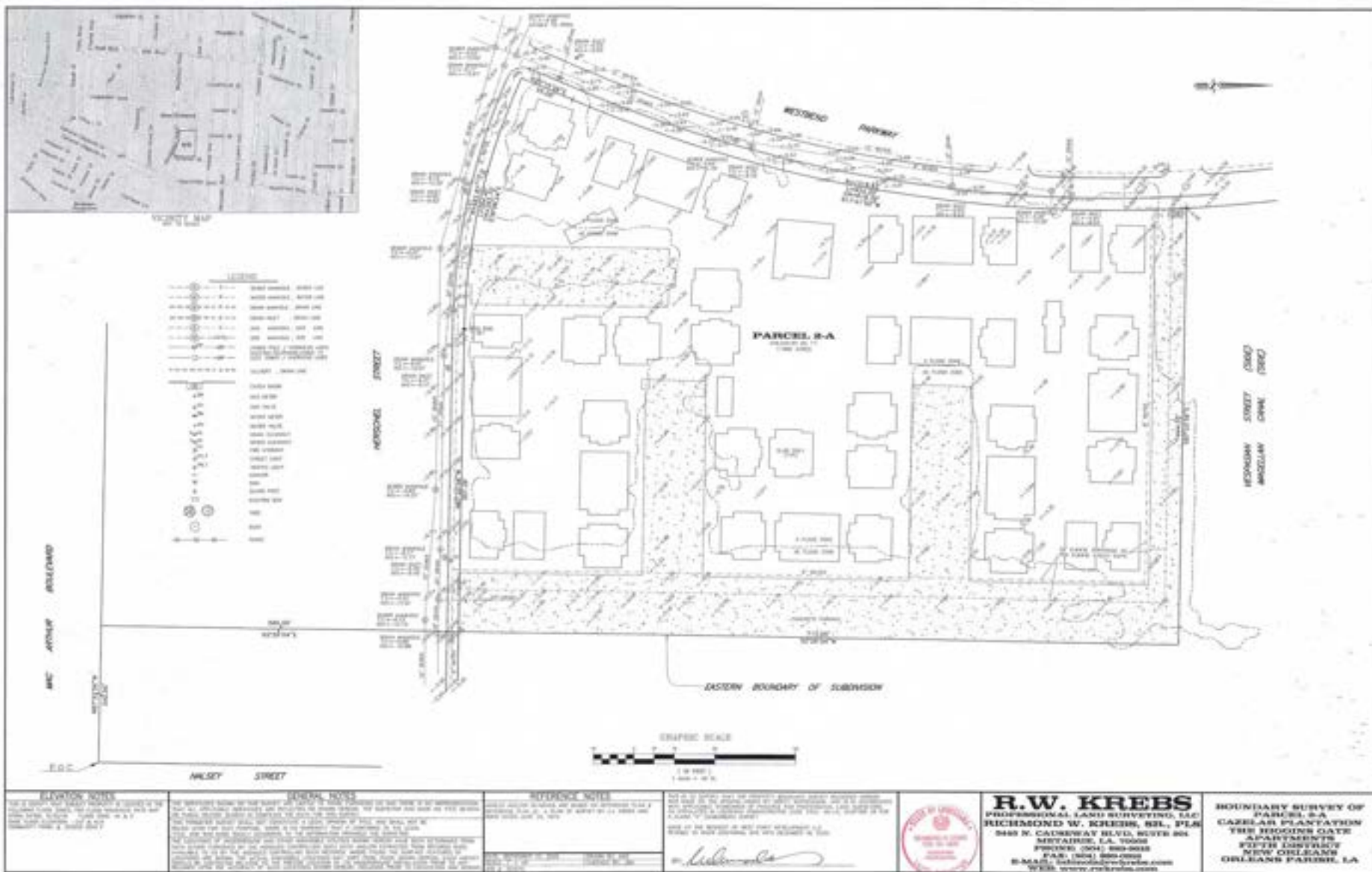
This property offers 7.78 acres of land with an S-MU zoning, making it a prime location for a variety of development opportunities. Positioned just off the high-traffic General De Gaulle Drive, it features easy access to popular local attractions such as the new Chick-fil-A, the renowned Di Martino's, as well as shopping centers such as Azalea Plaza, Algiers Plaza, and Oakwood Mall.

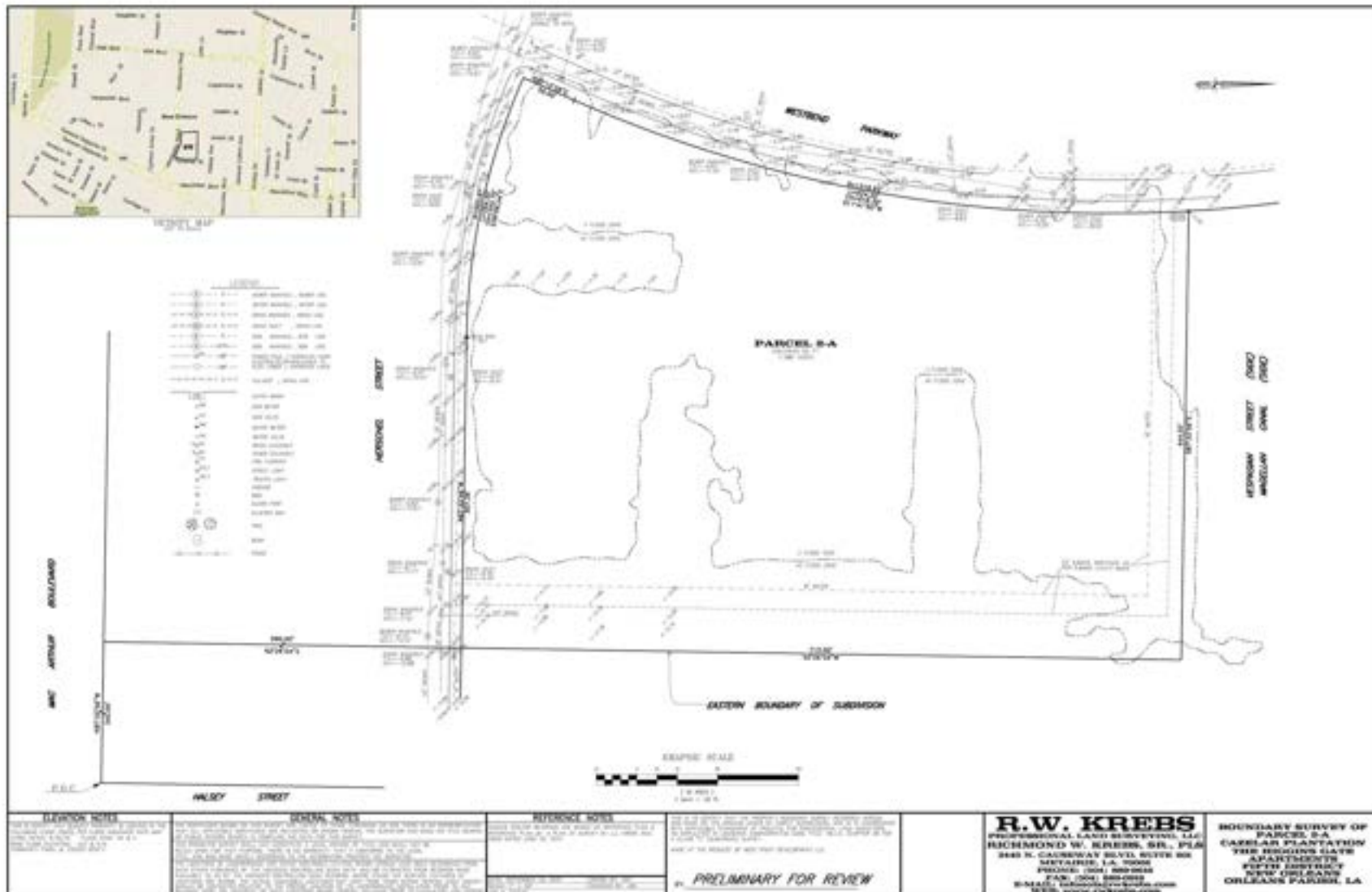
OFFERING SUMMARY

Sale Price:	\$1,100,000
Lot Size:	±7.78 Acres
Zoning	S-MU (Suburban Neighborhood Mixed-Use)

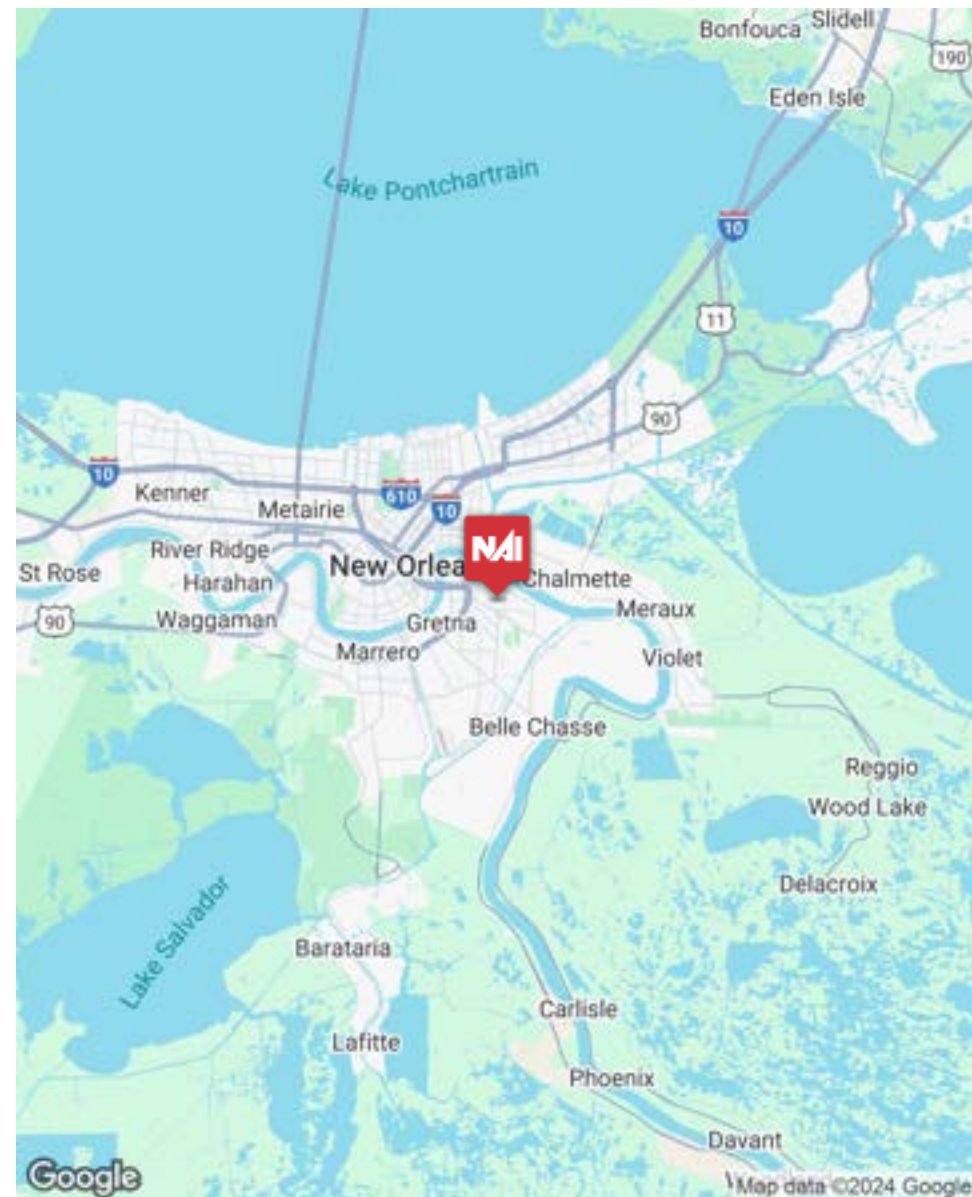














For More Information:

Eli Gunesebakan, CCIM, SIOR

Commercial Sales & Leasing
O: 504.340.9339 | C: 504.401.4900
elig@latterblum.com

Maxwell Grosch

Commercial Sales & Leasing
O: 504.340.9339 | C: 504.813.1671
mgrosch@latterblum.com

James Barse, CCIM, SIOR

Commercial Sales & Leasing
O: 504.340.9339 | C: 504.439.9376
jbarse@latterblum.com

Sue Sencanbaz

Commercial Sales & Leasing
O: 504.340.9339 | C:
ssencanbaz@latterblum.com

NALatter&Blum

430 Notre Dame Street
New Orleans, LA 70130

www.latterblum.com