



**TEMPLE**  
CONSTRUCTION | DEVELOPMENT | BROKERAGE

**2151 Shiloh Rose Pkwy SW  
Bondurant, IA 50035**

- **Building Size:  
22,500 Sq Ft**
- **Suite Sizes:  
3,705 - 18,720 Sq Ft**
- **Lease Rate:  
\$12 - \$12.50/PSF NNN**
- **Zoning:  
M-1 Light Industrial**
- **Wall Height:  
18' - 21'**
- **Dock Doors:  
1**
- **Drive-Ins:  
6**
- **Available In:  
December 2025**



**Dillon Temple**  
(515) 669-1238  
dillon@templeres.com

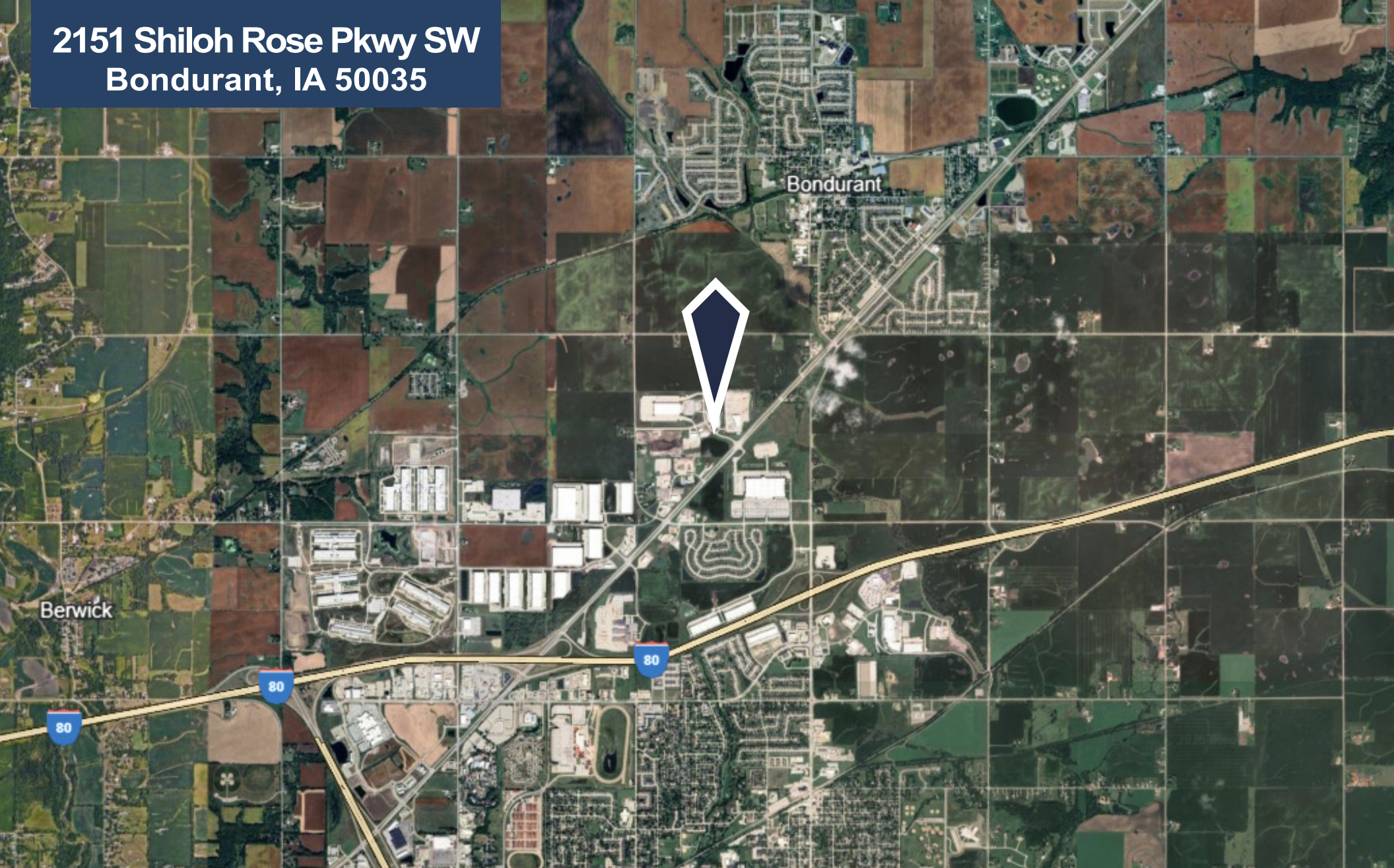
**Colton Pfeifer**  
(515) 518-0493  
colton@templeres.com

[info@templeres.com](mailto:info@templeres.com) | 1015 NW 10th St., Waukee, IA 50263 | [www.templeres.com](http://www.templeres.com)

The information contained herein, we believe, has been obtained from reasonably reliable sources, and we have no reason to doubt the accuracy of such information; however, no warranty or guarantee either expressed or implied, is made with respect to the accuracy thereof. All such information submitted is subject to error, omissions, or changes in conditions, prior to sale, lease, or withdrawal without notice. All information contained herein should be verified to the satisfaction of the persons relying thereon. Angle, LLC D/B/A Angle Realty is licensed to sell real estate in the State of Iowa.

Licensed to sell real estate in the State of Iowa

**2151 Shiloh Rose Pkwy SW**  
**Bondurant, IA 50035**



**Dillon Temple**

(515) 669-1238

dillon@templeres.com

**Colton Pfeifer**

(515) 518-0493

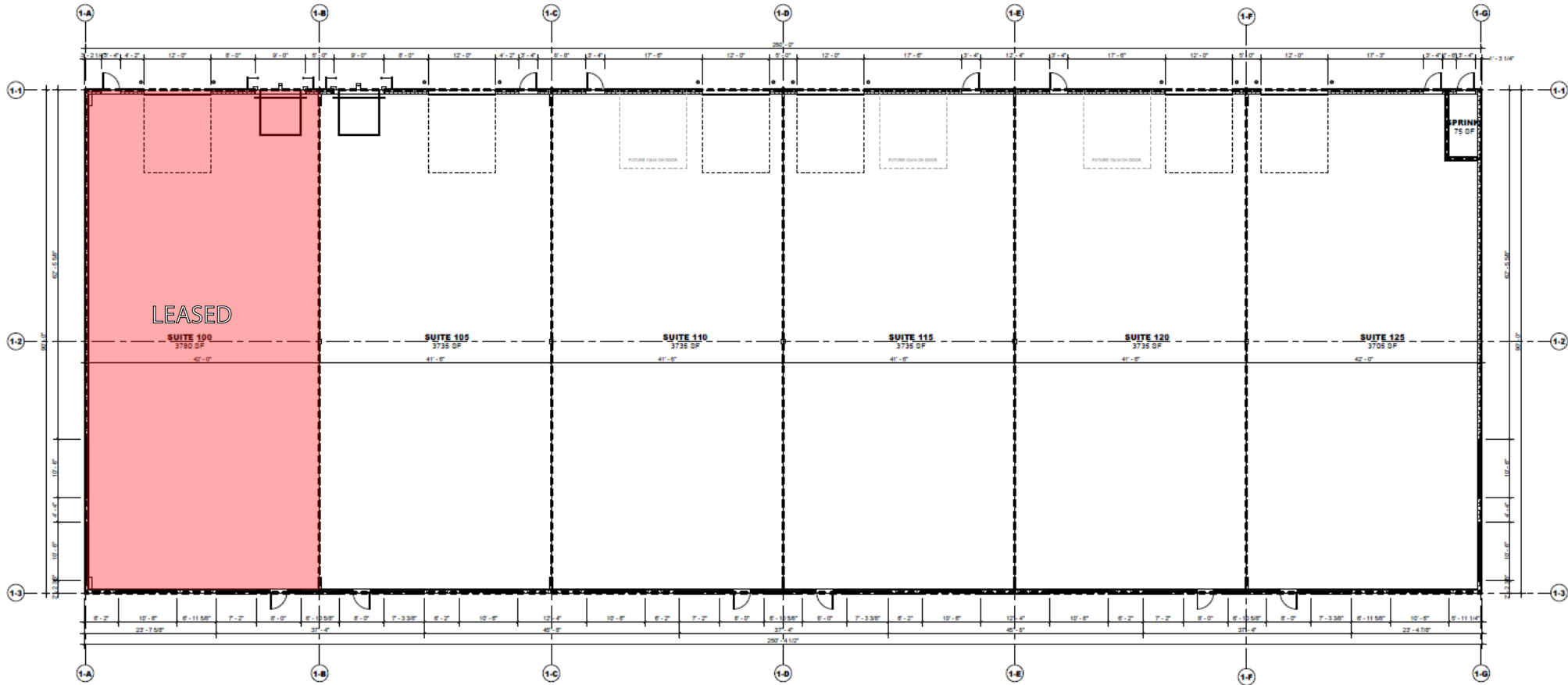
colton@templeres.com



info@templeres.com | 1015 NW 10th St., Waukee, IA 50263 | www.templeres.com

Licensed to sell real estate in the State of Iowa

# LEASE PLAN



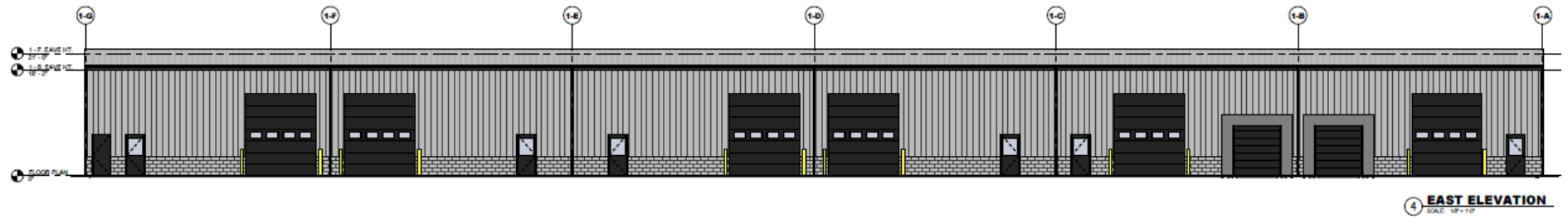
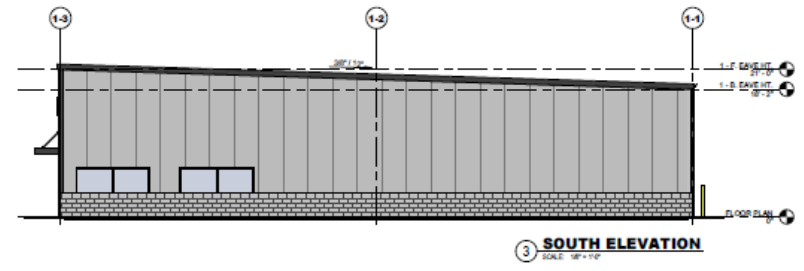
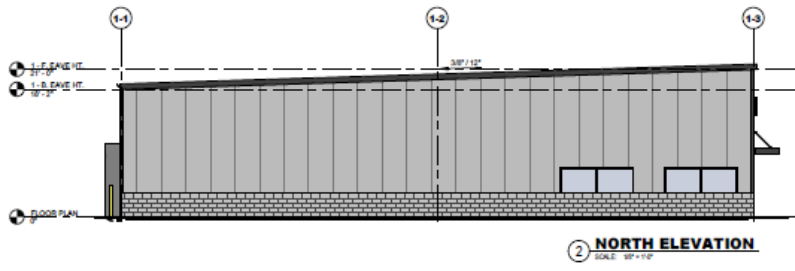
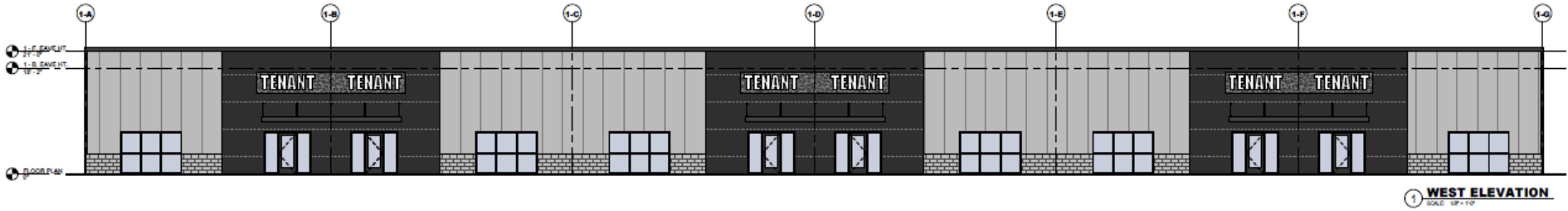
**Minimum Divisible: 3,705 Sq Ft**  
**Maximum Contiguous: 18,720 Sq Ft**

**Dillon Temple**  
 (515) 669-1238  
 dillon@templeres.com

**Colton Pfeifer**  
 (515) 518-0493  
 colton@templeres.com



# ELEVATIONS



**Dillon Temple**

(515) 669-1238

dillon@templeres.com

**Colton Pfeifer**

(515) 518-0493

colton@templeres.com



