



185 South Morris St
Dover NJ

FOR SALE - AUTO REPAIR PROPERTY

Corner property on county road.

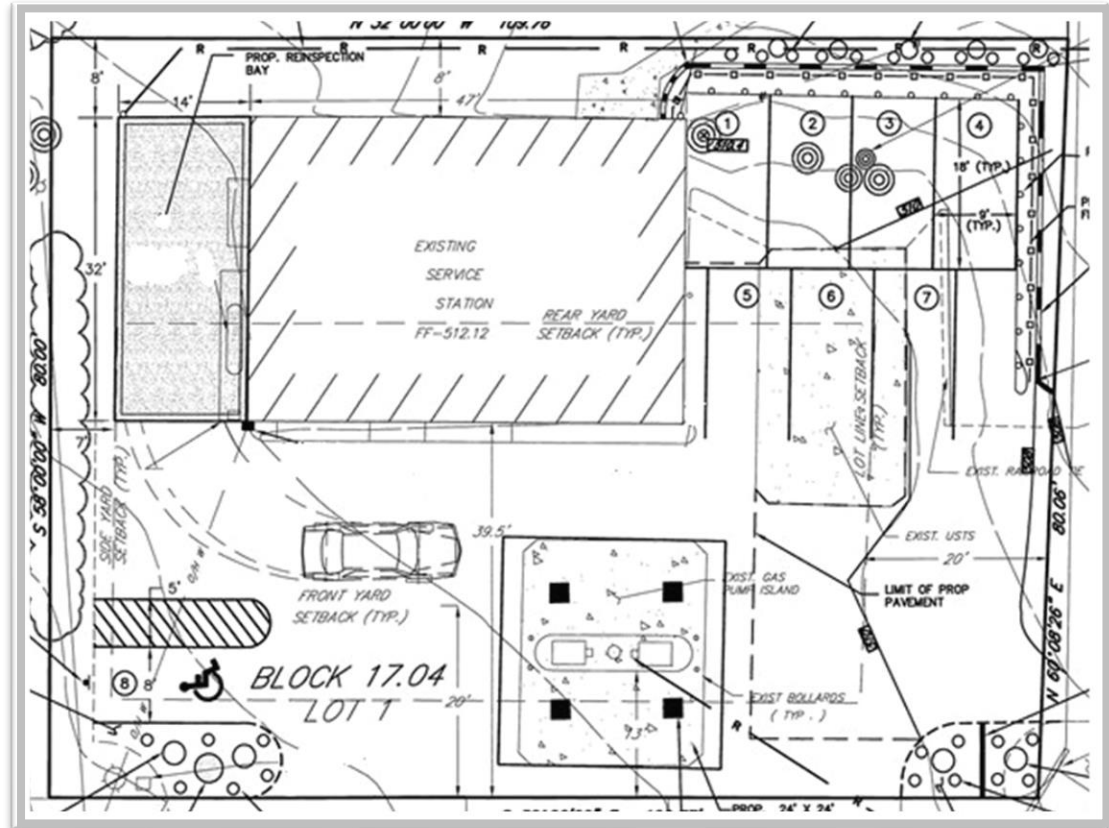
Automotive Use

Excellent Parking & Signage

Gregory Panayoti | 201.845.6606 | GPanayoti@NIANationalRealty.com

Total SF	1,952
Parking Spaces	10
Bays	3
Lot Size	.195 acres
Taxes	\$11,700
Zoning	R2

PRICE **\$599,999.00**



Former “76” Gas Station and current auto repair facility in good condition with 3 bays, room for outside storage and approx. 10 car parking. Fuel tanks, gas equipment and canopy has been removed. Environmental being completed.

Corner property visibility on busy double lined county road leading to Route 10. This is a pre-existing nonconforming auto use in an R2 (residential) zone. Don’t miss this rare affordable auto opportunity!

Gregory Panayoti | 201.845.6606 | GPanayoti@NIANationalRealty.com