

**FLOOR PLAN KEYNOTES** (SEE ALSO ACCESSIBILITY DETAILS ON A7.0)

1. EXIST. 1-HR. F.R. DEMISING WALL FULL HT. TO U/S ROOF ASSEMBY W/ FIRE-RATE CAULK ALL EDGES TO REMAIN. PATCH/REPAIR AS NEEDED. SEE DETAILS.
2. SUPPLY / INSTALL NEW MEDICAL VACUUM UNIT. DRAIN TO FLOOR SINK. SEE MED. GAS PLANS
3. COORD. INSTALLATION OF OWNER'S WASHER / STERILIZER EQUIP. W/ WATER CONN. DRAIN TO FLOOR SINK W/ GRATE - SEE PLUMBING.
4. ACCESSIBLE SINK W/ ELECTRIC-EYE FAUCET CONTROLS - SEE PLUMBING SCHEDULE, ELEV AND ACCESSIBILITY DETAILS ON A7.0.
5. WALL-MOUNTED STAINLESS SCRUB SINK UNIT SINK (3 COMP.) W/ ELECTRIC-EYE FAUCETS - PROVIDE BACKING / BRACING IN WALL.
6. INSTALL MEDICAL VACUUM & MEDICAL GAS OUTLETS AT MIN. 60" AFF - SEE PLUMBING/ELEVATIONS.
7. FLOOR-MOUNTED MOP SINK W/ MOP RACK ABOVE
8. COORDINATE INSTALLATION OF OWNER-SUPPLIED EQUIPMENT - FRIDGE, ICE-MAKER, BLANKET WARMER, ETC.
9. NEW ELECTRICAL PANELS - COORD. INSTALLATION OF OWNER-SUPPLIED UNINTERRUPTABLE POWER SYSTEM (UPS) EQUIPMENT - VERIFY W/ OWNER. - SEE ELEC.
10. COORD. INSTALLATION OF OWNER'S UPS BATTERY EQUIP.
11. FULLY TILED ACCESSIBLE SHOWER STALL (MIN. 60" X 30" CLR.) W/ HOSE-HEAD, HINGED SEAT, GRAB BARS & NON-SLIP TILE FLOOR FIN. - SEE DETAIL 12A7.0
12. LOW-LEVEL INLET HVAC RETURN AIR DUCT, IN METAL STUD SHAFT - VERIFY DIMENSIONS W/ MECHANICAL.
13. MEDICAL GAS CLOSET - 1-HR. F.R. ENCLOSURE PER **IBC 427** PROVIDED: 1-HR. FIRE RATED WALLS TO FULL HEIGHT AND EXHAUST FAN TO EXTERIOR. SEE **MECHANICAL SCHEDULE** FOR FAN SPEC. PROVIDED: SINGLE-HEAD SPRINKLER TO BE CONNECTED TO SYSTEM. MEDICAL GAS CLOSET TO CONTAIN A MAX. QUANTITY OF 4 OXYGEN H-TANKS @ 282 CU.FT. & 2 NITROUS OXIDE H-TANKS @ 567 CU.FT. EACH. PER CFC TABLE 5003.1. SEE MEDICAL GAS PLAN (**MG001**).  
 OXYGEN (4 H-TANKS @ 282 CU.FT. EACH): 1128 CU.FT.  
 NITROUS OXIDE (2 H-TANKS @ 567 CU.FT. EACH): 1134 CU.FT.  
 PROJECT TOTAL: 2262 CU.FT.  
 OXYGENING GAS (GASEOUS) MAX: 1500 CU.FT. 6000 CU.FT. (WITH EXCEPTIONS D, E. PER **IBC TABLE 307.1**)  
 OCCUPANCY RATING UNCHANGED. UNDER MAX. ALLOWED.
14. PROVIDE / INSTALL FIRE-TREATED CUBICLE CURTAINS AND TRACK: 12" ABOVE FFL TO FULL HT. CEILING.
15. AUTOMATIC DOOR OPENER ACTIVATION PUSH-PAD AT 60" AFF - COORD. W/ ELEC.
16. PROVIDE 2" WIDTH SHEET VINYL STRIP. INSET INTO FLOORING. COLOR: RED
17. SUPPLY AND INSTALL NURSE-CALL EQUIPMENT CONTROL CONSOLE. WARNING INDICATOR LIGHTS AND SWITCHES / PULL-CORDS AT ALL RECOVERY BAYS. PATIENT RESTROOM AND OP ROOMS.
18. 60" HT. PVC CORNER PROTECTION - TYP. ALL EXPOSED CORNERS - SEE SPECS.
19. PROVIDE 72" HT. X. CONT. FRP WAIRSCOT FINISH THESE WALLS.
20. EXIST. R-2) BATT INSULATION AND 5/8" GYP. BD. ON EXT. STUD FULL HT. ALL EXTERIOR WALLS - INCL. GYP. BD. SILLS & REVEALS AROUND ALL WINDOWS TO REMAIN. PATCH/REPAIR AS NEEDED.
21. PROVIDE SIGN W/ INTERNATIONAL SYMBOL OF ACCESSIBILITY SIGNAGE ADJACENT TO DOOR - SEE DOOR/WINDOW LEGEND

22. PROVIDE 1 LAYER QUIETROCK EZ GYP. BD. W/ ACOUSTIC GREEN GLUE TO INSIDE FACE OF ROOM - PROVIDE R-30 BLANKET INSUL. OVER TOP OF GYP. BD. CLG.
23. ALL EXISTING STRUCT. COLUMNS TO BE PROTECTED IN PLACE. PROVIDE MTL. FURRING & ½" TYPE X GYP. BD. TO ENCASE COLUMNS.
24. VERIFY LOCN. NEW WATER HEATER & WATER SOFTENER UNIT. DRAIN TO FLOOR SINK - SEE PLUMBING PLANS
25. NEW SEMI-RECESSED FIRE EXTINGUISHER CABINET - INCL. 10-LBS TYPE 2-A-10B-C DRY CHEMICAL FIRE EXTINGUISHER.
26. ACCESSIBLE RECEPTION COUNTER (36" LENGTH) AT 31" HT. AFF. W/ MAIN TRANSACTION COUNTER ADJACENT AT 42" HT. AFF.
27. NEW WORK SINK - SEE PLUMBING SCHEDULE. PROVIDE EYE-WASH ATTACHMENT AS NOTED.
28. FIRE ALARM PULL-STATION AT 48" AFF - COORD. WITH NEW CENTRAL FIRE ALARM PANEL - LOCATION TBD. (BY OTHERS)
29. FULL LENGTH PVC- CLAD WALL RAIL PROTECTION AT 30" HT ( BOTTOM EDGE); HALLWAY AND HEAD EACH BAY - SEE SPECS.
30. PROVIDE POWER AND WALL BACKING AND COORDINATE INSTALLATION OF OWNER'S WALL-MOUNTED TVS.
31. LINE OF WALL-MOUNTED CABINET W/ LED ILLUM. BELOW. TYP. COORDINATE INSTALLATION OF WALL CABINETS W/ BACKING IN WALL. INCL. POWER OUTLETS (AT MICROWAVE SHELF LOCATION, ETC.).
32. PROVIDE 4-TIER MELAMINE-FACED SHELVES AT 15" O.C. VERT. ON KNIFE-EDGE BRACKETS AND VERT. MTL. STANDARDS MAX 24" O.C.
33. PROVIDE NEW BLINDS AT ALL WINDOWS - SEE SPECS. - PROVIDE OPAQUE 3M FILM TO 8" HT. IN LOCN. SHOWN
34. NEW ALL GENDER ACCESSIBLE RESTROOM. SEE ELEVATIONS.
35. PROVIDE SIGNAGE FOR MEDICAL GAS STORAGE - FOLLOW ALL STATE AND LOCAL GUIDELINES.
36. VERIFY MEDICAL GAS CLOSET EXHAUST DUCT ROUTE EXHAUST DUCT TO UNDERSIDE OF 2ND FLOOR WALKWAY W/ BIRD SCREEN. MIN. 10'-0" AWAY FROM ANY FRESH AIR INTAKE AND MIN. 3'-0" AWAY FROM ANY BUILDING OPENINGS. PROVIDE SMOKE FIRE DAMPER AT ALL FIRE RATED WALL, FLOOR, AND CEILING PENETRATIONS. VERIFY EXACT ROUTING IN FIELD. - PROVIDE FIRE RATED SHAFT ENCLOSURE - SEE **MP-2.0** AND **1444.0**

**GENERAL NOTES** GENERAL CONSTRUCTION NOTES

1. DO NOT SCALE FROM PLANS. FIELD VERIFY ALL DIMENSIONS & REPORT ANY DISCREPANCIES TO ARCHITECT AT ONCE. REFER TO SHEET A-1.1 FOR ALL DIMENSIONS.
2. ALL DIMENSIONS ARE TO CENTERLINE OF STUD OF WALLS UNLESS NOTED OTHERWISE. END DIMENSIONS ARE TO FINISHED INTERIOR FACE OF EXISTING PERIMETER WALLS.
3. INSTALL DOUBLE STUDS AT JAMBS FOR ALL INTERIOR DOORS.
4. PROVIDE WATER RESISTANT GYPSUM BOARD AT WALLS W/ PLUMBING FIXTURES.
5. PROVIDE 5/8" GMMU (CEMENT BOARD) OVER 2-LAYER #15 FELT AT ALL WALLS SCHEDULED FOR TILED FINISH
6. REFER TO ENGINEER'S DRAWINGS FOR COORDINATION WITH MECHANICAL, ELECTRICAL AND PLUMBING SYSTEMS AS REQUIRED.
- 7A. PLACE ALL ELECTRICAL & PHONE OUTLETS (UNOBSTRUCTED) WITH A FORWARD HIGH REACH @ 48" MAX AND A LOW FORWARD REACH OF 15" MIN. WITH LOW REACH MEASURED TO THE BOTTOM OF THE OUTLET BOX AND THE HIGH REACH MEASURED TO THE TOP OF THE OUTLET BOX. UNLESS AT FIXED CABINETS OR AS SPECIFIED OTHERWISE. COORDINATE ELECTRICAL OUTLETS WITH CABINETS, INCLUDING THOSE ABOVE COUNTER TOPS. ALL OUTLETS SHALL COMPLY WITH REACH RANGE PER **IBC 119-308**.
- 7B. EMPLOYEE WORK STATIONS SHALL COMPLY WITH **119-303.9** ELECTRICAL OUTLETS TO COMPLY WITH REACH RANGE (**119-308**) IF APPLICABLE. WHERE EMPLOYEE WORK AREAS HAVE AUDIBLE ALARM COVERAGE, THE WIRING SYSTEM SHALL BE DESIGNED SO THAT VISIBLE ALARMS COMPLYING WITH **CHAP. 9, SEC. 907.5.2.3.1**.
8. OWNER TO SUPPLY AND INSTALL ALL TELEPHONE AND DATA JACKS AND WIRING.
9. PROVIDE/POST AN OCCUPANT LOAD SIGN IN ENTRY AS PER CBC 1004.3.

**GENERAL NOTES** INTERIOR FINISH NOTES

1. READ WITH FINISH SCHEDULE & SPECIFICATIONS. INTERIOR FINISHES SHALL COMPLY WITH CBC CHPTR. 8 AND TABLE 803.5.
2. PROVIDE CABINETS SHOP DRAWINGS TO BE REVIEWED BY ARCHITECT BEFORE STARTING WORK. ALL CABINETS WILL BE EUROPEAN BOX STYLE. BLUM HINGES, FULL EXTENSION GUIDES, PLASTIC LAMINATE. ALL INTERIORS TO BE KORTKON LINED. INSTALL DOORS, 6" SQ. PULLS (BRUSHED ALUM.) AND LATCHES AS REQUIRED.
3. VERIFY MATERIALS AND COLORS FOR ALL CABINET FINISHES. INSTALL SOLID SURFACING AND PLASTIC LAMINATE COUNTERTOP MATERIALS AS NOTED ON COLOR / FINISH SCHEDULE. PROVIDE SAMPLES FOR REVIEW PRIOR TO FABRICATION.
4. PAINT ALL GYPSUM BOARD WALLS AND CEILINGS. PROVIDE EGG-SHELL SHEEN PAINT FINISH FOR ALL OFFICE AREAS / SEMI-GLOSS FOR ALL PATIENT AREAS. PROVIDE WASHABLE EPOXY PAINT IN OPERATING ROOMS.
5. INSTALL CARPET (AND BASE) IN AREAS / ROOMS AS NOTED ON PLAN. INSTALL GLUE-DOWN CARPET PER FINISH SCHEDULE. CARPET AND INSTALLATION SHALL COMPLY W/ CBC SECTION 118.
6. INSTALL RESTROOM TILE FLOORING WITH INTEGRAL COVED BASE. AS NOTED ON FINISH SCHEDULE.
7. INSTALL NEW VINYL FLOORING WITH 5" INTEGRAL BASE, AS NOTED ON FINISH SCHEDULE
8. PROVIDE SQUARE CORNER BEAD AT ALL VERT. GYP. BD. AND HORIZONTAL GYP. BD. CORNERS. PROVIDE 48" PVC CORNER PROTECTION AT LOCATIONS - COORD. WITH CORNER PROTECTION AS NOTED.
9. PROVIDE TRANSITION STRIPS BETWEEN FLOORING OF DIFFERENT TYPES.
10. PROVIDE NEW BLINDS AT ALL EXTERIOR WINDOWS - SEE SPECS

**DOOR/WINDOW LEGEND**

- ⊙ DOOR NUMBER - READ W/ DOOR SCHED. (A-4.0)
- ◇ ACCESSIBILITY SIGNAGE

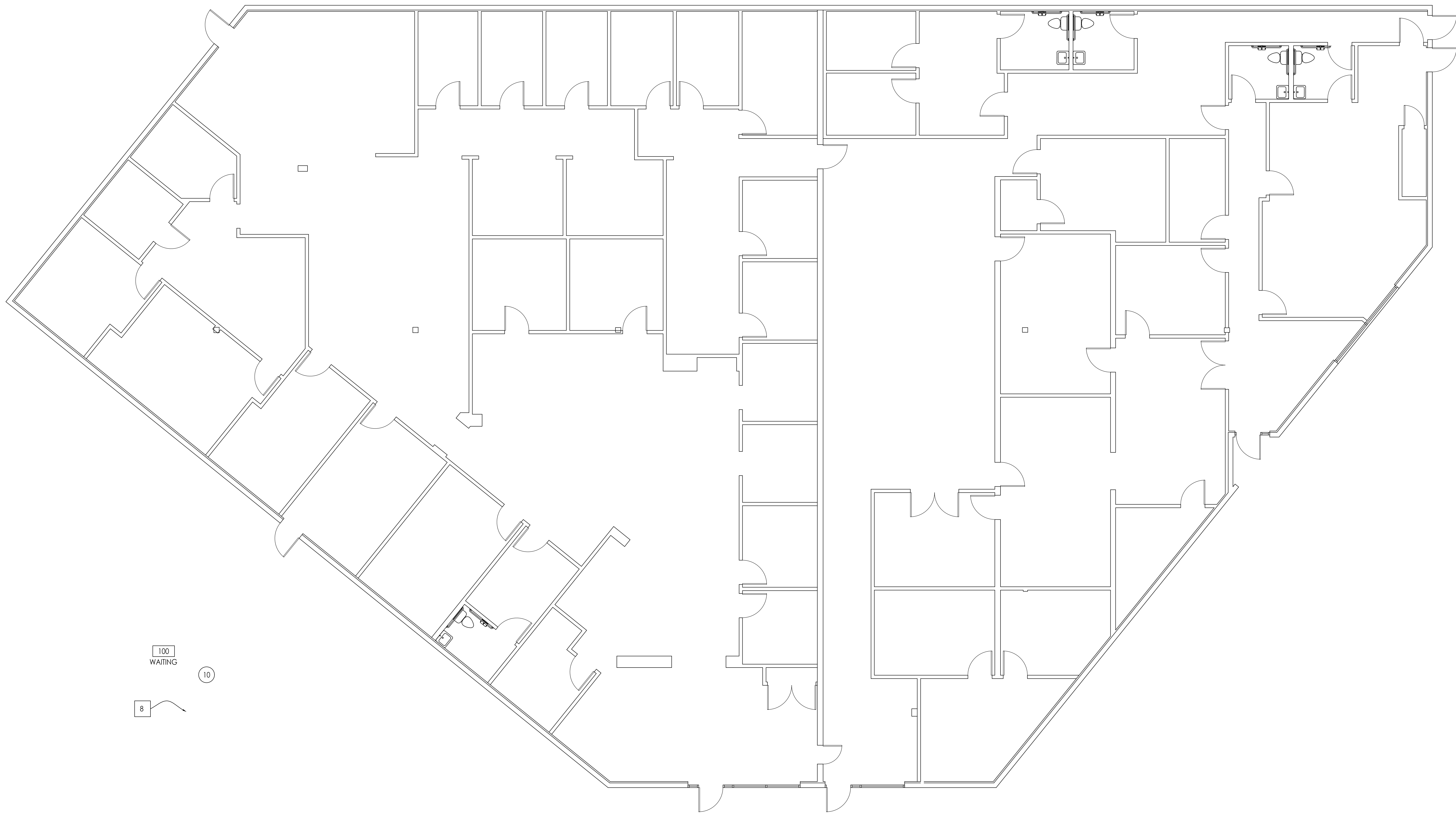
SIGNAGE - READ W/ SIGN SCHEDULE ON A4.0 & DETAIL 9A7.0.

- ⬆ EXIT
- ⬆ ACCESSIBLE RESTROOM - ALL GENDER

ALL EXIT / ENTRANCE: PROVIDE SIGN W/ INTERNATIONAL SYMBOL OF ACCESSIBILITY SIGNAGE ADJACENT TO DOOR

**WALL LEGEND**

- ▬ EXIST. 1 HOUR RATED DEMISING WALL: ½" TYPE X GYP. BD. EA. SIDE 3 ½"x20 GA. METAL STUDS @ 16" O.C. W/ SOUND INSULATION BATS FULL HT. (US OF EXIST. ROOF) U: **U445** PATCH/REPAIR AS NEEDED
- ▬ NEW INT. WALL TO MIN. 4" ABOVE SUSP. CLG: ½" TYPE X GYP. BD. EA. SIDE 3 ½"x20 GA. METAL STUDS @ 16" O.C. W/ SOUND INSULATION BATS FULL HT. BRACE TOP OF WALL TO STRUCTURE W/ DIAG. STUDS AT MIN. 48" O.C.
- ▬ NEW 1 HOUR RATED WALL: ½" TYPE X GYP. BD. EA. SIDE 3 ½"x20 GA. METAL STUDS @ 16" O.C. W/ SOUND INSULATION BATS FULL HT. (US OF EXIST. ROOF) U: **U465**
- ▬ NEW LOW WALL AT BASE CABINETS - ½" TYPE X GYP. BD. EA. SIDE 3 ½"x20 GA. METAL STUDS @ 16" O.C. - MAX 5'-9" HEIGHT FOR LOW WALL



FLOOR PLAN

PERMIT NO.

SHEET NO.

**A-1.0**

FLOOR PLAN  
3/16" = 1'-0"

