

For Lease

Professional Cir. & Double R Blvd.



LOGIC
CRE



10471 Double R Blvd.
Reno, NV 89521

Casey Prostinak

Vice President
775.813.2866
cprostinak@logicCRE.com
S.0177148.LLC

Landon Gonzalez

Vice President
775.741.6397
lgonzalez@logicCRE.com
S.0179599.LLC

Kami Kaba

Associate
805.459.1236
kkaba@logicCRE.com
S.0197606

Listing Snapshot



\$2.10 PSF MG

Base Lease Rate
+ \$700 per mo. CAM



± 981 SF

Available Square Footage

Property Highlights

- Three (3) private offices
- Reception area
- Common restrooms
- Located in the desirable South Reno submarket
- Furniture can be made available

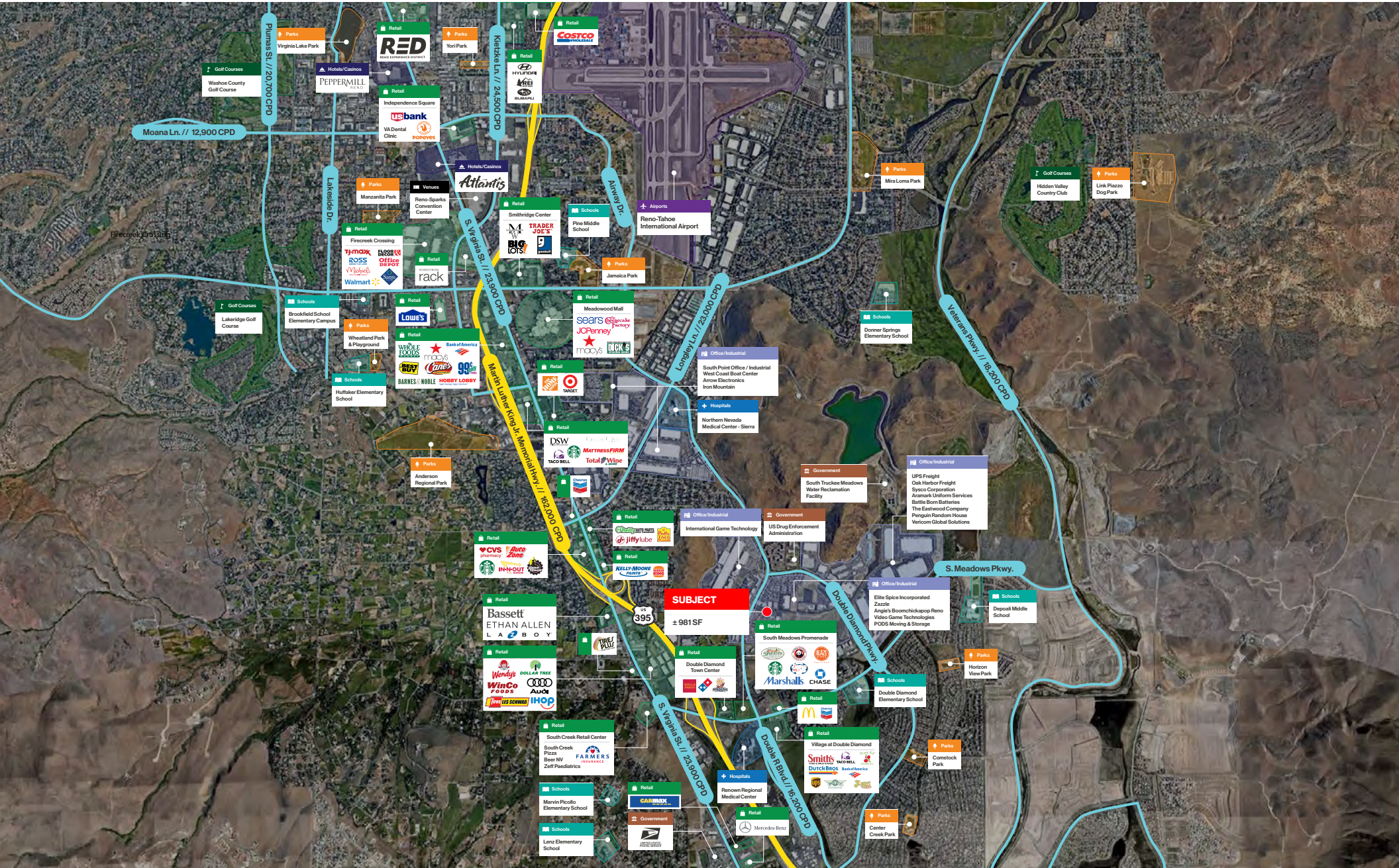
Demographics

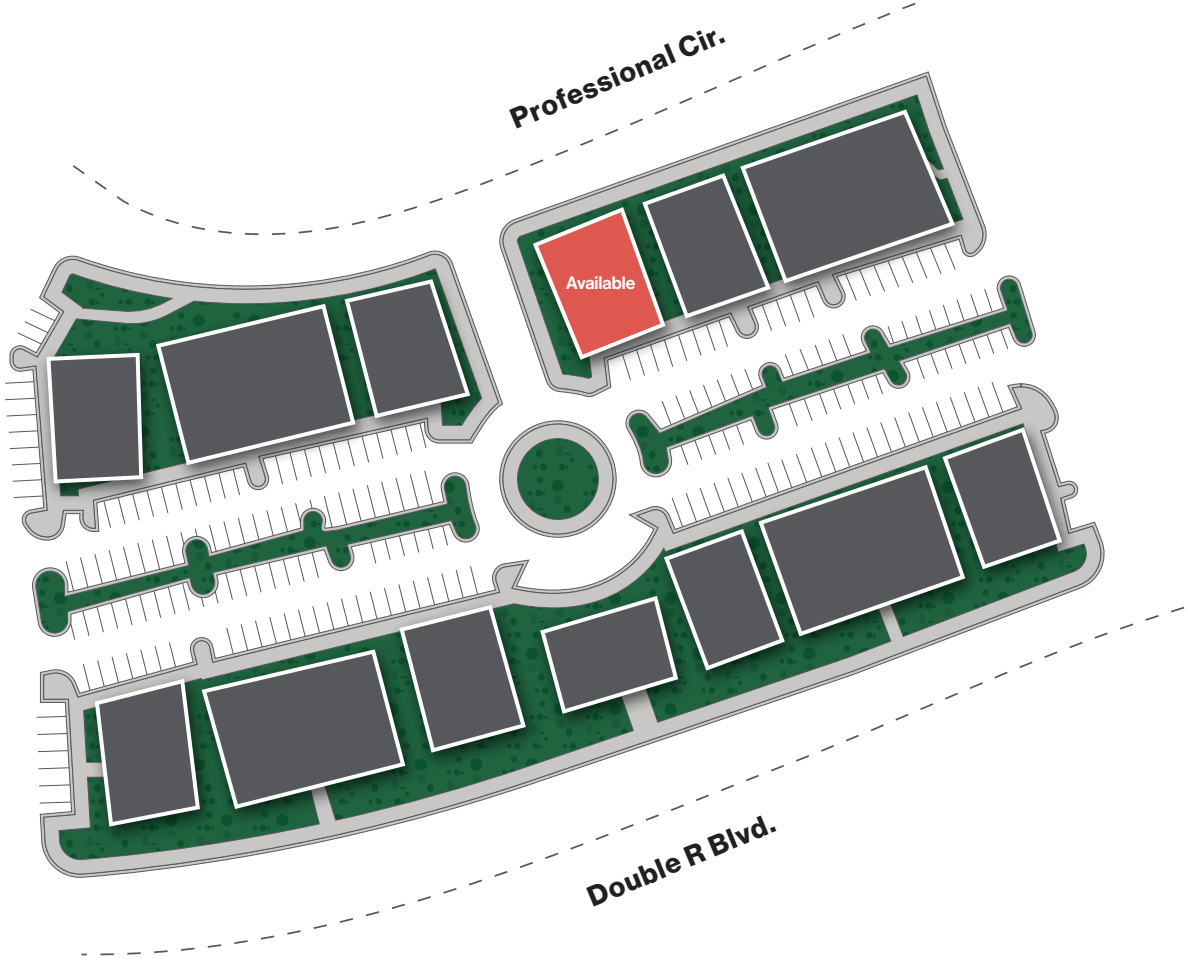
	1-mile	3-mile	5-mile
2024 Population	9,473	64,145	128,555
2024 Average Household Income	\$102,665	\$125,761	\$122,724
2024 Total Households	4,361	26,659	53,549



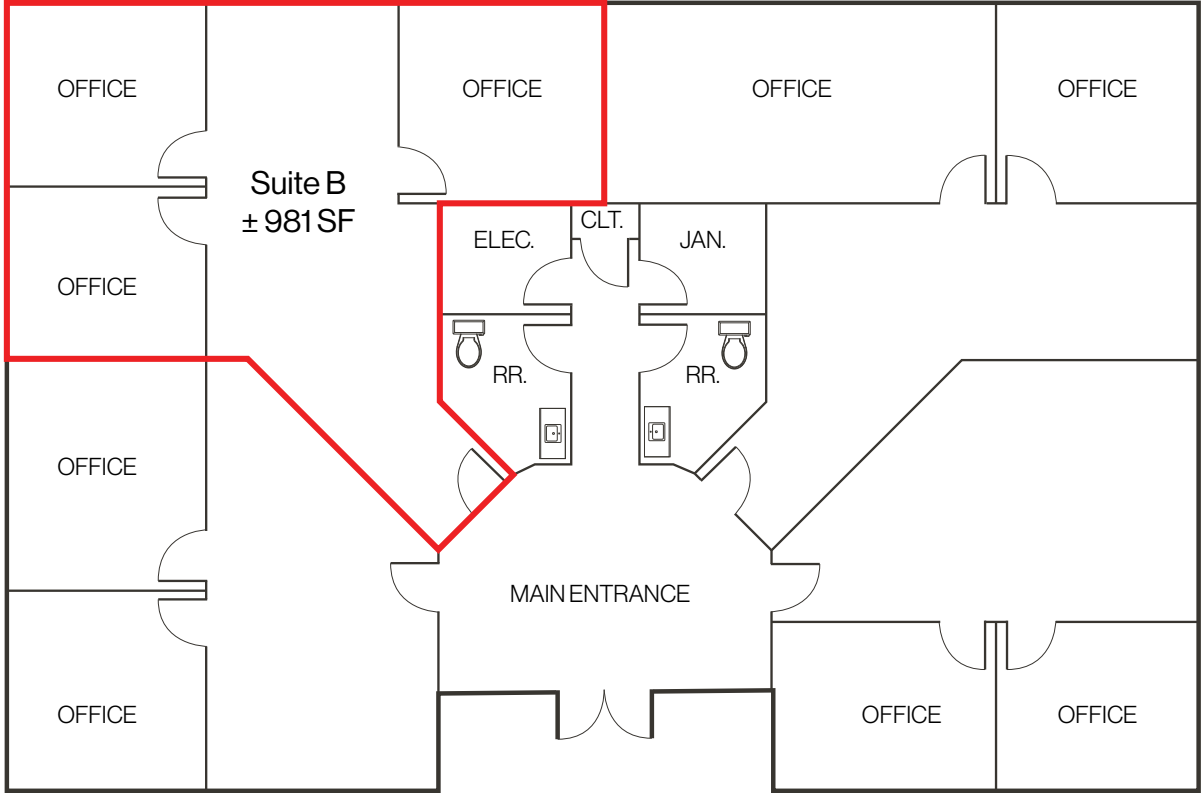
Aerial

- Venues
- Hospitals
- Government
- Office/Industrial
- Parks
- Schools
- Golf Courses
- Retail
- Hotels / Casinos
- Airports





Floor Plan



[Click for a Virtual Tour](#) 

Property Photos



LOGIC Commercial Real Estate

Specializing in Brokerage and Receivership Services



Join our email list and
connect with us on LinkedIn

The information herein was obtained from sources deemed reliable; however LOGIC Commercial Real Estate makes no guarantees, warranties or representation as to the completeness or accuracy thereof.

For inquiries please reach out to our team.

Casey Prostinak

Vice President
775.813.2866
cprostinak@logicCRE.com
S.0177148.LLC

Landon Gonzalez

Vice President
775.741.6397
lgonzalez@logicCRE.com
S.0179599.LLC

Kami Kaba

Associate
805.459.1236
kkaba@logicCRE.com
S.0197606