

111 LITTLETON RD

111  
LITTLETON

PARSIPPANY, NJ



Only 1  
Unit left!

OWNED AND MANAGED BY



## Building Information

- Building size: 36,389 SF three floors
- Available: 2,885 SF with possible expansion
- Office Suites: Build-to-suit
- Parking: 155 spaces (4.25:1000 SF)
- Occupancy: Immediate

## Property Features

- 2 story atrium
- Signage/branding opportunity
- Immediate access to I-80, I-287 & Rt 46
- Short drive to shopping, restaurants & hotels
- Back-up generator capacity available

*Exceptional Access - Exceptional Visibility*

*Image Conscious - Built for Small Business*

*All Suites Built To Tenant's Needs*

<https://111littleton.com>

For more information or personal inspection:

**W. Joshua Levering, SIOR**

973 463 1011 x137 | [jlevering@naihanson.com](mailto:jlevering@naihanson.com)

**William Ericksen**

973 463 1011 x112 | [wericksen@naihanson.com](mailto:wericksen@naihanson.com)

**NAI James E. Hanson**

COMMERCIAL REAL ESTATE SERVICES, WORLDWIDE

10 Lanidex Plaza West, Parsippany, NJ 07054

195 North St, Suite 100, Teterboro, NJ 07608

FOLLOW US!     | [naihanson.com](http://naihanson.com)

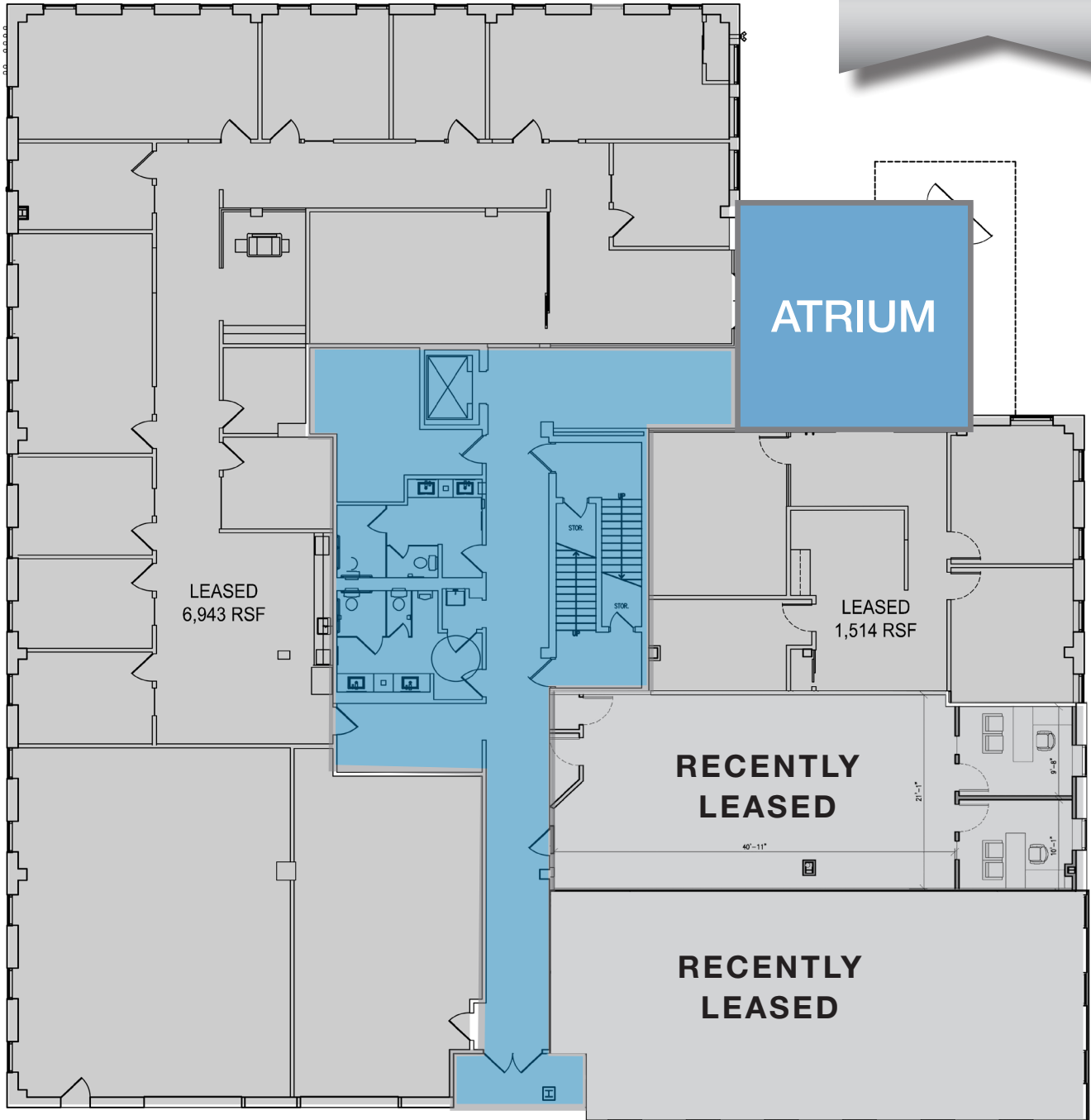
Member of NAI Global with 400 Offices Worldwide

1ST FLOOR PLAN

SUITE 111

111 Littleton Rd  
Parsippany, NJ

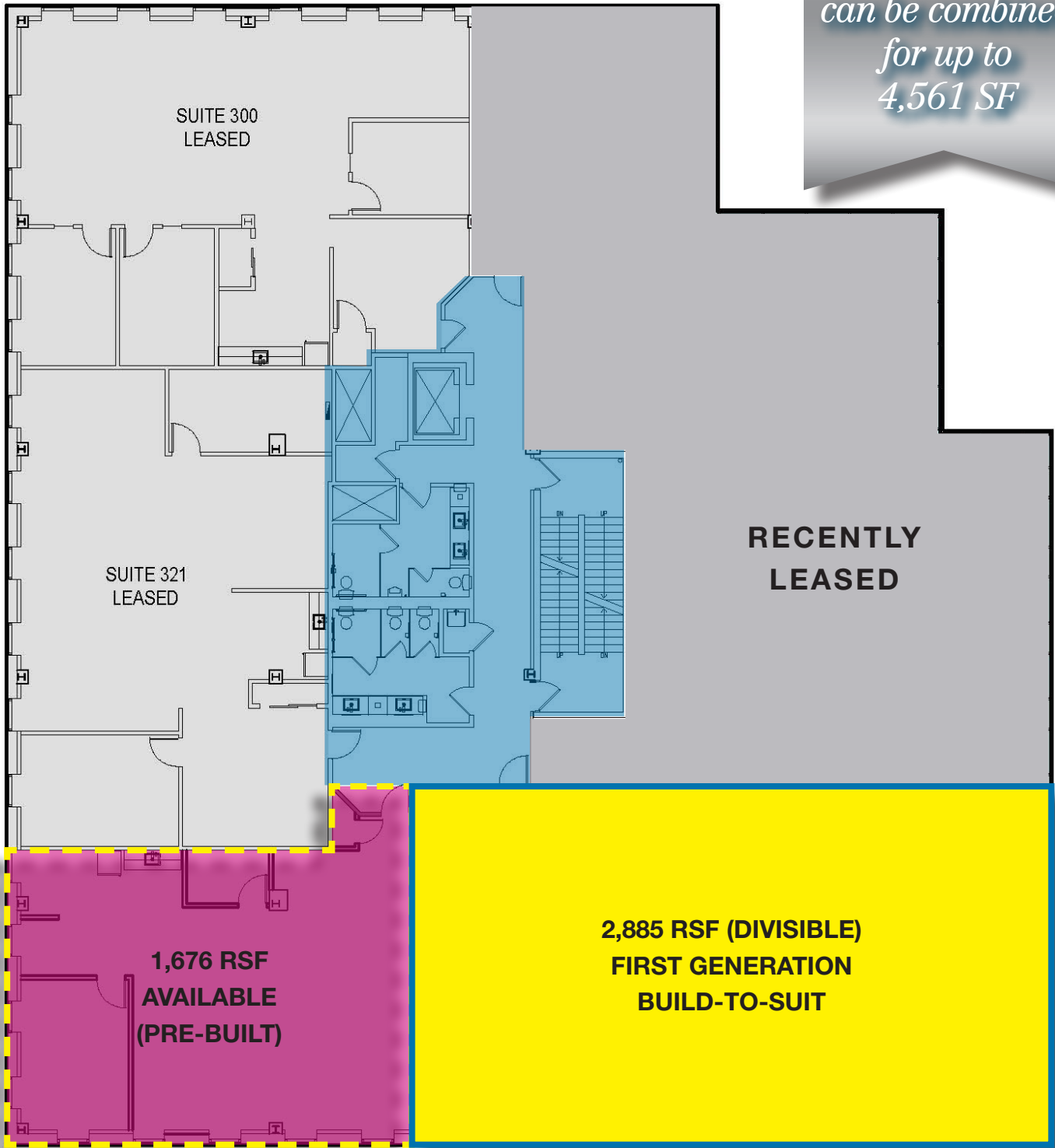
*First Floor  
now fully  
leased*



3RD FLOOR PLAN  
SUITE 320 & 330

111 Littleton Rd  
Parsippany, NJ

*2,885 SF is  
Build-to-Suit &  
can be combined  
for up to  
4,561 SF*



CAN BE  
COMBINED  
FOR 4,561 RSF

111 Littleton Road is a 36,389 SF office building designed for the image conscious small business.

It is strategically located at the northwest quadrant of the intersection of I-287 and I-80.

Visit [www.111littleton.com](http://www.111littleton.com) to learn more!

## Location

- 0.1 miles to I-287
- 0.1 miles to US-46
- 0.2 miles to I-80
- 0.1 miles to US-202

