

PEARL DISTRICT/6TH ST MULTI-USE COMMERCIAL FOR LEASE



2235 E 6TH ST, TULSA, OK 74104

SIZES

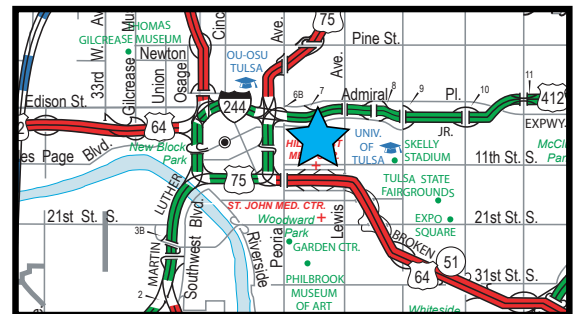
- 6,064 SF (CH Records)
 - 3,000 SF ± Front Office Building
 - 1,920 SF ± Warehouse/Storage
 - 1,144 SF ± 2 Story Loft/Garage Property
- (See Floor Plan)

FEATURES

- Versatile Multi-Use complex for offices, warehouse and storage
- Remodeled offices and partially finished loft
- Warehouse/Storage building includes:
 - 3 - 12'x12' OH Doors
 - 16' Clear Height
 - Fenced/Gating access
- 9,000 SF +/- Parking/Storage Lot
- Zoned CS (Commercial Shopping)
- All utilities to site
- Zone X - Not in city regulatory or FEMA floodzones
- Nearby Mother Road Market, NOMA Mixed use apartments and retail
- Located in Pearl/Wittier Square Districts near University of Tulsa (TU)
- Close proximity to I-244/BA Expressway (US 51)



Loft/Garage and Warehouse



The information contained herein is believed to be accurate but is not guaranteed as to accuracy and may change or be updated without notice.

Contact: Monty Berry, CCIM, Broker Associate

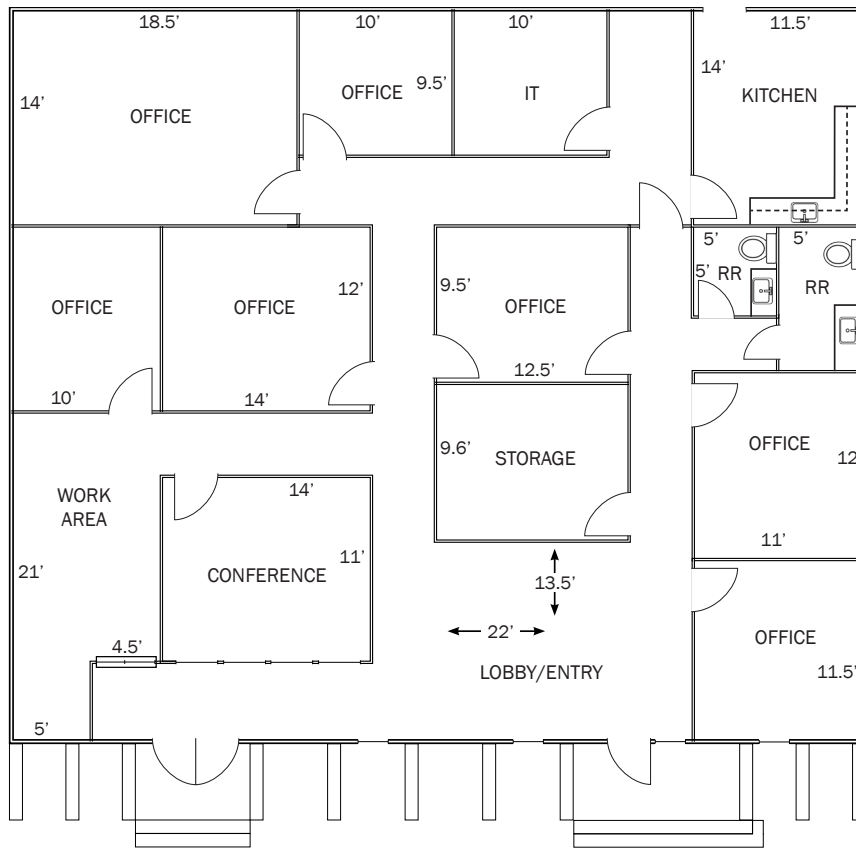
Office (918) 280-9900 | **Cell** (918) 695-4162 | **Fax** (918) 280-9902

E-mail Monty@EquitasRealty.com





Front Office Floorplan



Aerial



Aerial



Photos



Entry/Lobby



Conference



Office



Break/Kitchen

Photos

