

6,600 +/- SF GARAGE AVAILABLE FOR LEASE

2515 MOORE STREET South Philly, Philadelphia 19145



- » 6,600 +/- SF garage for lease just off the corner of 25th on Moore Street
- » Zoning I-CMX
- » Located on the edge of Grays Ferry & Point Breeze. Easy access to I-76, I-95, SEPTA bus stops, and the Snyder stop of SEPTA Broad Street line.



DEMOGRAPHICS (within 1 mile)

Residents within 1 mile	64,430
Average household income	\$78,207
Est. daytime population	9,018

NEIGHBORS INCLUDE:

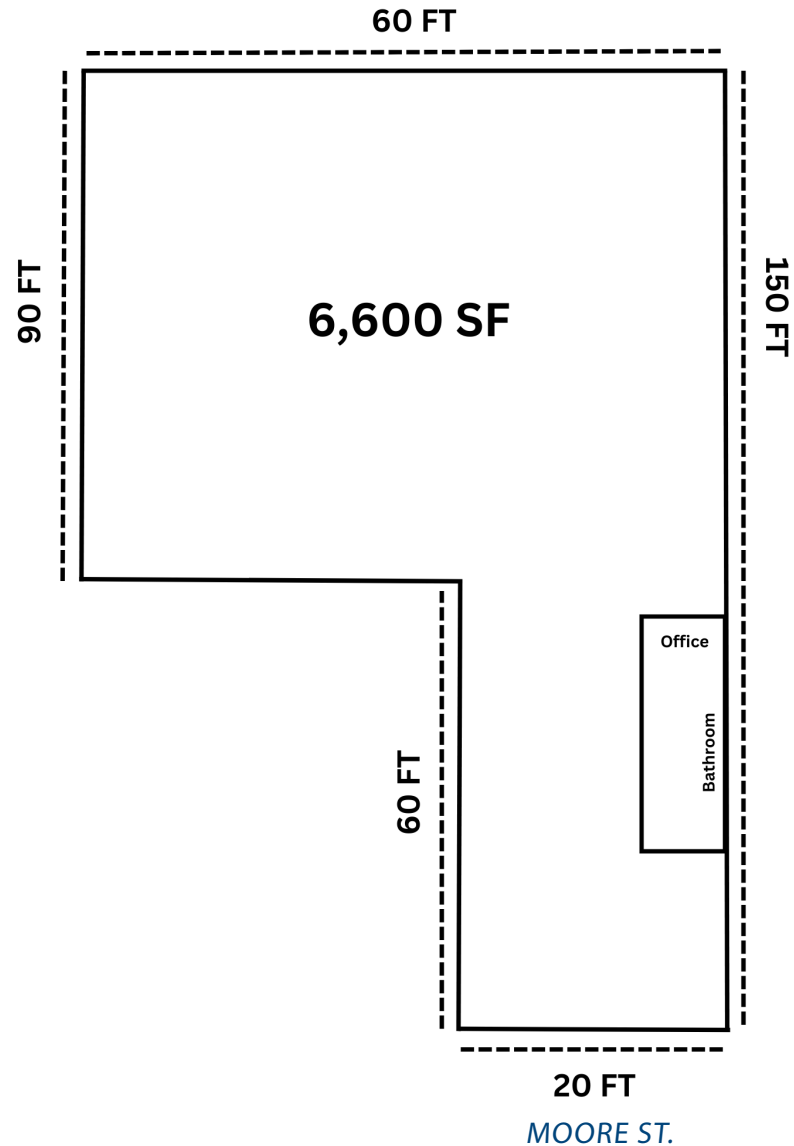


VERONICA BLUM 267.238.1728 ■ vblum@mpnrealty.com

2515 MOORE STREET

South Philly, Philadelphia 19145

Floor Plan

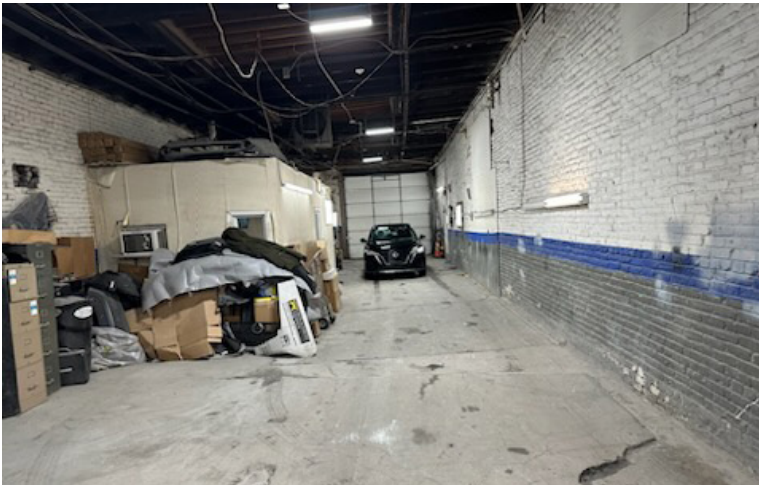


VERONICA BLUM 267.238.1728 ■ vblum@mpnrealty.com

2515 MOORE STREET

South Philly, Philadelphia 19145

Property Photos



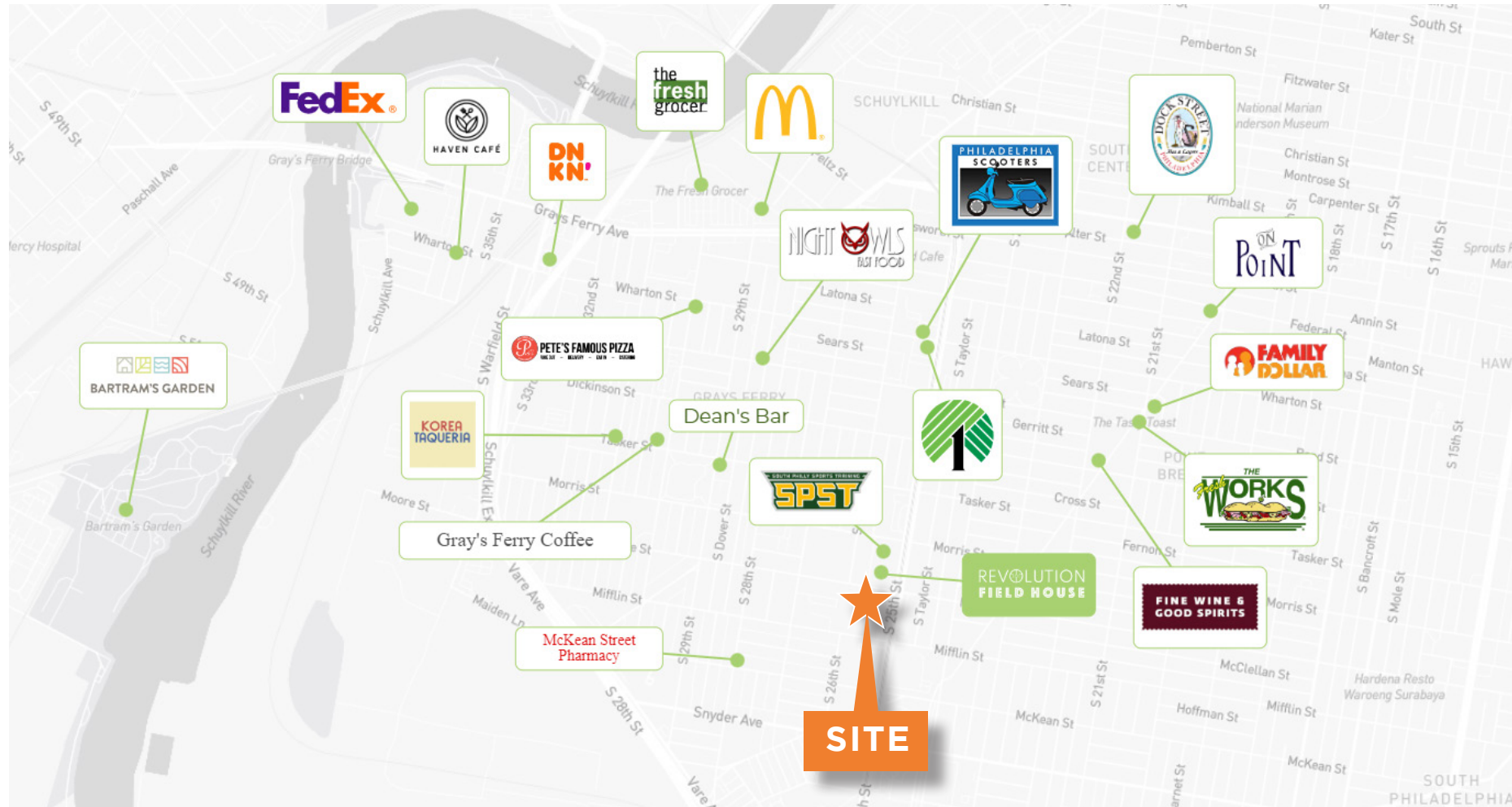
VERONICA BLUM 267.238.1728 ■ vblum@mpnrealty.com

Information concerning this offer is from sources deemed reliable and no warranty is made as to the accuracy thereof. The offering is submitted subject to errors, omissions, change in price, or other conditions, prior sale or Lease, or withdrawal without notice. The prospective tenant should carefully verify to his/her own satisfaction all information contained herein.

2515 MOORE STREET

South Philly, Philadelphia 19145

Retail Map



VERONICA BLUM 267.238.1728 ■ vblum@mpnrealty.com