

Michael Commons
Office Condominiums
**FOR SALE OR
LEASE**

**223-C Bulifants Boulevard
Williamsburg, VA 23188**



2,249 Square Feet

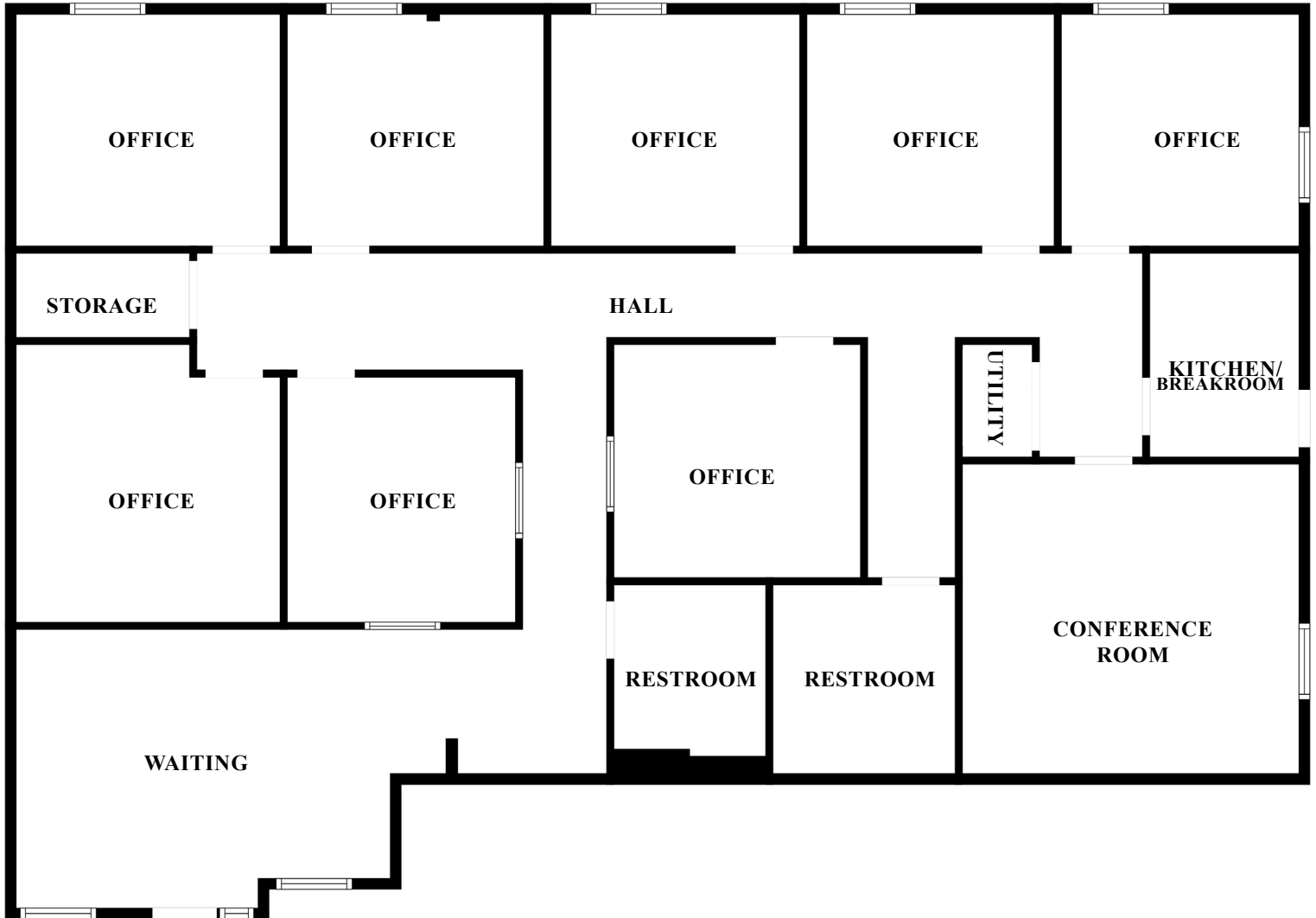
ABOUT PROPERTY

- 2,249 SF with 8 private offices, conference room and breakroom
- Attractive, brick construction
- Prominent office park located on Mooretown Road
- Convenient to Sentara Williamsburg Community Hospital, Route 199 & I-64
- Convenient to many nearby food establishments for a quick lunch
- LEASE RATE: \$15.00 per square foot, net of utilities and janitorial
- SALES PRICE: \$340,000.00
- AVAILABLE: September 2026

For more information:
MATT LEFFLER, CCIM
757.640.9284
MattLeffler@HarveyLindsay.com

825 Diligence Drive • Suite 114
Newport News, Virginia 23606
757-873-2020
www.HarveyLindsay.com

HARVEY LINDSAY
COMMERCIAL REAL ESTATE



2,249 SQ FT

223 Bulifants Blvd, Suite C
Williamsburg, VA 23188

DEMOGRAPHICS



2025 Summary	3 Mile	7 Miles	10 Miles
Population	176	2,150	12,133
Households	54	747	5,346
Average Household Size	3.24	2.87	2.26
Owner Occupied Housing Units	66	838	5,872
Renter Occupied Housing Units	18.5%	38.3%	41.9%
Median Age	39.1	43.6	46.2
Median Household Income	\$ 70,705	\$ 62,704	\$ 78,944
Average Household Income	\$ 104,978	\$ 93,340	\$ 103,038

KEY FACTS WITHIN 7 MILES



20,510
POPULATION

43.6
MEDIAN AGE



2.87
AVG. HOUSEHOLD SIZE

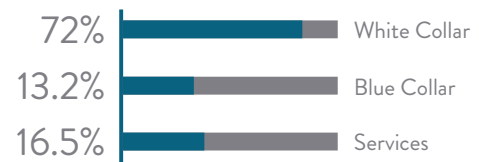
\$93,340
Average Household Income



204
TOTAL BUSINESSES



2,945
TOTAL EMPLOYEES



For more information:
MATT LEFFLER, CCIM
757.640.9284
MattLeffler@HarveyLindsay.com

825 Diligence Drive • Suite 114
Newport News, Virginia 23606
757-873-2020
www.HarveyLindsay.com

HARVEY LINDSAY
COMMERCIAL REAL ESTATE