

FOR LEASE

4132 WILL ROGERS PKWY, SUITE 100, OKLAHOMA CITY, OK 73108



HORIZON
COMMERCIAL REAL ESTATE

David Portman, CCIM
Principal

405.850.1107
Horizoncreek.com



PROPERTY INFORMATION

\$6.50/psf + NNN

PROPERTY TYPE	INDUSTRIAL
AVAILABLE SF	27,902 SF (Suite 100 & 200)
SPACE SF	15,350 SF (Suite 100)
CLEAR HEIGHT	19' 9"
ZONING	I-2
YEAR BUILT	1984



INDUSTRIAL SUITES AVAILABLE FOR LEASE!



SUITE 100 INCLUDES 2,455 SF OF CLIMATE CONTROLLED OFFICE & SHOWROOM SPACE



FEATURES 4 DOCK DOORS (8'X10') & 2 DRIVE-IN RAMPS (NORTH: 8'X10' / SOUTH 12'X13')



HIGH CEILINGS WITH AMPLE PARKING ON SITE



SUITES CAN BE OCCUPIED INDIVIDUALLY OR COMBINED FOR VARIED OPERATIONAL NEEDS



VERSATILE SPACE IDEAL FOR MANUFACTURING, DISTRIBUTION, OR STORAGE NEEDS



CONVENIENT ACCESS TO INTERSTATES I-40 & I-44

ALTHOUGH THE INFORMATION HAS BEEN OBTAINED FROM TRUSTWORTHY SOURCES, HORIZON CRE MAKES NO GUARANTEES, ASSURANCES, OR WARRANTIES ABOUT THE COMPLETENESS OR ACCURACY OF THE DATA. THIS PROPERTY IS BEING PRESENTED WITH THE POSSIBILITY OF ERRORS AND OMISSIONS. MODIFICATIONS MAY OCCUR THAT ALTER THE FACTS OF THIS PRESENTATION WITHOUT NOTICE.

HORIZON
COMMERCIAL REAL ESTATE

David Portman, CCIM
Principal

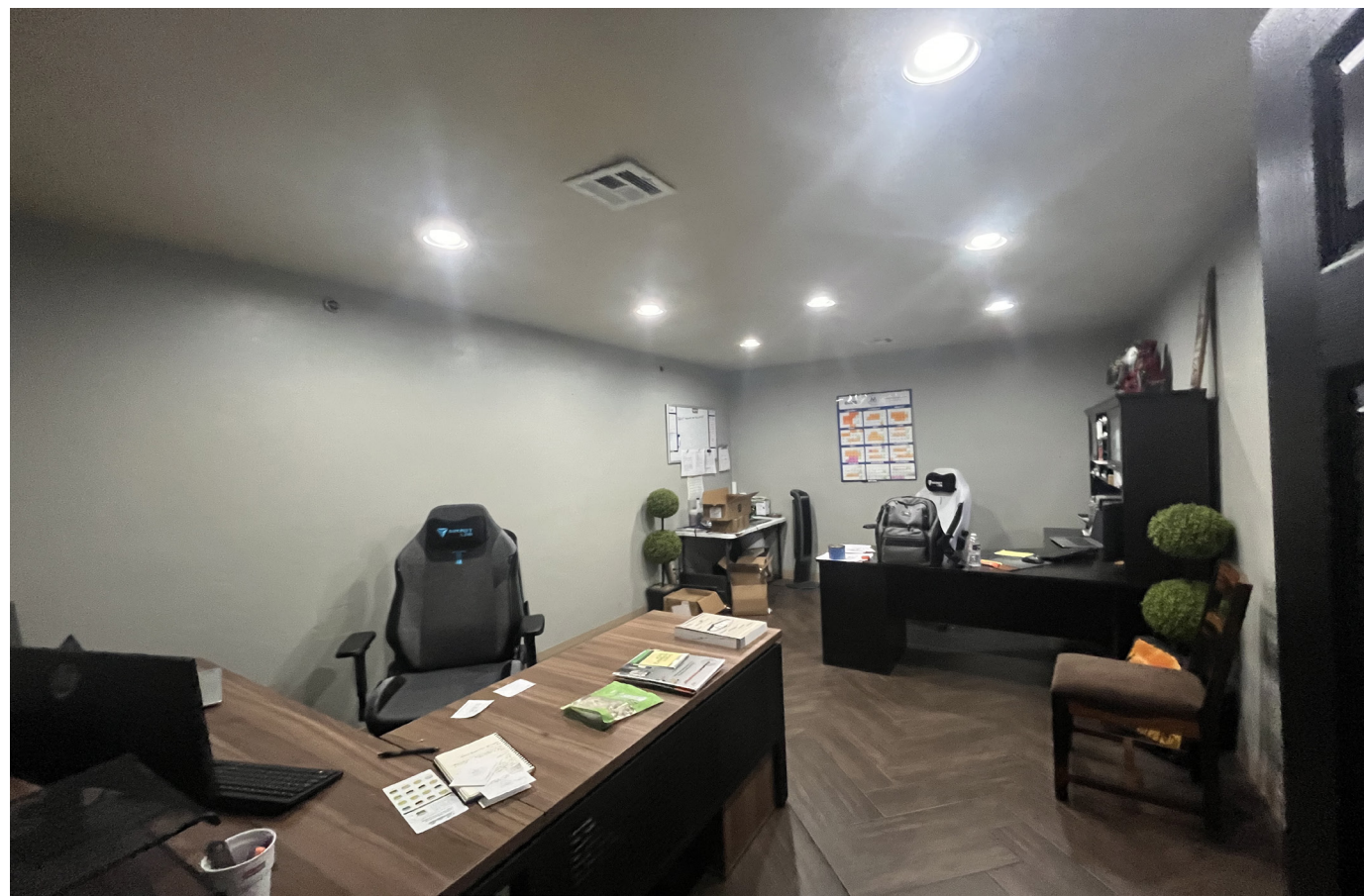
405.850.1107
Horizoncreek.com



HORIZON
COMMERCIAL REAL ESTATE

David Portman, CCIM
Principal

405.850.1107
Horizoncreek.com

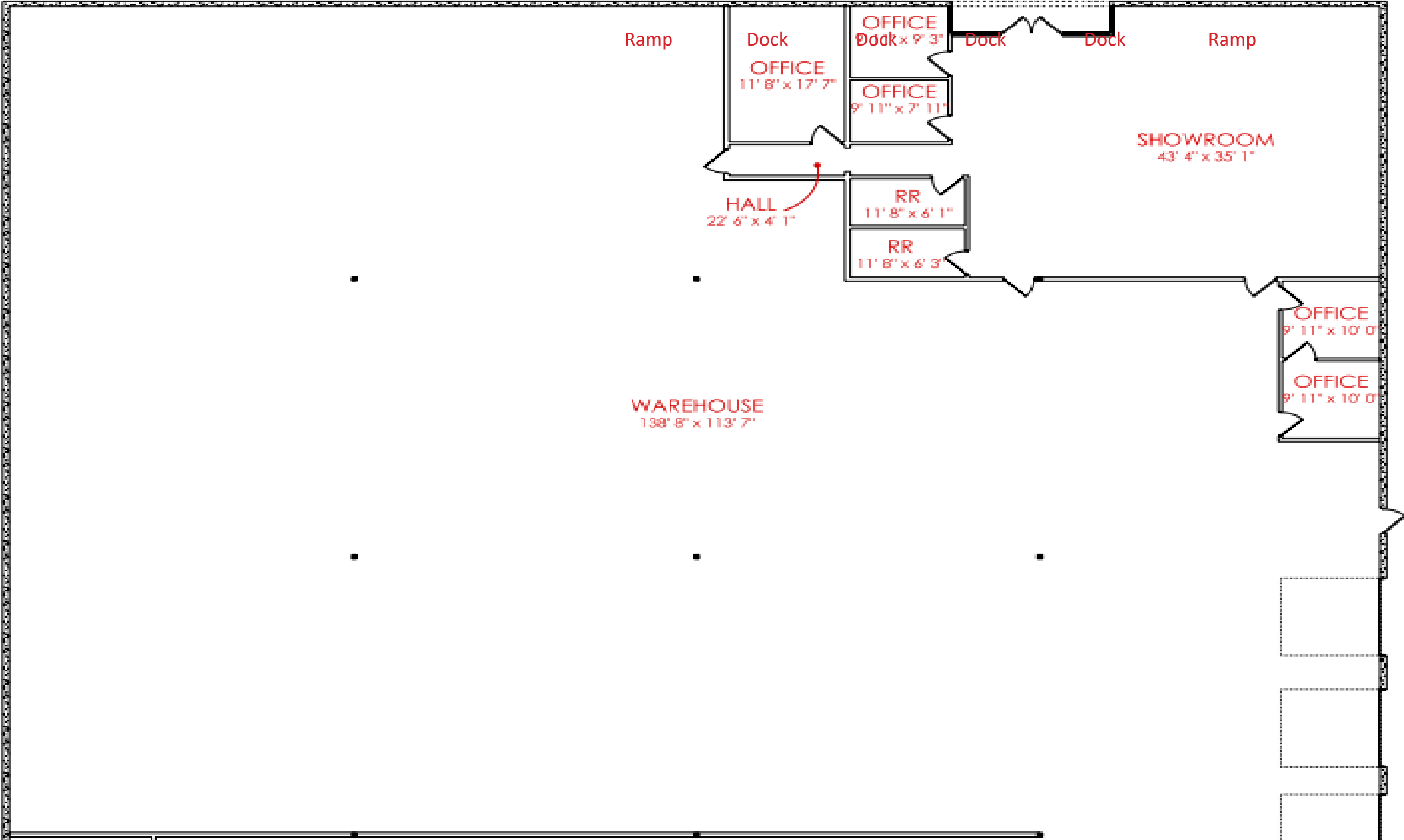


HORIZON
COMMERCIAL REAL ESTATE

David Portman, CCIM
Principal

405.850.1107
Horizoncreek.com

4132 Will Rogers Pkwy, Oklahoma City, OK 73108
SUITE 100



SUITE 100 PLAN
SCALE: 1/8" = 1'-0"

Metro Spec 7

4132 Will Rogers Pkwy, OKC, OK 73108

Project No:	104.0000
Date:	10/14/2009
Drawn By:	CJM
Checked By:	CJM

OFFICE	2465 sq ft
WAREHOUSE	12884 sq ft
TOTAL RSF	15350 sq ft

SUITE 100

A0.2

4132 Will Rogers Pkwy, Oklahoma City, OK 73108
SUITE 100 & 200

