

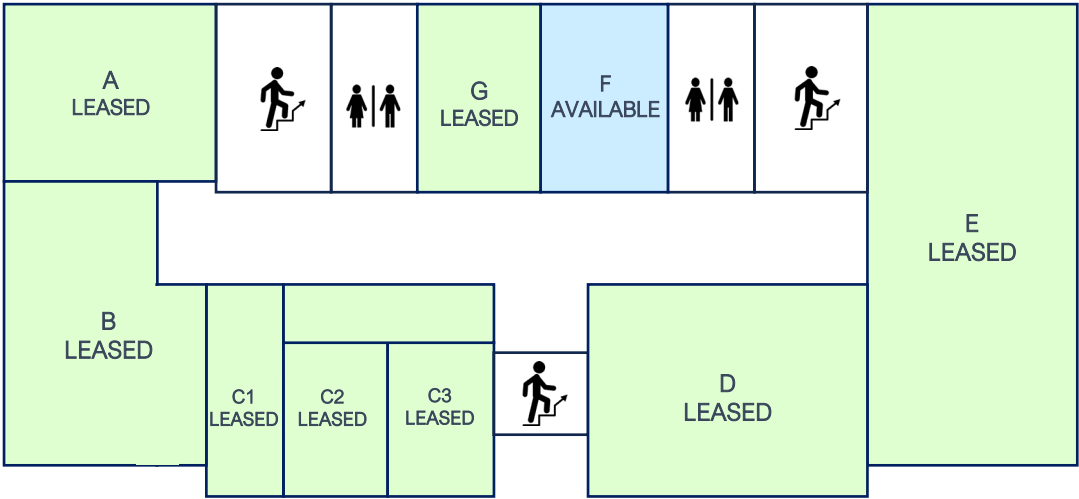
Building 6 Proposal

- UNITS RANGING FROM 135 UP TO 430 SQUARE FEET
- SMALLER UNITS AVAILABLE AT \$500 / MONTH GROSS RENT
- TERM: TBD
- AVAILABLE FOR MOVE IN: TODAY
- AMENITIES & CONSIDERATIONS:
 - I. Landlord will assist in setting up tenant on Google maps for marketing purposes. Tenant will have their own mailing address and mailbox. Landlord can send pictures of post card received in mail for Google maps verification.
 - II. Signage on exterior of unit and directory available upon request.
 - III. All new Floors, new LED lights, and new paint.

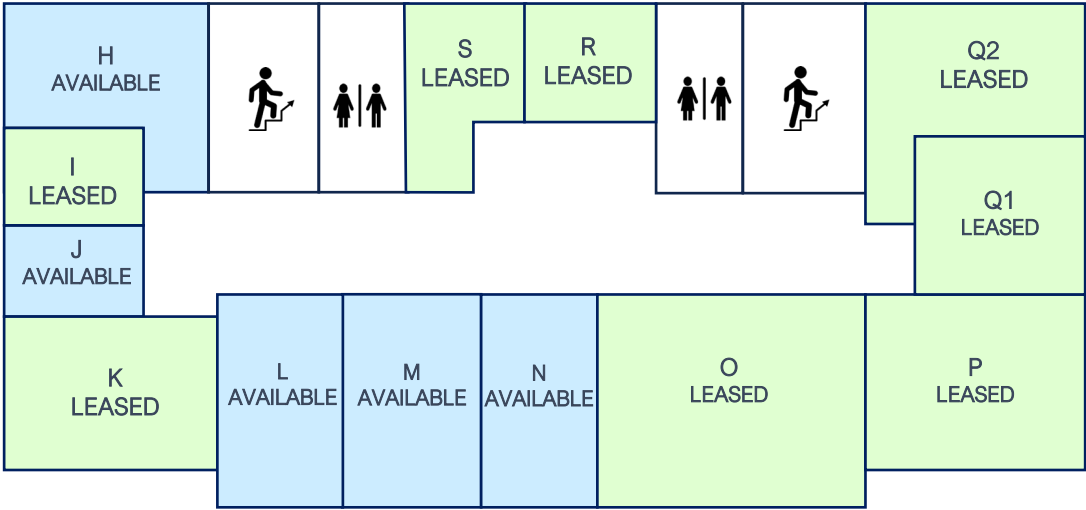




Building 6 Overview



BUILDING 6 FIRST FLOOR



BUILDING 6 SECOND FLOOR

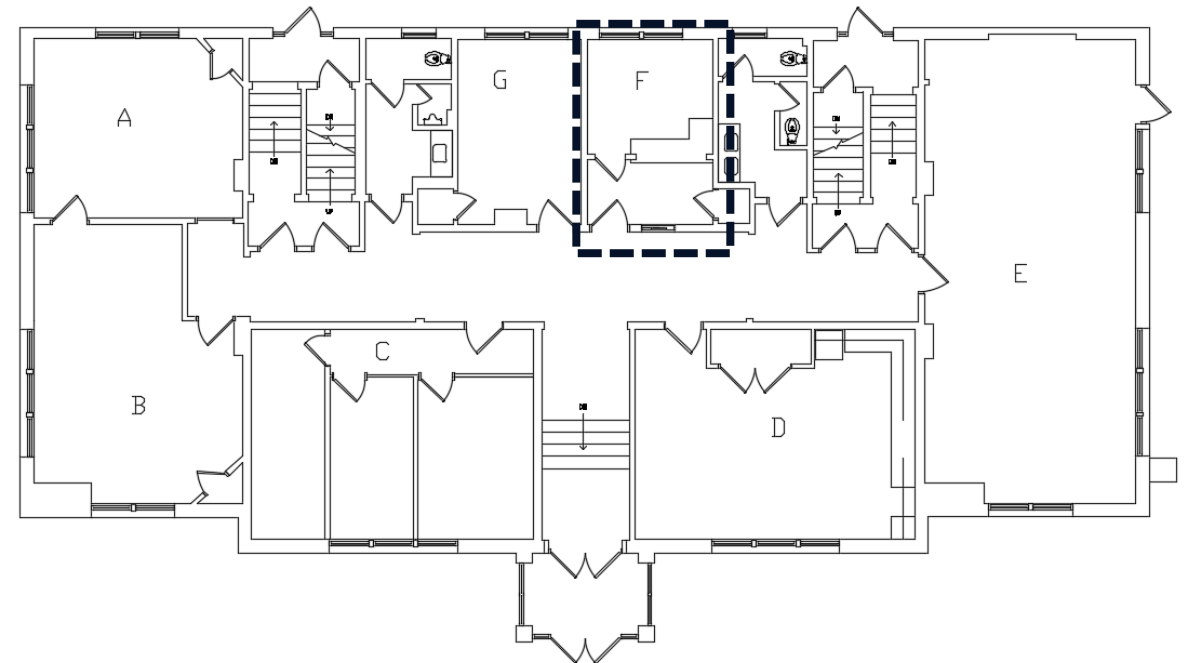
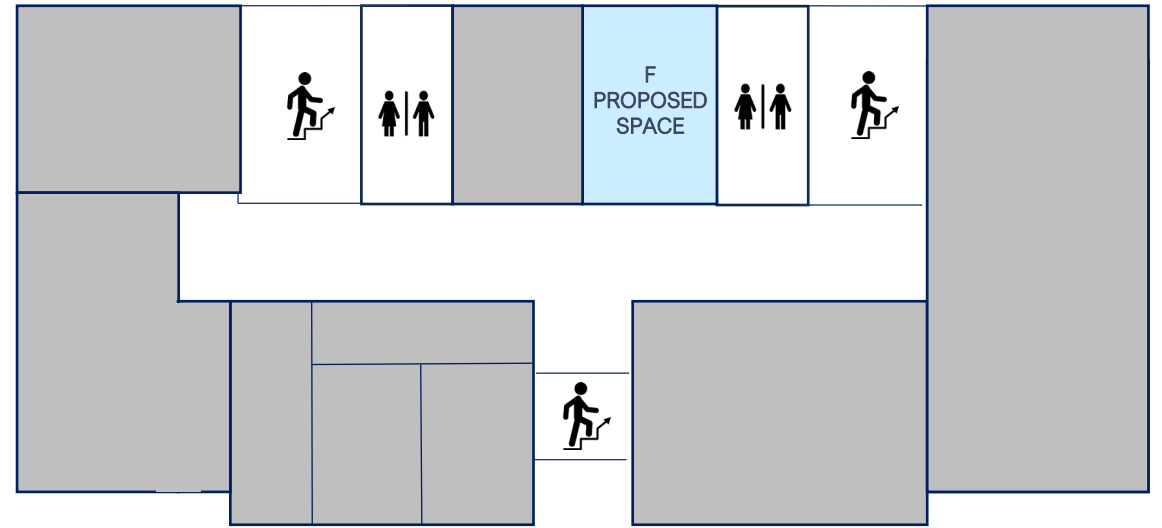
- Available
- Leased

Building 6-Space F

- Fully Renovated Office

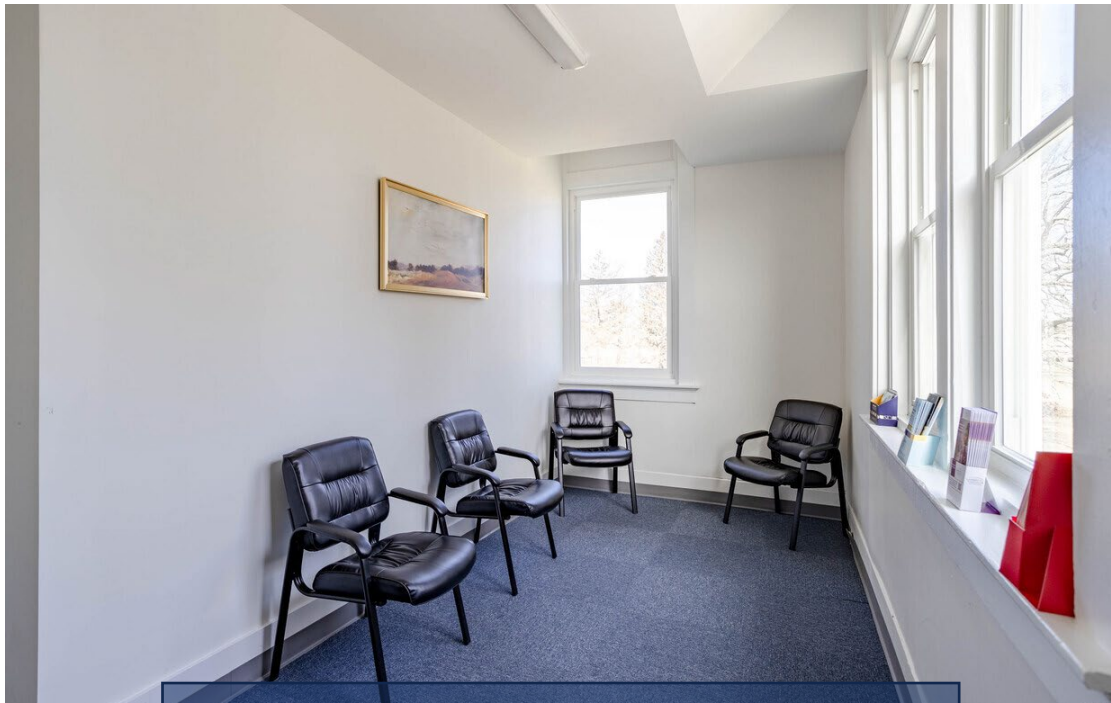


ACTUAL PHOTO OF SPACE F

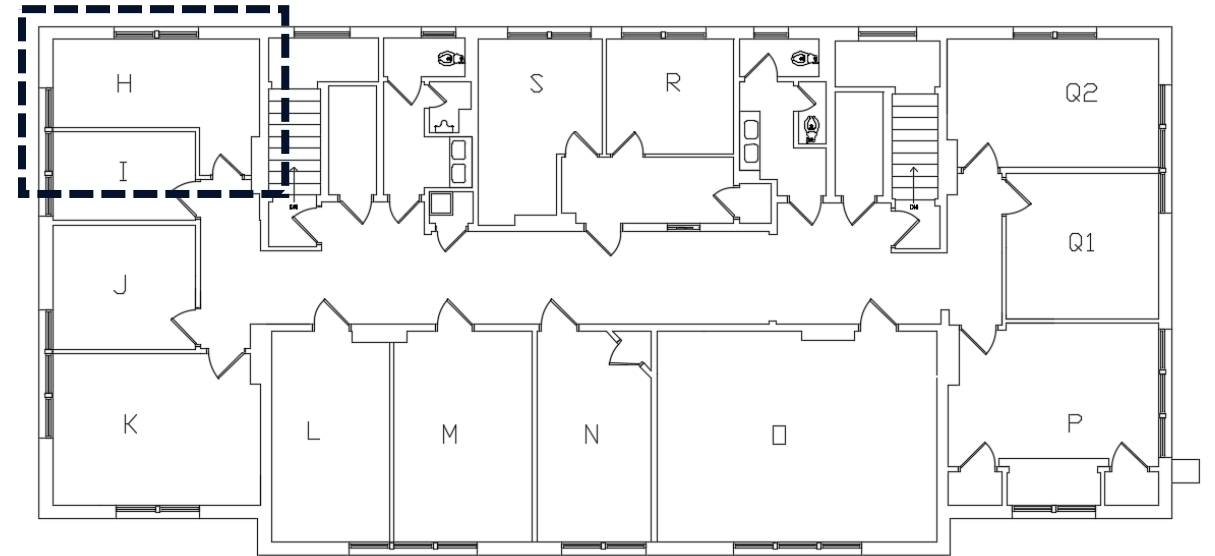
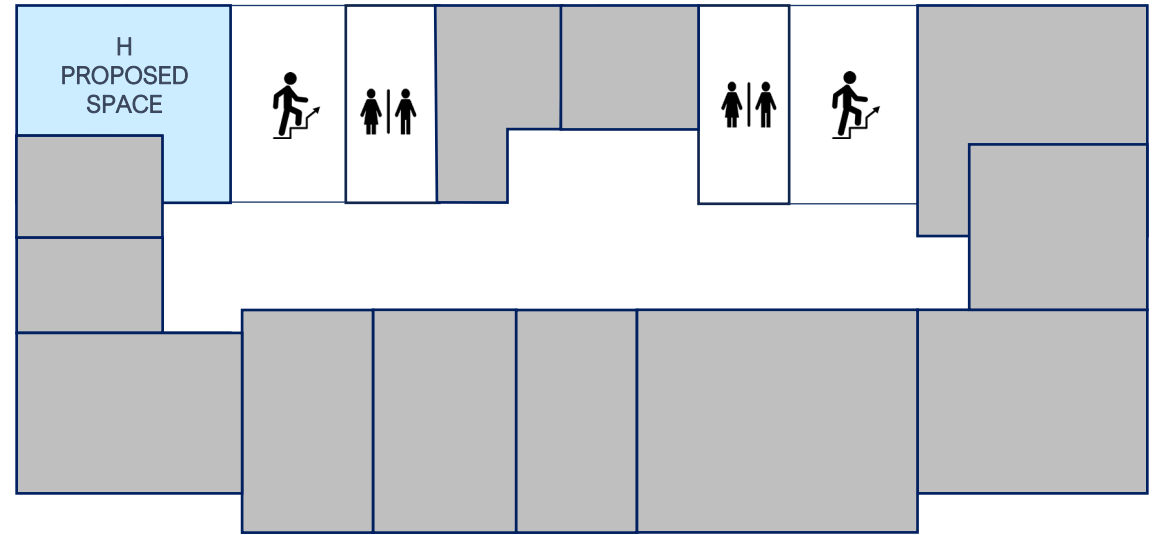


Building 6-Space H

- Fully Renovated Office



ACTUAL PHOTO OF SPACE H

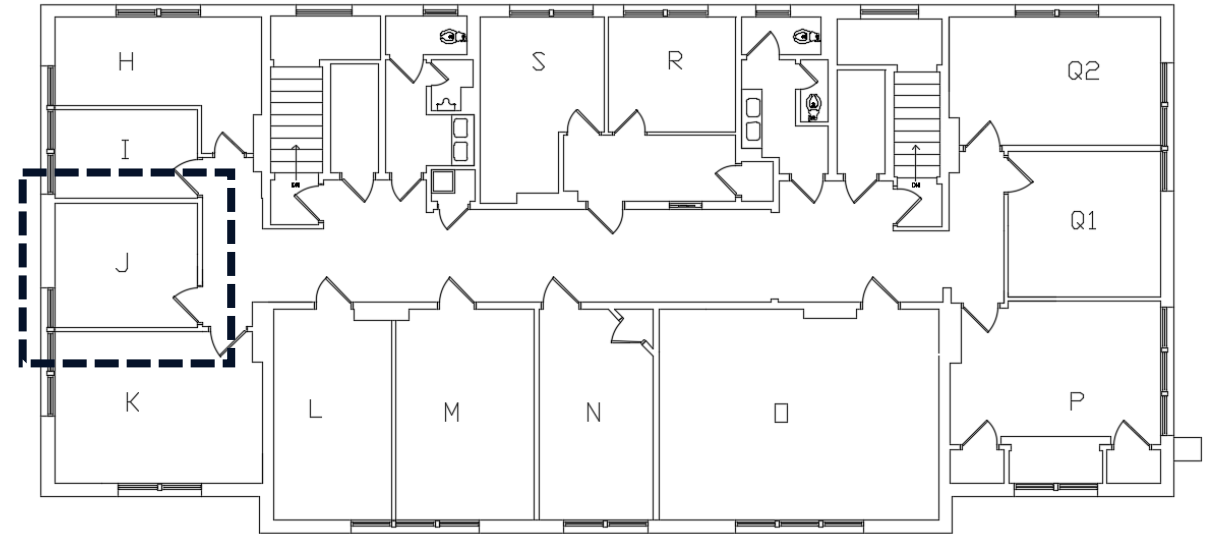
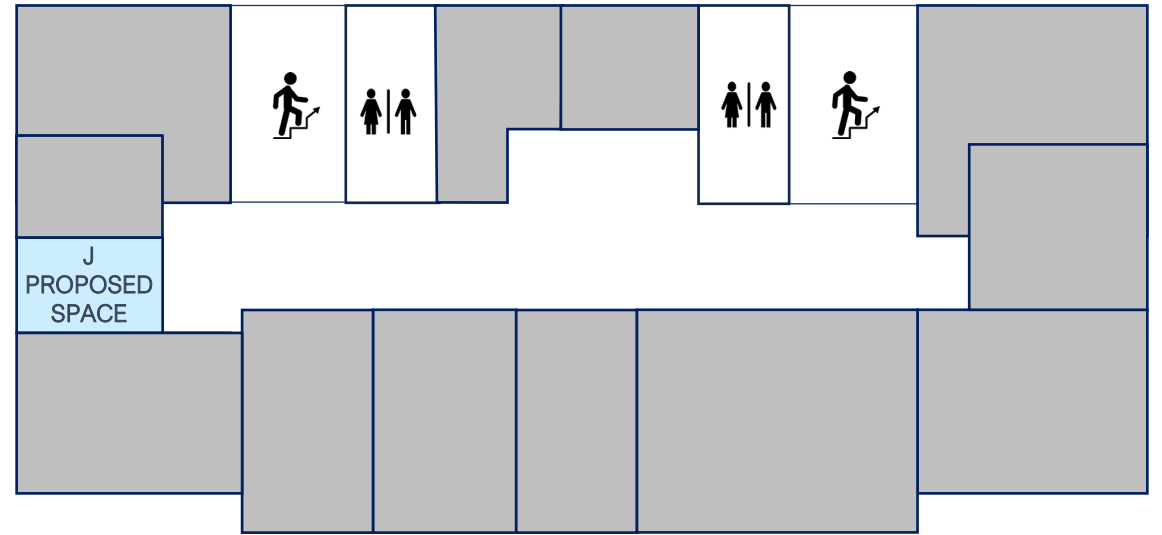


Building 6-Space J

- Fully Renovated Office

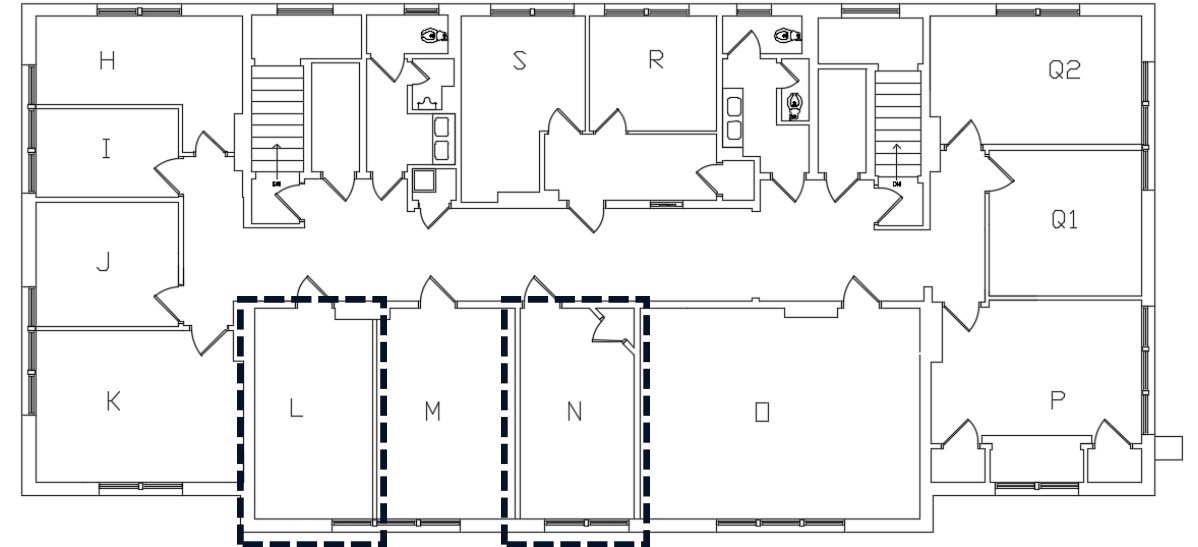
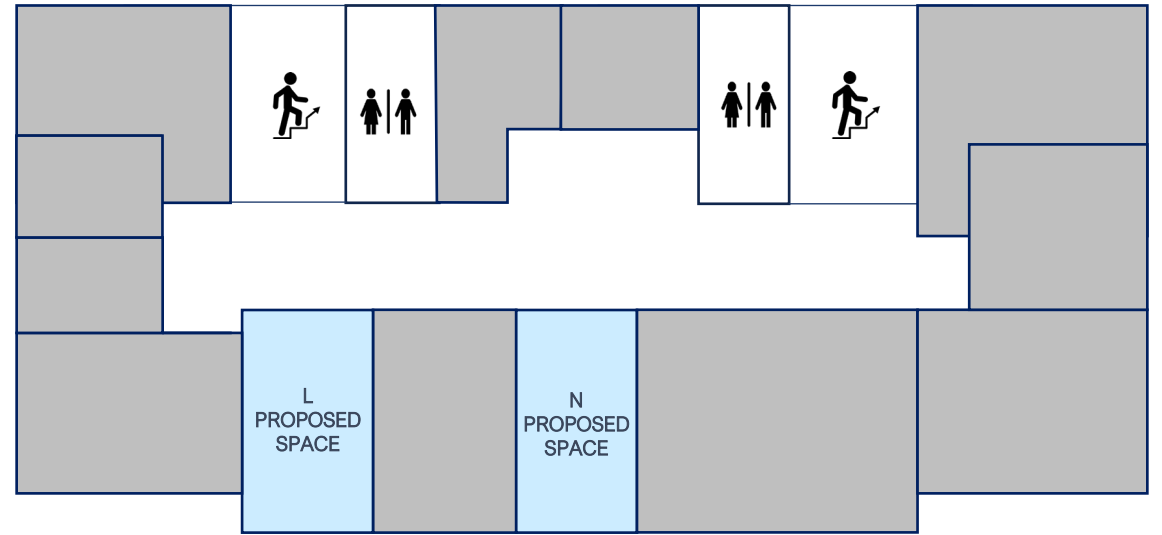
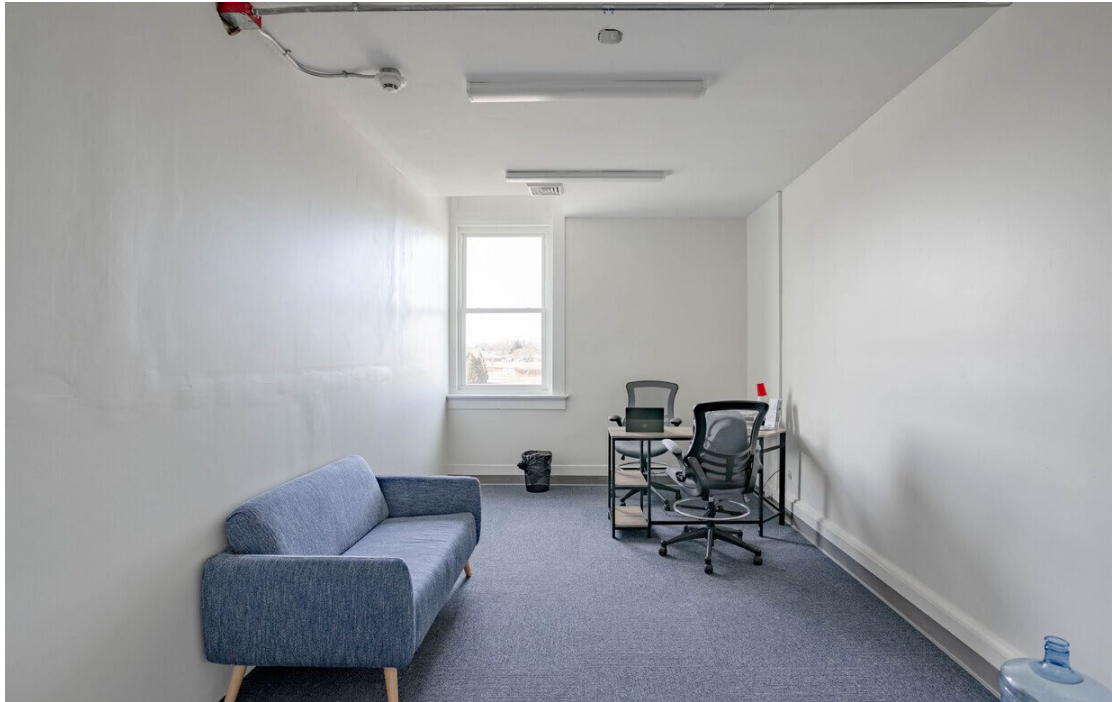


ACTUAL PHOTO OF SPACE J



Building 6-Space L/N

- Fully Renovated Office
- Similar Spaces, N has Closet



Building 6-Space M

- Fully Renovated Office



ACTUAL PHOTO OF SPACE M

