



24604 Klein Ave, Lots 1 and 6 Dell Rapids, SD 57022

PROPERTY HIGHLIGHTS

- Commercial land for sale off I-29/ Dell Rapids Exit
- Located at Dell Rapids Exit and Highway 115
- Small lots, flexible for small users
- Access to the development on Klein Avenue
- Parcels can be bought together or separate
- Vehicles Per Day on Highway 115: 2,019

LOCATION DESCRIPTION

Located off the Dell Rapids exit on I-29. Neighboring businesses include Billion Auto - Chevrolet, Troy's Wood Specialties, Dells Veterinary Services, Wolles MFG, Fieber Diesel Services and more.

Sale Price	\$499,000
Land Size	2.73 AC (+/- 118, 919 SF)
Price per SF	\$4.20/SF



MARCUS MAHLEN, CCIM, SIOR
President
mmahlen@naisiouxfalls.com
605.228.9744



BRODY ETRHEIM
Broker Associate
betrheim@naisiouxfalls.com
605.251.7625

2500 W. 49th St. Suite 100
Sioux Falls, SD 57105
605.357.7100
naisiouxfalls.com

PHOTOS

24604 KLEIN AVE
Dell Rapids, SD 57022

FOR SALE

Land

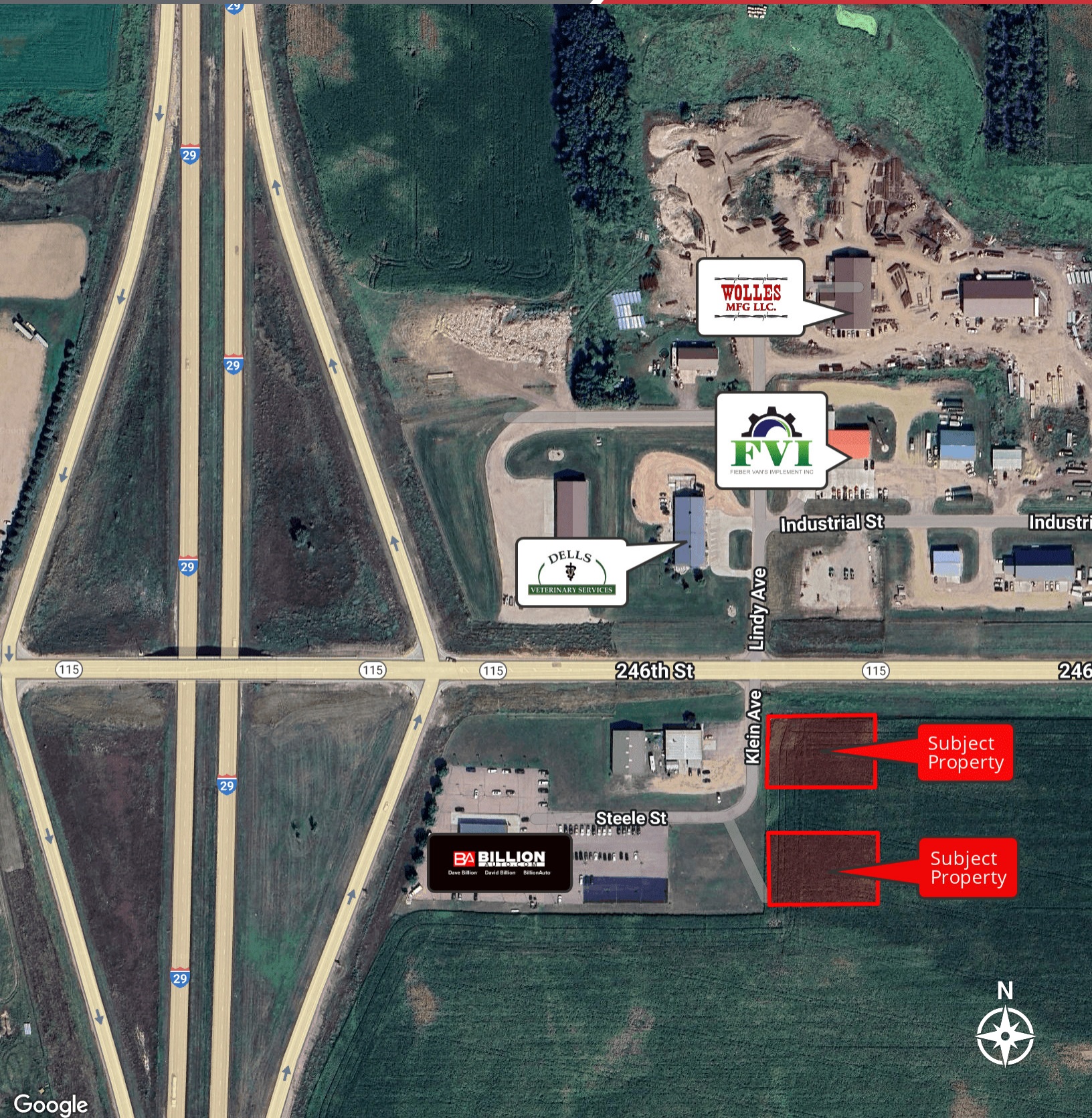


LOCATION MAP

24604 KLEIN AVE
Dell Rapids, SD 57022

FOR SALE

Land



2500 W. 49th St. Suite 100
Sioux Falls, SD 57105
605.357.7100
naisiouxfalls.com