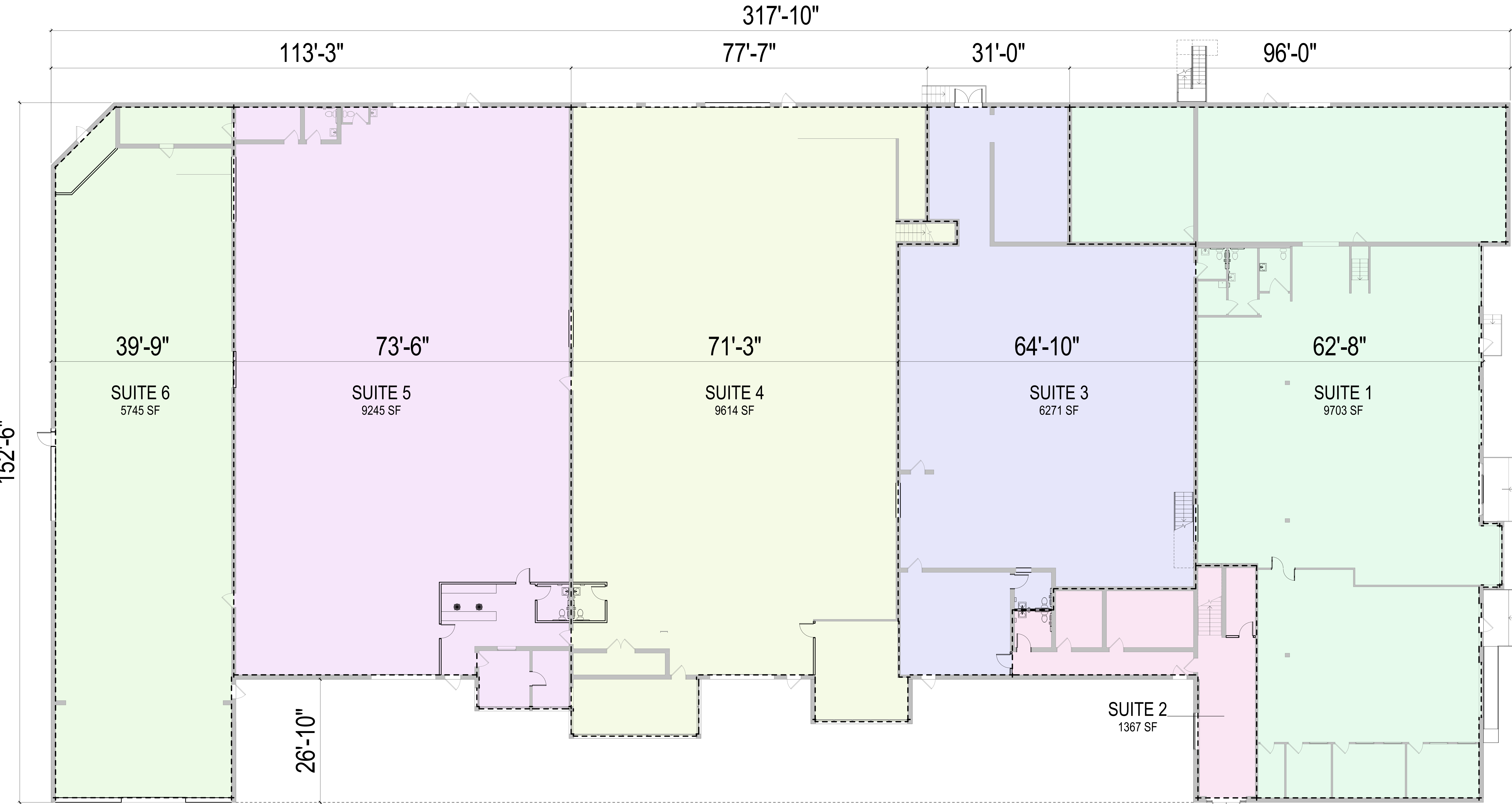


**BIG HORN BUSINESS PARK**

**FULL PLAN**



SECOND LEVEL  
 SUITE 4 = 1,663 SF  
 SUITE 4 = 11,277 SF

SECOND LEVEL  
 SUITE 3 = 1,286 SF  
 SUITE 3 = 7,557 SF

SECOND LEVEL  
 SUITE 2 = 3,074 SF  
 SUITE 2 = 4,441 SF

SUITE 1 = 9,703 SF

SUITE 6 = 5,745 SF

SUITE 5 = 9,245 SF