

INDUSTRIAL BUILDING AVAILABLE

1313 Airport Rd., Plant 3 | Niles, MI 49120



70,946 SF Industrial Building for Sublease

Building:	70,946 SF Total 69,114 SF (Warehouse), 1,832 SF (Office)
Land:	12.9 Acres
Docks:	8
OH Doors:	3
Clearance:	19' to 22'5"
Crane:	10-ton crane
Utilities:	Municipal water, private septic
Power:	1600A/480V/3Ph
HVAC:	Air Rotation & Radiant Tube
Sublease Rate:	\$3.00 PSF NNN

Details:

70,946 SF industrial building with 1,832 SF of office space, situated on 12.9 acres of land. Building features 1600A/480V/3Ph power, 10-ton crane, 8 loading docks, 3 grade level doors and clear ceiling heights from 19' to 22'5". Air rotation and radiant tube heat. Dust collection system in place. City water and private septic.

[VIEW PROPERTY ONLINE](#)



P 574.271.4060 | CRESSY.COM | CONNECT WITH US! [in](#) [t](#) [f](#) [v](#)
200 N. Church St., Suite 200, Mishawaka, IN 46544

Cressy Commercial Real Estate is a Minority Business Enterprise (MBE) as well as certified by the National Native American Supplier Council (NNASC).



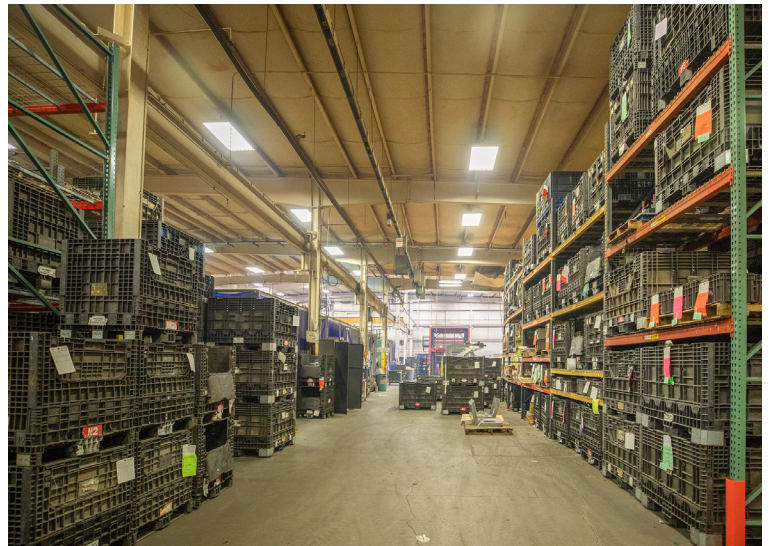
Information furnished regarding property for sale, rental or financing is from sources deemed reliable. But no warranty or representation is made as to the accuracy thereof and same is submitted subject to errors, omissions, change of price, rental or other conditions, prior sale, leased, financing or withdrawal without notice. No liability of any kind is to be imposed on the broker herein. NAI Cressy is the Global Brokerage Division of Cressy Commercial Real Estate.

Ryan Gableman, CCIM/SIOR
Senior Broker, Principal
D 574.485.1502 | C 574.215.0336
rgableman@cressy.com

PROPERTY PHOTOS

INDUSTRIAL BUILDING AVAILABLE

1313 Airport Rd., Plant 3 | Niles, MI 49120



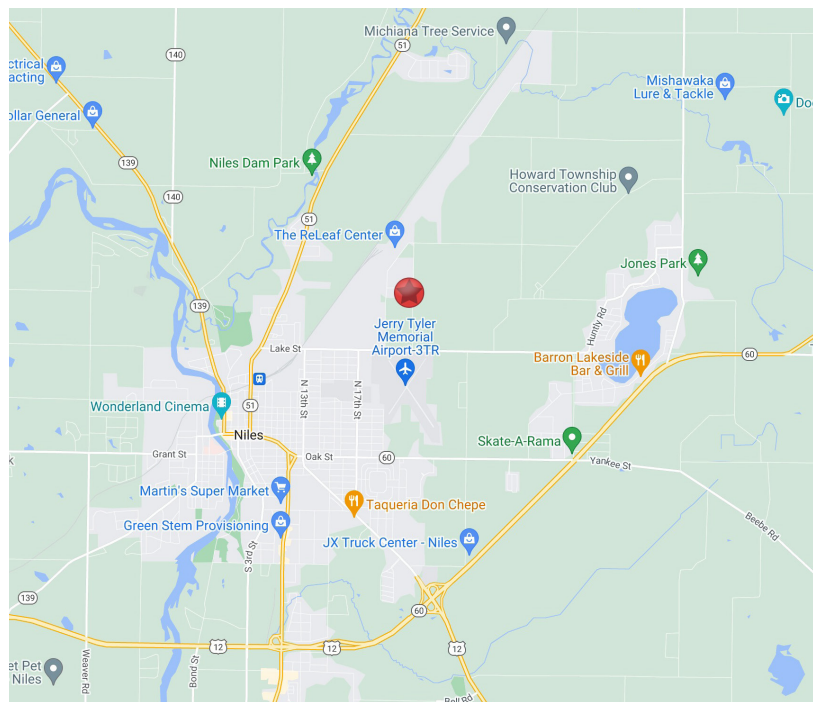
LOCATION OVERVIEW

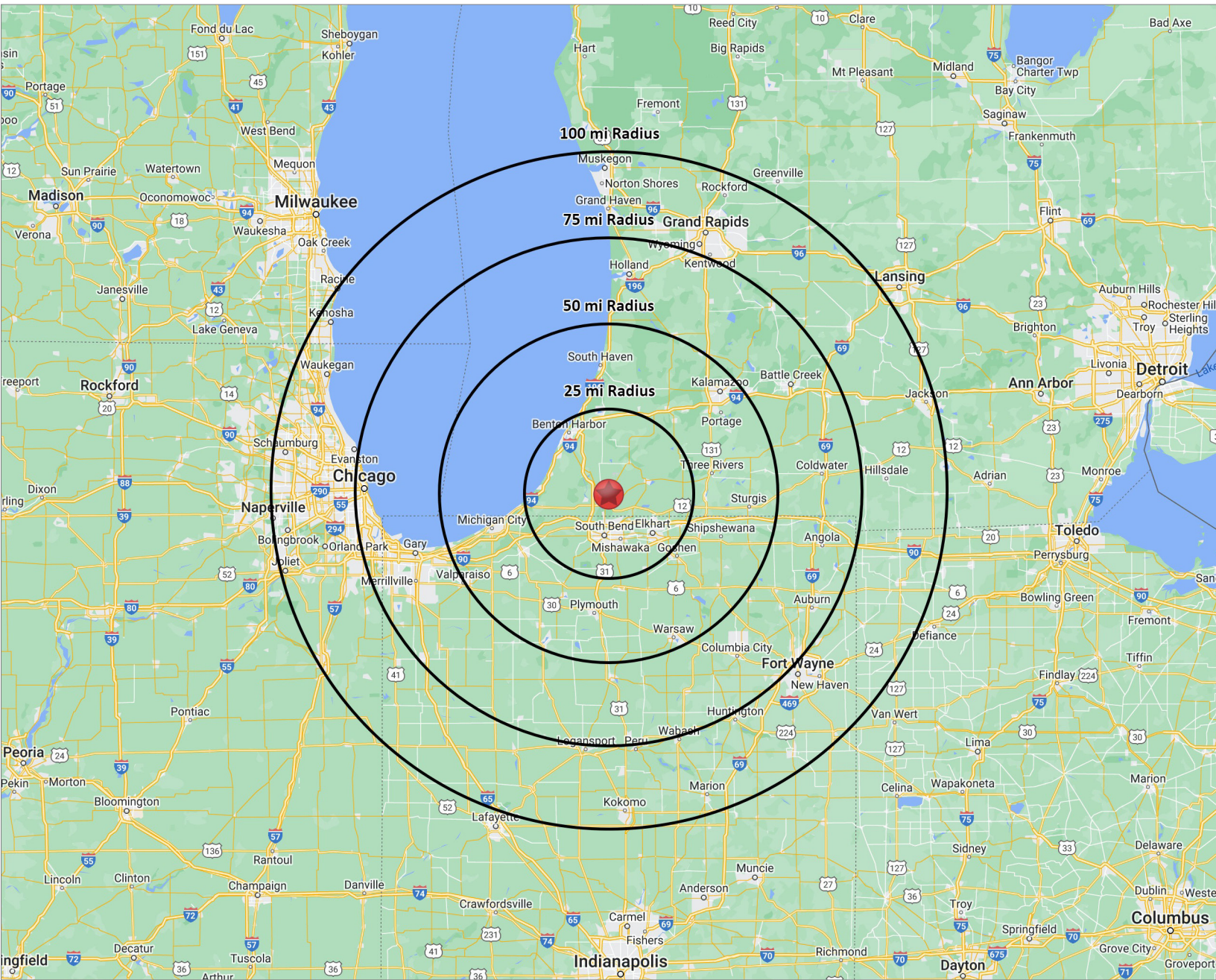
INDUSTRIAL BUILDING AVAILABLE

1313 Airport Rd., Plant 3 | Niles, MI 49120



- Located within the Niles Industrial Park surrounded by other various industrial users.
- Very accessible location, three miles from US-12 and M-60 and two miles from M-51.
- Within three miles of downtown Niles, MI and 15 miles from the South Bend International Airport.





DISTANCE TO MAJOR CITIES

CHICAGO, IL	98 MILES
GRAND RAPIDS, MI	103 MILES
FORT WAYNE, IN	109 MILES
TOLEDO, OH	158 MILES

INDIANAPOLIS, IN	166 MILES
DETROIT, MI	194 MILES
MILWAUKEE, WI	197 MILES
CINCINNATI, OH	264 MILES