

Sec. 39-112. - Outdoor lighting.

(a) Definitions. For purposes of interpreting this section, the following terms shall be defined as follows:

Adaptive controls shall mean device such as motion sensors, timers, and dimmers used in concert with outdoor lighting equipment to vary the intensity or duration of lighting operation.

Ambient light shall mean the general overall level of lighting in an area.

B.L.G. shall mean a luminaire classification system that classifies beamlight ("B"), uplight ("U"), and glare ("G").

Bulb shall mean the source of electric light to be distinguished from the whole assembly (see luminaire).

Correlated color temperature ("CCT") shall mean a measure in degrees Kelvin ("K") of light's whiteness or coarseness.

Fixture shall mean the assembly that holds the bulb in a lighting system. It includes the elements designed to give light output control such as a reflector (mirror) or refractor (lens), the ballast, housing, and the attachment parts.

Floodlights shall mean luminaires produced on a surface one foot (1') from a uniform point source of one (1) candela.

Full cutoff fixture shall mean a fixture that provides a luminous intensity of zero at or above an angle of ninety degrees (90°) above the vertical axis, and no more than ten percent (10%) of bulb lumens at or above an angle of ninety degrees (90°).

Glare shall mean a light that is brighter than the brightness of the nearby lighting to which the eyes are adapted and that may reduce visibility or have a temporary blinding effect.

Green screen shall mean vegetation planted around the perimeter of a building or garage structure, either in containers, along trellises, or in the ground, and used as an architectural tool to block light trespass from the site into the public sphere.

Hardscape shall mean site design elements, such as driveways, skirts, curbs, ramps, walls, fountains, and statues, comprised of hardscaping materials, such as asphalt, concrete, stone, and wrought iron.

HPS shall mean high pressure sodium.

Illuminating Engineering Society of North America ("IES") or "IESNA" shall mean the professional society of lighting engineers, including those from manufacturing companies, and others professionally involved in lighting.

Incandescent light shall mean light produced by a filament heated to a high temperature by electric current.

Intensity shall mean the degree or amount of energy or light.

LED shall mean light emitting diode.

Light trespass shall mean light that illuminates surfaces beyond the property boundary.

LPS shall mean low pressure sodium.

Lumen shall mean a unit of luminous flux; the flux emitted within a unit solid angle by a point source with a uniform luminous intensity of one (1) candela.

Luminaire shall mean a complete lighting unit that usually includes the fixture, ballast, and bulb.

Mercury vapor lighting shall mean a high intensity discharge bulb where the light is produced by radiation from mercury vapor.

Nanometer (nm) shall mean ten to the negative ninth power (10<sup>-9</sup>) meters often used as the unit for wavelength in the electromagnetic spectrum.

Outdoor lighting shall mean the nighttime illumination of an outside area or object by any fixed luminaire.

Point to point shall mean the method used to determine the horizontal illuminance of a specific site.

Shield shall mean an opaque material that blocks the transmission of light.

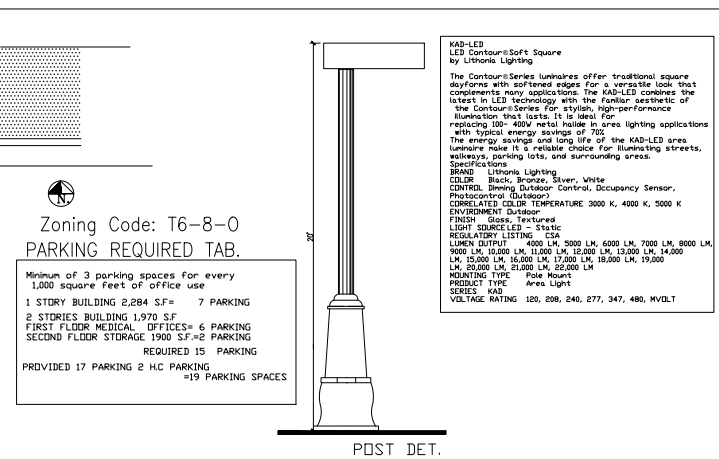
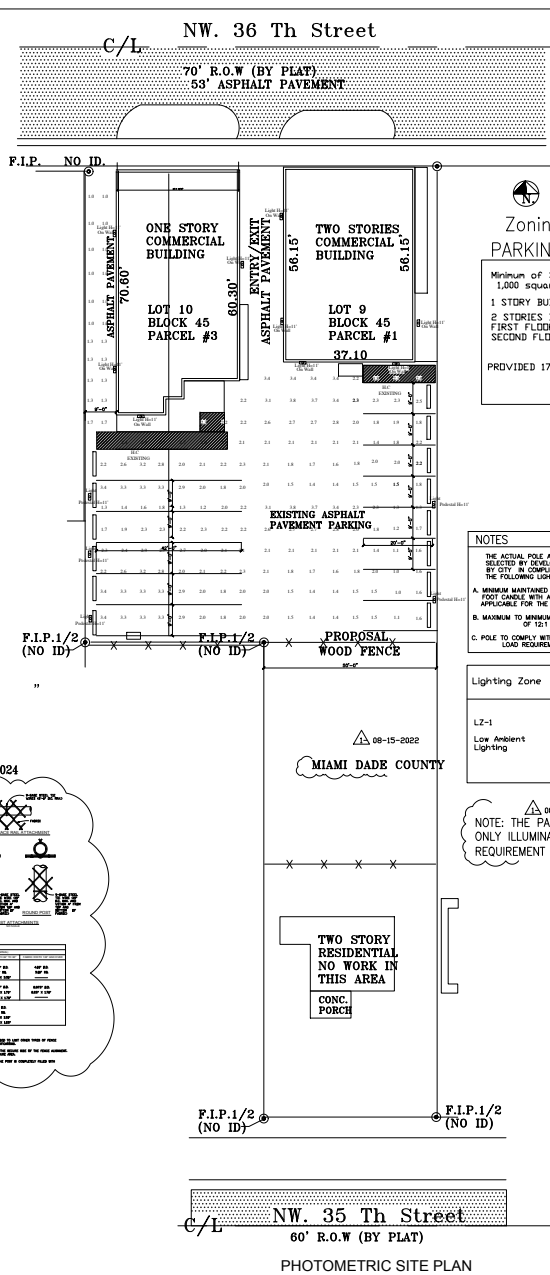
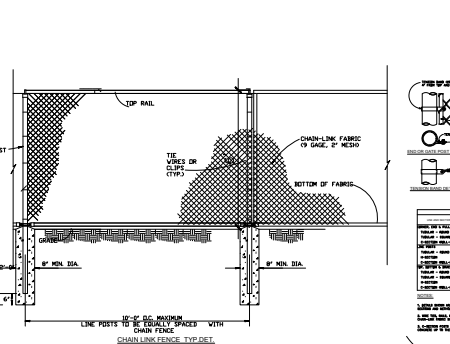
Skyglow shall mean a glow in the night sky caused by the cumulative effect of artificial light sources.

Utility shutoff shall mean action related to essential services, such as treatment of water or wastewater, production of electrical or natural gas power, telecommunications infrastructure, and the handling of solid and hazardous waste.

Wall fixtures shall mean luminaires placed along the outer walls of buildings.

Wildlife friendly lighting shall mean fixtures and bulbs that have been certified by the Florida Fish and Wildlife Conservation Commission through the Wildlife Lighting Certification Program.

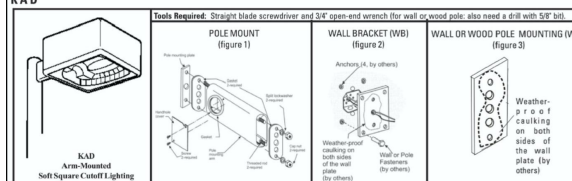
(b) General Provisions. (1) Purpose and intent. The purpose of this section is to establish outdoor lighting standards for new outdoor lighting that will minimize glare, light trespass, and skyglow. The intent is to facilitate the conservation of energy, improve nighttime safety, and protect the privacy of residents, minimize disturbance of wildlife, and enhance the ambience of the community. (2) Lighting Handbook. The current edition of the "IES Lighting Handbook," published by the IESNA, is the standard to be used for the design and testing of parking facility lighting. The standards contained therein shall apply unless standards of this section are more restrictive, in which case the more restrictive standards shall apply. (3) Compliance. All new outdoor luminaires must comply with the standards of this section. Except as provided in Section 39-112(6)(7)(b), renovation or reconstruction does not require compliance with this section. Compliance is required when renovating parking lots or when replacing parking lot lighting or sections of street lighting with LED lighting. (4) Standards. The following outdoor lighting restrictions shall apply to sites and structures based on their assigned lighting zone as set forth in Table 1, below. Table 1, Temperature, Time, and Lumen Criteria for Lighting Zones.



LUMINAIRE SCHEDULE.				
Symbol	Qty	Catalog#	Desc.	Lamp.
S.A.16	1	LITHONIA kad-led	Square area light Asymetric distribution flat lens, Whouse side SHIELD pole MTD. 25' A.G.	One 400-WATT CLEAR pulse start metal halide vertical 0055 up pos. Lumens [L.F.] Watts 40000 [0.72] 465

Lighting Zone	Site and Structure Classifications	Wavelength/ Temperature	Output Reduction	Total Allowable Lumens per Site 5
LZ-1 Low Ambient Lighting	PARKING LOT	3000K temperature or less 3	Reduce to twenty-five percent (25%) maximum output one (1) hour after sunset 4	One and one-quarter (1 1/4) lumens per SF of hardscape

NOTE: THE PARKING IS EXISTING TO REMAIN ONLY ILLUMINATING THIS AREA PER 40 YEAR REQUIREMENT



SHALL BE PROVIDED WITH A MAINTAINED MINIMUM OF 1.0 FOOT-CANDLE ON THE PARKING SURFACE FROM DUSK UNTIL DAWN. THE UNIFORMITY RATIO (12:1) MAXIMUM TO MINIMUM FOOT-CANDLES. ALLEYS SHALL BE PROVIDED WITH A MAINTAINED MINIMUM OF ONE THIRD (1/3) FOOT-CANDLE ON THE ALLEY SURFACE FROM DUSK TO DAWN. (2) PARKING AND NON ENCLOSED AREAS UNDER, OR WITHIN BUILDINGS SHALL BE PROVIDED WITH A MAINTAINED MINIMUM OF 1.0 FOOT-CANDLE OF LIGHT ON THE WALKING AND PARKING SURFACES FROM DUSK UNTIL DAWN, AND THE RATIO OF MAXIMUM TO MINIMUM ILLUMINATION IN FOOT-CANDLES SHALL NO EXCEED TWELVE TO ONE.

KAD-LED LED Contour=Soft Square by Lithonia Lighting

The Contour=Series luminaires offer traditional square deforms with softened edges for a versatile look that complements many applications. The KAD-LED combines the latest in LED technology with the familiar aesthetic of the Contour=Series for stylish, high-performance illumination that lasts. It is ideal for replacing 100-400W metal halide in area lighting applications with typical energy savings of 70%.

The energy savings and long life of the KAD-LED area luminaire make it a reliable choice for illuminating streets, walkways, parking lots, and surrounding areas.

Specifications

BRAND: Lithonia Lighting

COLOR: Black, Bronze, Silver, White

CONTROL: Being, Outdoor Control, Occupancy Sensor, Photocontrol (Outgoing)

CORRELATED COLOR TEMPERATURE: 3000 K, 4000 K, 5000 K

ENVIRONMENT: Outdoor

FINISH: Gloss, Textured

REGULATORY LISTING: CSA

LIGHT SOURCE: LED - Static

LUMEN OUTPUT: 4000 LM, 5000 LM, 6000 LM, 7000 LM, 8000 LM, 9000 LM, 10,000 LM, 11,000 LM, 12,000 LM, 13,000 LM, 14,000 LM, 15,000 LM, 16,000 LM, 17,000 LM, 18,000 LM, 19,000 LM, 20,000 LM, 21,000 LM, 22,000 LM

MOUNTING TYPE: Pole Mount

PRODUCT TYPE: Area Light

SERIES: KAD

VOLTAGE RATING: 120, 208, 240, 277, 347, 480, MVOLT

DRAWN BY: sepe

ADRIANA GARCES

sepe

HERNANDEZ STRUCTURAL DESIGN INC.

STRUCTURAL CONSULTANTS, INSPECTIONS, INVESTIGATIONS

Victor Hernandez, P.E., S.E., F.T.S.P.

CA 29834

FL 06050

Tel: 954-247-1388 Cell: 754-422-9786

INTERIOR REMODELING OFFICES

AFTER THE FACT

INSPECTION

VIOLATION #80002

EXISTING AND DEMO FLOOR PLAN

Property Address: 32-70 N.W. 36 Street

Miami, Florida 33142

Revisions:

1-05-01-2023

2-11-01-2023

3-01-12-2024

SHEET NO.:

CTPI-1

DATE: 01-05-2023

SCALE: 1/8\"/>

FLORIDA BUILDING CODE

2020 7TH EDITION

EXISTING

NEC 2017

PERMIT SET