



300 4th Street

Elyria, OH 44035



Larry Steinbacher

Century 21 Transcendent Realty
1105 S Court St, Medina, OH 44256

Lorenz.steinbacher@gmail.com

(330) 241-5370



300 4th Street Elyria, OH 44035-5771

\$8.33 /SF/YR

3,600SF of office space is available for you within close proximity to downtown Elyria. The space consists of 10 offices, 2 private bathrooms, full kitchen, reception area and waiting areas. Off street parking is available and your monthly rent includes gas, water & trash. This is the perfect space for a law office, doctors office, clinic, general office space, chiropractic care, an accountant and more. Units can be leased separately. Unit A - 2,200 SF \$ 1,700 Month. Unit B - 1,200 SF \$900 Month.....

- 3,600SF of Office Space/ Lease Both or Separately
- Close Proximity to downtown Elyria
- 10 Offices, 2 Private bathrooms, Full Kitchen
- Off-Street Parking

For more information visit:

<https://www.loopnet.com/Listing/300-4th-St-Elyria-OH/34096094/>



Rental Rate: \$8.33 /SF/YR

Property Type: Office

Property Subtype: Office/Residential

Building Class: C

Rentable Building Area: 6,000 SF

Year Built: 1920

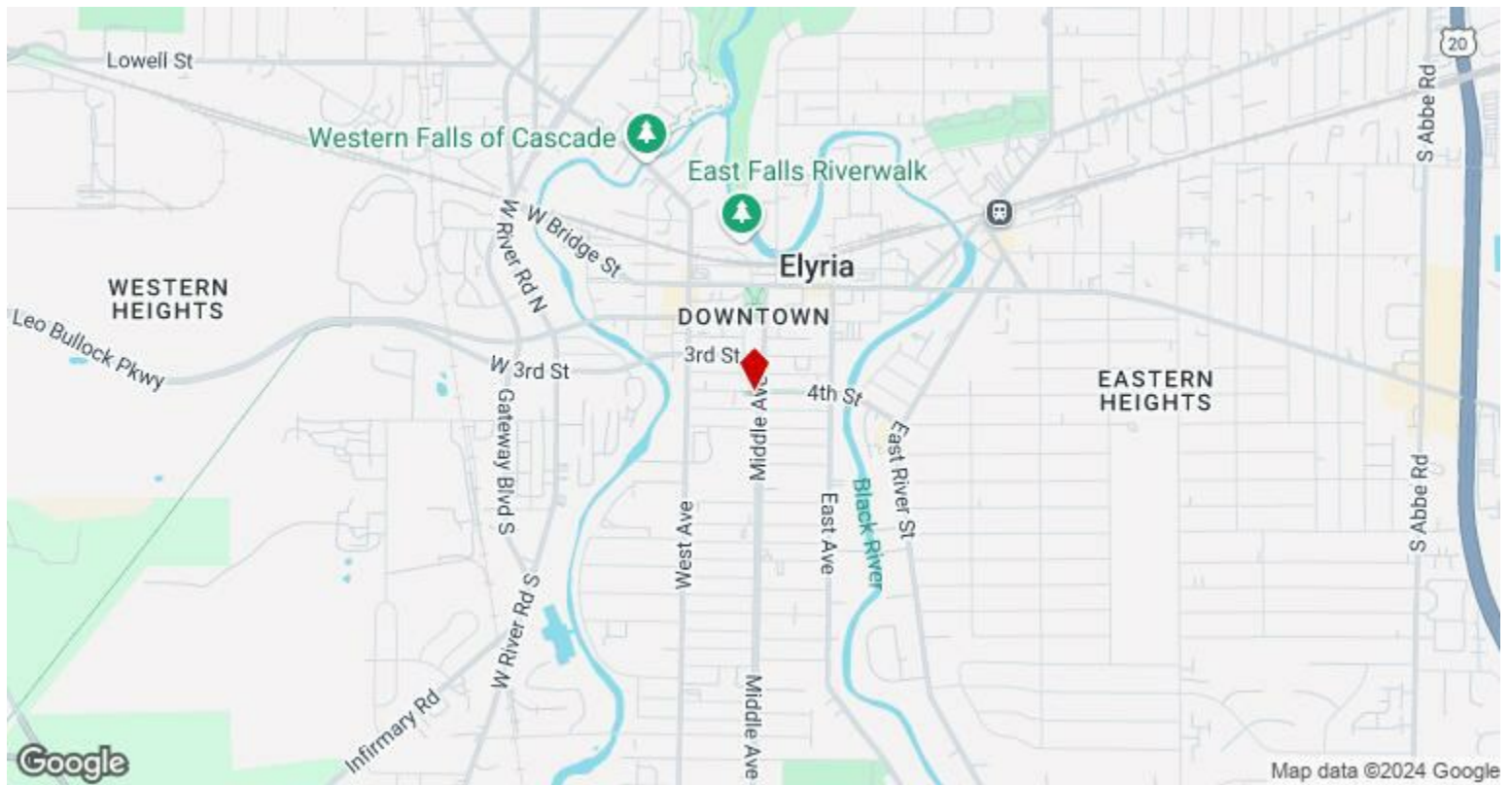
Walk Score ®: 72 (Very Walkable)

Rental Rate Mo: \$0.69 /SF/MO

1st Floor Ste A & B

Space Available	3,600 SF
Rental Rate	\$8.33 /SF/YR
Date Available	December 06, 2024
Service Type	Full Service
Space Type	Relet
Space Use	Office/Medical
Lease Term	1 Years

3,600SF of office space is available for you within close proximity to downtown Elyria. The space consists of 10 offices, 2 private bathrooms, full kitchen, reception area and waiting areas. Off street parking is available and your monthly rent includes gas, water & trash. This is the perfect space for a law office, doctors office, clinic, general office space, chiropractic care, an accountant and more.



300 4th St, Elyria, OH 44035

3,600SF of office space is available for you within close proximity to downtown Elyria. The space consists of 10 offices, 2 private bathrooms, full kitchen, reception area and waiting areas. Off street parking is available and your monthly rent includes gas, water & trash. This is the perfect space for a law office, doctors office, clinic, general office space, chiropractic care, an accountant and more. Units can be leased separately. Unit A - 2,200 SF \$ 1,700 Month. Unit B - 1,200 SF \$900 Month.

Property Photos



Front door



Unit a lobby b

Property Photos

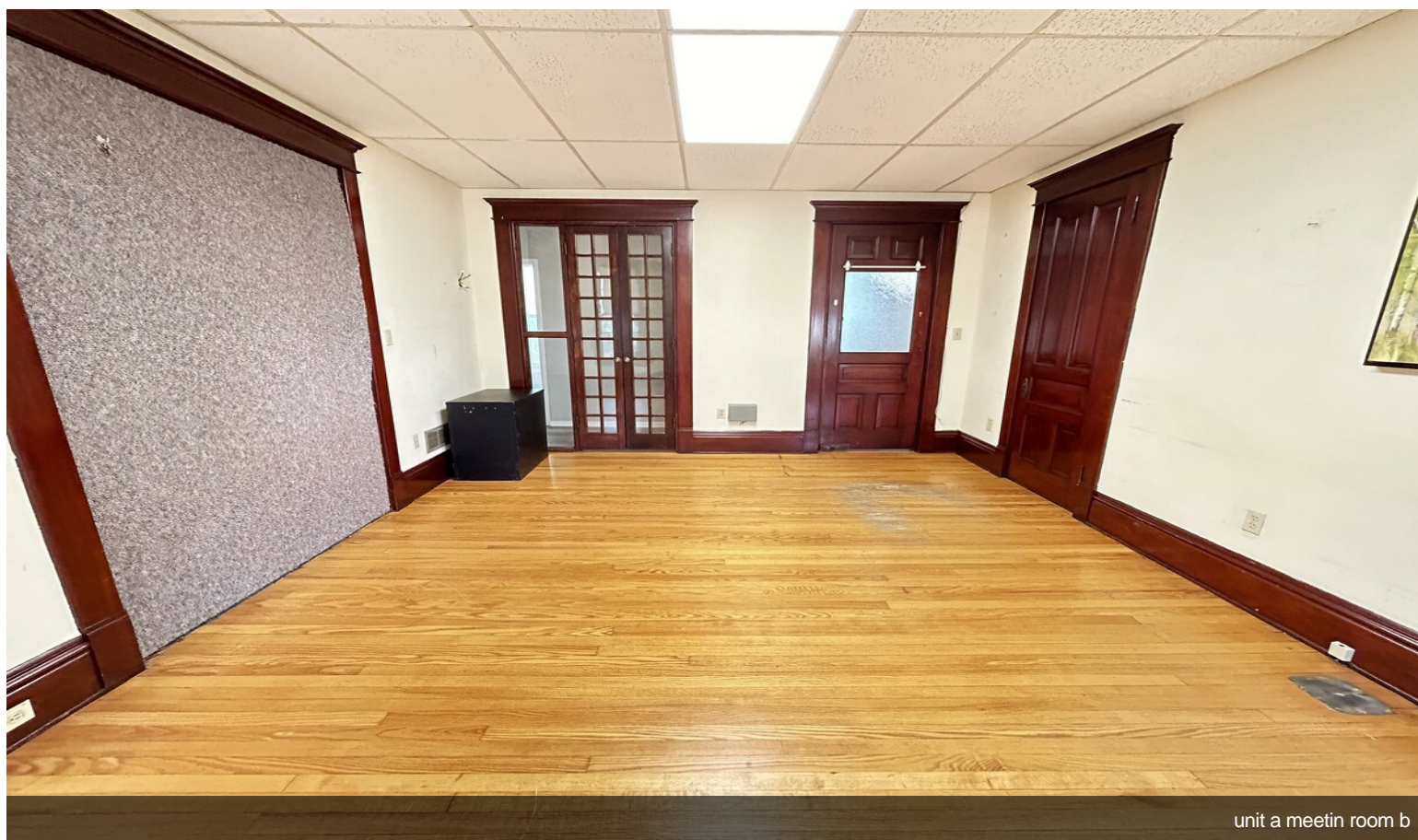


Unit A lobby a



Unit a lobby c

Property Photos



Property Photos

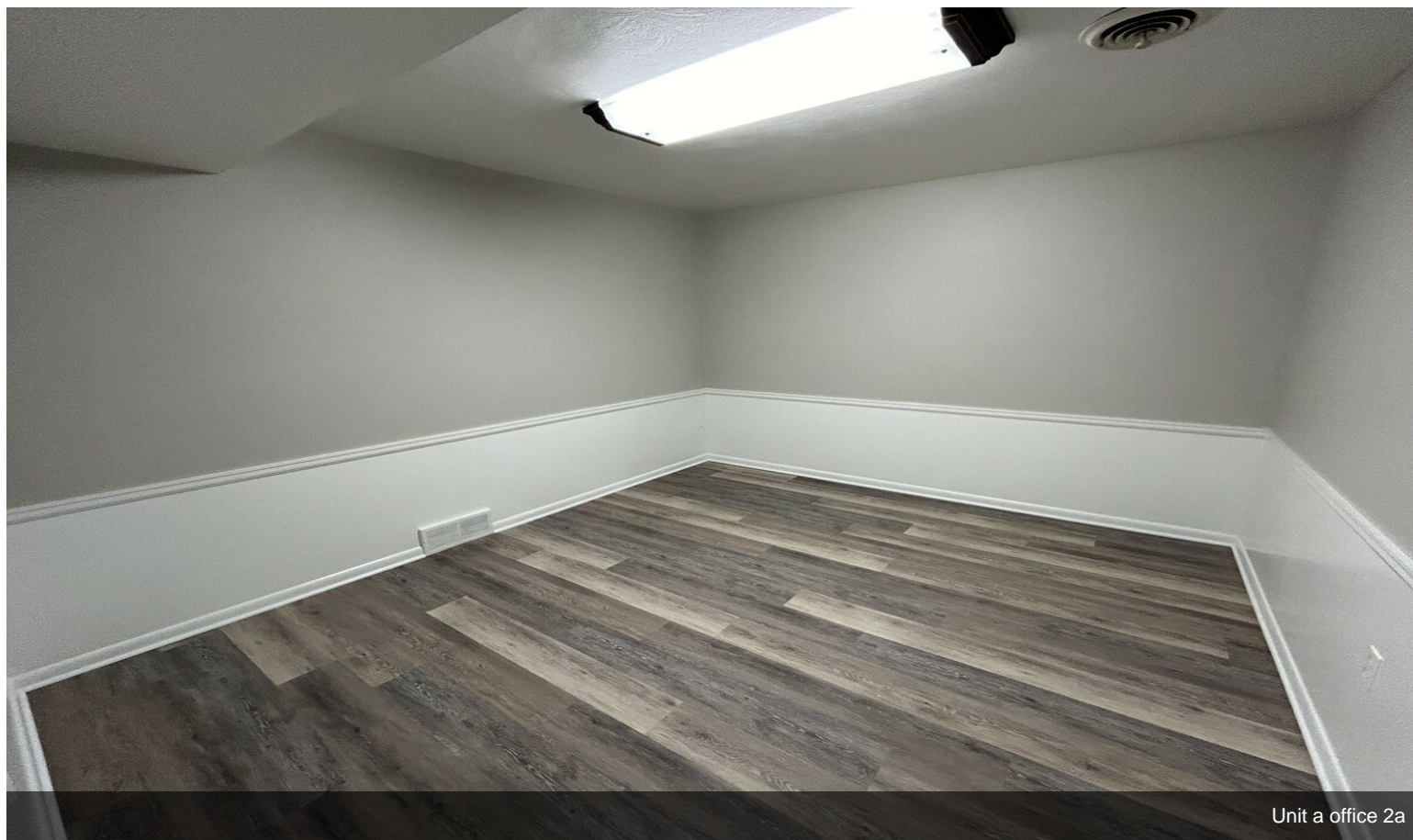


Unit a meeting room a



Unit a office 1

Property Photos

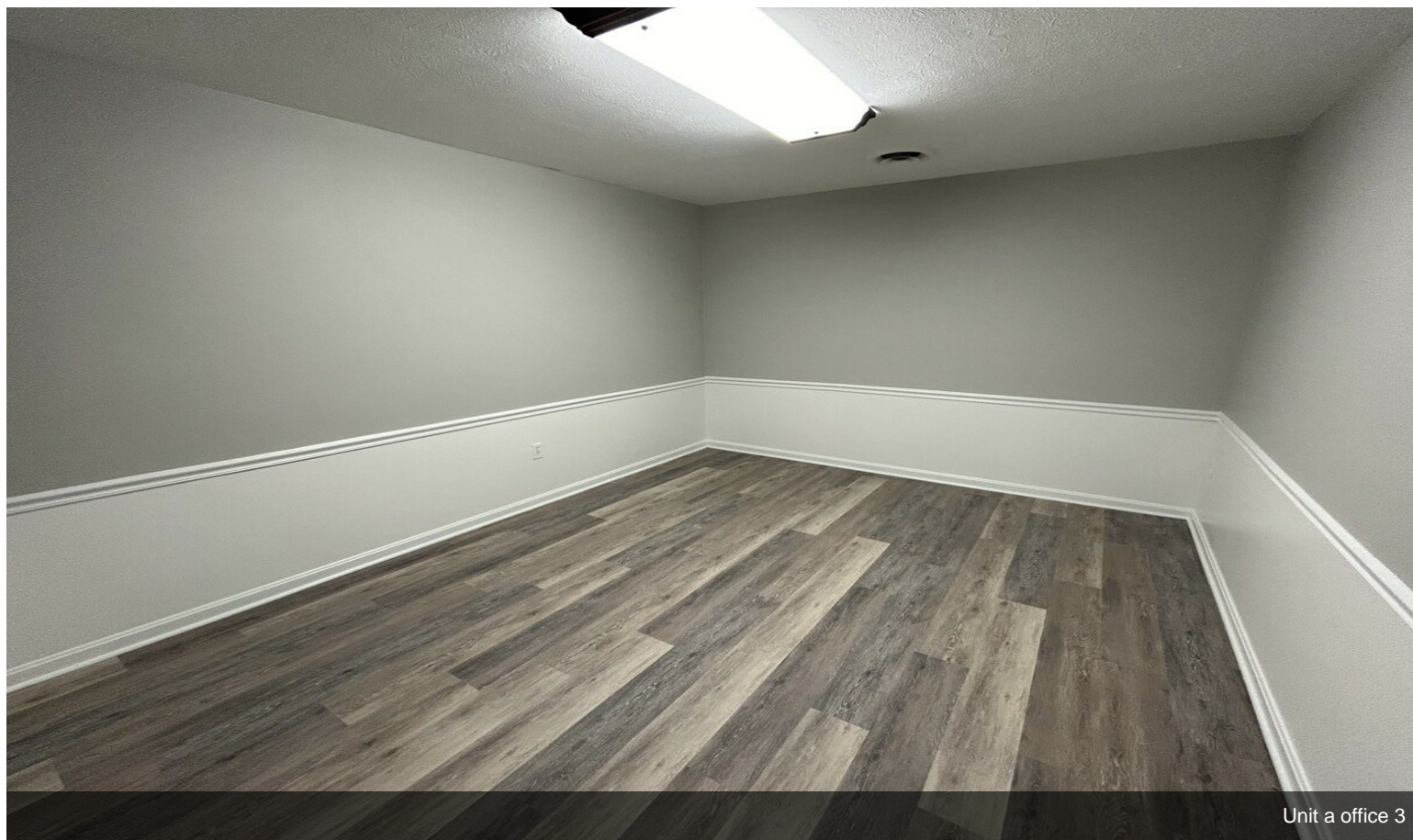


Unit a office 2a

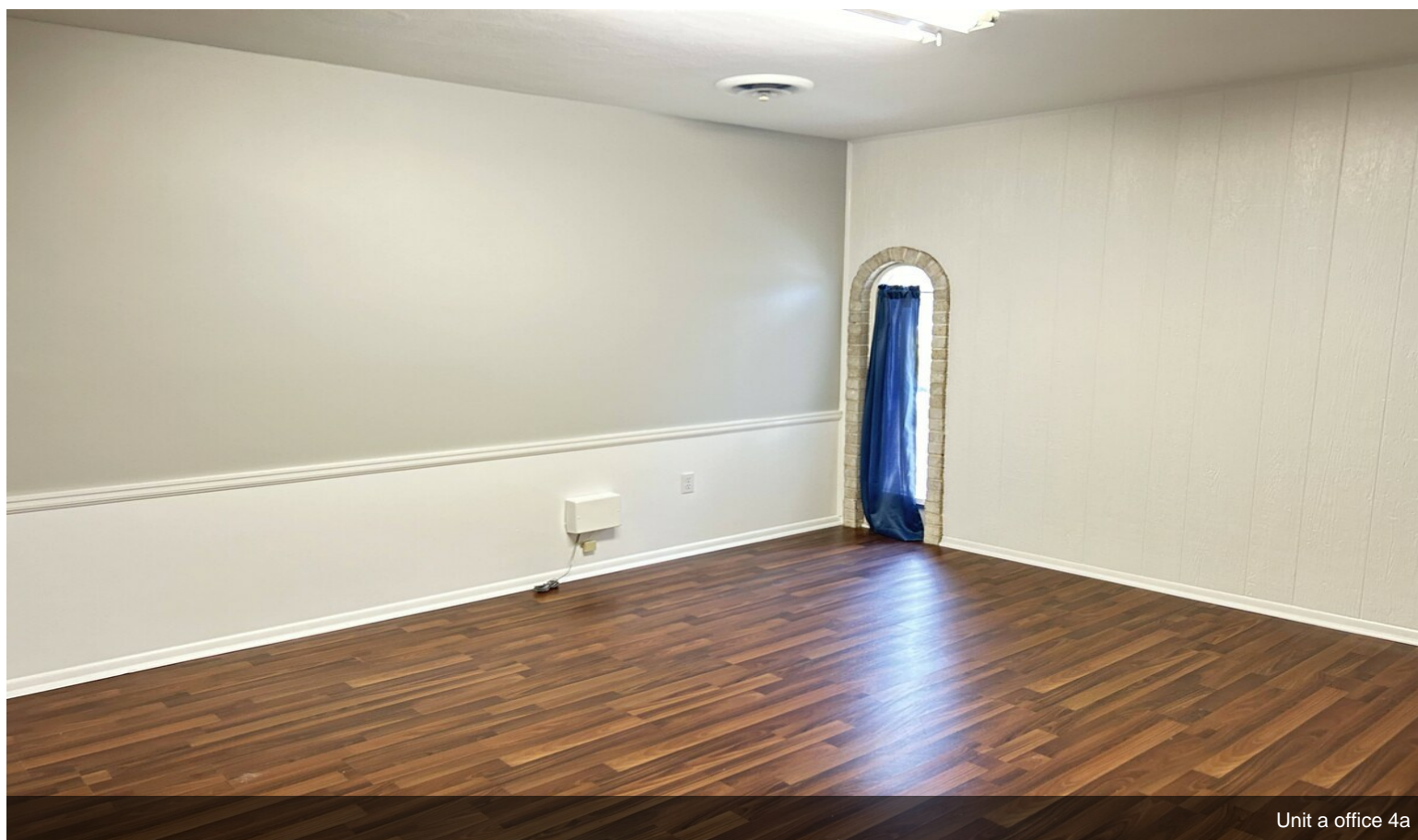


Unit a office 2b

Property Photos



Unit a office 3

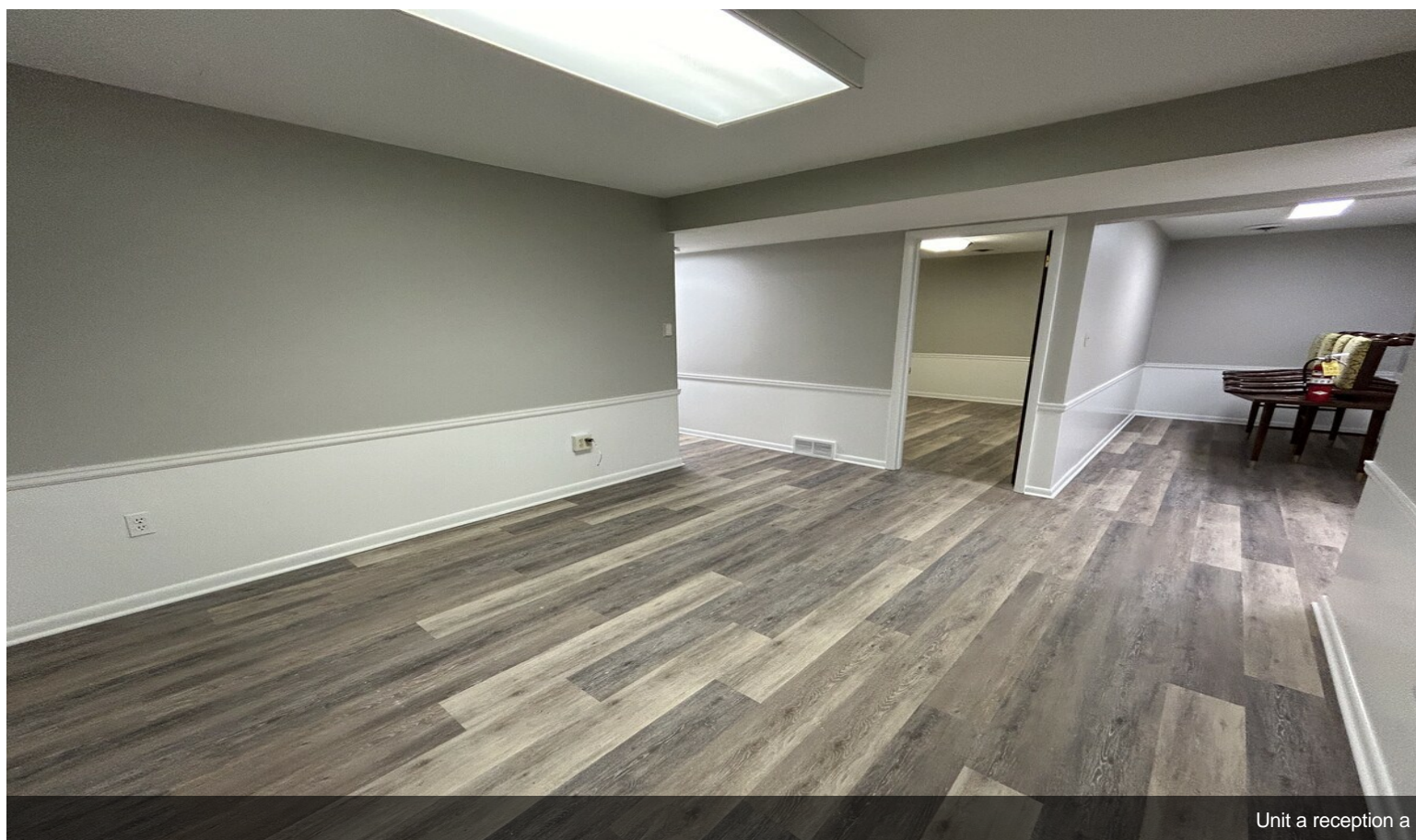


Unit a office 4a

Property Photos



Unit a office 5a

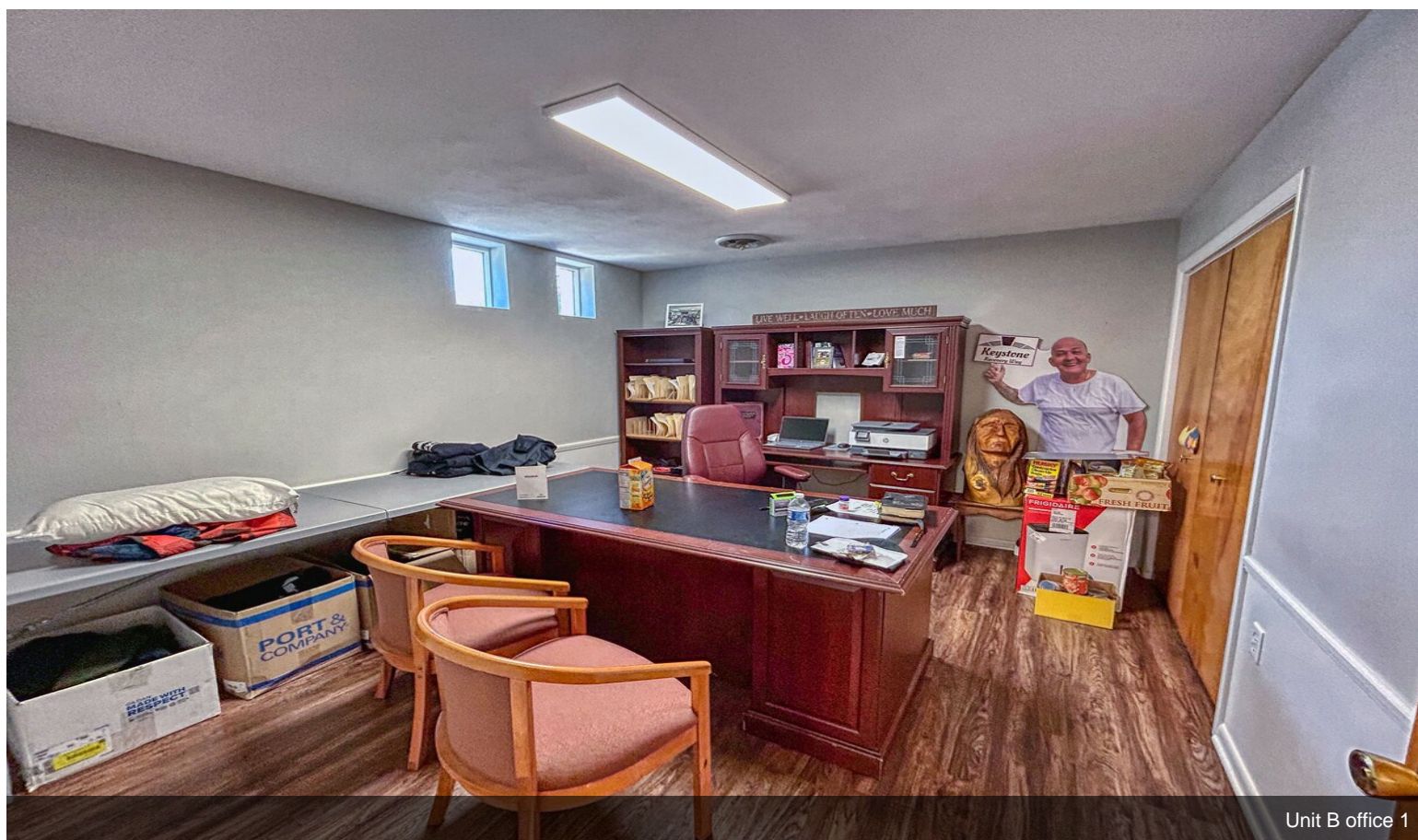


Unit a reception a

Property Photos

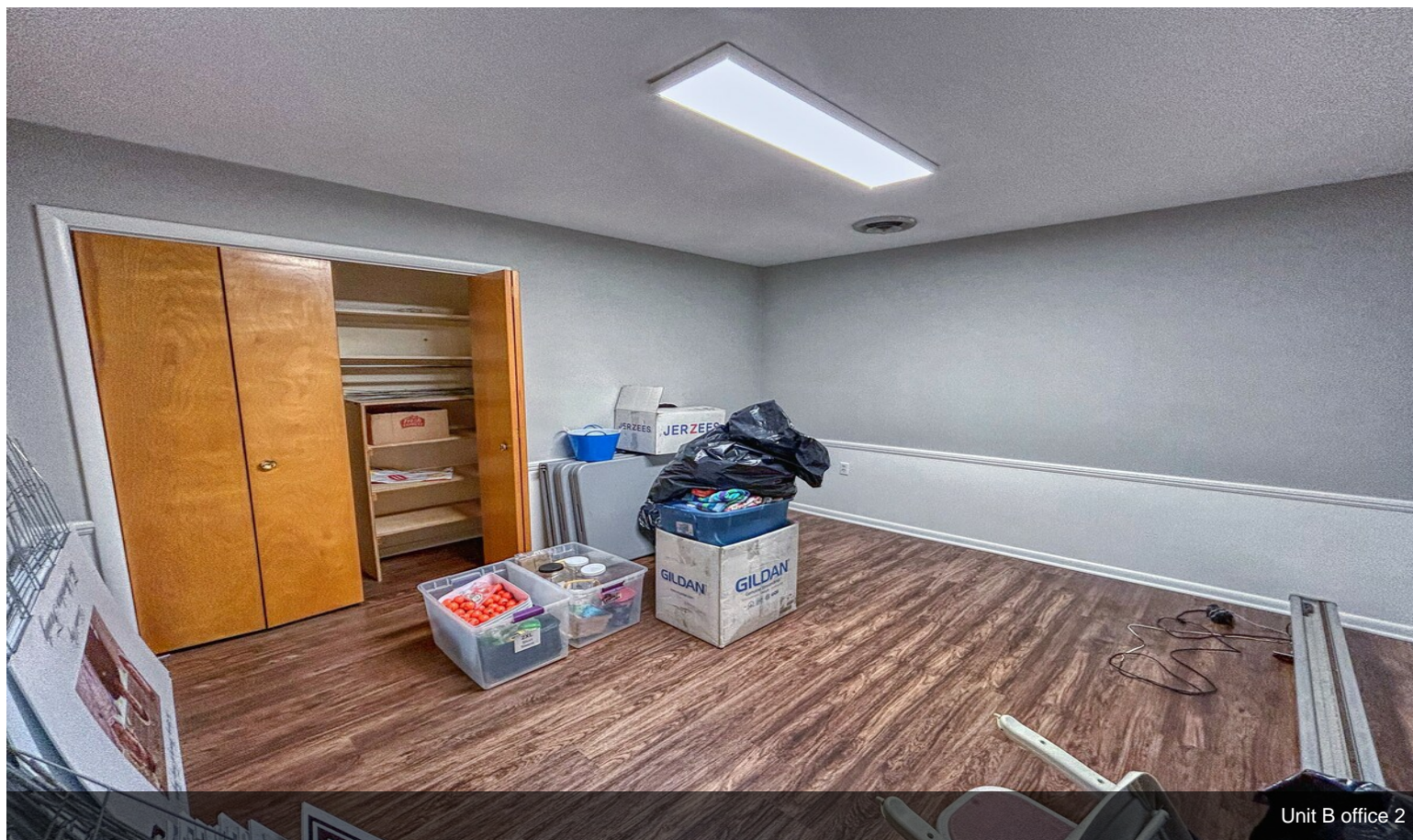


Front building b



Unit B office 1

Property Photos

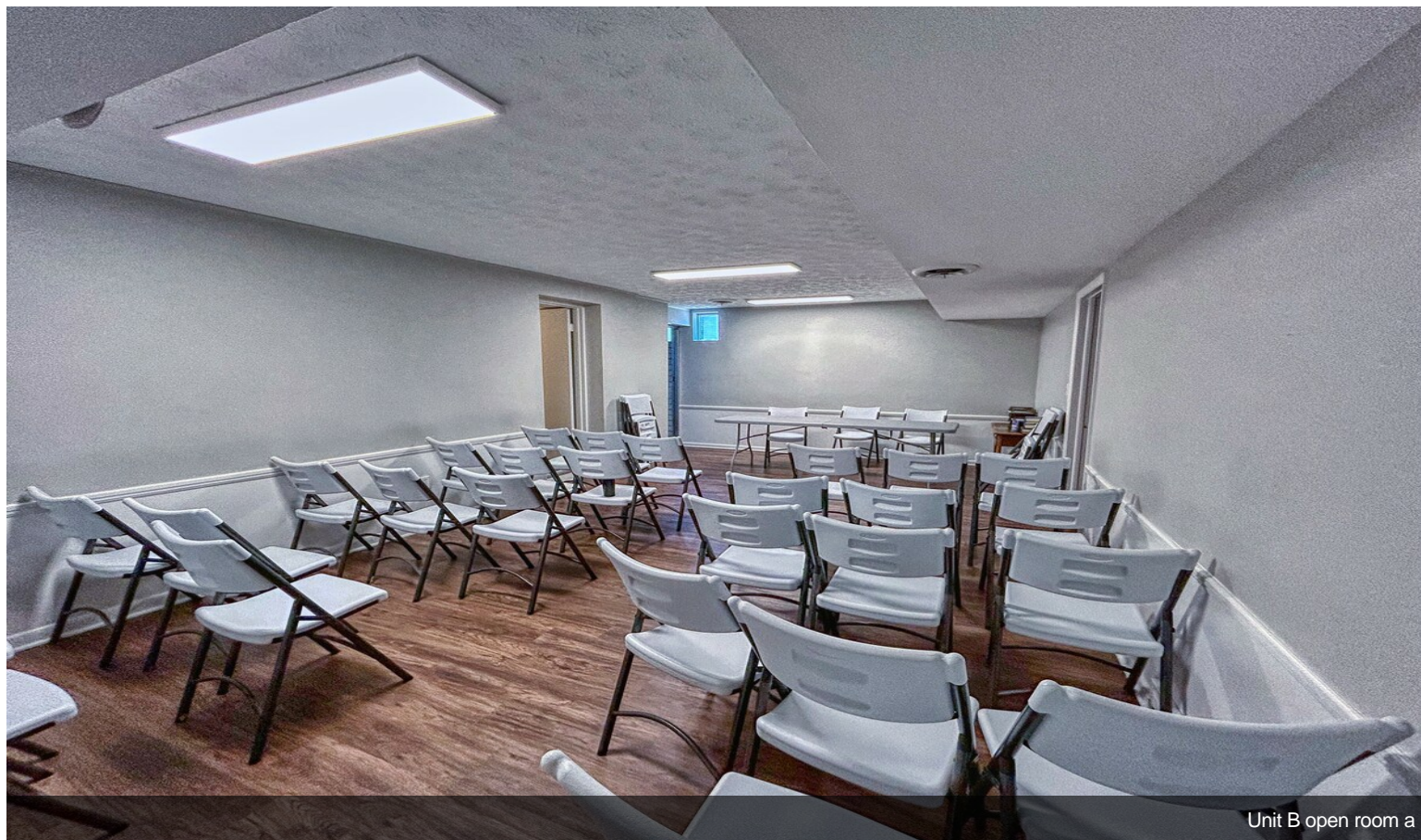


Unit B office 2

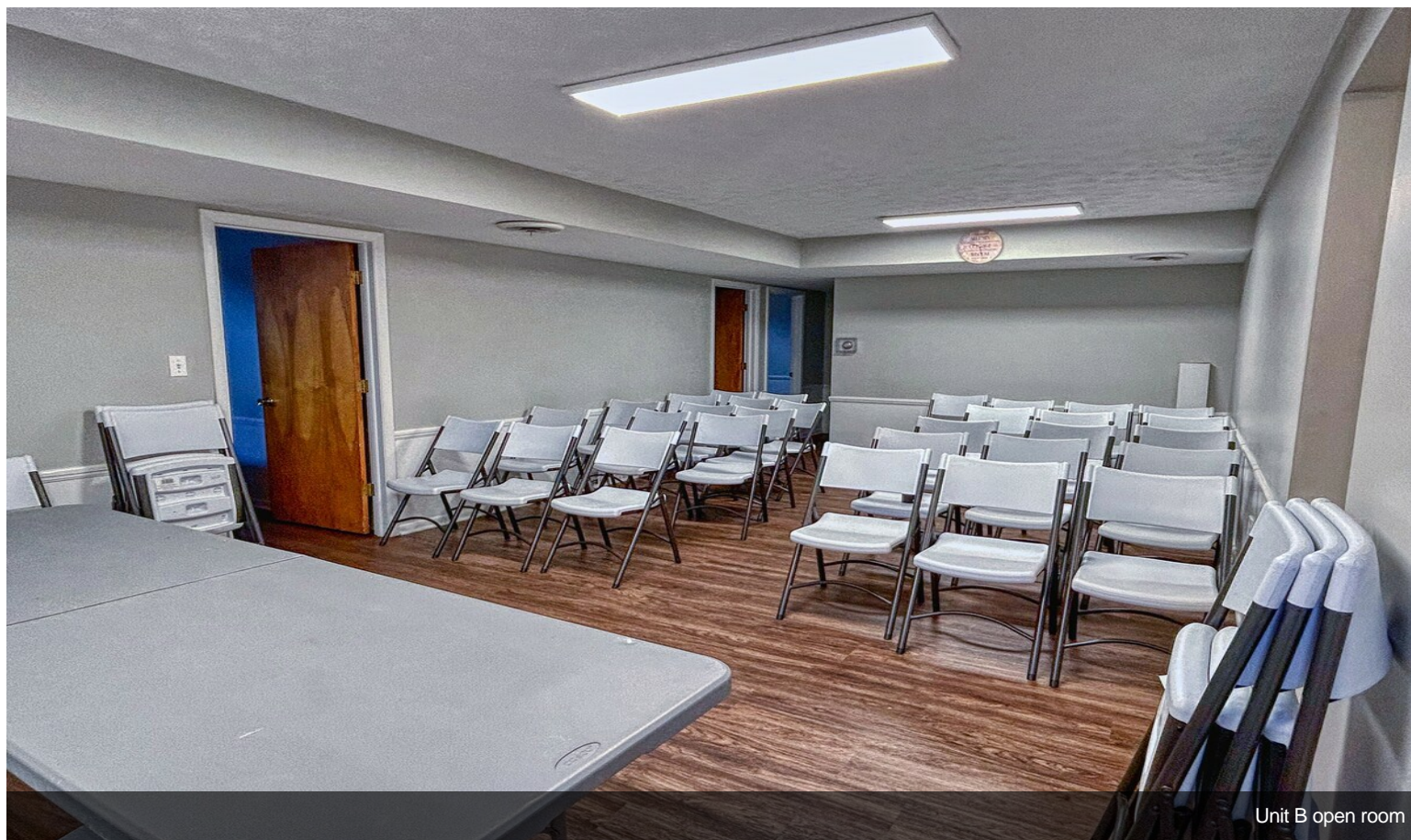


Unit B office 3

Property Photos



Property Photos



Unit B open room



Unit B half bath

Property Photos



Back building b