

FLEX/OFFICE FOR LEASE PATAPSCO BUSINESS CENTER

801 - 809 Barkwood Ct, Linthicum Heights, MD 21090

Available: 1,350 - 7,997 SF



PROPERTY INFORMATION

COUNTY: Anne Arundel
SUBMARKET: BWI North/Linthicum Ind

BUILDING DATA

TOTAL BUILDING SF: 59,261 SF
ZONING: W2

PROPERTY HIGHLIGHTS

- Drive-In and Dock Loading
- Ample Free Parking
- Public Utilities
- Zoned W-2 / Light Industrial Anne Arundel County
- Wet Sprinkler System
- Close Proximity to BWI, I-695 & MD Route 295
- Rooftop HVAC Units, Gas Warehouse Heat

AVAILABLE SPACES

SPACE	TYPE	SIZE (SF)
803 Barkwood Suite A	Flex	3,000 - 6,000 SF
803 Barkwood Suite G	Flex	1,350 SF
805 Barkwood Suite A	Flex	2,667 SF
805 Barkwood Suite G	Flex	2,651 SF
805 Barkwood Suite H	Flex	2,679 SF
805 Barkwood Suite I	Flex	2,667 SF
809 Barkwood Suite A&B	Flex	3,900 SF
809 Barkwood Suite O	Flex	1,950 SF

Kate Jordan, SIOR
Principal
410.336.5314
kjordan@lee-associates.com

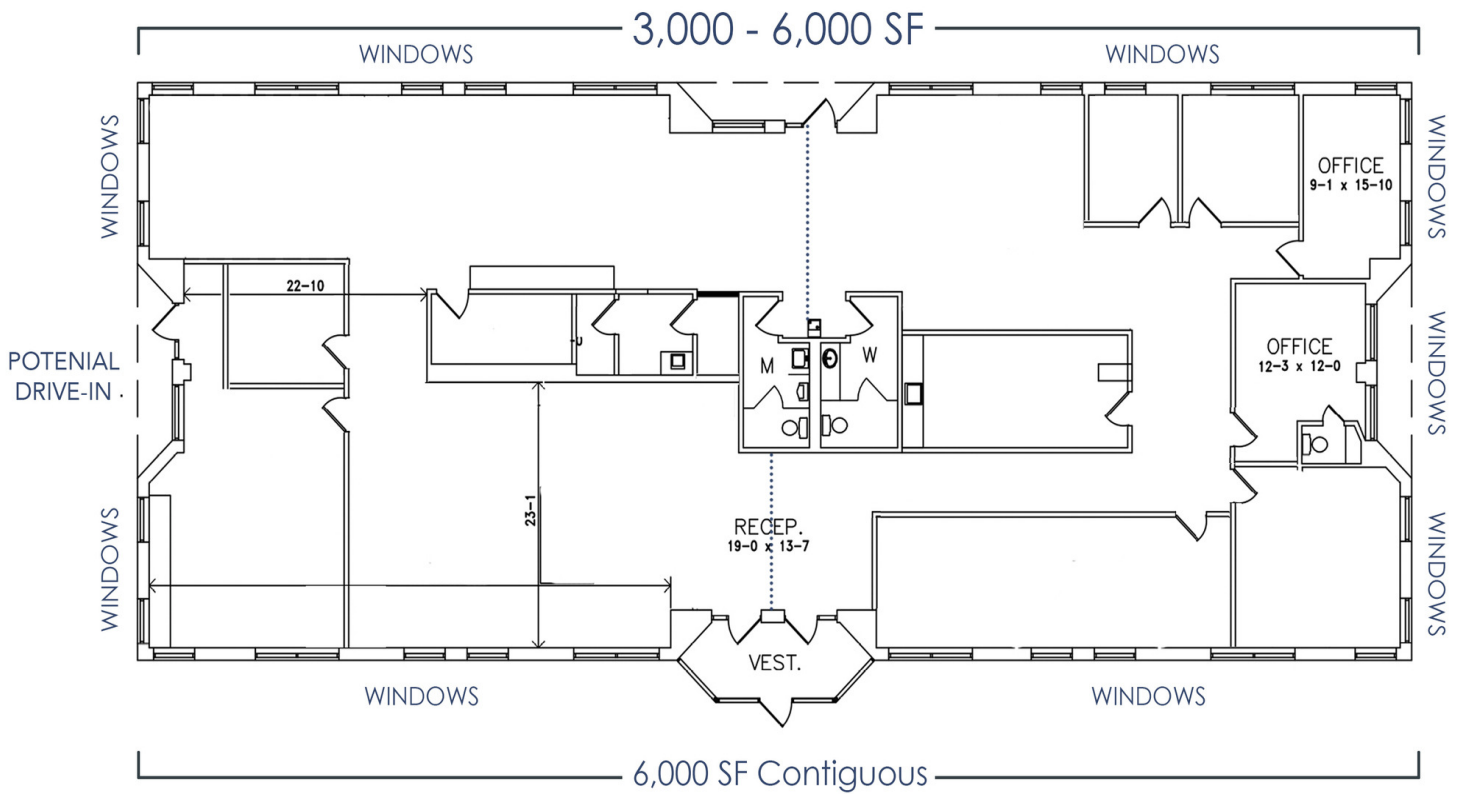
Marley Black, SIOR
Principal
443.741.4050
mblack@lee-associates.com

All information furnished regarding property for sale, rental or financing is from sources deemed reliable, but no warranty or representation is made to the accuracy thereof and same is submitted to errors, omissions, change of price, rental or other conditions prior to sale, lease or financing or withdrawal without notice. No liability of any kind is to be imposed on the broker herein.

FLEX/OFFICE FOR LEASE
PATAPSCO BUSINESS CENTER

801 - 809 Barkwood Ct, Linthicum Heights, MD 21090

Available: 1,350 - 7,997 SF



803 Bay A | 3,000-6,000 SF | 100% Office | Loading Capabilities | Can be divided in half to 3,000 SF

Kate Jordan, SIOR
Principal
410.336.5314
kjordan@lee-associates.com

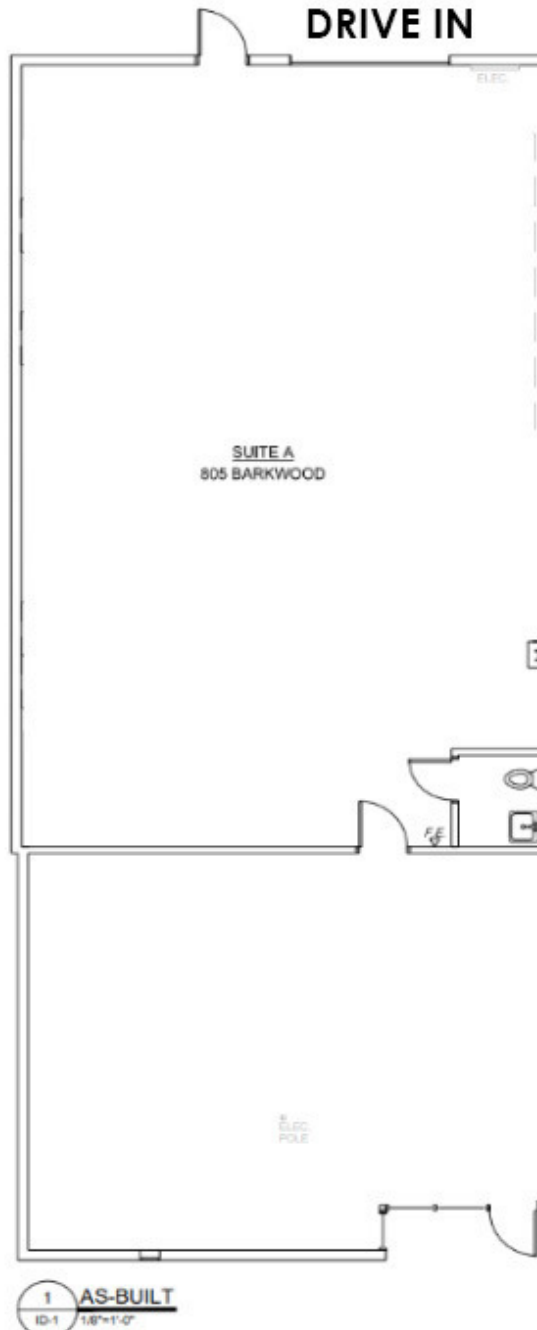
Marley Black, SIOR
Principal
443.741.4050
mblack@lee-associates.com

All information furnished regarding property for sale, rental or financing is from sources deemed reliable, but no warranty or representation is made to the accuracy thereof and same is submitted to errors, omissions, change of price, rental or other conditions prior to sale, lease or financing or withdrawal without notice. No liability of any kind is to be imposed on the broker herein.

FLEX/OFFICE FOR LEASE
PATAPSCO BUSINESS CENTER

801 - 809 Barkwood Ct, Linthicum Heights, MD 21090

Available: 1,350 - 7,997 SF



805 Suite A | 2,667 SF | Flex

Kate Jordan, SIOR
Principal
410.336.5314
kjordan@lee-associates.com

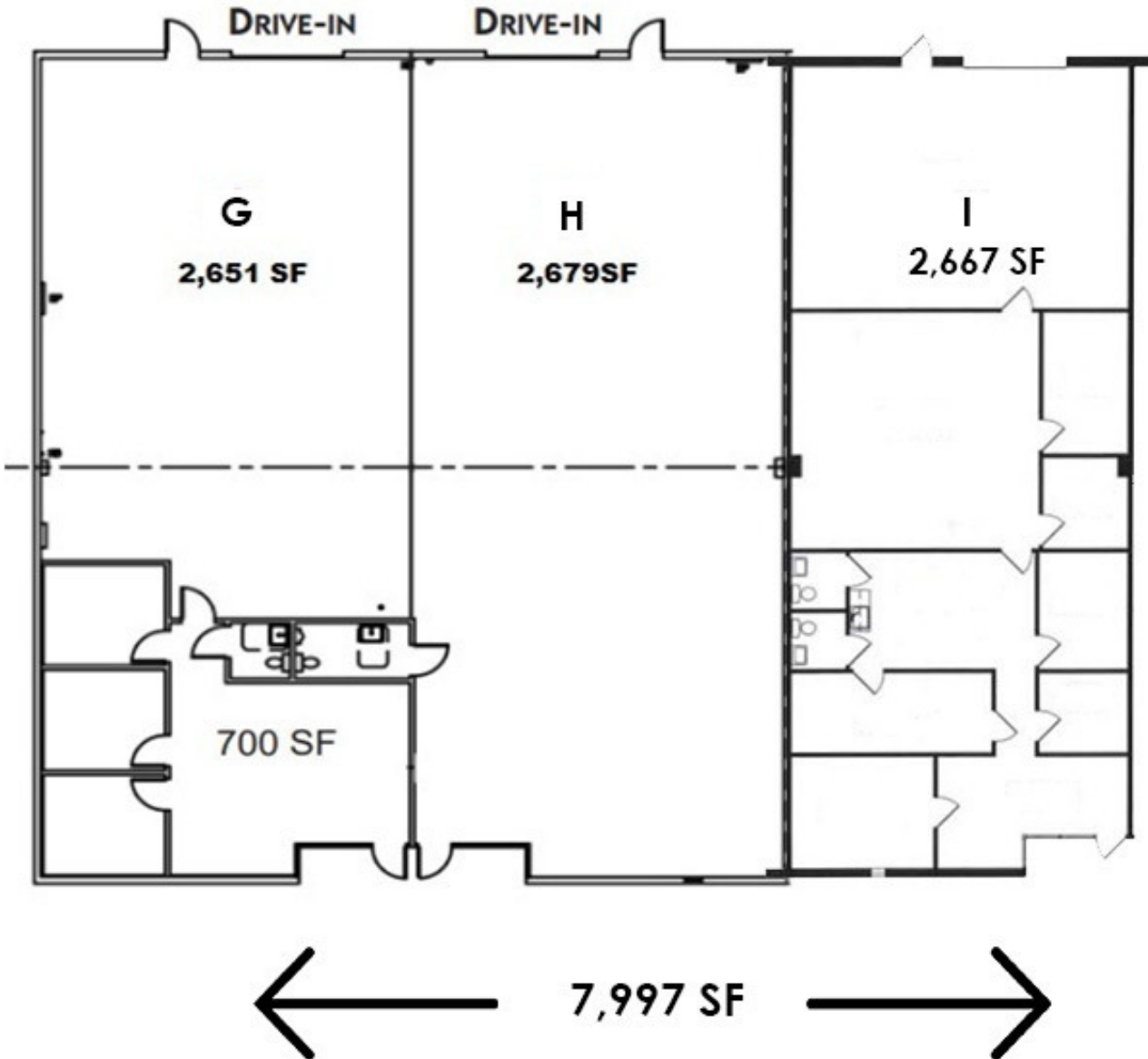
Marley Black, SIOR
Principal
443.741.4050
mblack@lee-associates.com

All information furnished regarding property for sale, rental or financing is from sources deemed reliable, but no warranty or representation is made to the accuracy thereof and same is submitted to errors, omissions, change of price, rental or other conditions prior to sale, lease or financing or withdrawal without notice. No liability of any kind is to be imposed on the broker herein.

FLEX/OFFICE FOR LEASE
PATAPSCO BUSINESS CENTER

801 - 809 Barkwood Ct, Linthicum Heights, MD 21090

Available: 1,350 - 7,997 SF



805 Suite GHI | 2,651 - 7,997 SF | Flex

Kate Jordan, SIOR
Principal
410.336.5314
kjordan@lee-associates.com

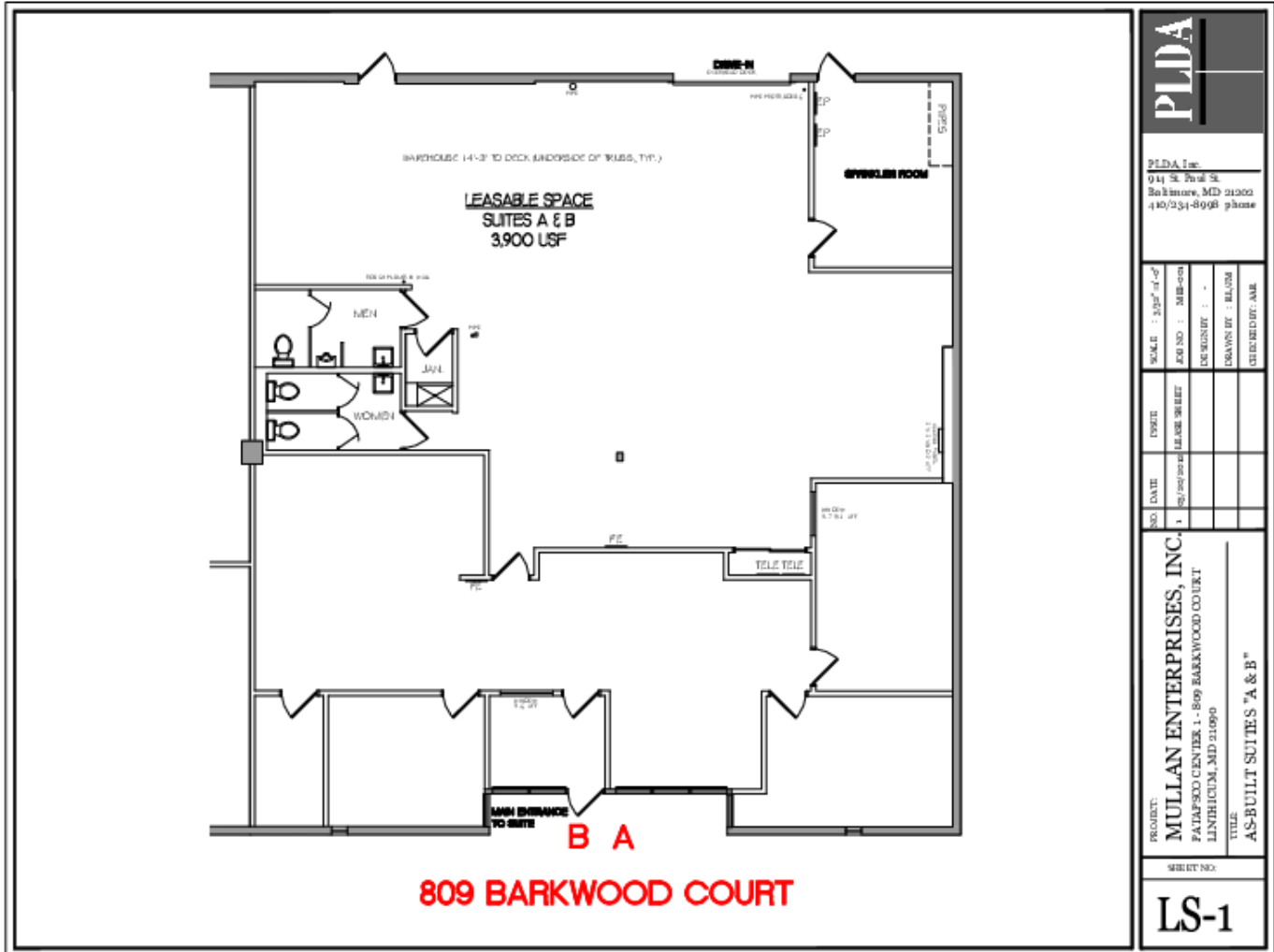
Marley Black, SIOR
Principal
443.741.4050
mblack@lee-associates.com

All information furnished regarding property for sale, rental or financing is from sources deemed reliable, but no warranty or representation is made to the accuracy thereof and same is submitted to errors, omissions, change of price, rental or other conditions prior to sale, lease or financing or withdrawal without notice. No liability of any kind is to be imposed on the broker herein.

FLEX/OFFICE FOR LEASE PATAPSCO BUSINESS CENTER

801 - 809 Barkwood Ct, Linthicum Heights, MD 21090

Available: 1,350 - 7,997 SF



PLDA	
PLDA Inc. 014 S. Paul St. Baltimore, MD 21202 (410)251-8968 phone	
SCALE : 1/8" = 1'-0"	NO. OF PAGES : 1
DATE : 10/20/10	DATE : 10/20/10
PROJECT : MULLAN ENTERPRISES, INC. PATAPSCO CENTER 1 - 809 BARKWOOD COURT LINTHICUM, MD 21090	TITLE : AS-BUILT SUITES "A & B"
SHEET NO. LS-1	

809 Suite A & B | 3,900 SF | Flex

Kate Jordan, SIOR
Principal
410.336.5314
kjordan@lee-associates.com

Marley Black, SIOR
Principal
443.741.4050
mblack@lee-associates.com

All information furnished regarding property for sale, rental or financing is from sources deemed reliable, but no warranty or representation is made to the accuracy thereof and same is submitted to errors, omissions, change of price, rental or other conditions prior to sale, lease or financing or withdrawal without notice. No liability of any kind is to be imposed on the broker herein.