

FOR SALE

2.75± ACRES

Urban Land

25190 Highway 58 | Baskerville, VA 23915



COMMONWEALTH
COMMERCIAL
Comprehensive Property Solutions



PROPERTY HIGHLIGHTS

- › 2.75± AC on the corner of Highway 58 and Route 4
- › Across from the newly constructed Mecklenburg Middle and High School
- › Water and Sewer located across the highway
- › Zoned R2
- › Asking Price: \$499,000

FOR MORE INFORMATION:

BRENT ALTAFFER

Associate
804-793-0055
baltaffer@commonwealthcommercial.com

CARL BLACKWELL

Senior Vice President | Partner
804-363-1291
cblackwell@commonwealthcommercial.com

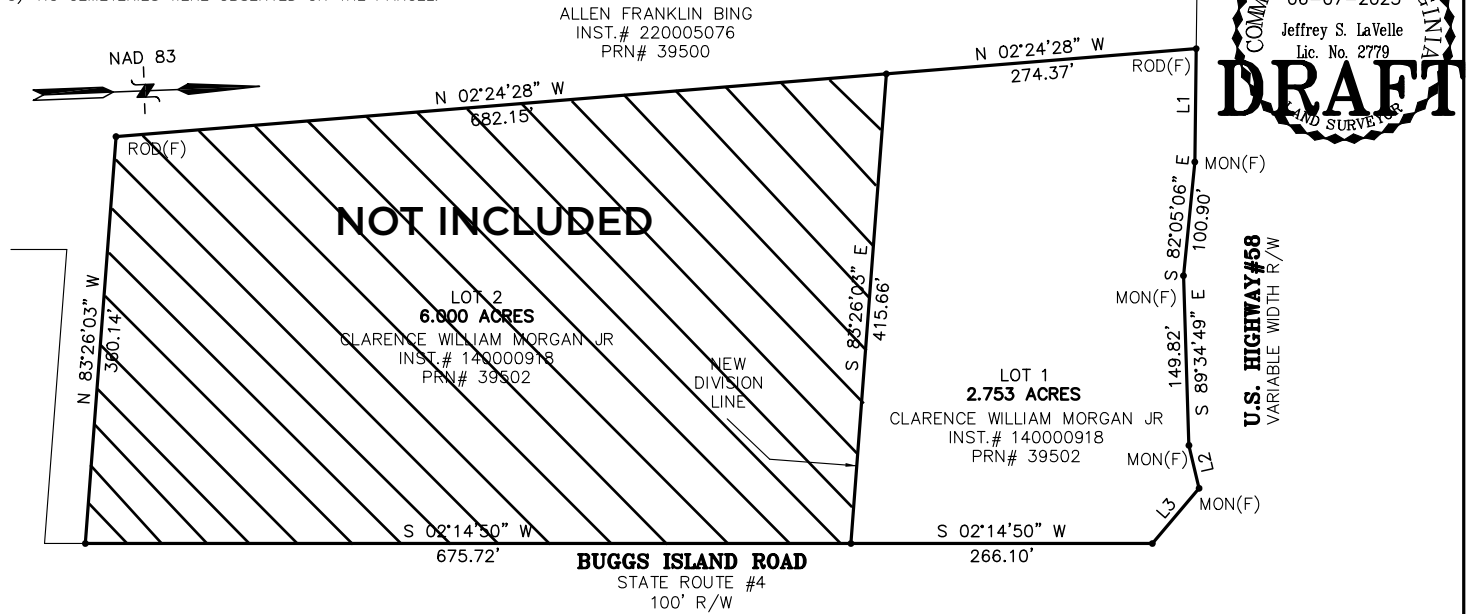
Commonwealth Commercial Partners, LLC represents the Owner of this property. Information contained herein is deemed reliable but is not guaranteed.

SITE PLAT

NOTES:

- 1) THIS PLAT REPRESENTS A CURRENT FIELD SURVEY.
- 2) EASEMENTS MAY EXIST THAT ARE NOT SHOWN.
- 3) NO CEMETERIES WERE OBSERVED ON THE PARCEL.

LINE	BEARING	DISTANCE
L1	S 87°02'35" E	100.00'
L2	N 78°57'10" E	38.90'
L3	S 47°33'52" E	63.82'

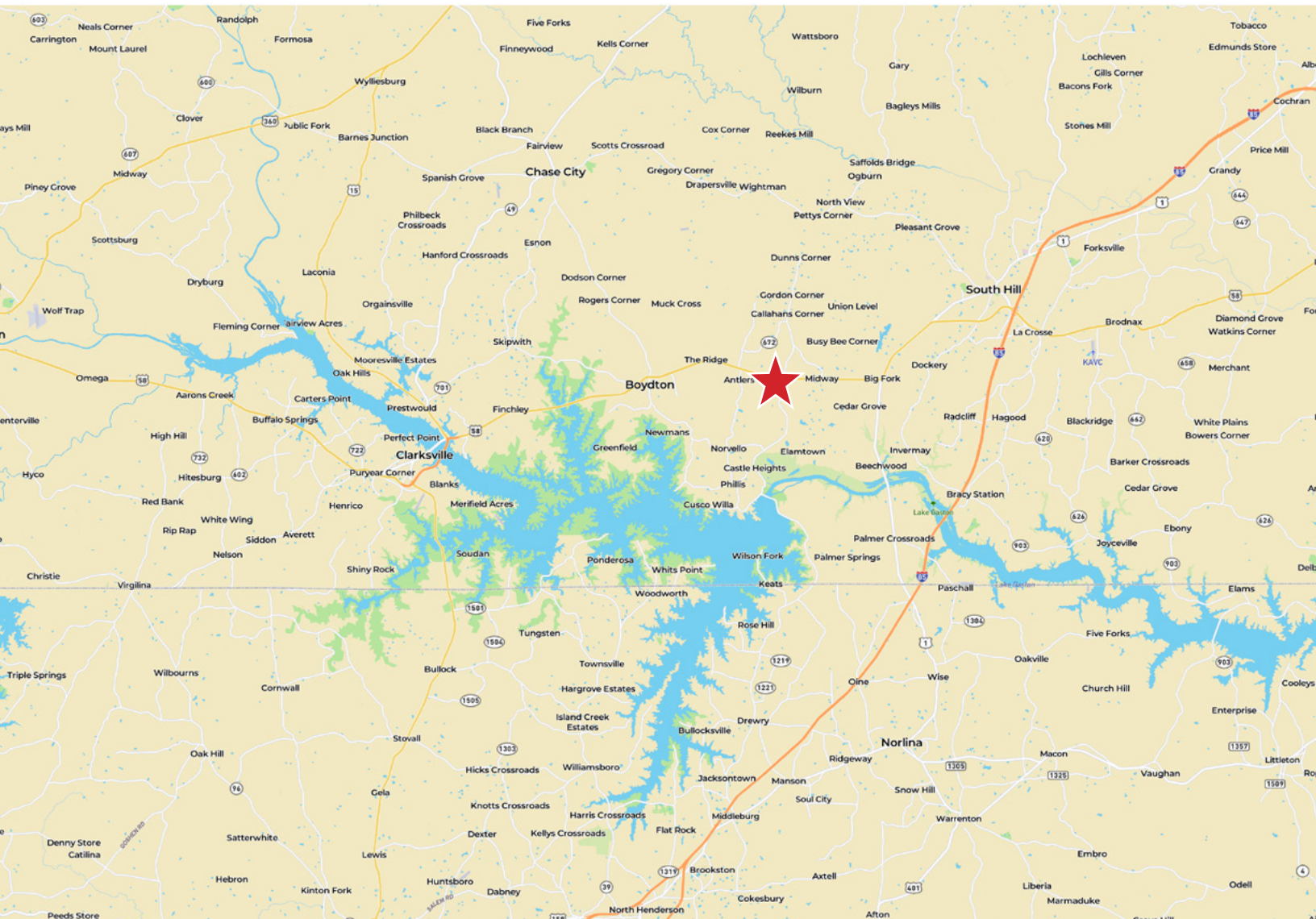


DATE: JUNE 07, 2023 SCALE: 1" = 100'
 CHKD BY: JSL DRAWN BY: HLK
 JOB NO: 23185 FILE: 23185BND

JL SURVEYING, LLC.
 365 DEEP CREEK ROAD
 CREWE, VIRGINIA 23930
 (434) 645-7960 (888) 504-5252 Fax
 jeff@jlsurveyingllc.com

**PLAT SHOWING TWO PARCELS OF LAND
 LYING WEST OF BUGGS ISLAND ROAD
 STATE ROUTE #4**
 BOYDTON DISTRICT * MECKLENBURG COUNTY, VIRGINIA

LOCATION MAP



FOR SALE | 25190 HIGHWAY 58 | BASKERVILLE, VA 23915