

Specifications

±4,500 SF
BUILDING SIZE

1
LOADING DOCKS

1 Full Private
BATHROOMS

5 Parking Spaces
PARKING

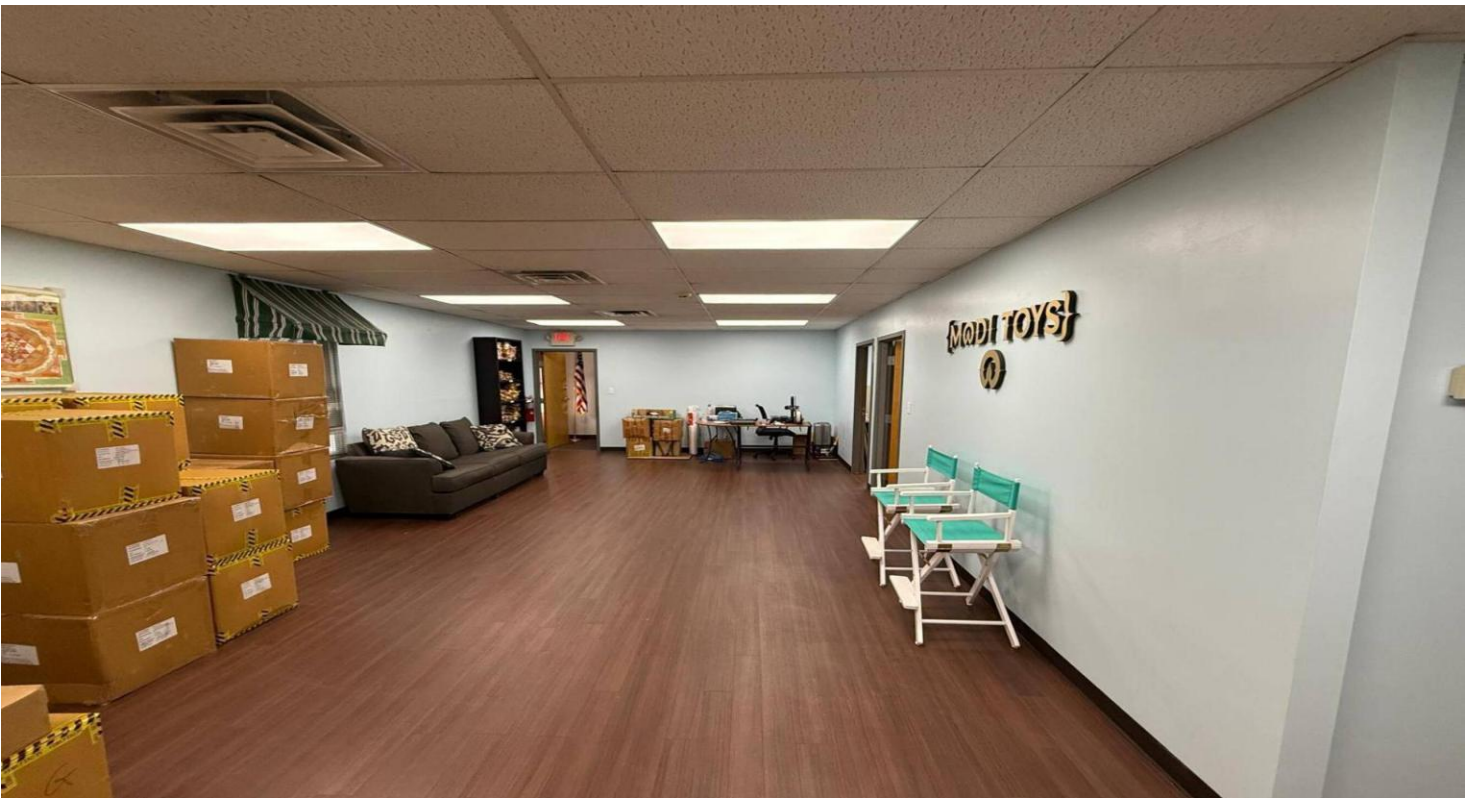
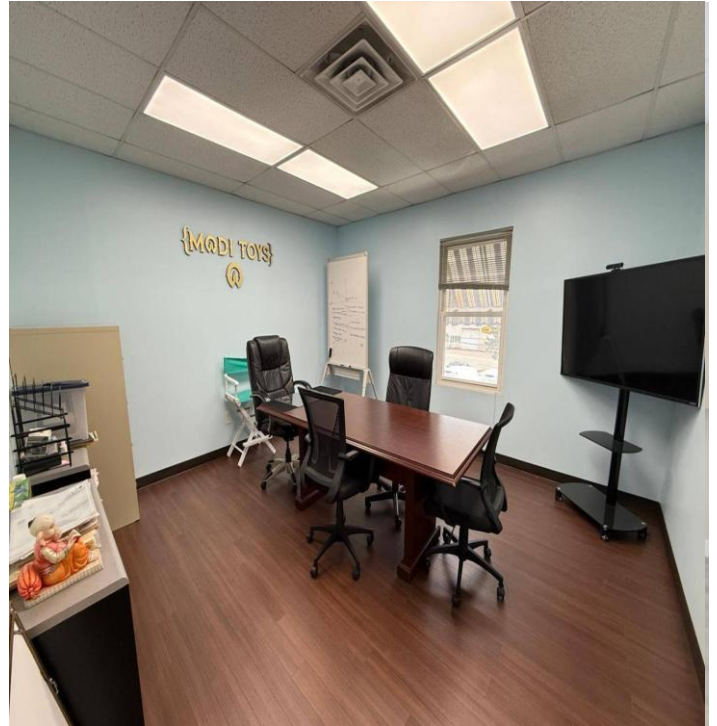
±0.13 AC (Block 730, Lot 31.01)
LOT SIZE

\$10,649.92
TAXES (2025)

Prime Edison Location
Includes Full Basement, Garage and Driveway for Storage
Close Proximity to Edison Train Station, I-287, Route 1, Garden State Parkway and NJ Turnpike
COMMENTS

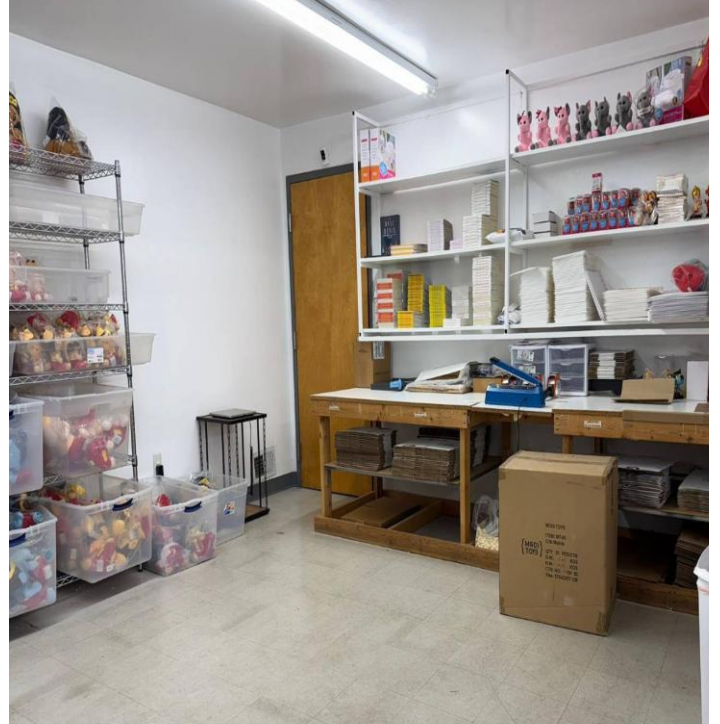
For additional property information or to arrange a viewing,
please contact the exclusive broker:

Alex Dombrowski
Associate
973.379.6644 x 229
ADombrowski@blauberg.com



For additional property information or to arrange a viewing,
please contact the exclusive broker:

Alex Dombrowski
Associate
973.379.6644 x 229
ADombrowski@blauberg.com



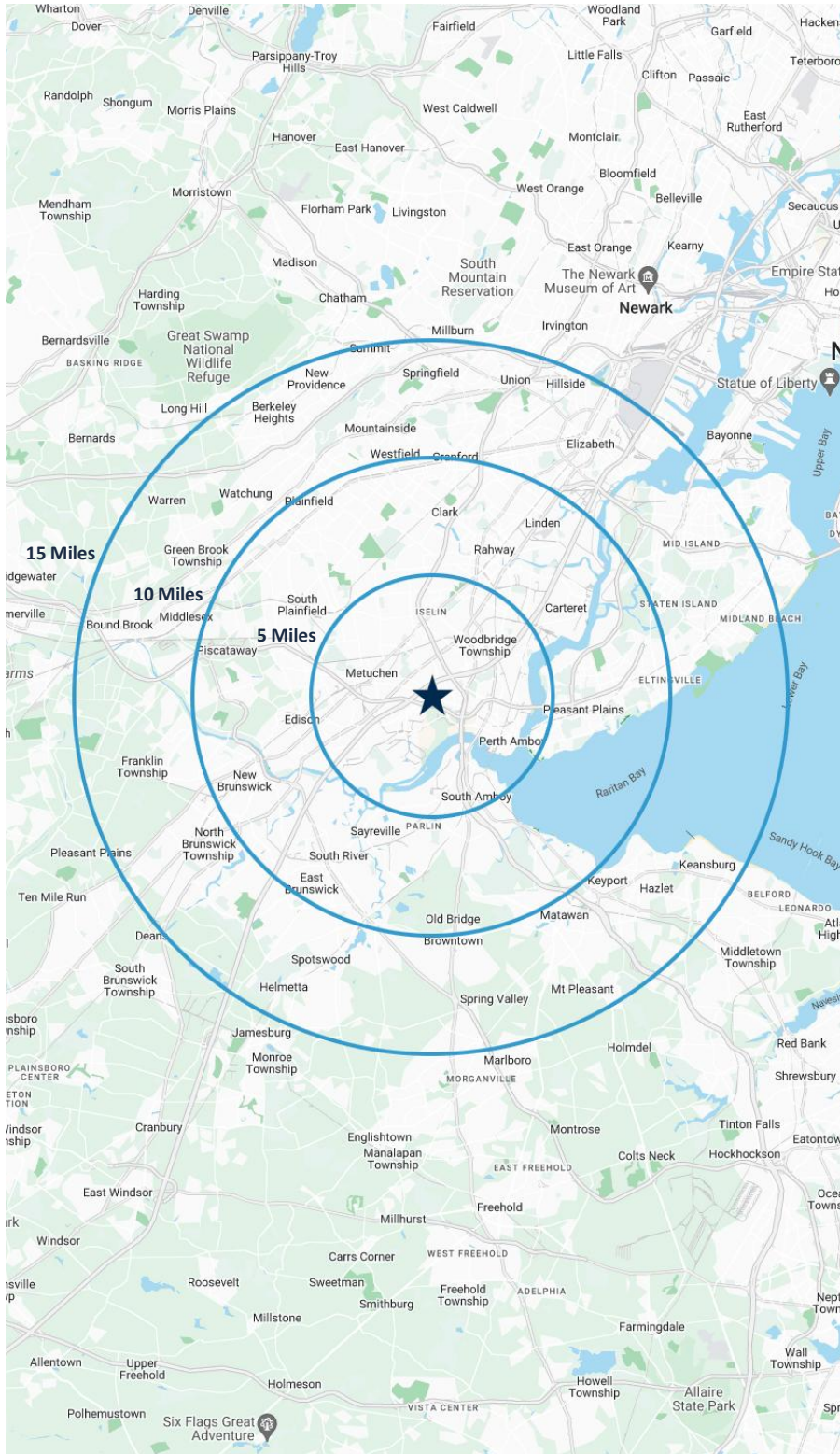
For additional property information or to arrange a viewing,
please contact the exclusive broker:

Alex Dombrowski
Associate
973.379.6644 x 229
ADombrowski@blauberg.com



For additional property information or to arrange a viewing,
please contact the exclusive broker:

Alex Dombrowski
Associate
973.379.6644 x 229
ADombrowski@blauberg.com



5 MILES

- Total Population: 330,935
- Households: 115,735
- Median Household Income: \$120,665
- Average Household Size: 2.8
- Transportation to Work: 171,080
- Labor Force: 267,138

10 MILES

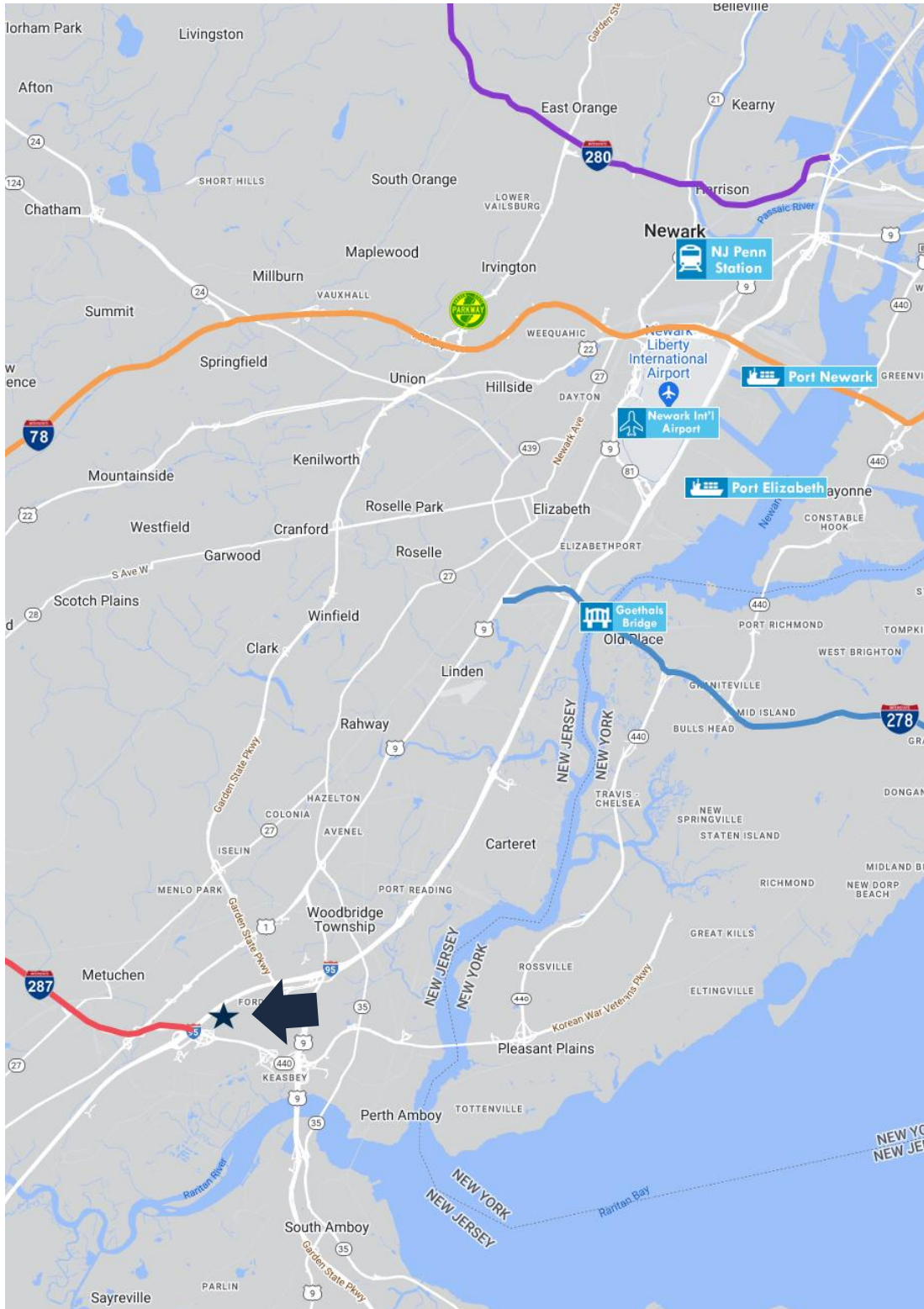
- Total Population: 1.25M
- Households: 438,727
- Median Household Income: \$120,810
- Average Household Size: 2.8
- Transportation to Work: 650,438
- Labor Force: 1.01M

15 MILES







- Total Population: 2.48M
- Households: 874,884
- Median Household Income: \$121,170
- Average Household Size: 2.8
- Transportation to Work: 1.27M
- Labor Force: 2.01M

For additional property information or to arrange a viewing,
please contact the exclusive broker:

Alex Dombrowski
Associate
973.379.6644 x 229
ADombrowski@blauberg.com



ACCESSIBILITY

	0.7 MI I-287
	0.7 MI Route 440
	1.2 MI I-95
	1.9 MI Route 1 & 9
	2.0 MI GSP
	14.4 MI Goethals Bridge

For additional property information or to arrange a viewing,
please contact the exclusive broker:

Alex Dombrowski
Associate
973.379.6644 x 229
ADombrowski@blauberg.com