

9304-9324 US 19 N, Port Richey, FL 34668

TEMPO PLAZA

3,296 SF  
AVAILABLE

3,661 SF  
AVAILABLE

SMOKE & VAPE

MARIJUANA  
DOCTOR

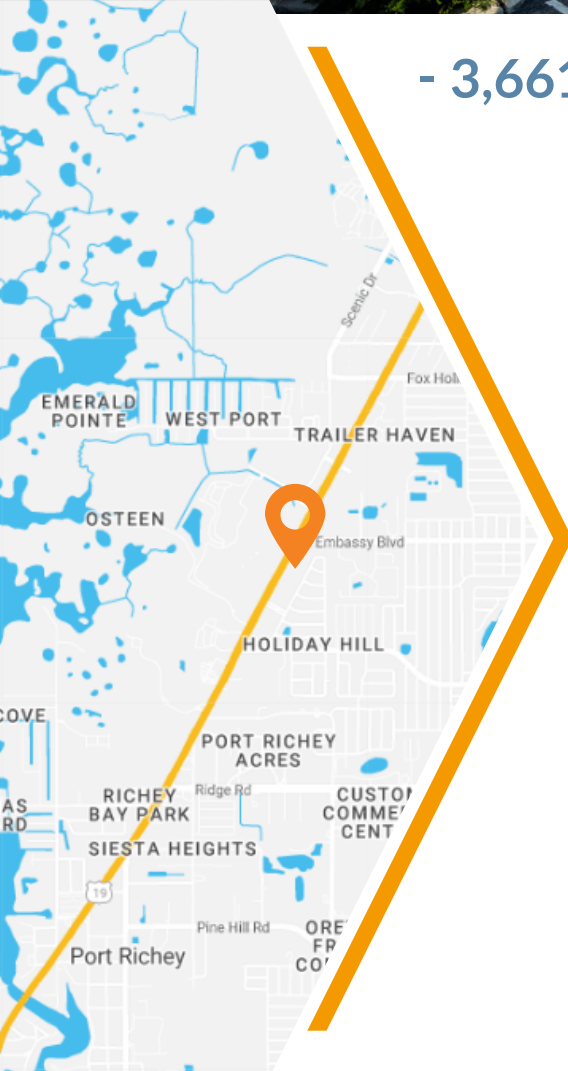
Gentle Dental

Photo property of CoStar



## - 3,661 SF 2ND-GEN RESTAURANT FOR LEASE - WITH DIRECT VISIBILITY TO US 19

- » 3,296 SF end-cap also available
- » Located on US Hwy 19 across from Glades at Gulf View, with 312 luxury apartments
- » Phenomenal visibility with 255 feet of direct frontage on US 19
- » Excellent pylon signage
- » Ample parking with 73 spaces
- » High-traffic area with 52,000 AADT on US 19 N



Demographics	1-mile	3-mile	5-mile
2024 Population	12,463	67,887	137,096
Daytime Employment	5,700	24,097	45,621
Average HH Income	\$50,514	\$53,901	\$61,239
Median Age	40.2	44.2	48.5

**Leasing Contact:** Wanda De Boer | Managing Director - Retail Services  
(Cell) 813-690-3020 | (Office) 813-269-0702 | [wdeboer@rpm-realty.com](mailto:wdeboer@rpm-realty.com)





# TEMPO PLAZA

9304-9324 US 19 N, Port Richey, FL 34668

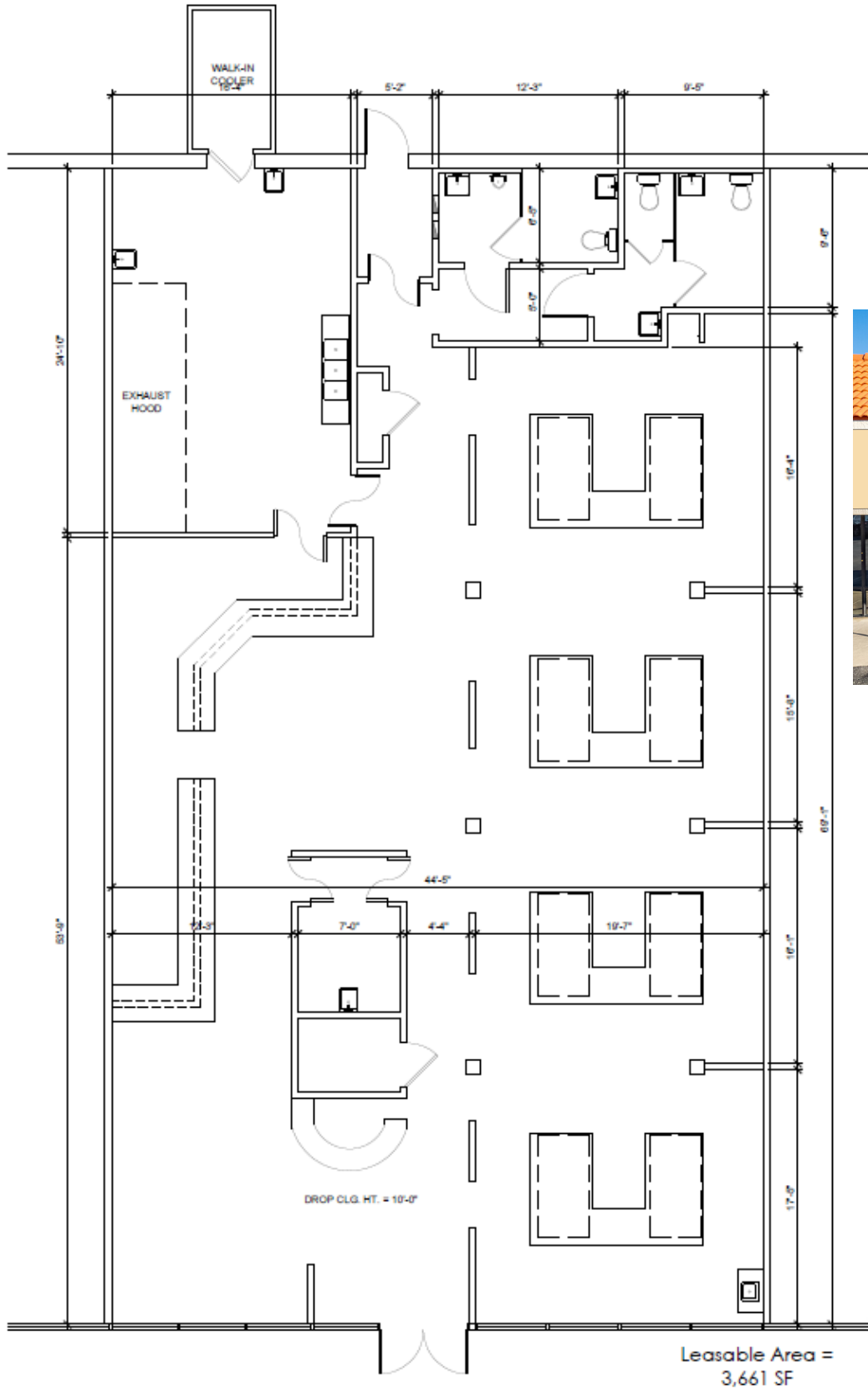


The information contained herein was obtained from sources believed reliable; however, RPM Realty Management, LLC makes no guarantees, warranties, or representations as to the completeness or accuracy thereof. The presentation of this property is submitted subject to errors, omissions, change of price or conditions prior to sale or lease, or withdrawal without notice.



# TEMPO PLAZA

9304-9324 US 19 N, Port Richey, FL 34668



The information contained herein was obtained from sources believed reliable; however, RPM Realty Management, LLC makes no guarantees, warranties, or representations as to the completeness or accuracy thereof. The presentation of this property is submitted subject to errors, omissions, change of price or conditions prior to sale or lease, or withdrawal without notice.

