

FOR LEASE

FOLSOM | CALIFORNIA

110 Blue Ravine Road

±4,633 SF Available

NEWMARK

TODD ESCHELMAN

Executive Managing Director
916.569.2347
todd.eschelman@nmrk.com
CA RE License #01051148

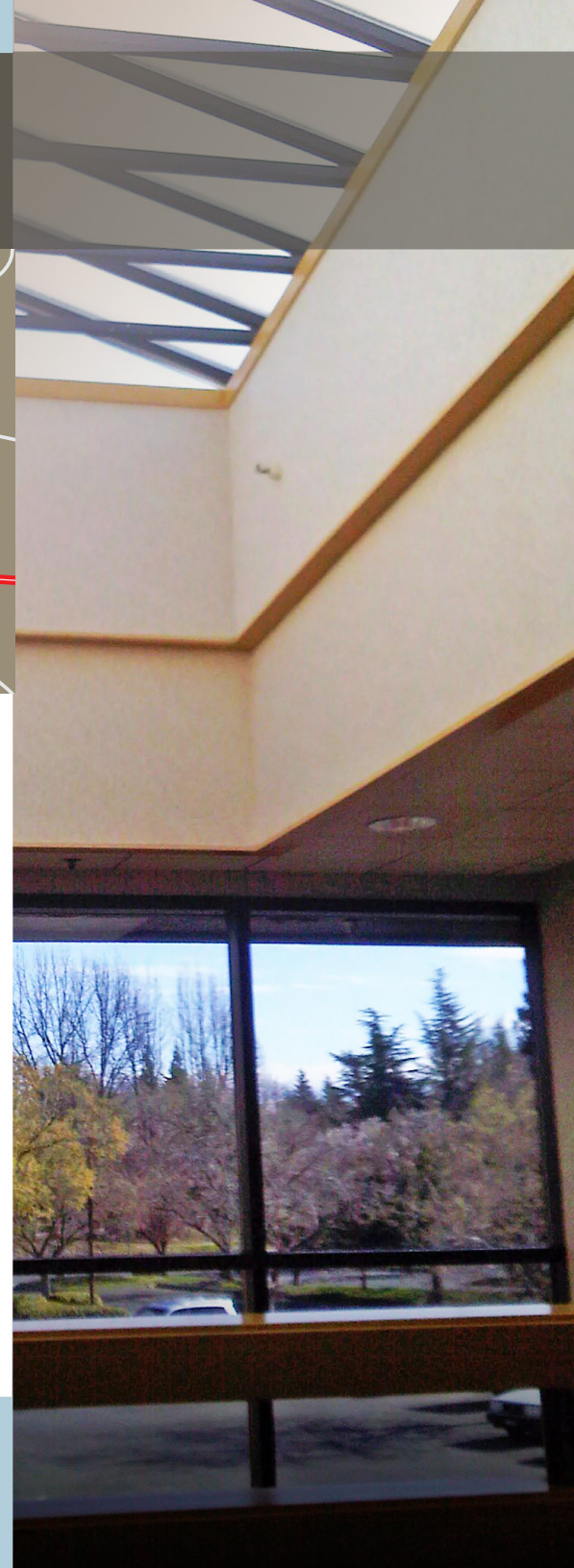
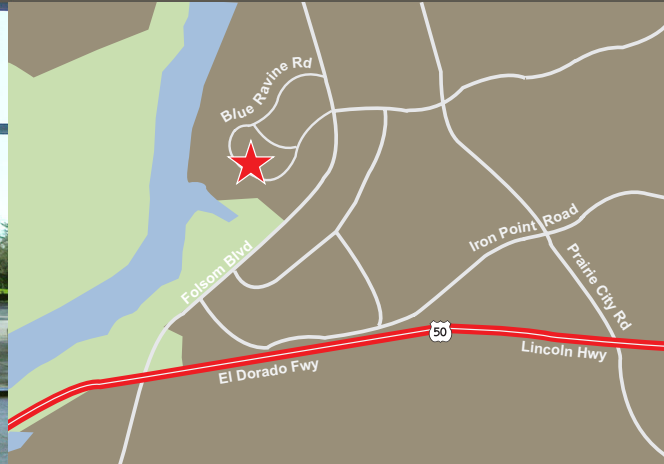
JACK BLACKMON

Director
916.569.2372
jack.blackmon@nmrk.com
CA RE License #01999561

980 Ninth Street, Suite 2500
Sacramento, CA 95814
T 916.920.4400 F 916.920.0854

110 Blue Ravine Road

Folsom | CA



Project Highlights

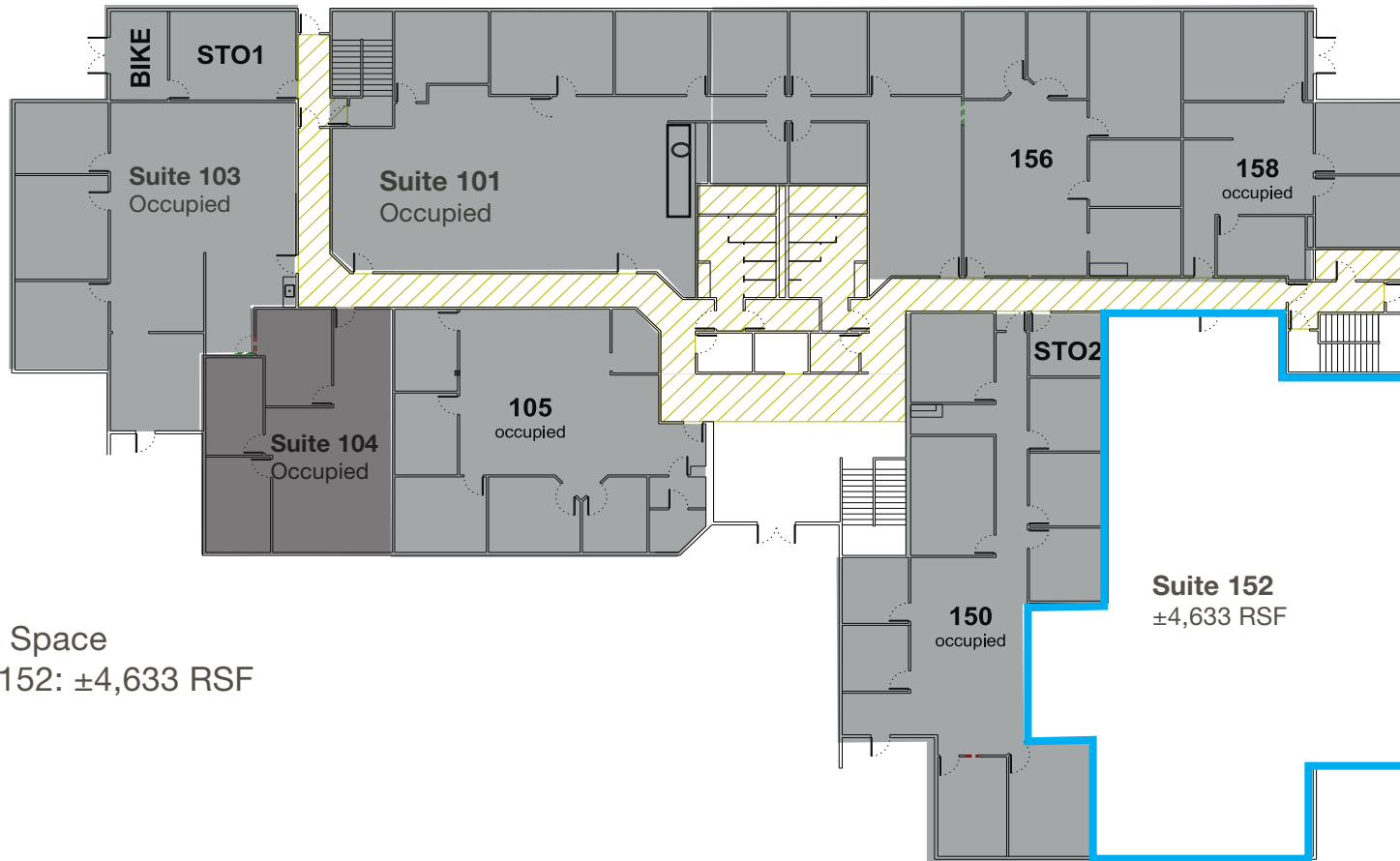
- Total space available $\pm 4,633$ SF
- Beautiful views with natural landscaping around Lake Natoma
- Prominent two story atrium lobby with skylight
- On site showers and lockers
- Outstanding location, just blocks off the intersection of Blue Ravine Road and Folsom Boulevard, a major intersection featuring extensive retail services and restaurants including Wells Fargo Bank, Jamba Juice, Dos Coyotes Mexican Grill, La Bou, Starbucks, Subway and Mels Diner
- Close proximity to Sacramento light rail with two nearby stops on Folsom Boulevard
- Immediate access to the American River Parkway bike/walking trail

NEWMARK

TODD ESCHELMAN
Executive Managing Director
916.569.2347
todd.eschelman@nrmk.com
CA RE License #01051148

JACK BLACKMON
Director
916.569.2372
jack.blackmon@nrmk.com
CA RE License #01999561

Floorplan | First Floor



Available Space

- Suite 152: ±4,633 RSF

FOLSOM | CALIFORNIA

110 Blue Ravine Road



110 Blue Ravine Road

NEWMARK

TODD ESCHELMAN
Executive Managing Director
916.569.2347
todd.eschelman@nrmk.com
CA RE License #01051148

JACK BLACKMON
Director
916.569.2372
jack.blackmon@nrmk.com
CA RE License #01999561

12-0463 - 09/24
980 Ninth Street, Suite 2500
Sacramento, CA 95814
T 916.920.4400 F 916.920.0854
www.nrmk.com