

For Lease
Medical/Office Suite
1,105± SF | \$13.00/SF NNN

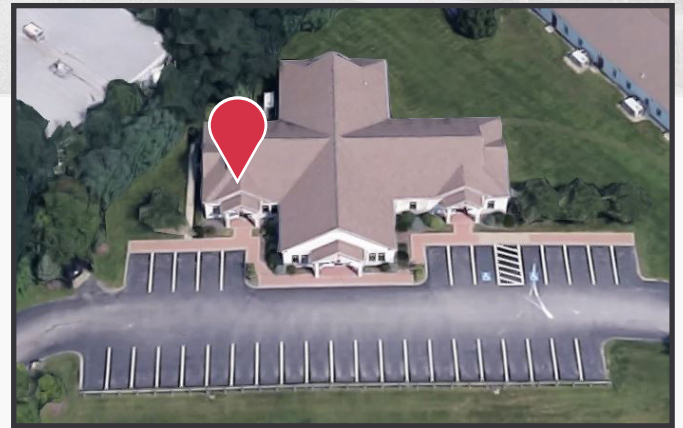


200 Professional Drive

Scarborough, Maine

Property Highlights

- Professionally managed complex
- Ample on-site parking
- Excellent signage potential
- Full dry basement included



Property Description

We are pleased to offer this 1,105± SF Class A medical/office suite for lease at 200 Professional Drive, Scarborough. This ground level suite is in excellent condition and offers an abundance of natural light. Located just off U.S. Route 1 near Maine Medical Center's Scarborough Campus.

Broker Contact

Tom Moulton, CCIM, SIOR

Katie Allen, Esq.

tmoulton@dunhamgroup.com

katie@dunhamgroup.com

Property Overview

Available Space	1,105± SF
Assessor's Reference	Map U45, Lot 13B
Zoning	Town and Village Center (TVC)
Building Construction	Wood framed
No. of Stories	One (1)
Roof	Pitched roof with architectural shingles
Floors	VCT tile and carpet
Electrical	Separately metered 200 Amp, 3-phase
HVAC	Natural gas fired - lot air distributor
Utilities	Municipal water and sewer, natural gas
Parking	Ample on-site, paved
Accessibility	Located 1/10± mile from the I-295 Scarborough connector

FOR LEASE : \$13.00/SF NNN
Estimated NNN Expenses : \$7.00/SF

