

# PARK PLACE AT HEATHROW MIXED-USE DEVELOPMENT

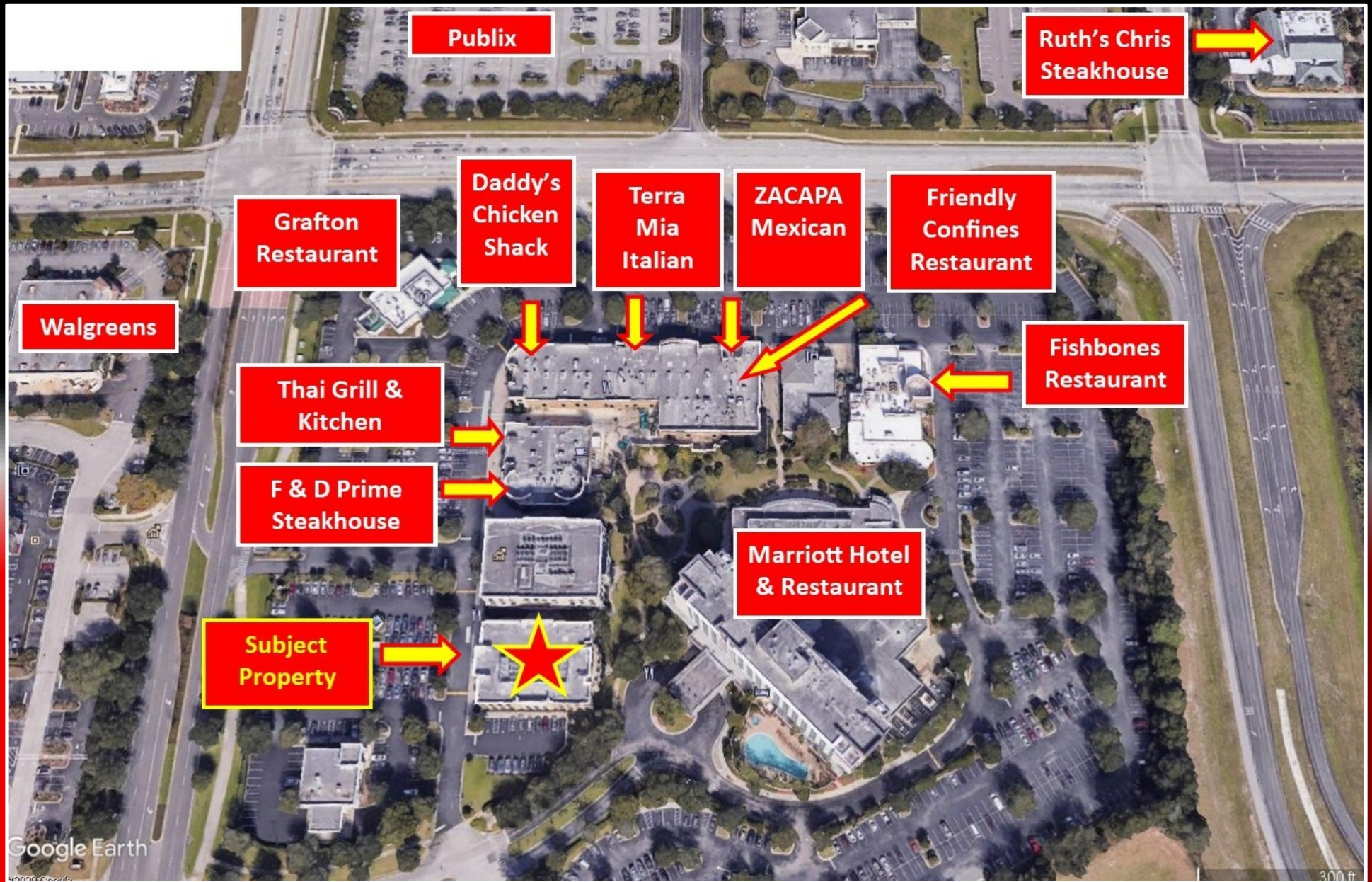
FOR LEASE CLASS A OFFICE 1,776 SF  
1515 INTERNATIONAL PARKWAY, STE 2025, LAKE MARY, FL 32746



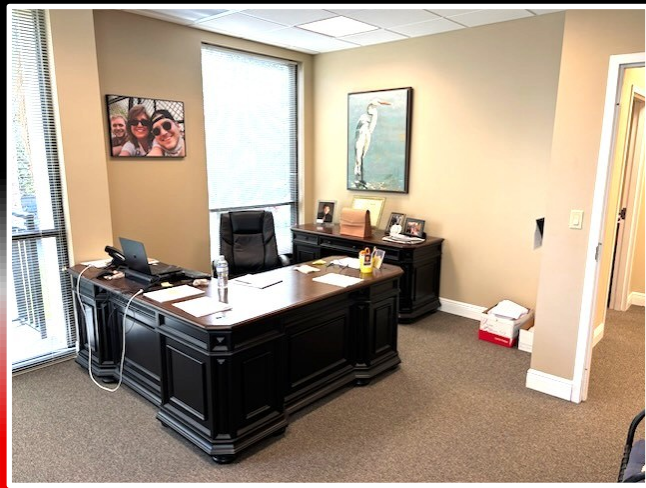
- Walking distance to restaurants, retail, hotels, and other amenities.
- Elegant Main Lobby with Marble Floors.
- International Parkway Address.
- Ample Parking.



# PARK PLACE AT HEATHROW MIXED-USE DEVELOPMENT

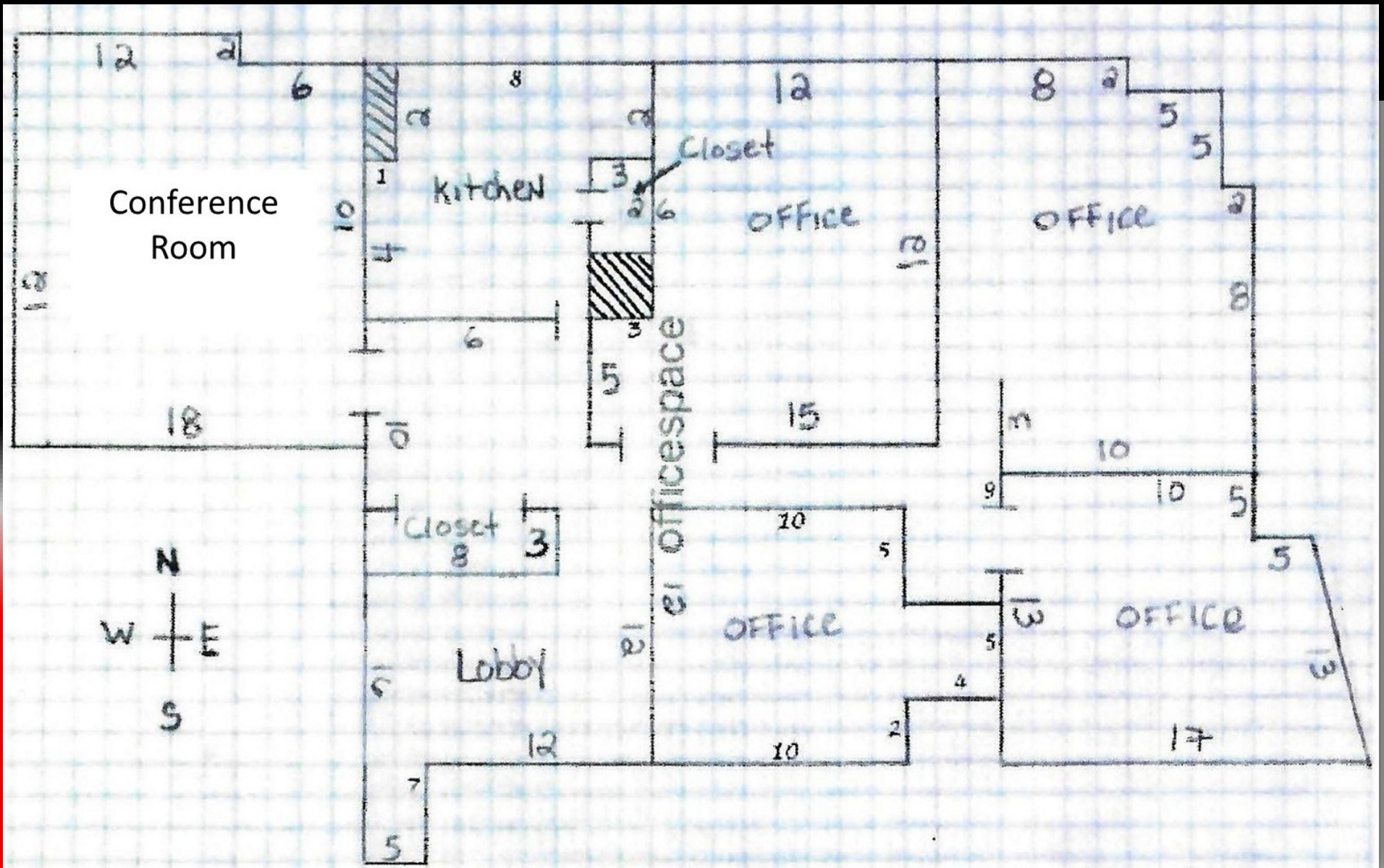








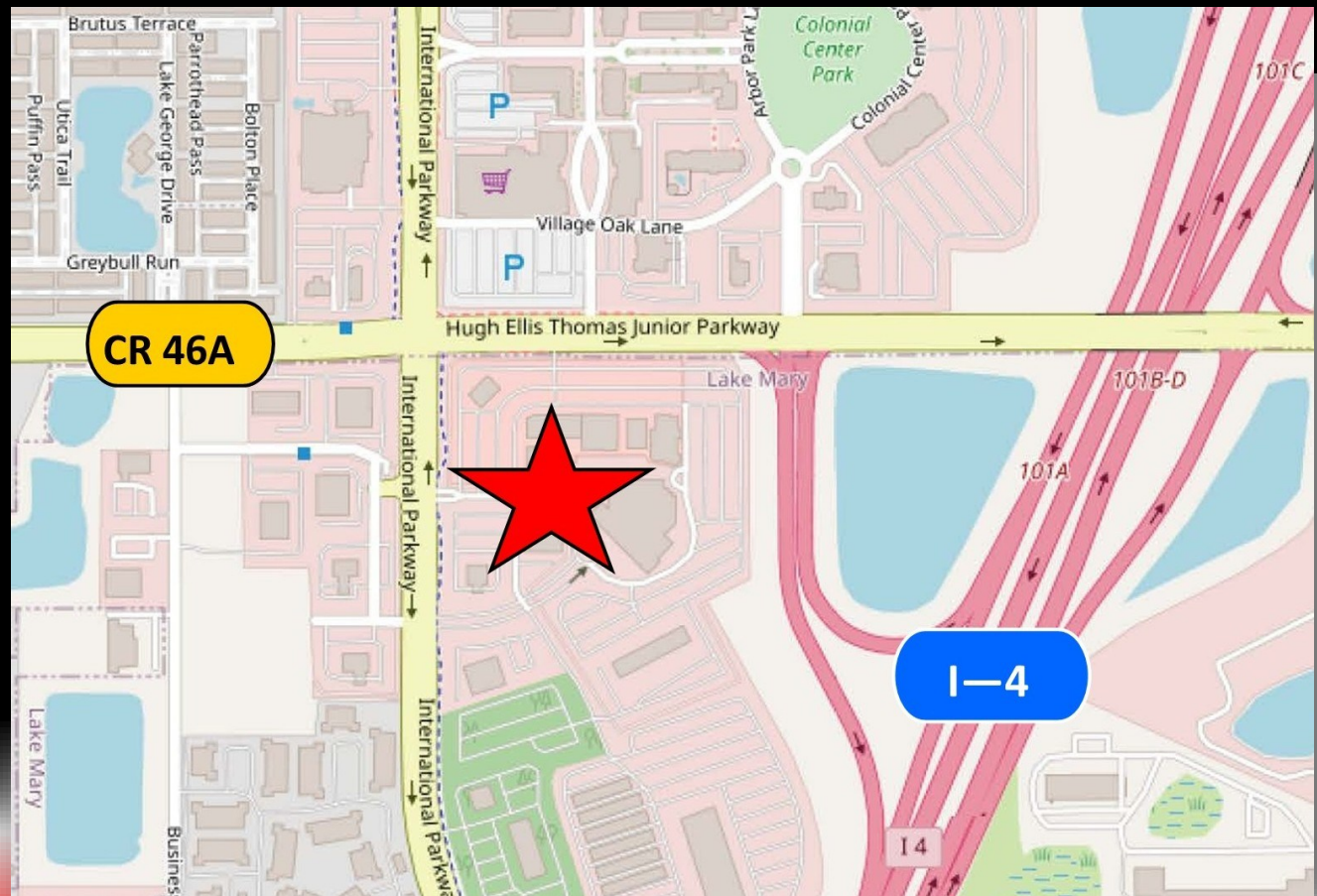
# Floor Plan



**Lease Rate:**

**\$26 PSF Modified  
Gross**

**1,776 SF**



**Easy Access from I-4 and 417 and 429.  
1/4 mile from I-4 exit ramp**



**David Lundberg**  
(407) 701-4400  
[dlundberg@cepadvisors.com](mailto:dlundberg@cepadvisors.com)



**Greg Kainz**  
(407) 310-2718  
[gkainz@cepadvisors.com](mailto:gkainz@cepadvisors.com)



**LEGAL DISCLAIMER:**

INFORMATION GIVEN HERewith IS OBTAINED FROM SOURCES CONSIDERED RELIABLE; HOWEVER, WE ARE NOT RESPONSIBLE FOR MISSTATEMENT OF FACTS, ERRORS, OMISSIONS, PRIOR SALE, AND WITHDRAWAL FROM MARKET, CHANGE IN PRICE OR AVAILABILITY WITHOUT NOTICE. THE INFORMATION SUPPLIED HEREIN IS FOR INFORMATION PURPOSES ONLY AND SHALL NOT CONSTITUTE A WARRANTY OR ASSURANCE THAT SAID INFORMATION IS CORRECT. ANY PERSON INTENDING TO RELY UPON THE INFORMATION SUPPLIED HEREIN SHOULD VERIFY SAID INFORMATION INDEPENDENTLY.