

For Lease

**CBRE**

# Office Space & Ground Floor Retail

**Immediate Availability**  
Short-term opportunities available

251 Laurier Avenue West  
Ottawa, Ontario



# Convenient & Accessible

Centrally located in Downtown Ottawa, 251 Laurier Avenue West offers a great opportunity for a variety of office and retail users. The location provides easy access to numerous amenities, public transit including the Parliament LRT Station located only 300 metres North. Signage opportunity for the ground floor office/retail space. Underground parking is available through INDIGO at 193 Laurier Avenue West, half a block from the building that the Landlord can help secure on behalf of the tenant. [View Parking Map Here](#)

## Property Details

SUITE	SIZE (SF)	NET RENT (PSF)	ADDITIONAL RENT (PSF/EST.2026)	SUITE COMMENTS
Retail				
103	904	\$25.00	\$22.88	Laurier facing ground floor unit with great signage opportunity.
Office				
600	5,535	\$17.00	\$22.88	Full Floor open concept with perimeter offices and meeting spaces. Kitchen area and shower facilities within unit. Available immediately.
900	5,517	\$17.00	\$22.88	NEW MODEL SUITE! Fully furnished and recently improved model suite with kitchenette and lunch area. Check out the Matterpoint <a href="#">3D Walkthrough</a> .

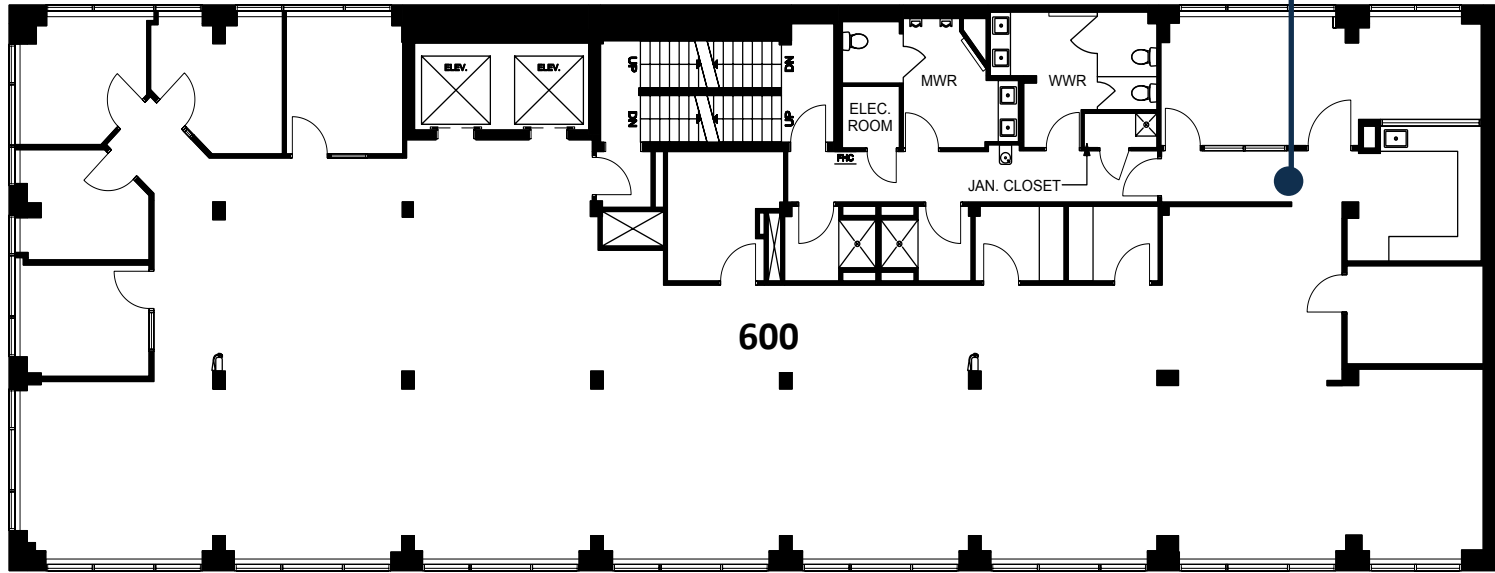
## Building Photos



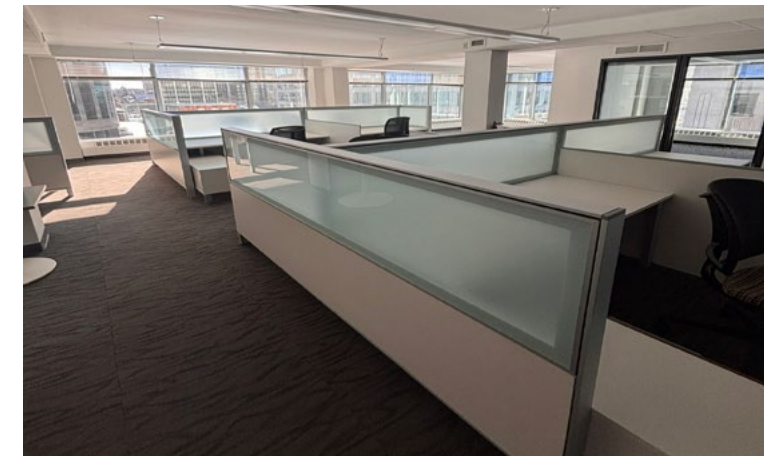
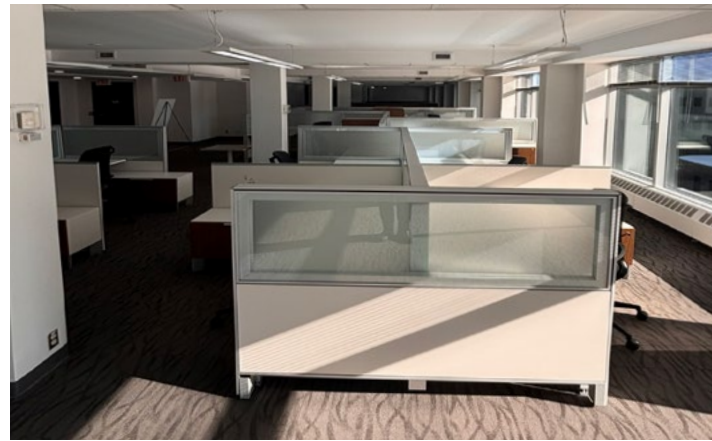
Office Space  
251 Laurier Avenue West

For Lease

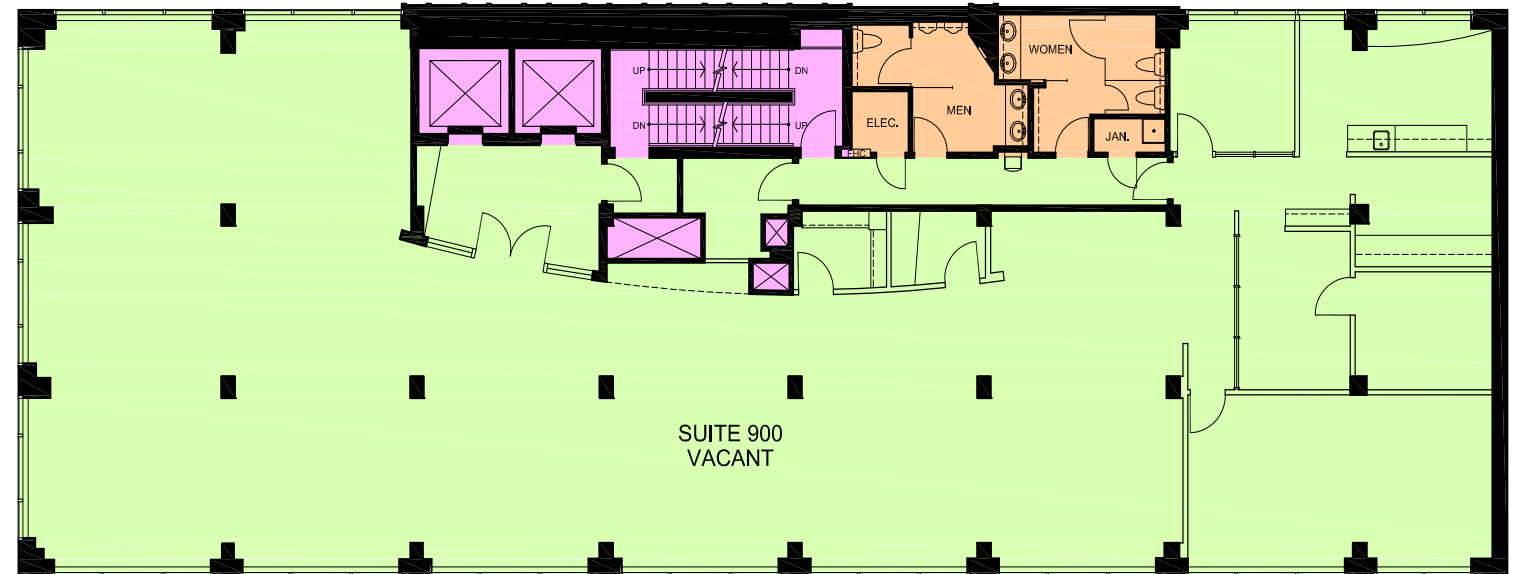
Floor Plan: Unit 600

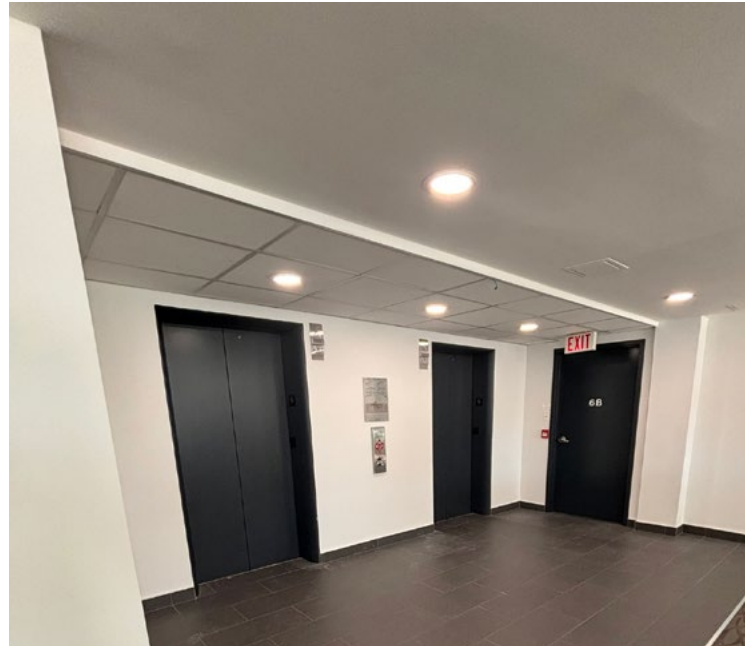


Office Space  
251 Laurier Avenue West



Floor Plan: Unit 900





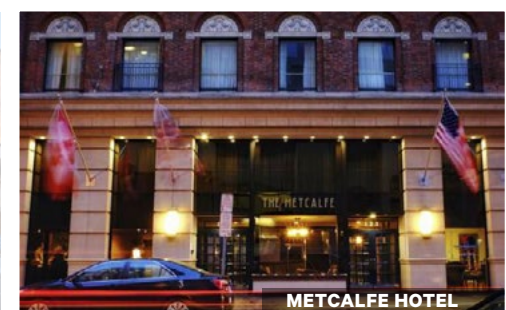
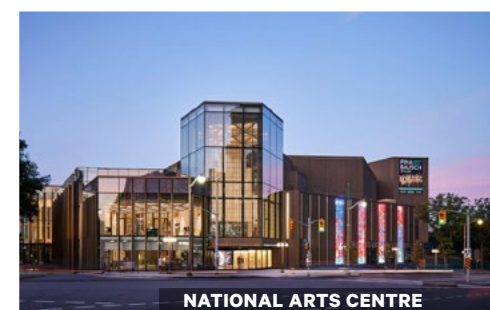
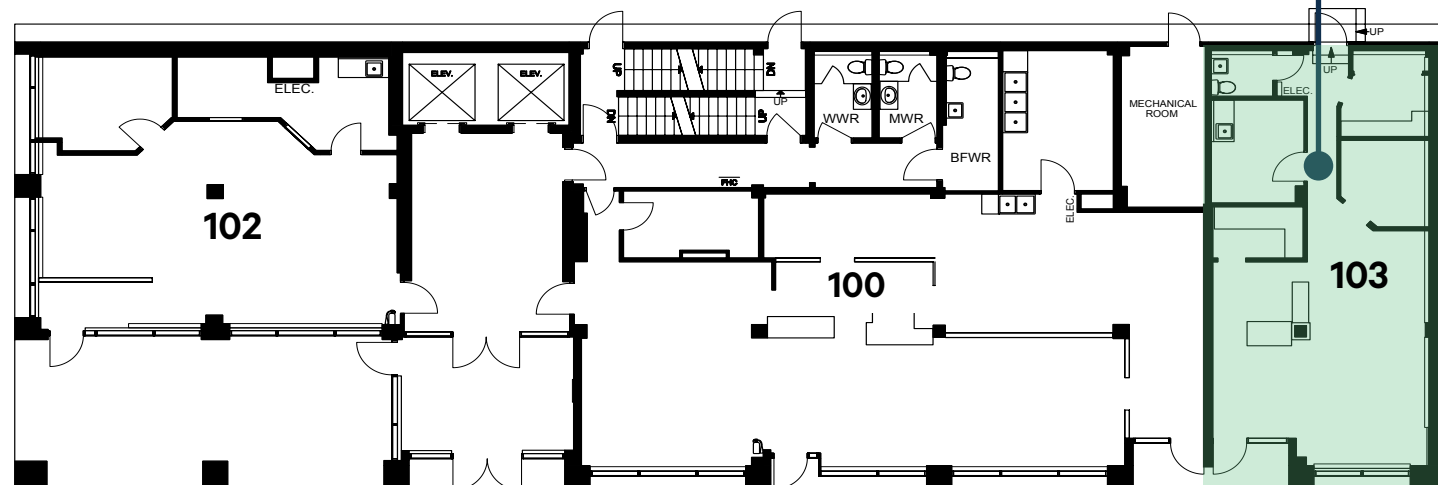
**Access and Amenities**

251 Laurier Avenue West occupies a prime location in the downtown core, benefitting from direct proximity to Ottawa’s major shopping destinations, fine dining, entertainment venues, government buildings, historic landmarks and municipal parks. Within a ten-minute walking radius lies multiple national landmarks including Parliament Hill, the Centennial Flame, the Supreme Court, Confederation Park and multiple museums. Also within walking distance lies the CF Rideau Centre, Ottawa’s premier shopping destination. Just east of the Property, easily accessible by transit, lies the Byward Market – a historic market and focal point that features a diverse assortment of foods, services and entertainment.



**Retail Ground Floor Plan**

Suite 103 | 904 SF



# Location Map

251 Laurier Avenue West

# For Lease



**PARLIAMENT LRT**  
4 MINUTE WALK | 300m



**PARLIAMENT HILL**  
6 MINUTE WALK | 500m



### BUS ROUTES

- 6** Greenboro - Rockcliffe
- 7** Carleton - St. Laurent
- 11** Parliament - Bayshore



**ACCESS TO HIGHWAY 417**  
3 MINUTE DRIVE | 1.3km

## Contact Us

### Jamie Boyce\*

Senior Vice President  
T: +1 613 788 2747  
E: jamie.boyce@cbre.com

### Tim Eberts\*

Associate Vice President  
T: +1 613 691 2138  
E: tim.eberts@cbre.com

### CBRE Limited

Real Estate Brokerage  
340 Albert Street, Suite 1900  
Ottawa, ON K1R 7Y6

\*Sales Representative

CBRE Limited. All rights reserved. This information has been obtained from sources believed reliable, but has not been verified for accuracy or completeness. You should conduct a careful, independent investigation of the property and verify all information. Any reliance on this information is solely at your own risk. CBRE and the CBRE logo are service marks of CBRE Limited. All other marks displayed on this document are the property of their respective owners, and the use of such logos does not imply any affiliation with or endorsement of CBRE. Photos herein are the property of their respective owners. Use of these images without the express written consent of the owner is prohibited.