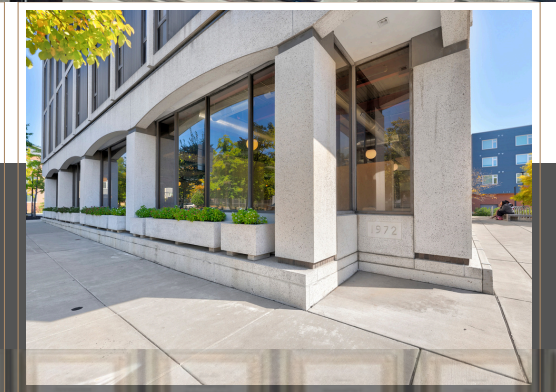




THE DETECTIVE BUILDING

224 N. EUCLID AVE. PITTSBURGH, PA 15206



FOR LEASE RETAIL / SHOWROOM 3,707 SF

STORAGE SPACE 5,287 SF

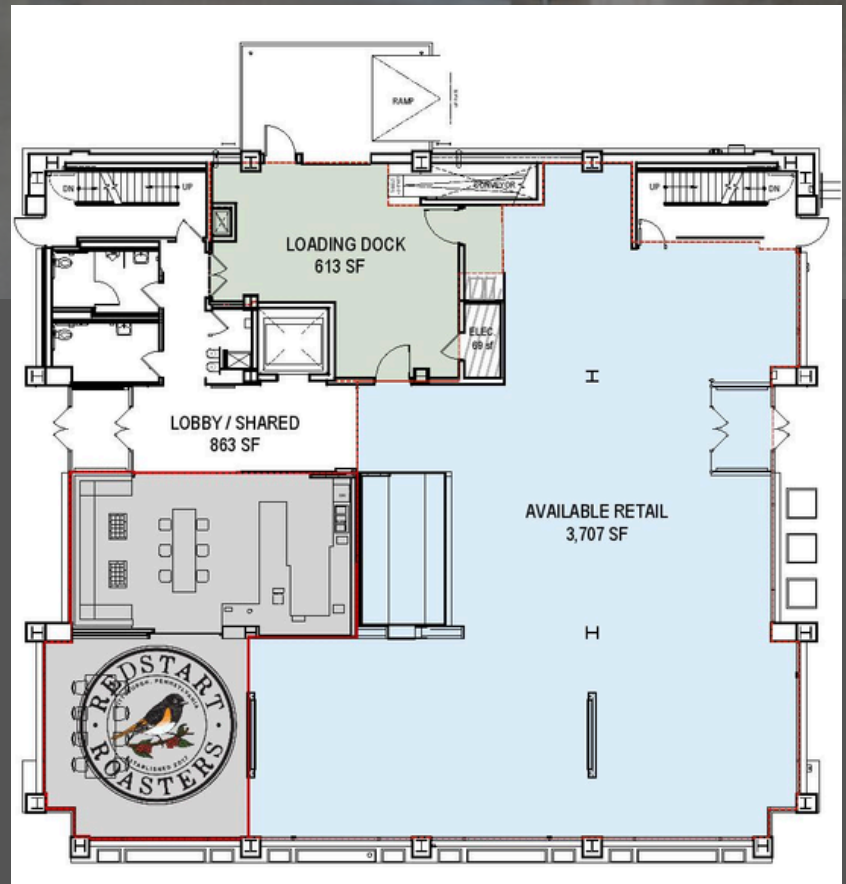
DEMOGRAPHICS

	1 mile	3 miles	5 miles
POPULATION	35,038	175,484	331,570
HOUSEHOLDS	18,308	80,955	154,875
AVG HOUSEHOLD INCOME	\$91,384	\$87,170	\$84,886
DAYTIME EMPLOYMENT	22,123	210,931	415,192



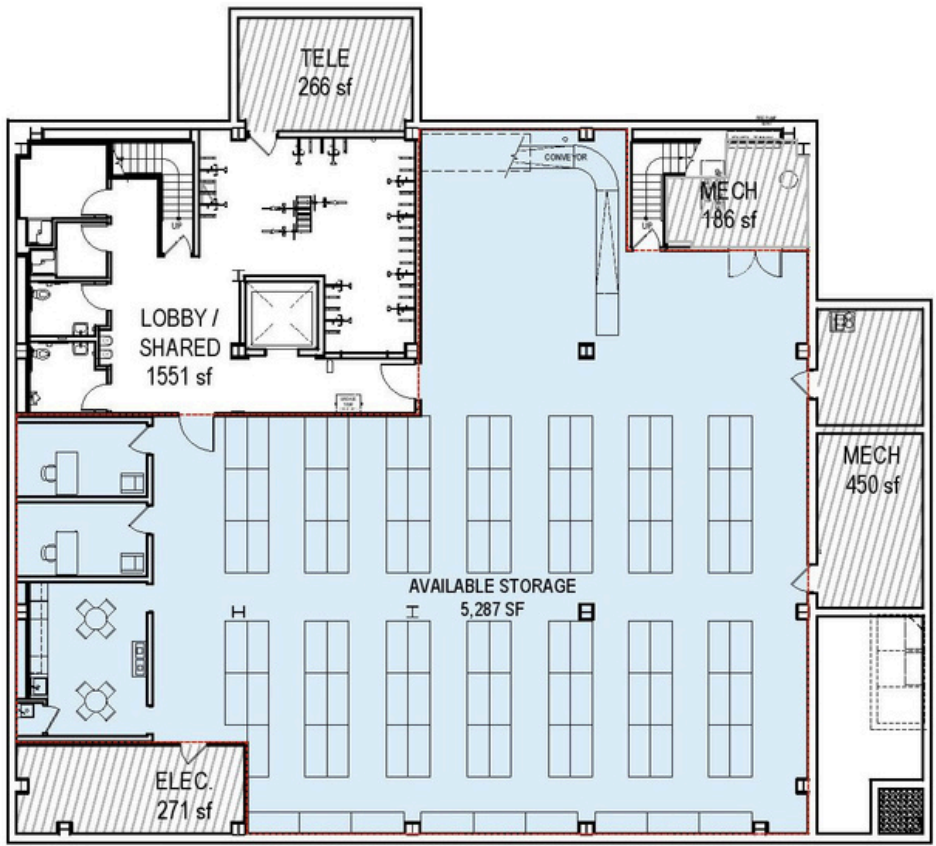
PROPERTY DETAILS

This mid-century modern property, originally built in 1972 and meticulously renovated in 2019, is a mixed-use building rich with history, once housing the City of Pittsburgh Bureau of Police Investigations. Now a vibrant part of the East Liberty community and Penn Avenue business district, the property offers on-site parking, an inviting outdoor patio, and an on-site coffee shop. It features a spacious retail showroom complete with a loading dock along with flexible lower-level storage and office spaces, providing versatility for various business needs.



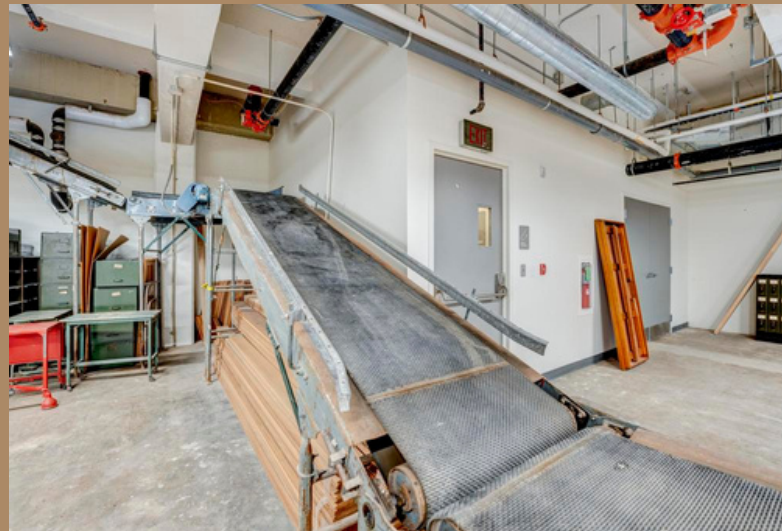
RETAIL SPACE

- Polished concrete floors
- Industrial-style exposed ceilings
- Built-in checkout counter
- Loading dock adjacent to retail space
- Built-in conveyor belt in loading dock for easy access to lower level storage space
- Large windows flooding the area with natural light



STORAGE SPACE

- Built in shelving
- Elevator access
- Employee breakroom & bike storage



FOR MORE INFORMATION PLEASE CONTACT OUR LEASING TEAM

ERIN BELL HIRT | 724.344.3774 | EBELL@MOSITES.COM

DAN FRIDAY | 412.952.0168 | DAN@MOSITES.NET