

# HOLLYWOOD OFFICE

FOR LEASE

# 818

N La Brea Avenue  
Los Angeles, CA 90038



## AVAILABLE

±5,340 RSF (divisible)

## RENTAL RATE

Negotiable

## TERM

Negotiable

- Modern Two (2) Story Office Building
- Exposed Ceilings and Cement Floors Throughout Ground Floor, Furniture Negotiable
- Furniture and Editorial Equipment Available for Rent or Purchase
- Gated Facility with Intercom System
- On-site Parking (6 tandem, 12 spaces total)
- Suitable for Creative, Retail, Office Use and More!



**John Prevas**

[jprevas@stone-miller.com](mailto:jprevas@stone-miller.com)

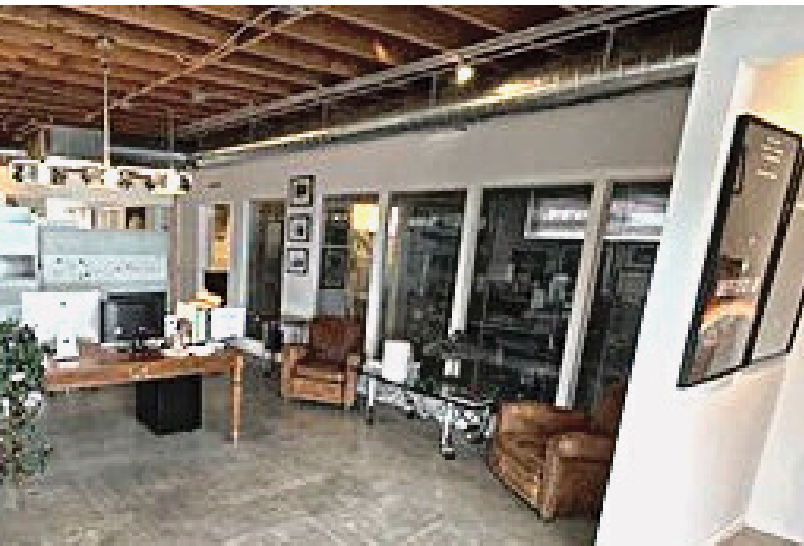
(310) 202-9008 x 119

DRE #01963598

The information furnished regarding rent roll, income, expenses, current and pro forma rents, unit measurements, land measurements and similar data has been submitted to us by others and thus we cannot make any representation as to its accuracy. The information furnished regarding property for sale, rental or financing is submitted subject to errors, omissions, change of price or other conditions, prior to sale, lease or withdrawal without notice.

## FIRST FLOOR - PHOTOS

818 N La Brea Ave  
Los Angeles, CA 90038



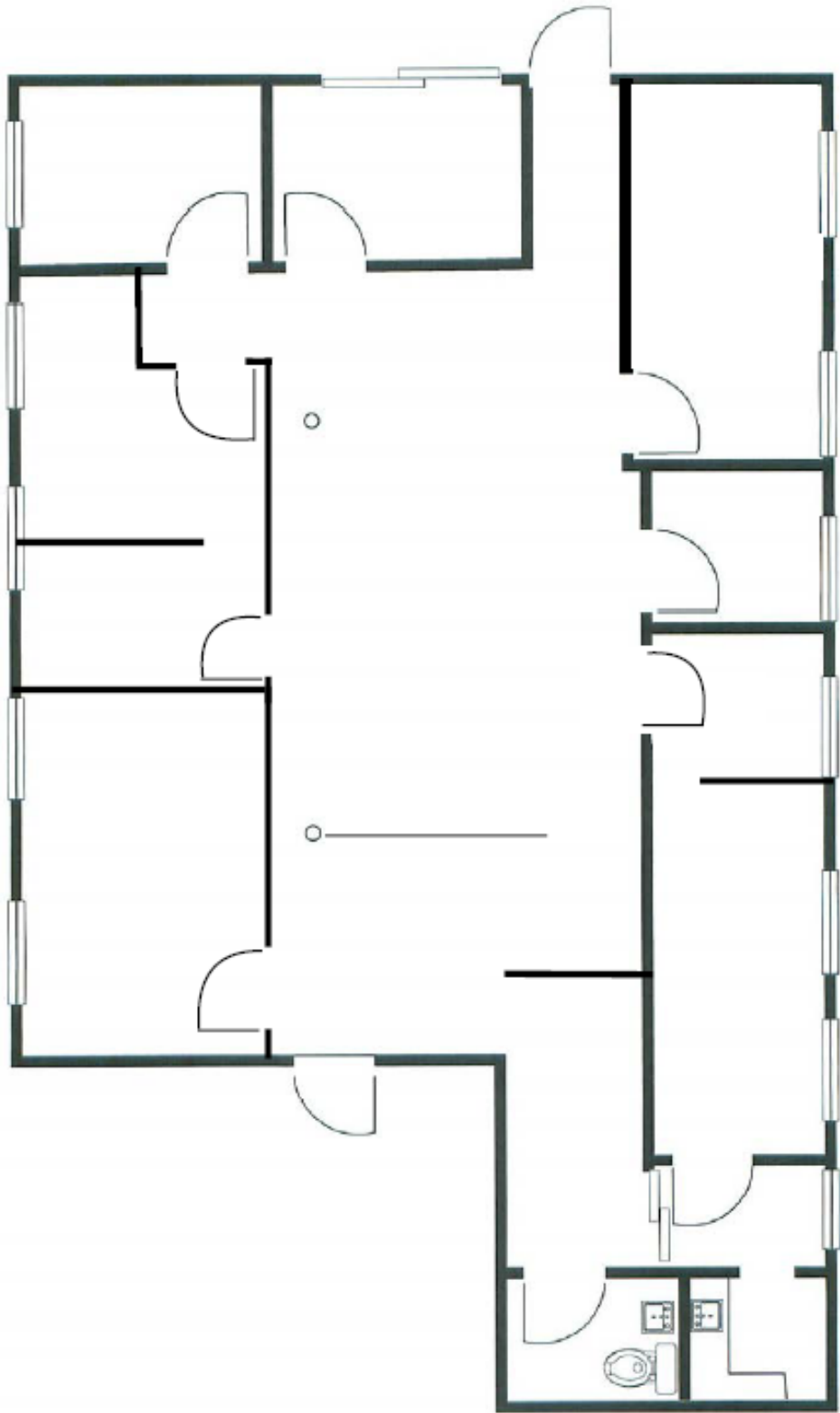
**John Prevas**

[jprevas@stone-miller.com](mailto:jprevas@stone-miller.com)

(310) 202-9008 x 119

DRE #01963598

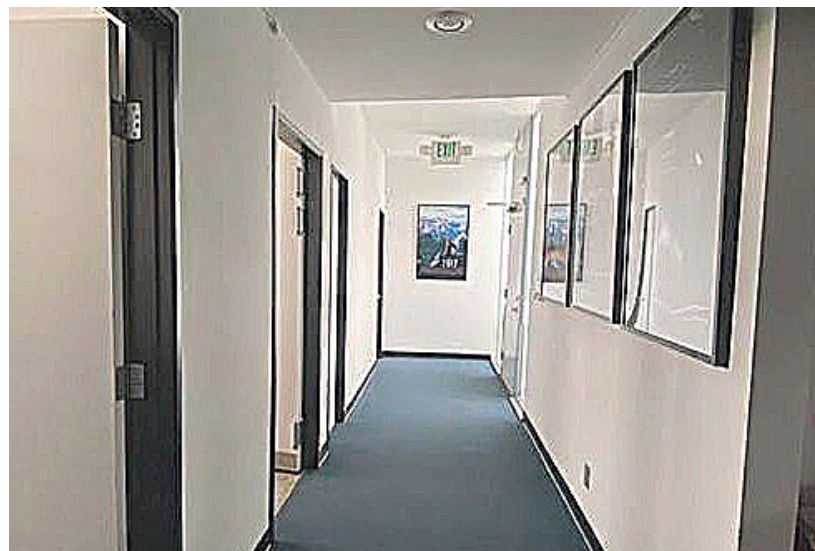
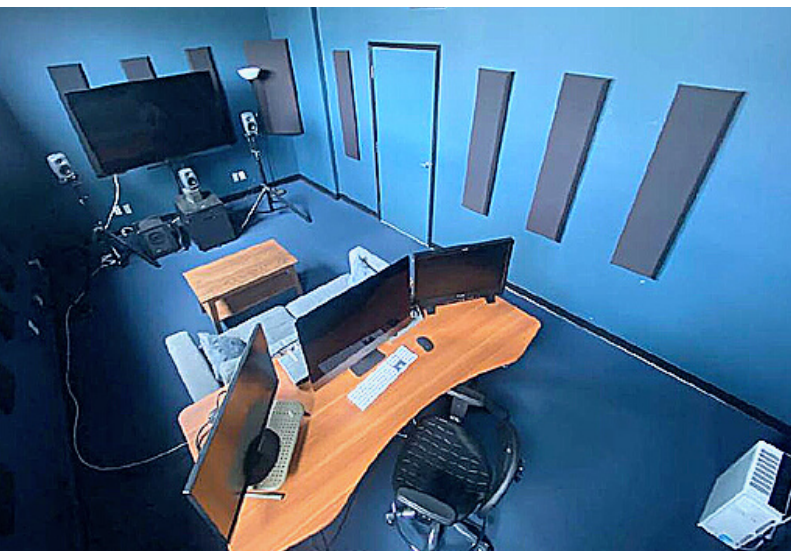
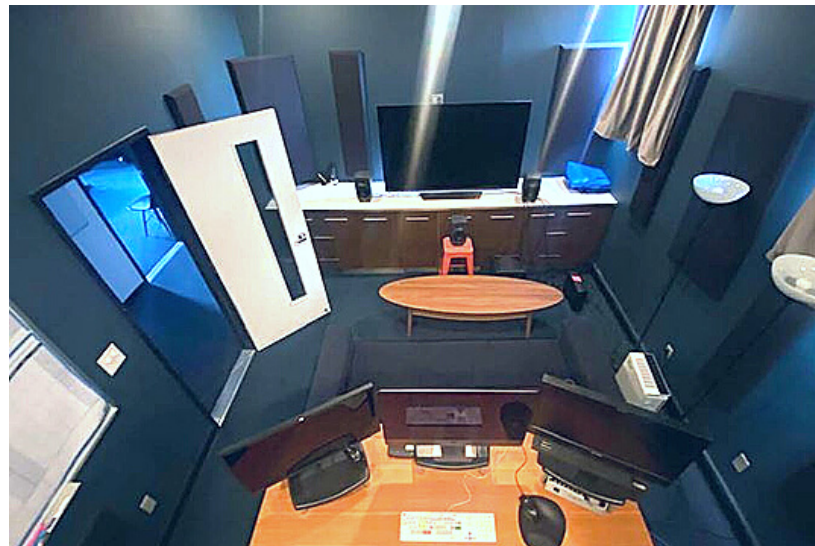
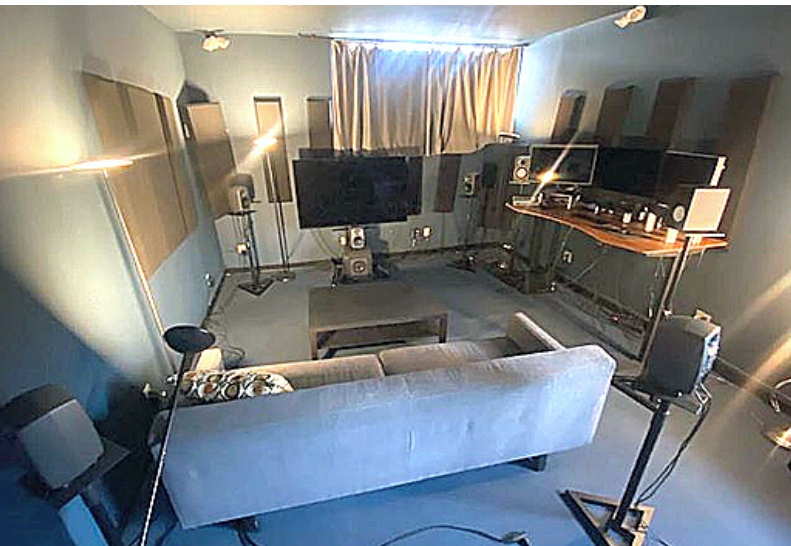
The information furnished regarding rent roll, income, expenses, current and pro forma rents, unit measurements, land measurements and similar data has been submitted to us by others and thus we cannot make any representation as to its accuracy. The information furnished regarding property for sale, rental or financing is submitted subject to errors, omissions, change of price or other conditions, prior to sale, lease or withdrawal without notice.



**John Prevas**  
jprevas@stone-miller.com  
(310) 202-9008 x 119  
DRE #01963598

## SECOND FLOOR - PHOTOS

818N La Brea Ave  
Los Angeles, CA 90038



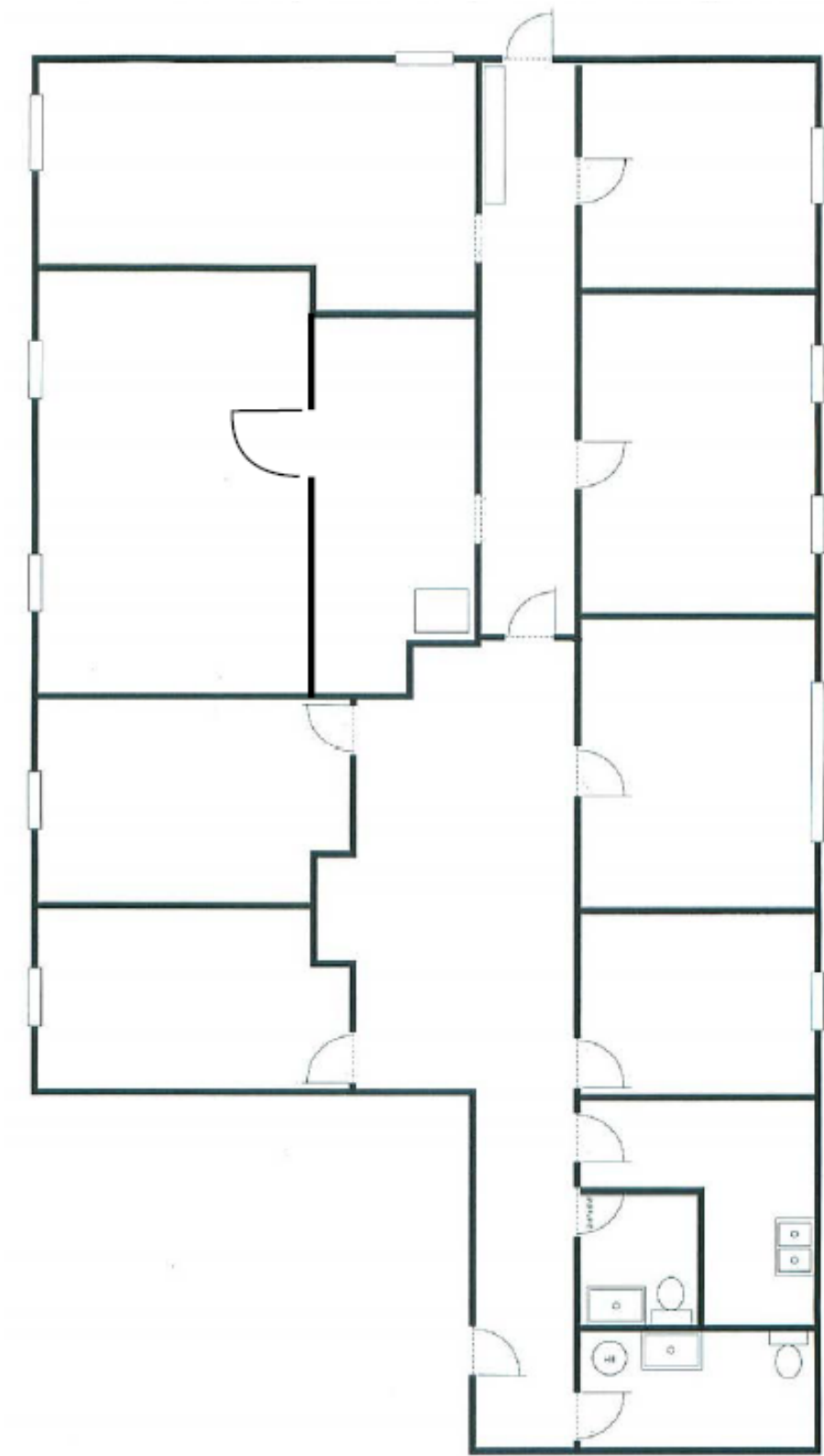
**John Prevas**

[jprevas@stone-miller.com](mailto:jprevas@stone-miller.com)

(310) 202-9008 x 119

DRE #01963598

The information furnished regarding rent roll, income, expenses, current and pro forma rents, unit measurements, land measurements and similar data has been submitted to us by others and thus we cannot make any representation as to its accuracy. The information furnished regarding property for sale, rental or financing is submitted subject to errors, omissions, change of price or other conditions, prior to sale, lease or withdrawal without notice.



**John Prevas**

[jprevas@stone-miller.com](mailto:jprevas@stone-miller.com)

(310) 202-9008 x 119

DRE #01963598