



FOR LEASE

Evergreen Plaza, 200/220/250 Evergreen, Sherman, Texas



OVERVIEW

Total Complex: 23,458 SF
Suite 220: 4,200 SF \$10 / NNN
Suite 242/244: 1,245 SF \$12 / NNN
Suite 250: 2,600 SF \$12 / NNN
Zoning: C1 - Retail Business District
Ample Surface Lot Parking
Easy Access to Hwy 75 and Texoma Pkwy

PROPERTY DETAILS

Fantastic Office Suites Available in fast growing Sherman! Evergreen Office Plaza has a great mix of professional tenants and is suitable for professional or medical office users. The property has ample parking, great visibility, and easy access to Highway 75 and Texoma Parkway. Call Broker for more information!



prestonbendre.com

Randy Jay,
Principal Broker
972.413.0375
randy@prestonbendre.com

Floor Plan

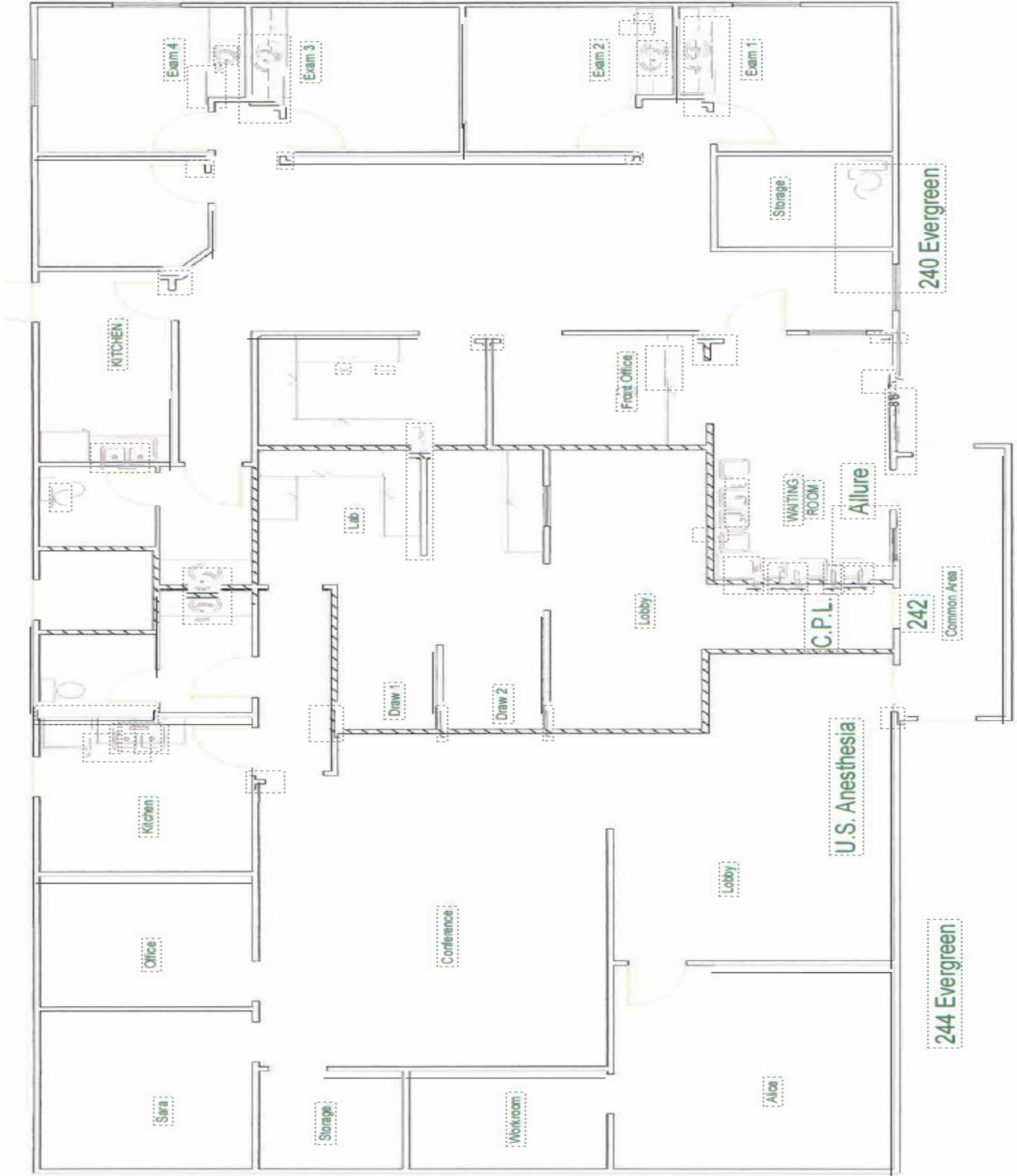


prestonbendre.com

Randy Jay,
Principal Broker

972.413.0375
randy@prestonbendre.com

Floor Plan



prestonbendre.com

Randy Jay,
Principal Broker

972-413-0375
randy@prestonbendre.com

Floor Plan



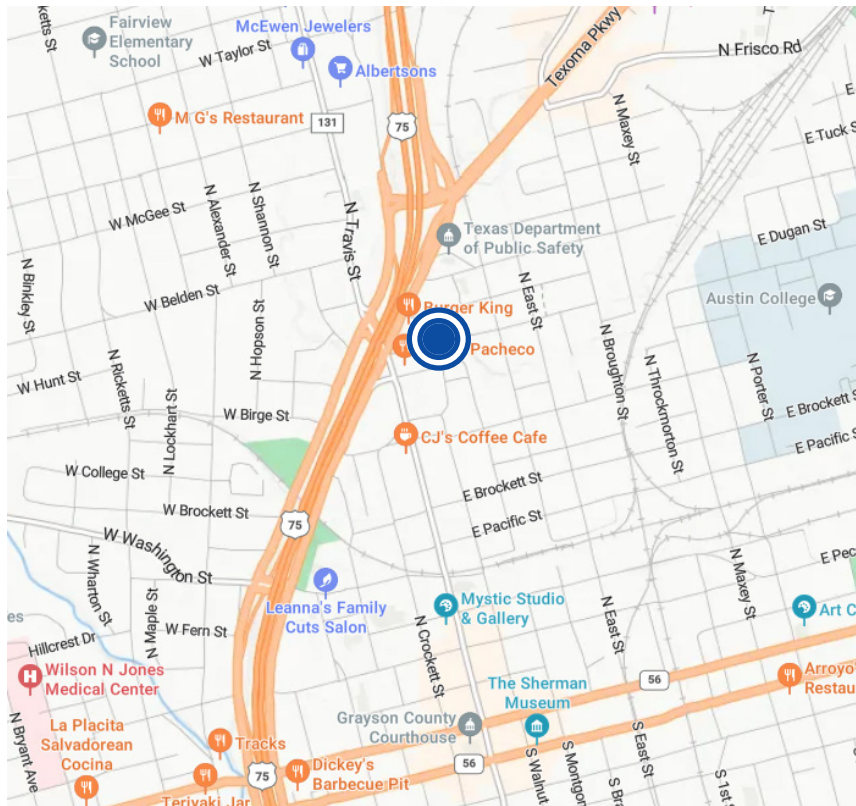
prestonbendre.com

Randy Jay,
Principal Broker

972-413-0375

randy@prestonbendre.com

Site Aerial



THE INFORMATION CONTAINED HEREIN HAS BEEN GIVEN TO US BY THE OWNER OF THE PROPERTY OR OTHER SOURCES WE DEEM RELIABLE. WE HAVE NO REASON TO DOUBT ITS ACCURACY, BUT WE DO NOT GUARANTEE IT. ALL INFORMATION SHOULD BE VERIFIED PRIOR TO PURCHASE OR LEASE.



prestonbendre.com

Randy Jay,
Principal Broker

972.413.0375

randy@prestonbendre.com