

2025 PROMO: \$3.00/SF FS (FOR DEALS COMPLETED BY 06/30/2025)

NORTH SAN JOSE, CLASS A OFFICE

2150

North First Street

NEWMARK



PROJECT HIGHLIGHTS

- Class A Office
- Common Conference Center
- Fitness Center
- Outdoor Common Area with Bluetooth
- High-end Building Lobby
- Monument Signage available
- Parking: 3.2/1,000
- Easy access to Highways 101 and 880
- Near San Jose International Airport
- Immediate access to VTA Lightrail
- Walkable restaurants
- EXPANSIVE Co-Working on site
- Co-Working Membership available
- Fee-based Fiber access (optional)



Membership Access Cities for Co-Working



Fiber Access for Tenants (optional)



DEDICATED BANDWIDTH

Subject to availability.

\$50/month	50 MBPS
\$100/month	75 MBPS
\$150/month	100 MBPS
\$200/month	150 MBPS
\$300/month	200 MBPS

Comes with the bandwidth selected + private VLAN + ability to set static IPs

*Subject to availability

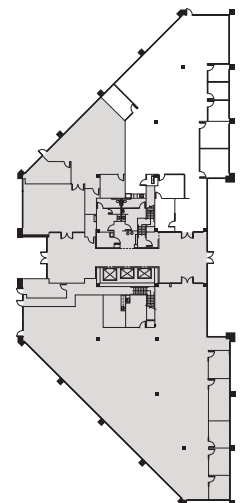
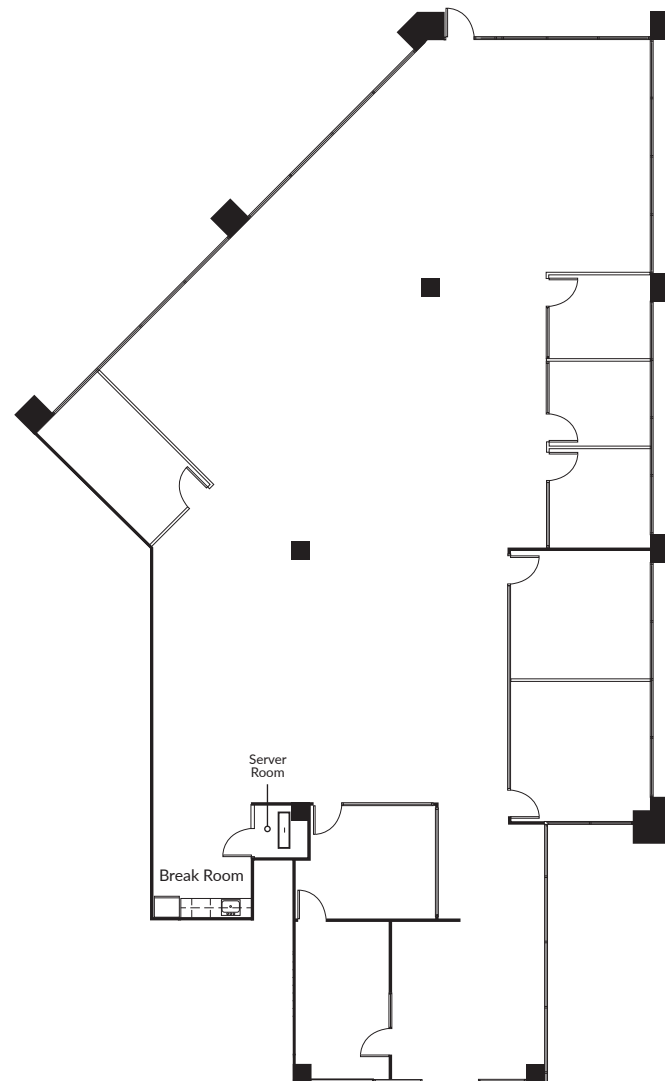
RACK STORAGE

Rack storage is limited. If granted, charges will apply.

AVAILABLE SPACE

SUITE 100 ±5,970 SF

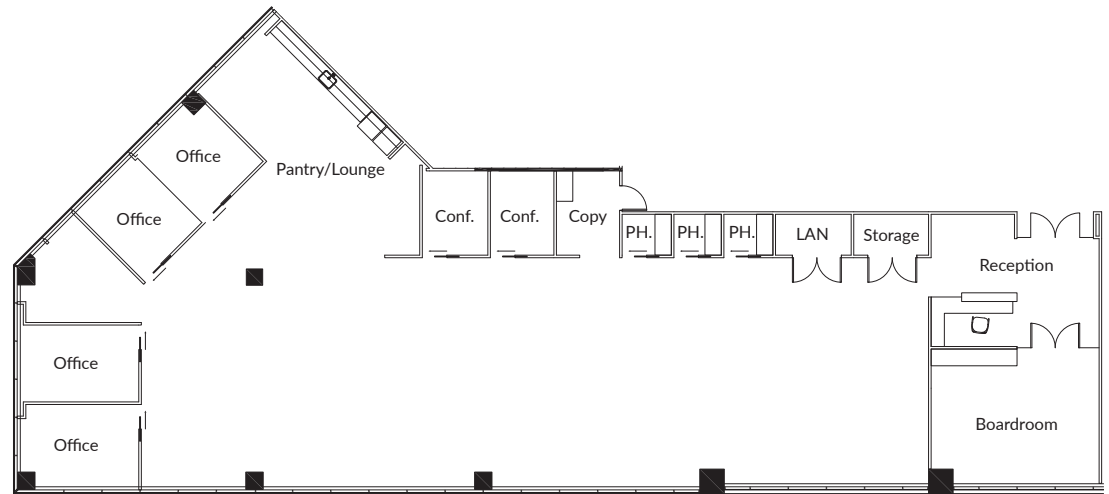
- Mix of Privates and Open Office
 - » 3 Private Offices
 - » 4 Conference Room
 - » Break Room
 - » Supply Room
 - » IT/Server Room
- Extensive Window-Line with Excellent Views
- Available Now



AVAILABLE SPACE

SUITE 450 ±6,019 SF

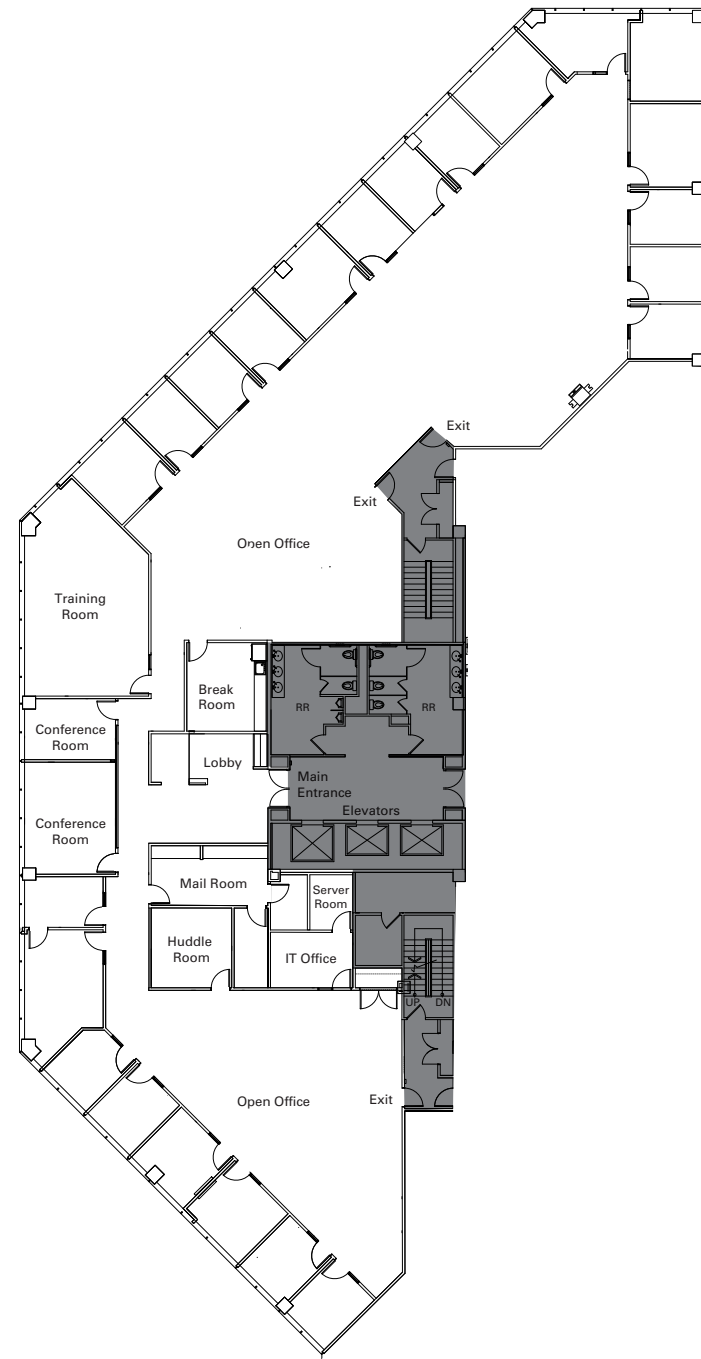
- Board Room
- 2 Conference Rooms
- 4 Private Offices
- 3 Phone Booths
- Open Plan for ±50 Desks
- Reception Area
- Supply Storage Room
- Server Room
- New Break Room
- Extensive Window Line
- Available with 60-days notice



AVAILABLE SPACE

SUITE 500 ±13,147 SF

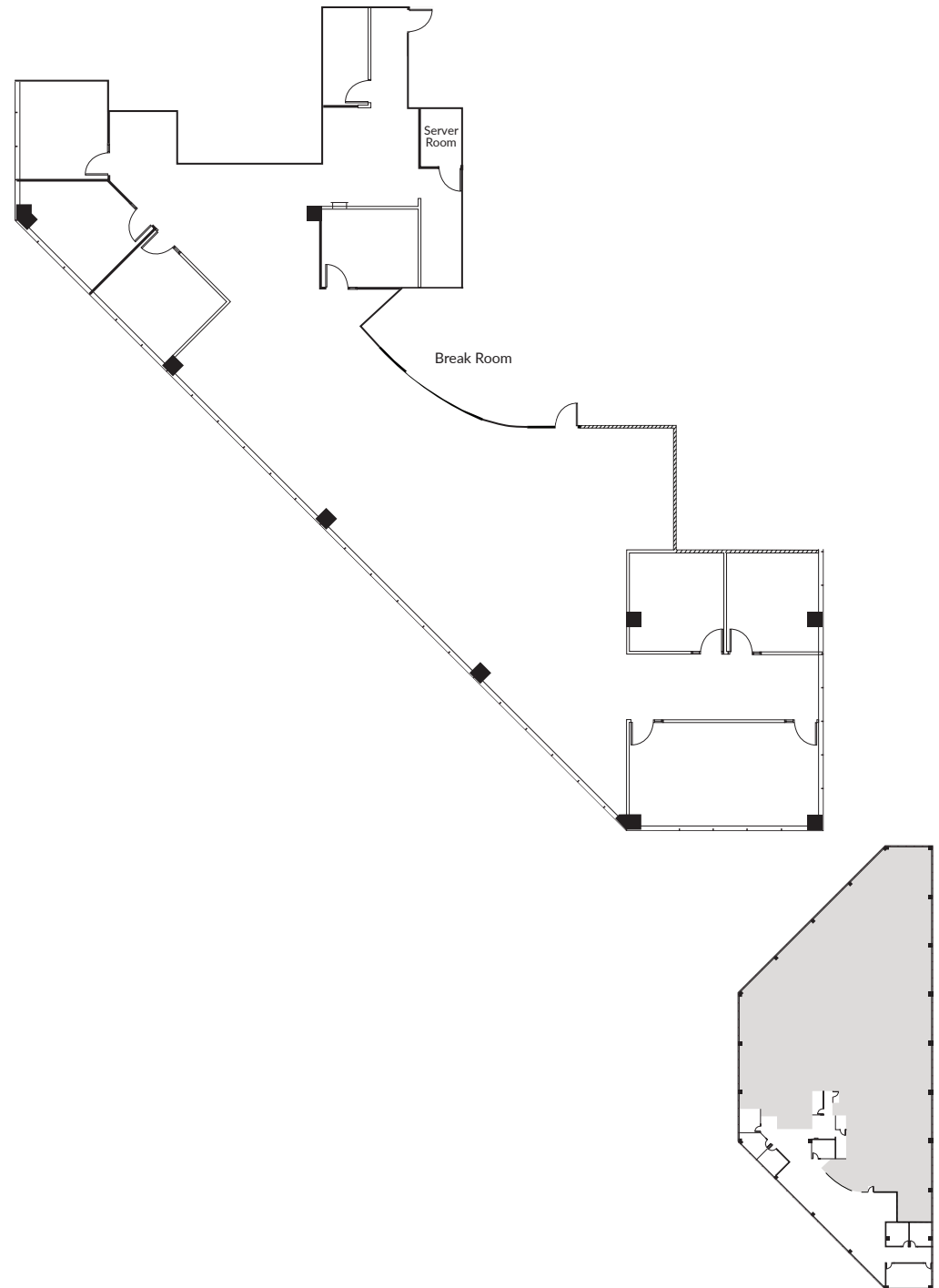
- Professional Service Build-Out
- 24 Private Offices
- 2 Conference Rooms + 1 Training Room
- 3 Storage/ Supply Rooms
- IT Office + Server Room w/ Dedicated Air
- Double-Door Elevator Lobby Entrance
- Turnkey Furniture Available
- Beautiful Views
- Deliverable in 30-60 Days
- Available 6/1/2025



AVAILABLE SPACE

SUITE 600 ±6,420 SF

- Mix of Privates and Open Office
 - » 5 Private Offices
 - » Boardroom
 - » Conference Room
 - » Supply Room
 - » Server Room
- Extensive Window-Line with Excellent Views
- Available Now



PROPERTY PHOTOS



BANK OF AMERICA

HOMEWOOD
SUITES by Hilton

Starbucks
SUBWAY
dishdash
iUNAMAS!
Korean House
UME
OKAYAMA
XPRESS
HALAL GYRO EXPRESS

FedEx
Corporation

ANTON
SVPÂTISSERIE

Lowe's

2150
North First Street

BAY
STONE

INTERSTATE
CALIFORNIA
880

101

HYATT
PLACE

HYATT
house

Hampton
by HILTON

Holiday Inn
Express

techCU
TECHNOLOGY CREDIT UNION

extended
STAY AMERICA
premier suites

Denny's

Starbucks
Chevron
PHO
DEL AIR

BURGER KING

ISLICE

Sonesta
ES
SUITES

24
FITNESS

DOUBLETREE
by Hilton

6

76

M8TRIX

FIT MEALZ
VEGAN PLANT-BASED, PREP & DELIVER

THE PROVINCE

HERITAGE
BANK OF COMMERCE

Fairfield
by MARRIOTT

DAY 101
CASINO

87

Starbucks

MIKE'S
LOVE & SANDWICHES

Camille's
artisan coffee

WELLS
FARGO

extended
STAY AMERICA
suites

LOCAL AMENITIES

Mineta San Jose
International Airport



TRANSPORTATION MAP



2150

North First Street

TRACEY SOLARI

Executive Managing Director

408.987.4148

tracey.solari@nmrk.com

CA RE License #01269780

SHAWN KELLENBERGER

Executive Managing Director

408.987.4170

shawn.kellenberger@nmrk.com

CA RE License #01706215

SHERRY GUBERA

Senior Managing Director

408.987.4169

sherry.gubera@nmrk.com

CA RE License #01481856

NEWMARK

The distributor of this communication is performing acts for which a real estate license is required. The information contained herein has been obtained from sources deemed reliable but has not been verified and no guarantee, warranty or representation, either express or implied, is made with respect to such information. Terms of sale or lease and availability are subject to change or withdrawal without notice. 8174012061 • 02/25