

East Davie Commerce Center

2405 College Avenue
Davie, FL 33317

Availability in Class A Industrial Facility



Property Details

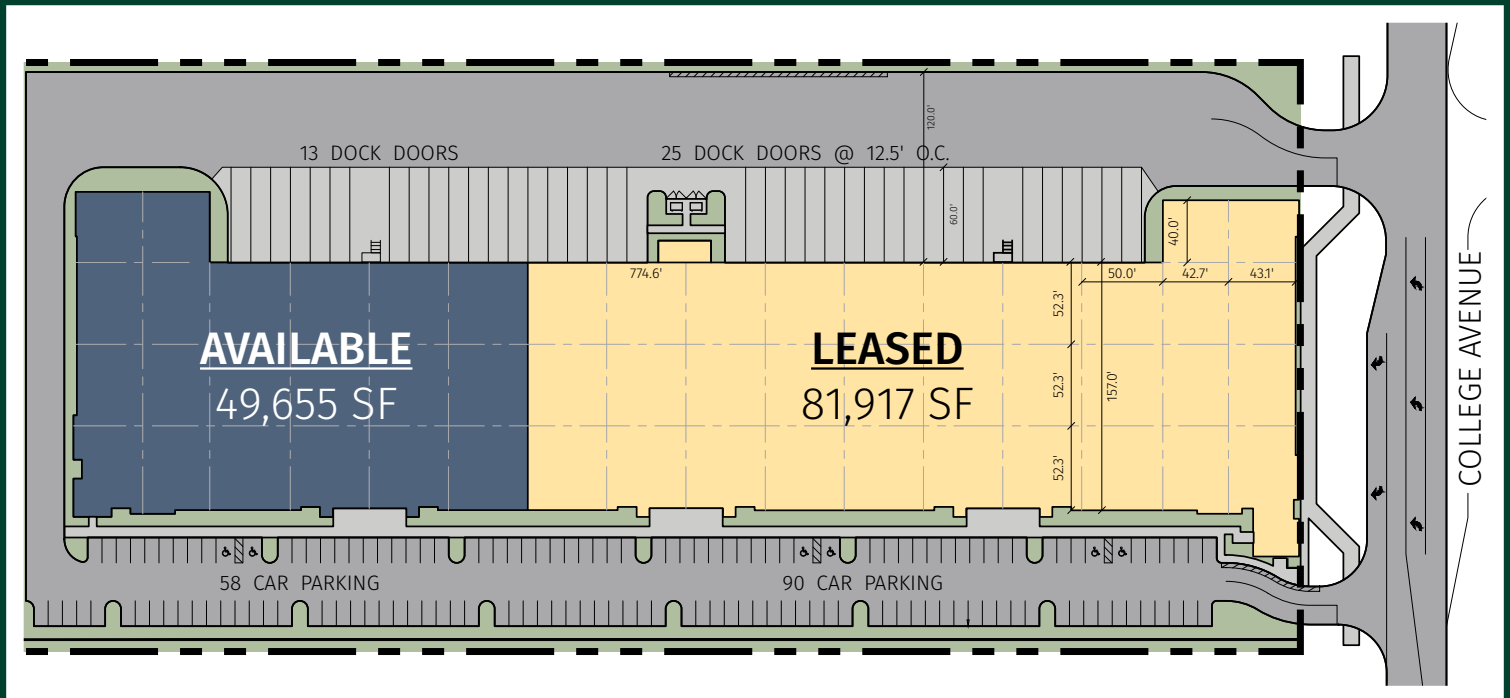
- + Total SF: ±49,655 SF
- + Total Office: ±2,293 SF
- + Dock Doors: 14 (Each with Pit Levelers)
- + 32' Clear
- + ESFR Sprinklers
- + End Cap space with clear story windows
- + Lighting: T5 Lighting with Motion Sensor
- + Electrical: 400 Amp, 277/480 Volt, 3 Phase
- + Direct access via Davie Road, 1 mile from the Florida Turnpike
- + Less than a 5 Mile drive from Ft. Lauderdale-Hollywood International Airport
- + Zoned RAC-RTW
- + Available 5/1/2024
- + Asking: \$17.00 PSF NNN plus \$3.67 OpEx

Contact Us

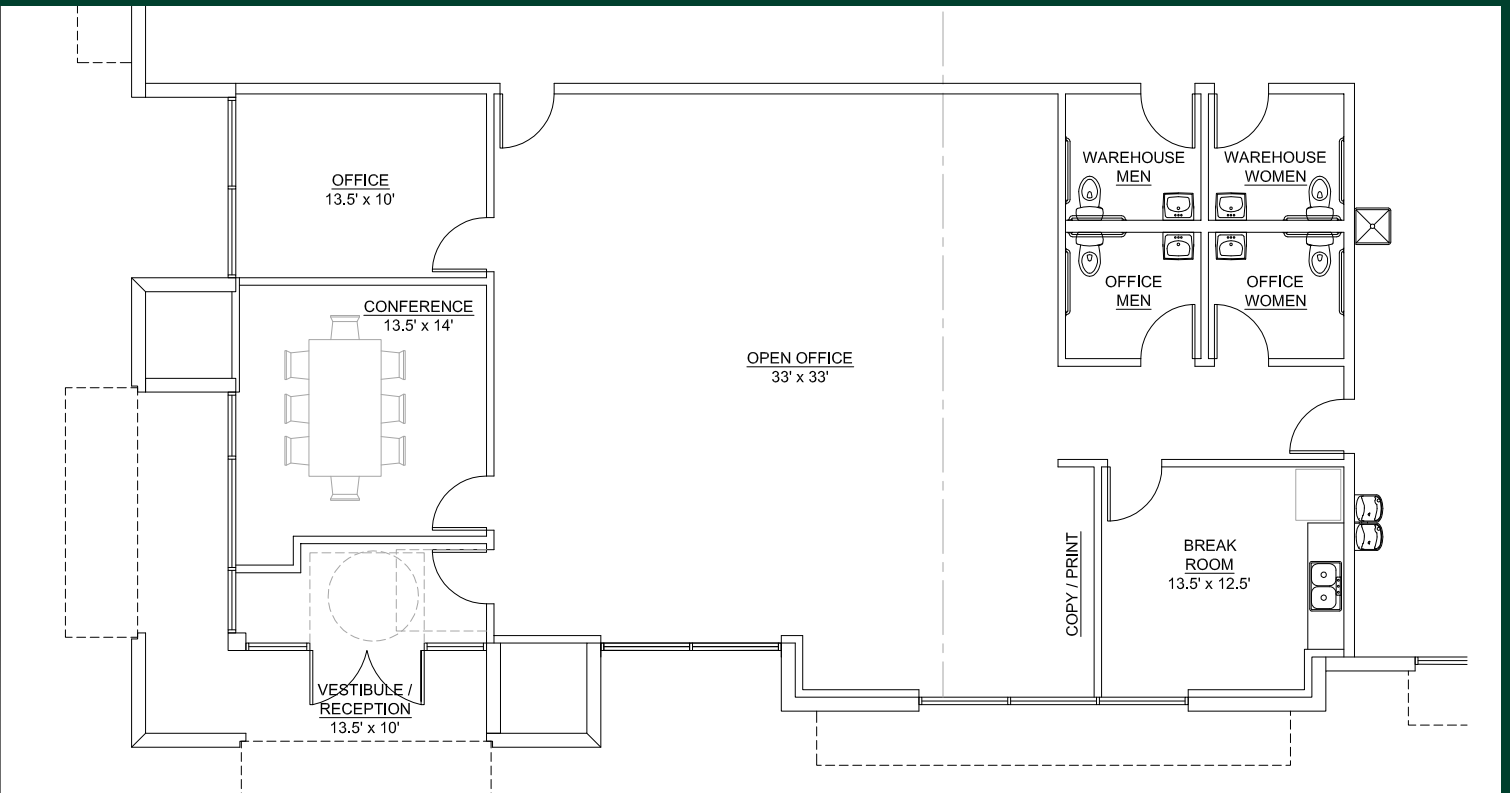
Tom O'Loughlin
Vice Chairman
+1 954 817 3919
tom.oloughlin@cbre.com

Michael Oretsky
Senior Associate
+1 954 798 4284
michael.oretsky@cbre.com

Site Plan



Office Floor Plan



© 2023 CBRE, Inc. All rights reserved. This information has been obtained from sources believed reliable, but has not been verified for accuracy or completeness. You should conduct a careful, independent investigation of the property and verify all information. Any reliance on this information is solely at your own risk. CBRE and the CBRE logo are service marks of CBRE, Inc. All other marks displayed on this document are the property of their respective owners, and the use of such logos does not imply any affiliation with or endorsement of CBRE. Photos herein are the property of their respective owners. Use of these images without the express written consent of the owner is prohibited.