

Mitchell Building

Akron's Wallhaven Neighborhood

1655 West Market Street

Akron, Ohio 44313

Excellent Location



Contact Us

Katie Thome
Senior Associate
+1 330 670 4411
katie.thome@cbre.com

CBRE, Inc.
3421 Ridgewood Rd, Suite 150
Akron, Ohio 44333
www.cbre.us

Mitchell Building

1655 West Market Street | Akron, Ohio 44313

Property Overview

The Mitchell Building is an iconic 6-story office tower in the Wallhaven area of West Akron, proudly displaying its heritage with prominent building signage as the ICWUC/UFCW home in Akron. Strategically positioned at the intersection of W Market, W Exchange and Hawkins, it is steps away from restaurants, retail and other amenities.

The first floor lobby has been renovated and welcomes many office and medical tenants and their clients to the property. The Mitchell Building offers a conference room free to use by the tenants. For the convenience of its tenants, rates are in-inclusive of all utilities and in-suite cleaning at \$15.50 per SF.

- + Six-story, Class B office building
- + Various suite sizes available
 - Maximum contiguous to 4,632 RSF
 - Minimum divisible to 563 RSF
- + Two elevators servicing the building with a separate elevator servicing the top floor
- + Space available for medical use
- + Building offers conference room facility available for all tenants and on-site surface parking

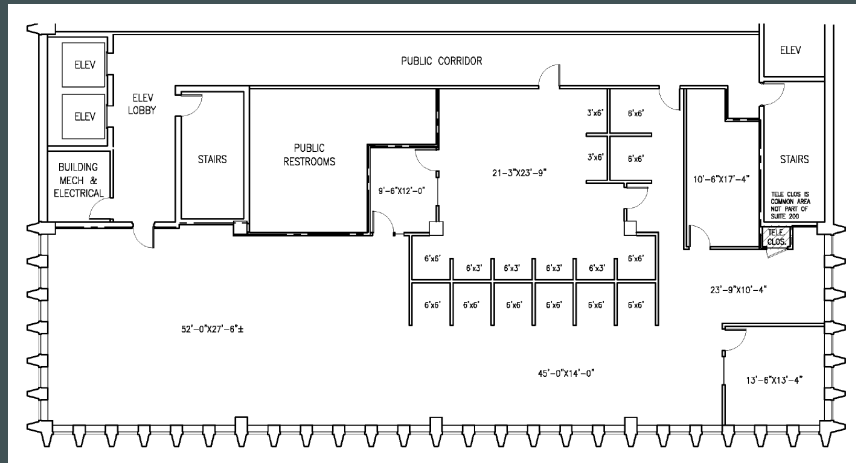
Available Suites

SUITE	SIZE
210	4,632 RSF
320*	848 RSF
340	2,954 RSF
355*	2,073 RSF
415	563 RSF
435	1,142 RSF
530*	2,274 RSF
535*	1,302 RSF
550*	1,254 RSF

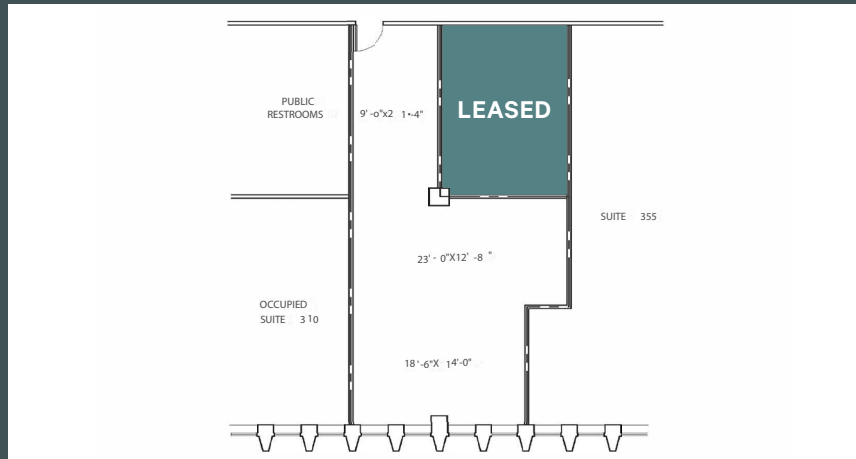
**Indicates suites are expandable*

Suites 315, 320 and 355 can be combined for contiguous 3,202 RSF

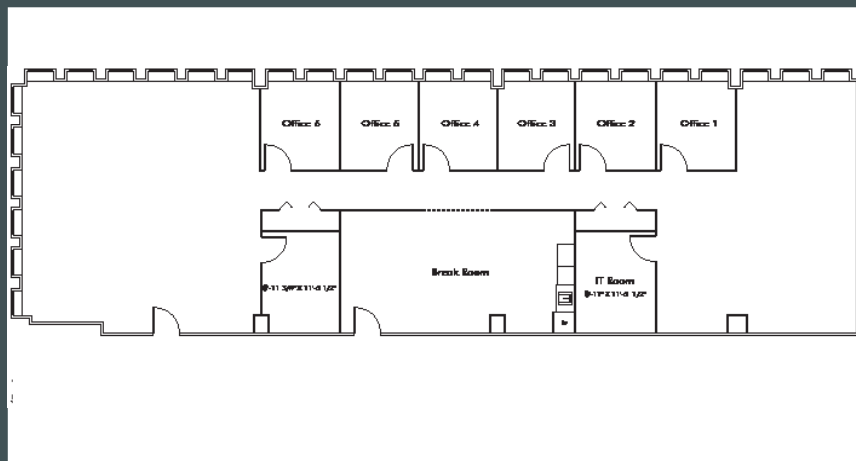
Suite 210 - 4,632 RSF



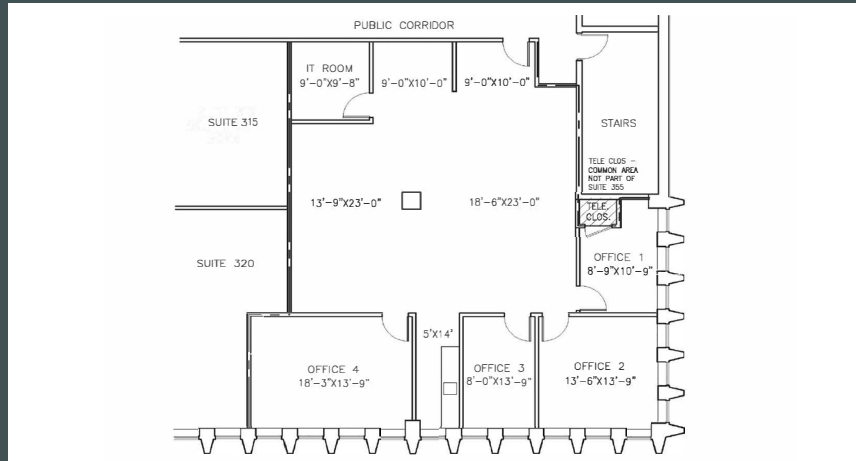
Suite 320 - 848 RSF



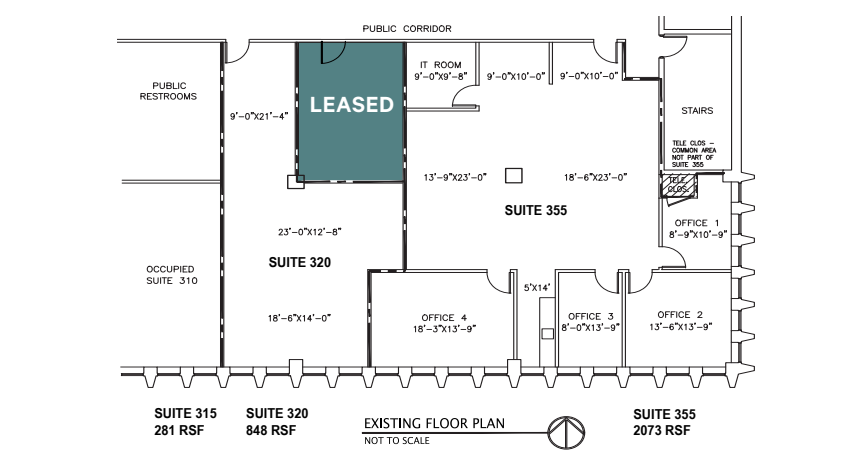
Suite 340 - 2,954 RSF



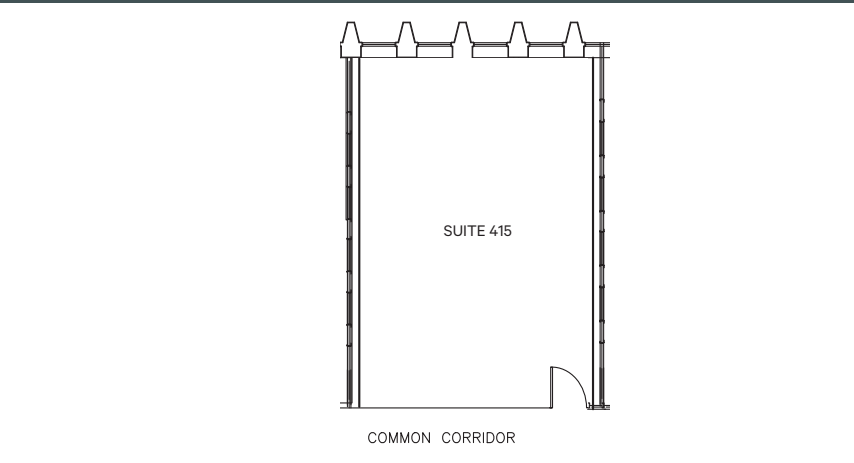
Suite 355 - 2,073 RSF



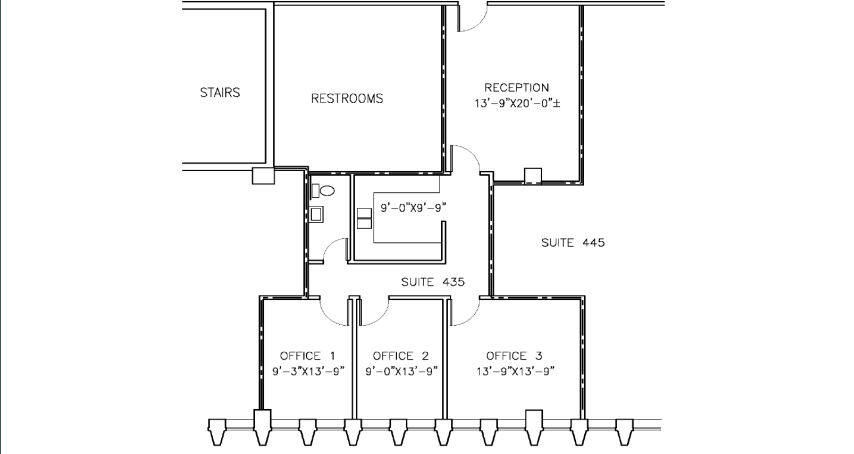
Floor 3: Suite 320 and 355 - 2,921 RSF



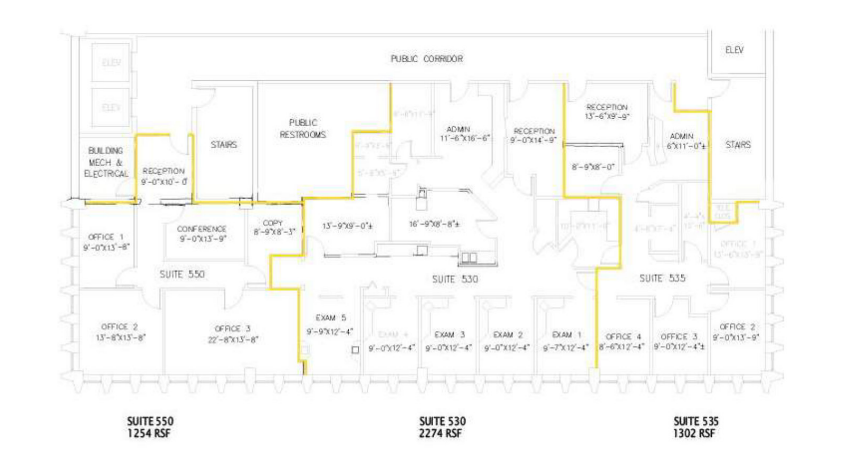
Suite 415 - 563 RSF



Suite 435 - 1,142 RSF



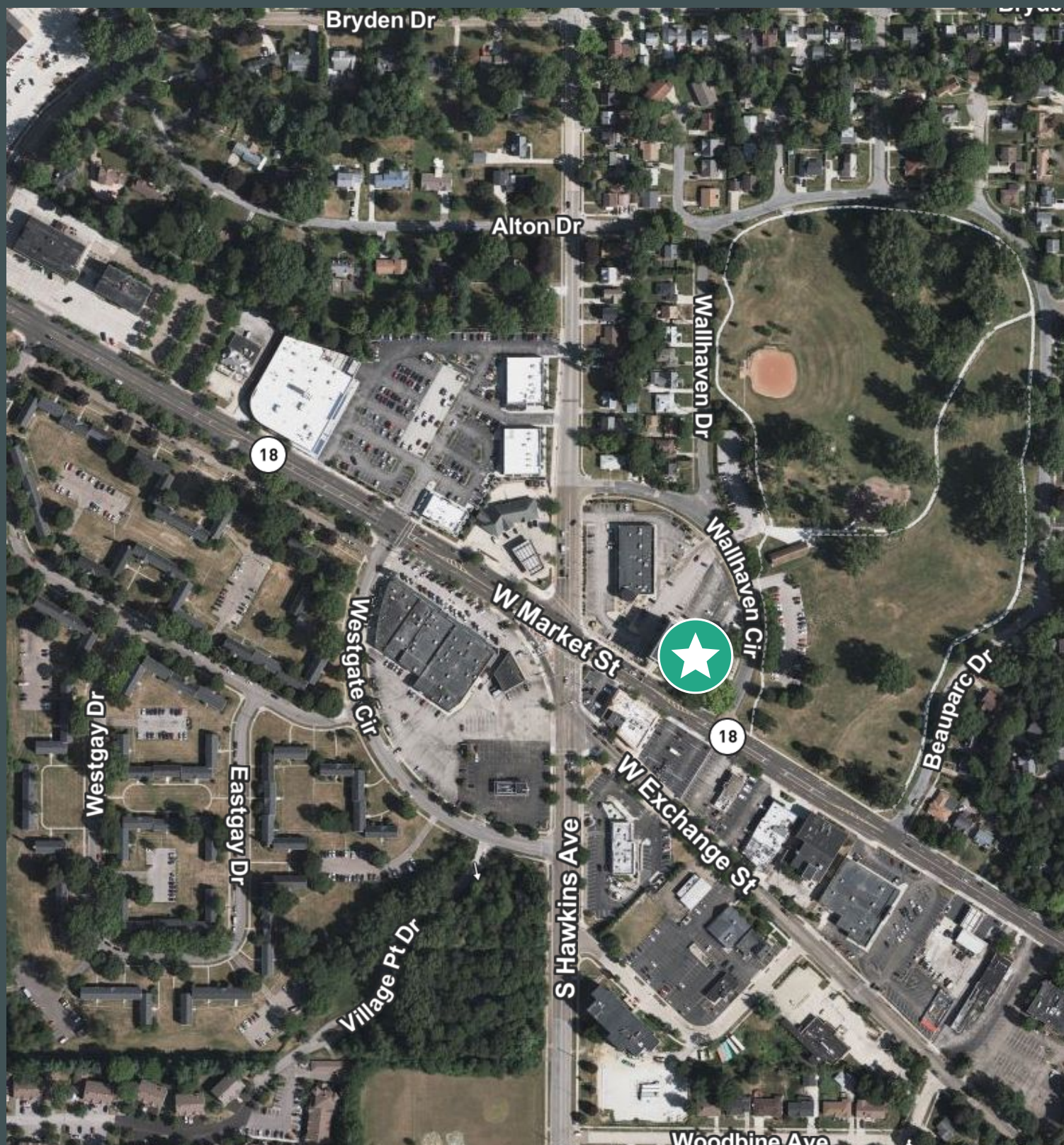
Floor 5 - 4,830 RSF



Mitchell Building

1655 West Market Street | Akron, Ohio 44313

For Lease



© 2025 CBRE, Inc. All rights reserved. This information has been obtained from sources believed reliable, but has not been verified for accuracy or completeness. You should conduct a careful, independent investigation of the property and verify all information. Any reliance on this information is solely at your own risk. CBRE and the CBRE logo are service marks of CBRE, Inc. All other marks displayed on this document are the property of their respective owners, and the use of such logos does not imply any affiliation with or endorsement of CBRE. Photos herein are the property of their respective owners. Use of these images without the express written consent of the owner is prohibited. Licensed Real Estate Broker.