



OFFICE/R&D BUILDING

FOR LEASE

*Freestanding Office/R&D Building For Lease, Located
in High-Image Koll Oakmead Park*

3350 SCOTT BLVD, BLDG 64, SANTA CLARA, CA

±5,000 SF
AVAILABLE

\$2.95
GROSS LEASE RATE



PROPERTY HIGHLIGHTS

±95% drop ceiling/HVAC

Perimeter offices, server rooms, large kitchen, and conference room

New Class A interiors

Generous glass line

Prominent Scott Blvd street signage

Power: 400 amps, 120/208 volt, 3 phase power (tenant to verify power with electrician)

Grade level door

Asking \$2.95 gross + \$0.18 PSF CAM charge

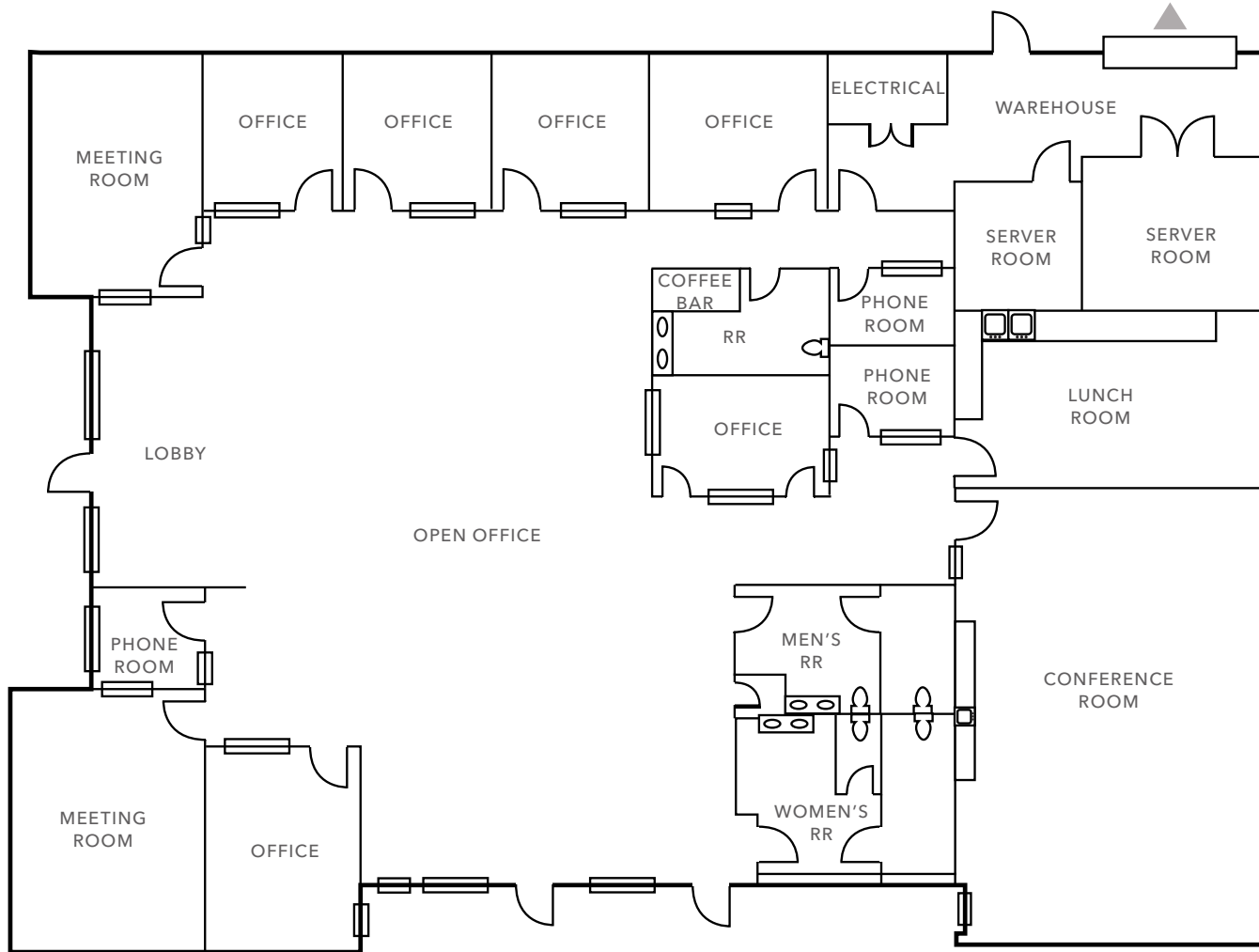
Available now

Call to tour

KIDDER.COM

This information supplied herein is from sources we deem reliable. It is provided without any representation, warranty, or guarantee, expressed or implied as to its accuracy. Prospective Buyer or Tenant should conduct an independent investigation and verification of all matters deemed to be material, including, but not limited to, statements of income and expenses. Consult your attorney, accountant, or other professional advisor. All Kidder Mathews designs are the sole property of Kidder Mathews. Branded materials and layouts are not authorized for use by any other firm or person.

FLOOR PLAN | BUILDING 64



▲ Grade level loading
FLOOR PLAN NOT TO SCALE

6

PRIVATE OFFICES

95%

DROP CEILING/HVAC

NOW

AVAILABLE

JOE SWANSON

Kidder Mathews

408.588.2351

joe.swanson@kidder.com

LIC N° 01263138

PAUL GRIFFITHS

Kidder Mathews

408.588.2352

paul.griffiths@kidder.com

LIC N° 01432670

KIDDER.COM

This information supplied herein is from sources we deem reliable. It is provided without any representation, warranty, or guarantee, expressed or implied as to its accuracy. Prospective Buyer or Tenant should conduct an independent investigation and verification of all matters deemed to be material, including, but not limited to, statements of income and expenses. Consult your attorney, accountant, or other professional advisor. All Kidder Mathews designs are the sole property of Kidder Mathews. Branded materials and layouts are not authorized for use by any other firm or person.



