

FOR LEASE
Scottsdale Airpark Flex Space
7621 & 7641 East Gray Rd
Three Suites Available



- **Three suites presently available:**
 - **7641 E Gray Rd Suite B1 – 2,246 sf.** Open floor plan with small warehouse in rear and 10' roll up door. \$3,150/mo Industrial Gross
 - **7641 E Gray Rd Suite G – 2,174 sf.** Three private offices, break area, and warehouse with 12' roll up door and high ceilings in warehouse. Evap cooled warehouse. \$3,200/mo Industrial Gross
 - **7621 E Gray Rd Suite F - 2,522 sf.** One private office, large bullpen area, warehouse with two 12' roll up doors. Evap cooled warehouse. Brand new renovation. \$3,950/mo Industrial Gross
- **New carpet and paint prior to occupancy. October availability. 3-year minimum term.**

CONTACT:

ERIC SCHAEFER

eric@screaz.com

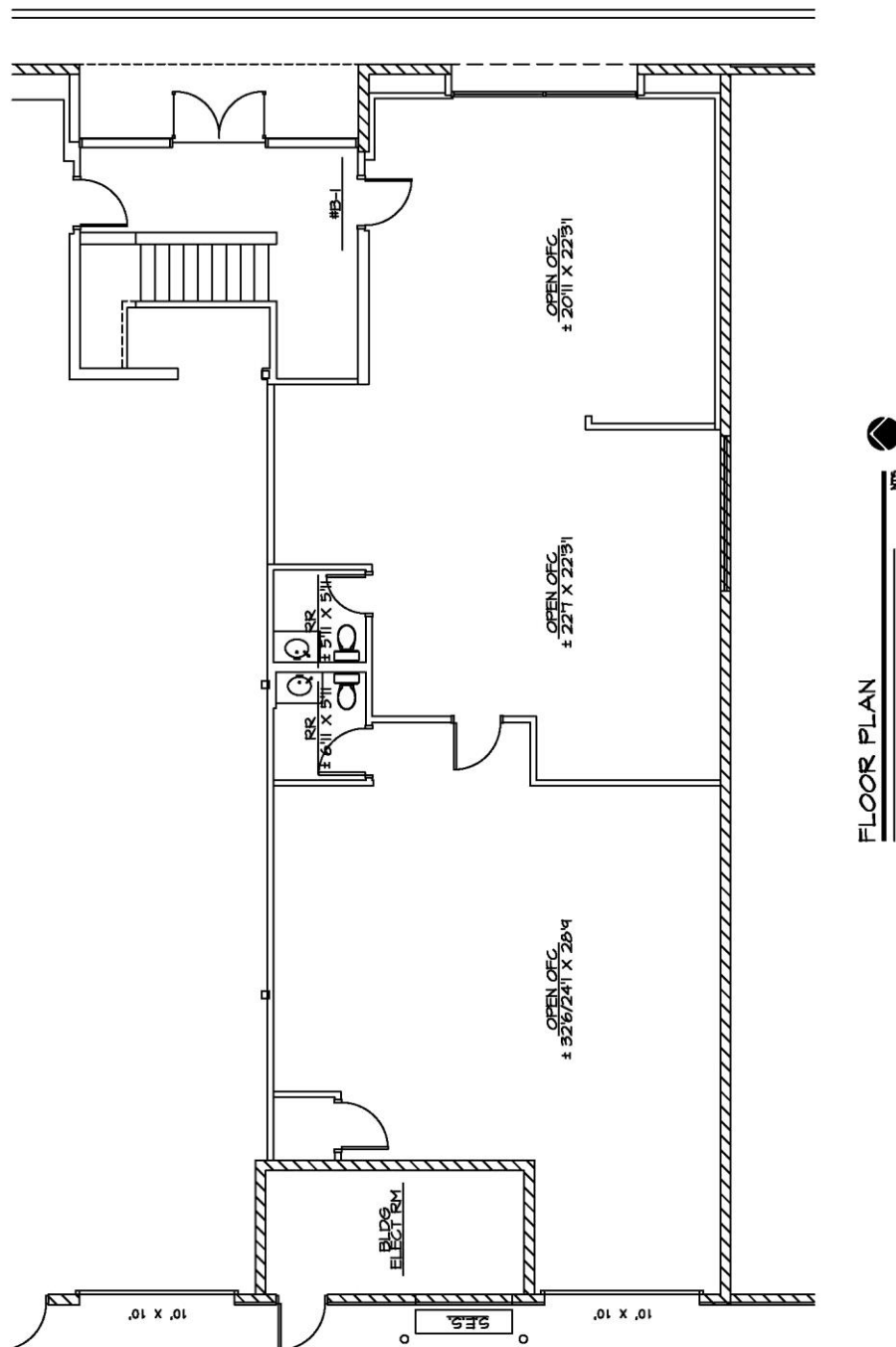
Cell: 602.525.0713

7641 E. Gray Rd., Suite A2
Scottsdale, AZ 85260

Office: 480.998.5025
Fax: 480.951.2493



**7641 E Gray Rd
Suite B1**



FLOOR PLAN

CONTACT:

ERIC SCHAEFER

eric@screaz.com

Cell: 602.525.0713

**7641 E. Gray Rd., Suite A2
Scottsdale, AZ 85260**

Office:

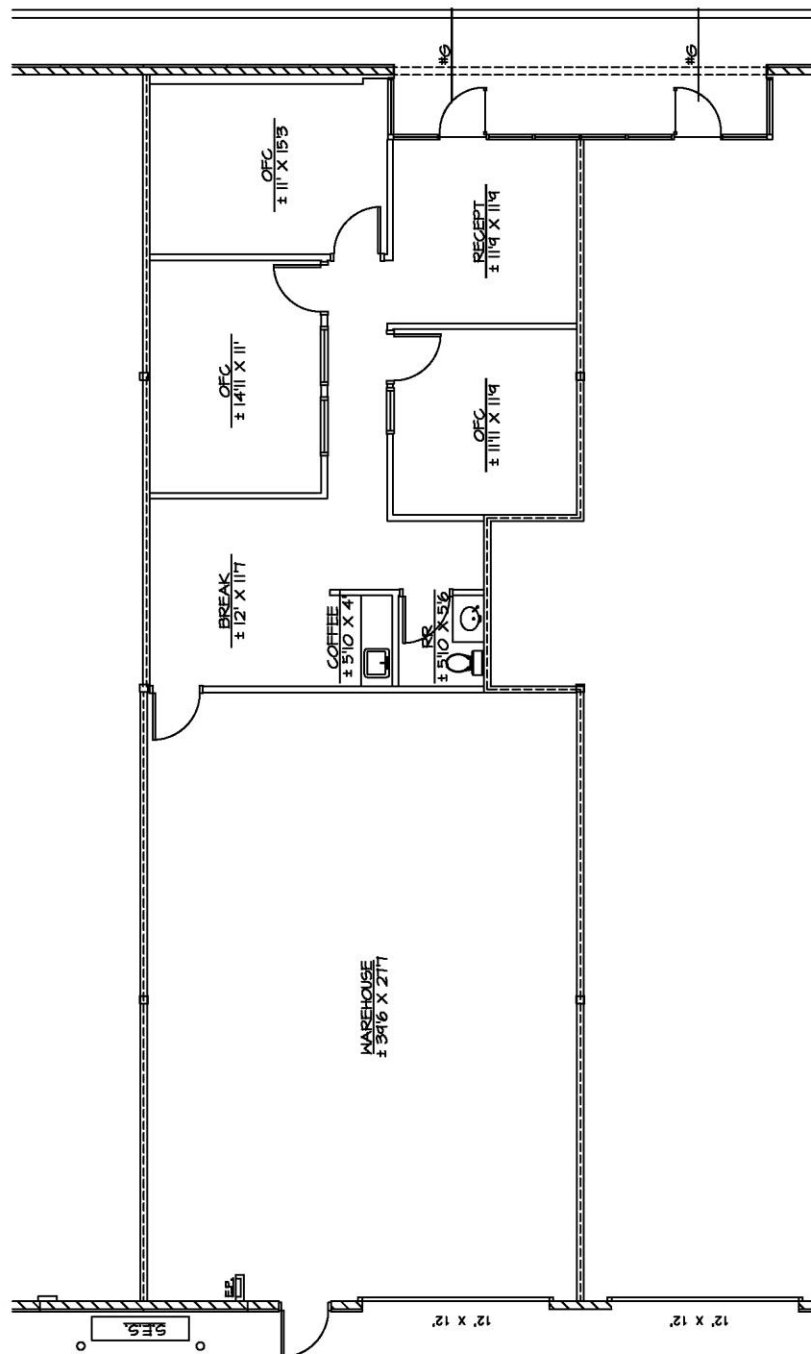
480.998.5025

Fax:

480.951.2493



**7641 E Gray Rd
Suite G**




N
FLOOR PLAN

CONTACT:

ERIC SCHAEFER

eric@screaz.com

Cell: 602.525.0713

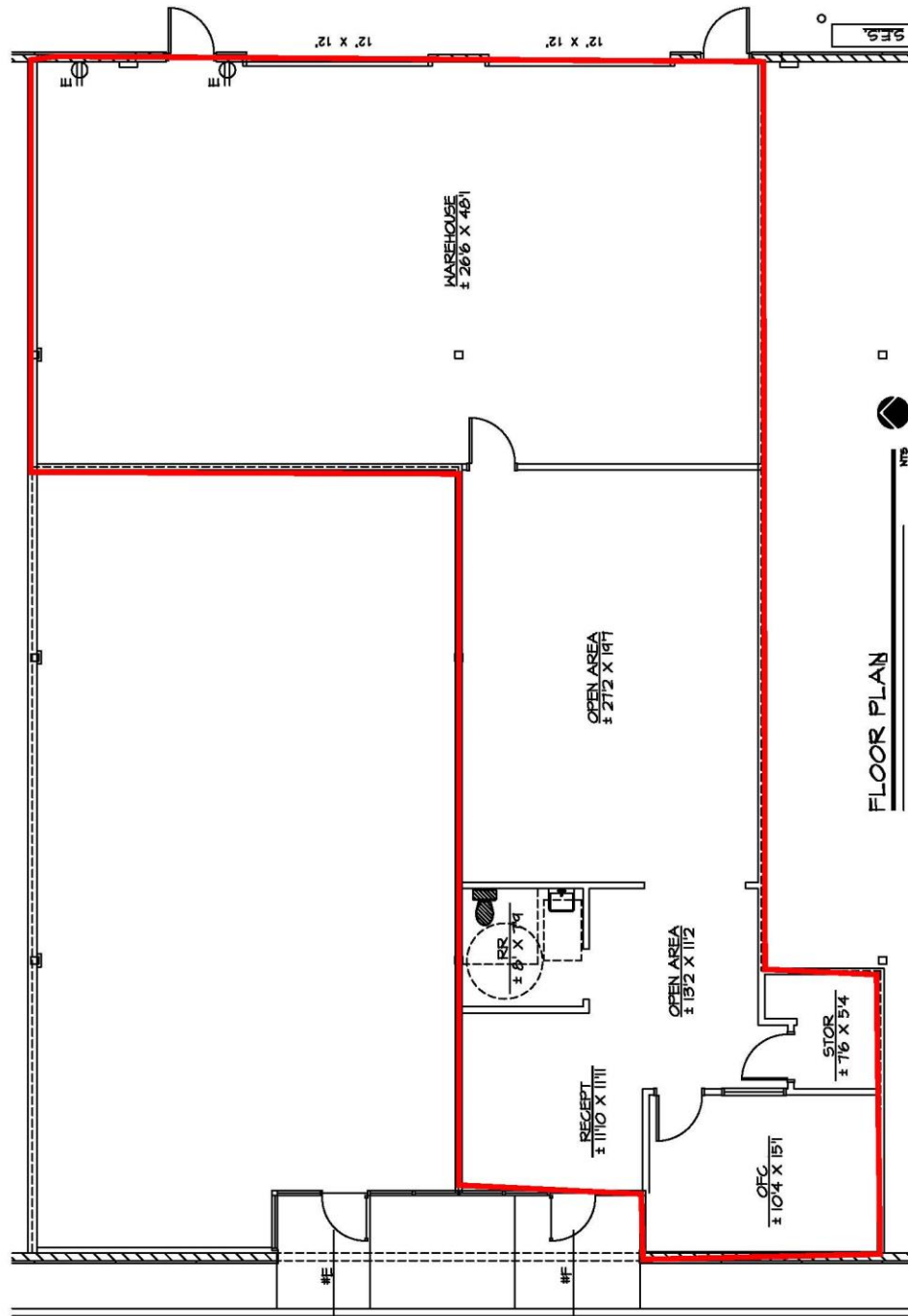
**7641 E. Gray Rd., Suite A2
Scottsdale, AZ 85260**

**Office:
Fax:**

**480.998.5025
480.951.2493**



**7621 E Gray Rd
Suite F**



CONTACT:

ERIC SCHAEFER

eric@screaz.com

Cell: 602.525.0713

**7641 E. Gray Rd., Suite A2
Scottsdale, AZ 85260**

Office:

480.998.5025

Fax:

480.951.2493