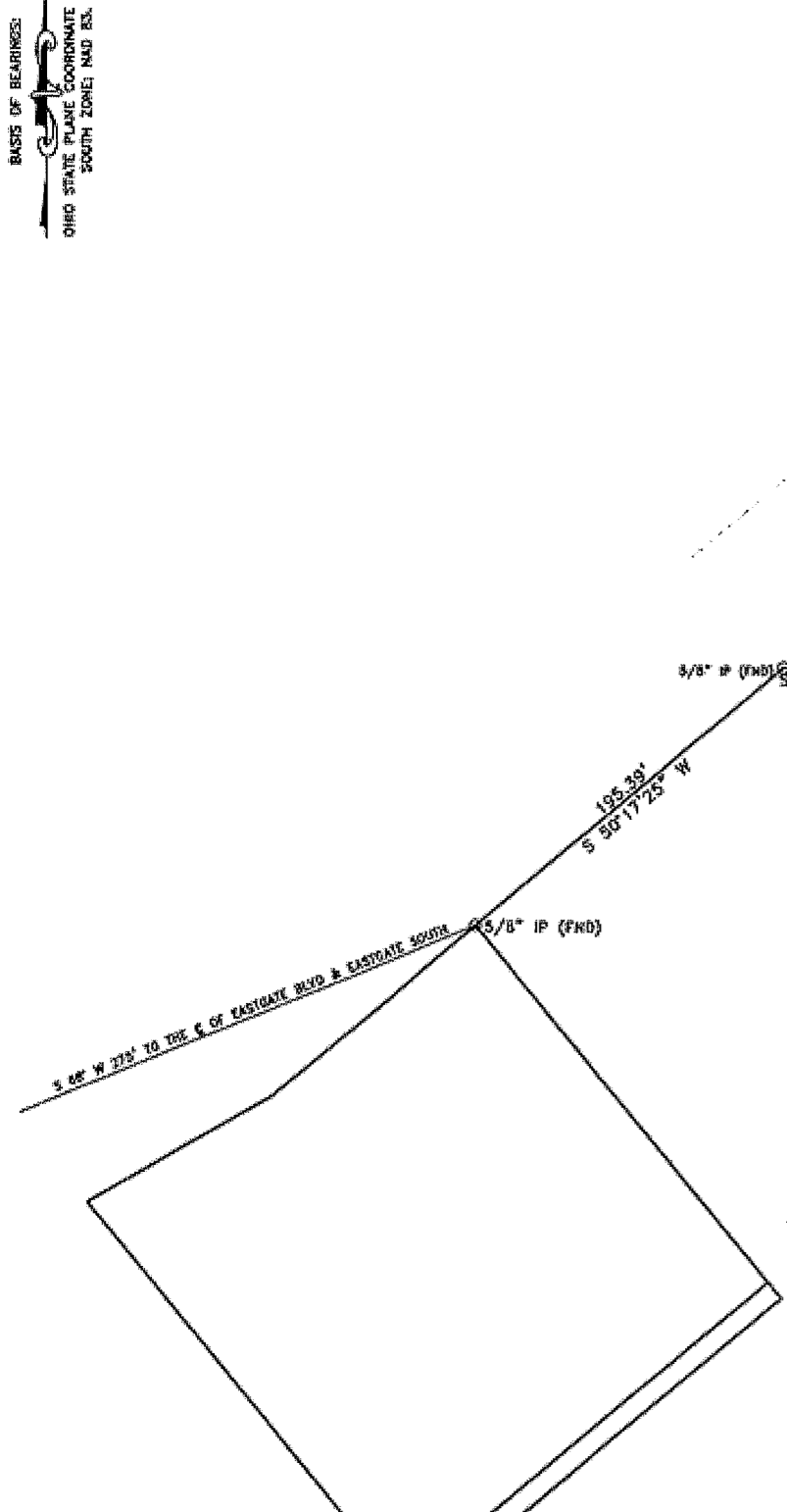


TL⁹².0335

BASIS OF BEARINGS:
OHIO STATE PLANE COORDINATE SYSTEM
SOUTH ZONE 174D NS.



DELTA=26°23'15"
R=670.00'
L=308.57'
CH=S 68°30'49" E
305.85'

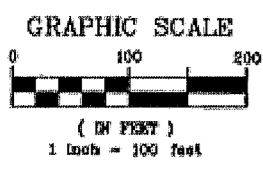
CLERMONT COUNTY BOARD OF COMMISSIONERS
41-31-050-140
DB 719 PG 283
3.348 ACRES
(180.)

3.348 ACRES
0.472 ACRES
3.820 ACRES

0.472 ACRES
(181.)

MAY 11 2006
41-31-050-181.
M/T of F
41-31-050-180.
32 EAST, LLC
41-31-050-180
OR 2492 PG 589
TL82-43

CINCINNATI EASTGATE WILSON 2, LLC, et al
41-31-050-148
OR 1969 PG 228
22N-180



3.820 ACRES VACATED, 4-1-18
CLERMONT COUNTY BOARD OF COMMISSIONERS
RESOLUTION 38-18
JOURNAL #311

PREPARED BY
Craig A. Risner
CRAIG RISNER, P.S.
DEPUTY SURVEYOR
CLERMONT COUNTY ENGINEER'S OFFICE
OHIO REG. No. 5-8024



SURVEY PLAT
FOR CLERMONT COUNTY JOB No. UN-21-14
EASTGATE BOULEVARD
MATHEWS MILITARY SURVEY 1138
UNION TOWNSHIP
CLERMONT COUNTY, OHIO
SCALE: 1"=50' DECEMBER, 2014

SURVEY PLAT

CREATED BY
CRAIG RISNER
DATE
04/2015

EASTGATE BOULEVARD

Clermont County Engineer's Office
2381 Clermont Center Drive
Batavia, Ohio 45103

