



For Lease | Industrial

21170, 21176 & 21182 Centre Pointe Pkwy
Santa Clarita, CA 91350



John Erickson
License No. 00977578
661.253.5202
John.Erickson@colliers.com

Christopher Erickson
License No. 01966495
661.253.5207
Christopher.Erickson@colliers.com

Cole Taylor
License No. 02042569
661.253.5271
Cole.Taylor@colliers.com

Colliers
6324 Canoga Ave
Suite 100
Woodland Hills, CA 91367
www.colliers.com



	SF	Rate/SF	Available
21170 - Unit 200 (Sublease) <i>(Sublease to March 31, 2028)</i>	2,423	\$1.41 + CAM	Immediately
21182 - Unit 120	4,461	\$1.40 + CAM	Immediately

- Functional layout with minimal office
- 16' clearance
- Ground level loading door (10' x 12')
- Convenient access to Highway 14

* CAM Fee is approximately \$0.25 PSF

Floor Plan

21182 - Unit 120

4,461 SF

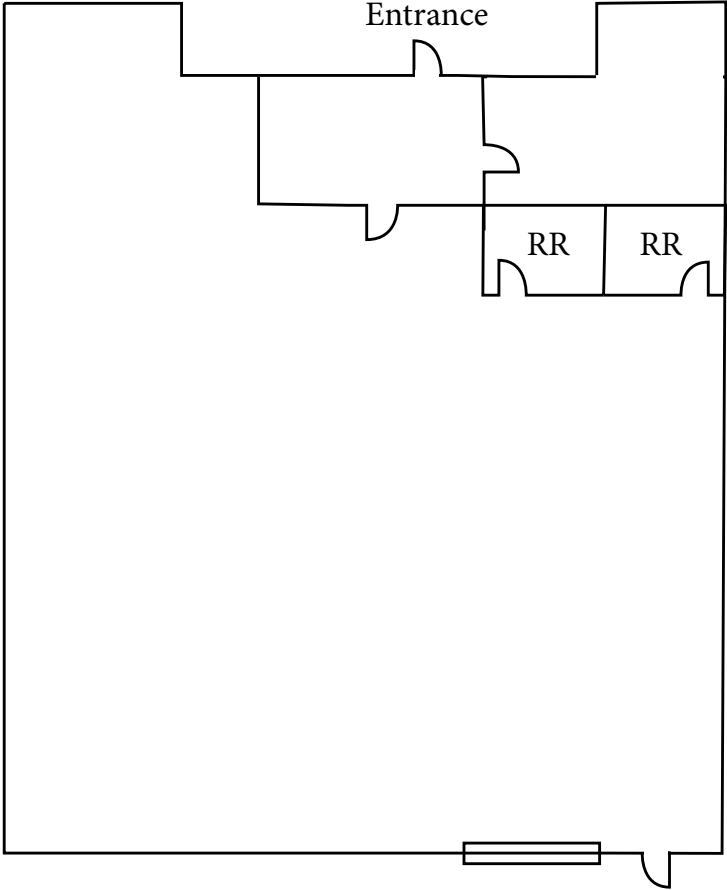


Photo Gallery





1 MILE



















SUBJECT





























FOR MORE INFORMATION,
PLEASE CONTACT:

John Erickson
Lic. 00977578
661.253.5202

John.Erickson@Colliers.com

Christopher Erickson
Lic. 01966495
661.253.5207

Christopher.Erickson@Colliers.com

Cole Taylor
Lic. 02042569
661.253.5271
Cole.Taylor@colliers.com



Colliers

6324 Canoga Avenue
Suite 100
Woodland Hills, CA 91367
www.colliers.com



This document has been prepared by Colliers International for advertising and general information only. Colliers International makes no guarantees, representations or warranties of any kind, expressed or implied, regarding the information including, but not limited to, warranties of content, accuracy and reliability. Any interested party should undertake their own inquiries as to the accuracy of the information. Colliers International excludes unequivocally all inferred or implied terms, conditions and warranties arising out of this document and excludes all liability for loss and damages arising there from. This publication is the copyrighted property of Colliers International and/or its licensor(s). ©2026. All rights reserved.

Available SF 4,461 SF

Industrial For Lease - Hold

Building Size 22,746 SF

**Address:**

21182 Centre Pointe Pkwy, Unit 120, Santa Clarita, CA 91350

Cross Streets:

Golden Valley Rd/Centre Pointe Pkwy

2 Offices, 2 Restrooms & Warehouse
 1 GL Door (10'x12')
 16' Clearance
 Functional Layout

Lease Rate/Mo:	\$6,245	Sprinklered:	Yes	Office SF / #:	200 SF
Lease Rate/SF:	\$1.40	Clear Height:	16'	Restrooms:	2
Lease Type:	Industrial Gross / Op. Ex: \$0.25	GL Doors/Dim:	1 / (10'x12')	Office HVAC:	Heat & AC
Available SF:	4,461 SF	DH Doors/Dim:	0	Finished Ofc Mezz:	0 SF
Minimum SF:	4,461 SF	A: 225 V: 120/208 Q: 3 W: 4		Include In Available:	No
Prop Lot Size:	POL	Construction Type:	TILT UP	Unfinished Mezz:	0 SF
Term:	2-3 Years	Const Status/Year Blt:	Existing / 2006	Include In Available:	No
Sale Price:	NFS	Whse HVAC:	No	Possession:	03/01/2026
Sale Price/SF:	NFS	Parking Spaces: 8 / Ratio:	1.8:1	Vacant:	No
Taxes:	No	Rail Service:	No	To Show:	Call broker
Yard:	BP	Specific Use:	Warehouse/Office	Market/Submarket:	Santa Clarita
Zoning:				APN#:	2836-068-008
Listing Company:	Colliers				
Agents:	Christopher Erickson				
Listing #:	44329029				
Notes:	Lessee to verify all information.				
		Listing Date:	02/12/2026	FTCF:	CB250N000S000

Available SF 2,423 SF

Industrial For Sublease

Building Size 10,373 SF

**Address:**

21170 Centre Pointe Pkwy, Unit 200, Santa Clarita, CA 91350

Cross Streets:

Golden Valley Rd/Centre Pointe Pkwy

Sublease Through 3/31/2028
 Easy access to Highway 14
 Functional Layout
 16' Clearance
 1 Ground Level Loading Door

Lease Rate/Mo:	\$3,416	Sprinklered:	Yes	Office SF / #:	200 SF
Lease Rate/SF:	\$1.41	Clear Height:	16'	Restrooms:	2
Lease Type:	Gross / Op. Ex: \$0.25	GL Doors/Dim:	1	Office HVAC:	Heat & AC
Available SF:	2,423 SF	DH Doors/Dim:	0	Finished Ofc Mezz:	0 SF
Minimum SF:	2,423 SF	A: V: O: W:		Include In Available:	No
Prop Lot Size:	POL	Construction Type:	TILT UP	Unfinished Mezz:	0 SF
Term:	Sublease Through 3/31/2028	Const Status/Year Blt:	Existing / 2006	Include In Available:	Yes
Sale Price:	NFS	Whse HVAC:	No	Possession:	30 Days
Sale Price/SF:	NFS	Parking Spaces: 4 / Ratio:	1.7:1	Vacant:	No
Taxes:	No	Rail Service:	No	To Show:	Call broker
Yard:	BP	Specific Use:	Warehouse/Office	Market/Submarket:	Santa Clarita
Zoning:				APN#:	2836-068-008
Listing Company:	Colliers				
Agents:	John Erickson				
Listing #:	44844532				
Notes:	Sublessee to verify all information.				

FTCF: CB250N000S000

Listing Date: 05/08/2026