

MAPLEWOOD, NJ

1545 SPRINGFIELD AVENUE, MAPLEWOOD, NJ 07040



OFFERING SUMMARY

Available SF: 3,864 SF

Lease Rate: Call For Details

NEIGHBORING TENANTS



PROPERTY OVERVIEW

3,864 SF Freestanding QuickChek Building

PROPERTY HIGHLIGHTS

- Available in 60-90 Days
- Located at Corner of Springfield & Boyden
- Great for Bank, Boutique Restaurant, Cannabis, Fitness
- Excellent Visibility at Signalized Intersection
- 23 Surface Parking Spaces
- Nearby to Maplewood Train Station w/ Bus Stop In Front of Building
- Convenient Access to Route 78, Garden State Parkway, Vauxhall Road, Route 22 and the NJ Turnpike

FOR MORE INFORMATION CONTACT:

CHRISTOPHER CONWAY

201.703.9700 x143

cconway@thegoldsteingroup.com

Licensed Real Estate Broker | 45 EISENHOWER DRIVE | SUITE 246 | PARAMUS, NJ 07652

All information is from sources deemed reliable and is submitted subject to errors, omissions, change of price, terms, rental, prior sale and withdrawal without notice.



THEGOLDSTEINGROUP.COM

MAPLEWOOD, NJ

1545 SPRINGFIELD AVENUE, MAPLEWOOD, NJ 07040



FOR MORE INFORMATION CONTACT:

CHRISTOPHER CONWAY

201.703.9700 x143

cconway@thegoldsteingroup.com

Licensed Real Estate Broker | 45 EISENHOWER DRIVE | SUITE 246 | PARAMUS, NJ 07652

All information is from sources deemed reliable and is submitted subject to errors, omissions, change of price, terms, rental, prior sale and withdrawal without notice.



THEGOLDSTEINGROUP.COM

MAPLEWOOD, NJ

1545 SPRINGFIELD AVENUE, MAPLEWOOD, NJ 07040



FOR MORE INFORMATION CONTACT:

CHRISTOPHER CONWAY

201.703.9700 x143

cconway@thegoldsteingroup.com

Licensed Real Estate Broker | 45 EISENHOWER DRIVE | SUITE 246 | PARAMUS, NJ 07652

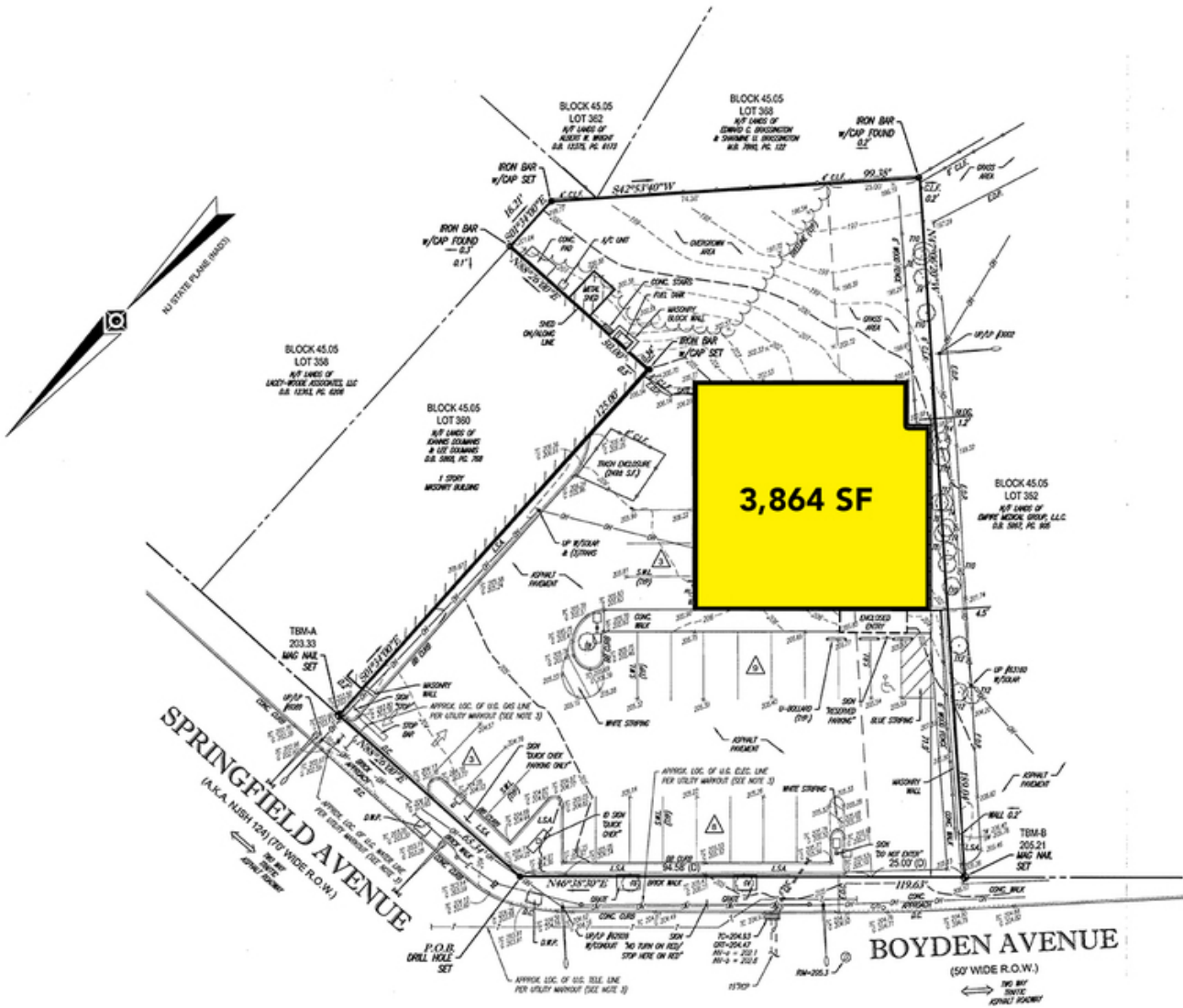
All information is from sources deemed reliable and is submitted subject to errors, omissions, change of price, terms, rental, prior sale and withdrawal without notice.



THEGOLDSTEINGROUP.COM

MAPLEWOOD, NJ

1545 SPRINGFIELD AVENUE, MAPLEWOOD, NJ 07040



FOR MORE INFORMATION CONTACT:

CHRISTOPHER CONWAY

201.703.9700 x143

cconway@thegoldsteingroup.com

Licensed Real Estate Broker | 45 EISENHOWER DRIVE | SUITE 246 | PARAMUS, NJ 07652

All information is from sources deemed reliable and is submitted subject to errors, omissions, change of price, terms, rental, prior sale and withdrawal without notice.



THEGOLDSTEINGROUP.COM

MAPLEWOOD, NJ

1545 SPRINGFIELD AVENUE, MAPLEWOOD, NJ 07040



FOR MORE INFORMATION CONTACT:

CHRISTOPHER CONWAY

201.703.9700 x143
cconway@thegoldsteingroup.com

Licensed Real Estate Broker | 45 EISENHOWER DRIVE | SUITE 246 | PARAMUS, NJ 07652

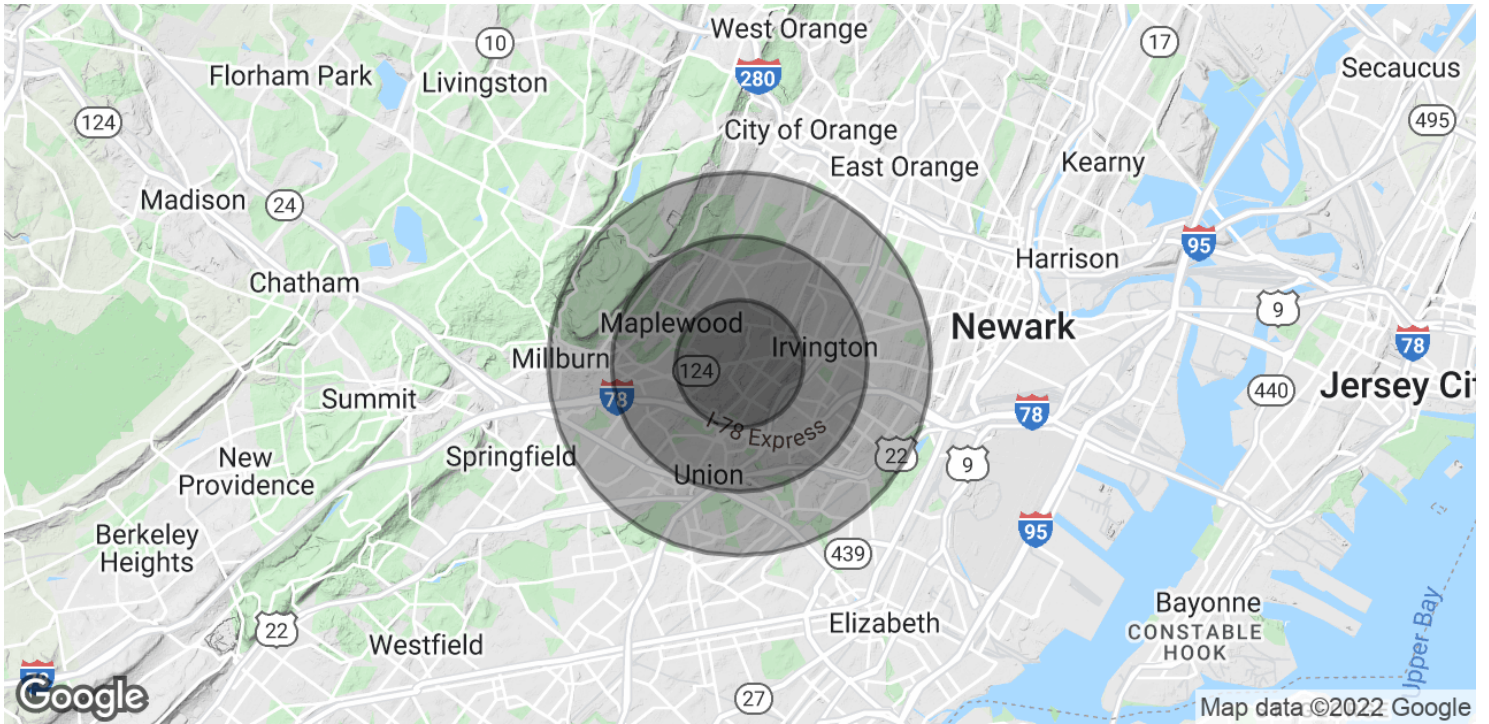
All information is from sources deemed reliable and is submitted subject to errors, omissions, change of price, terms, rental, prior sale and withdrawal without notice.



THEGOLDSTEINGROUP.COM

MAPLEWOOD, NJ

1545 SPRINGFIELD AVENUE, MAPLEWOOD, NJ 07040



POPULATION	1 MILE	2 MILES	3 MILES
Total Population	38,763	139,215	286,977
Average Age	36.0	34.9	35.8
Average Age (Male)	33.6	33.0	33.7
Average Age (Female)	38.4	36.3	37.3
HOUSEHOLDS & INCOME	1 MILE	2 MILES	3 MILES
Total Households	13,593	48,162	100,854
# of Persons per HH	2.9	2.9	2.8
Average HH Income	\$78,499	\$77,796	\$78,466
Average House Value	\$381,355	\$395,306	\$405,588

* Demographic data derived from 2010 US Census

FOR MORE INFORMATION CONTACT:

CHRISTOPHER CONWAY

201.703.9700 x143
cconway@thegoldsteingroup.com



Licensed Real Estate Broker | 45 EISENHOWER DRIVE | SUITE 246 | PARAMUS, NJ 07652

THEGOLDSTEINGROUP.COM

All information is from sources deemed reliable and is submitted subject to errors, omissions, change of price, terms, rental, prior sale and withdrawal without notice.