

107 S. CHARLES STREET
WHITE CLOUD, MICHIGAN

RETAIL FOR SALE
2,539 Square Feet Available



**SIGNATURE
ASSOCIATES**
KNOW SIGNATURE | KNOW RESULTS

WHITE CLOUD TOBACCO



PROPERTY FEATURES

- 2,539 total square feet
- Located on 0.41 acres
- Zoned C-3
- Built in 1970's; remodeled in 2021
- Security system in place
- Sale Price: ~~\$199,000~~ \$150,000

Comments: Free-Standing smoke shop along busy M-20/M-37/S Charles Street. Space is split into two (2) units. One is a long-standing smoke shop; full turn-key. Second suite is a vacant suite; needs to be spruced up. Ample parking in back. Great opportunity to start a business and make rental income!



For more information, please contact:

JOE RIZQALLAH
(616) 822 6310
jrizzqallah@signatureassociates.com

PAMELA K. SCHWALLIER
(616) 490 4630
pam@greatlakessignatureproperties.com

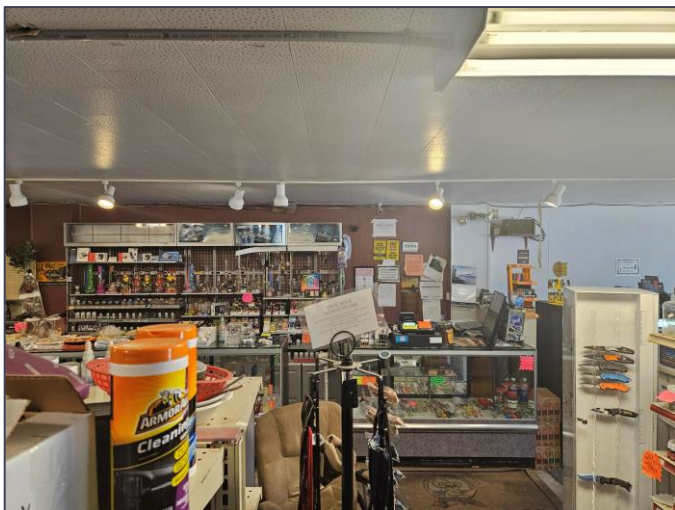
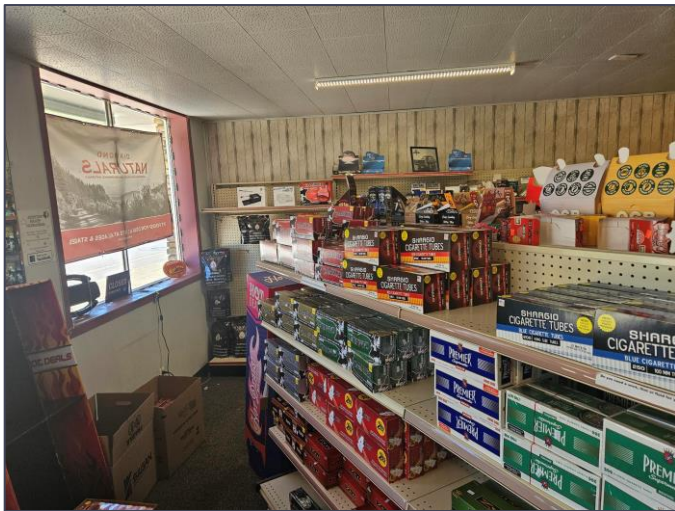
SIGNATURE ASSOCIATES
1188 East Paris Ave SE, Suite 220
Grand Rapids, MI 49546
www.signatureassociates.com

107 S. Charles Street – White Cloud, Michigan

Retail for Sale

2,539
Square Feet
AVAILABLE

Additional Photos



For more information, please contact:

JOE RIZQALLAH

(616) 822 6310

jrizqallah@signatureassociates.com

PAMELA K. SCHWALLIER

(616) 490 4630

pam@greatlakessignatureproperties.com

SIGNATURE ASSOCIATES

1188 East Paris Ave SE, Suite 220

Grand Rapids, MI 49546

www.signatureassociates.com

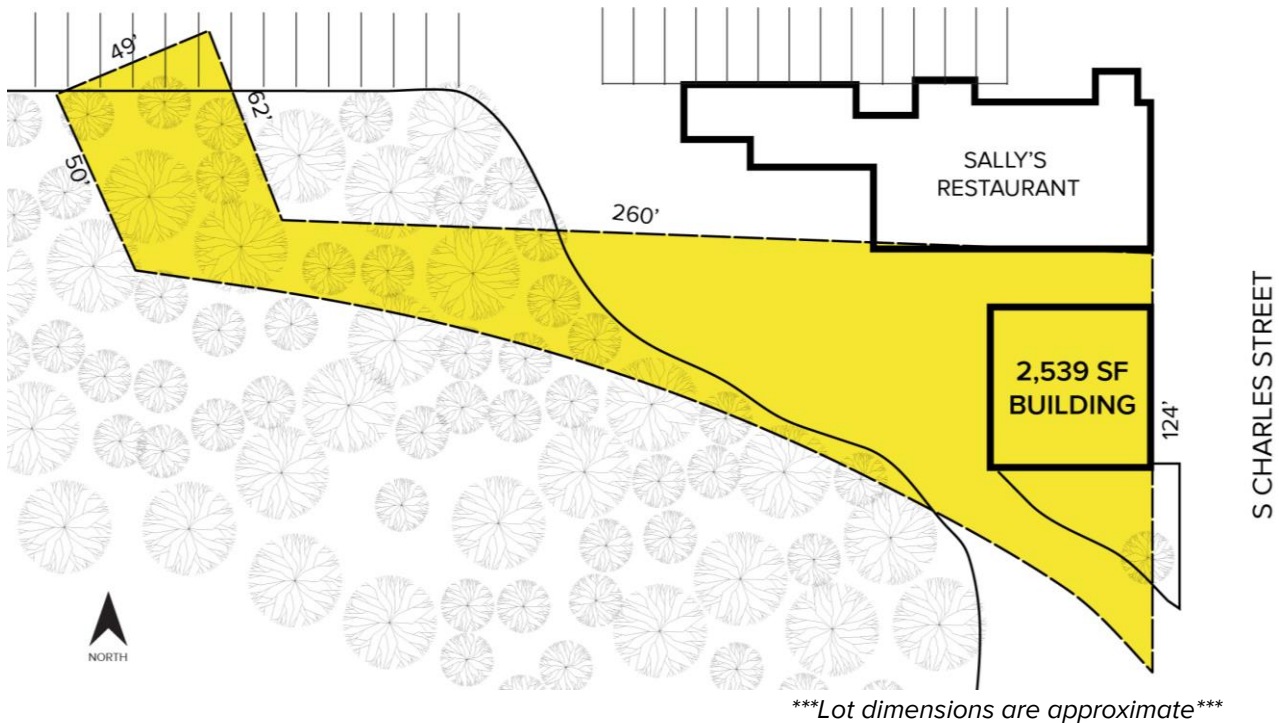
Information is subject to verification and no liability for errors or omissions is assumed. Price is subject to change and listing withdrawal.

107 S. Charles Street – White Cloud, Michigan

Retail for Sale

2,539
Square Feet
AVAILABLE

Site Plan



Aerial



For more information, please contact:

JOE RIZQALLAH

(616) 822 6310

jrizqallah@signatureassociates.com

PAMELA K. SCHWALLIER

(616) 490 4630

pam@greatlakessignatureproperties.com

SIGNATURE ASSOCIATES

1188 East Paris Ave SE, Suite 220

Grand Rapids, MI 49546

www.signatureassociates.com

Information is subject to verification and no liability for errors or omissions is assumed. Price is subject to change and listing withdrawal.