

1590 Paseo San Luis

Sierra Vista, AZ 85635



Area Description

- + High Visibility from Highway 92
- + Easily accessible from the corner of Snyder Blvd and Paseo San Luis
- + Located along the health and wellness services corridor
- + Close proximity to major landmarks like Canyon Vista Medical Center and numerous other retail establishments

Property Description

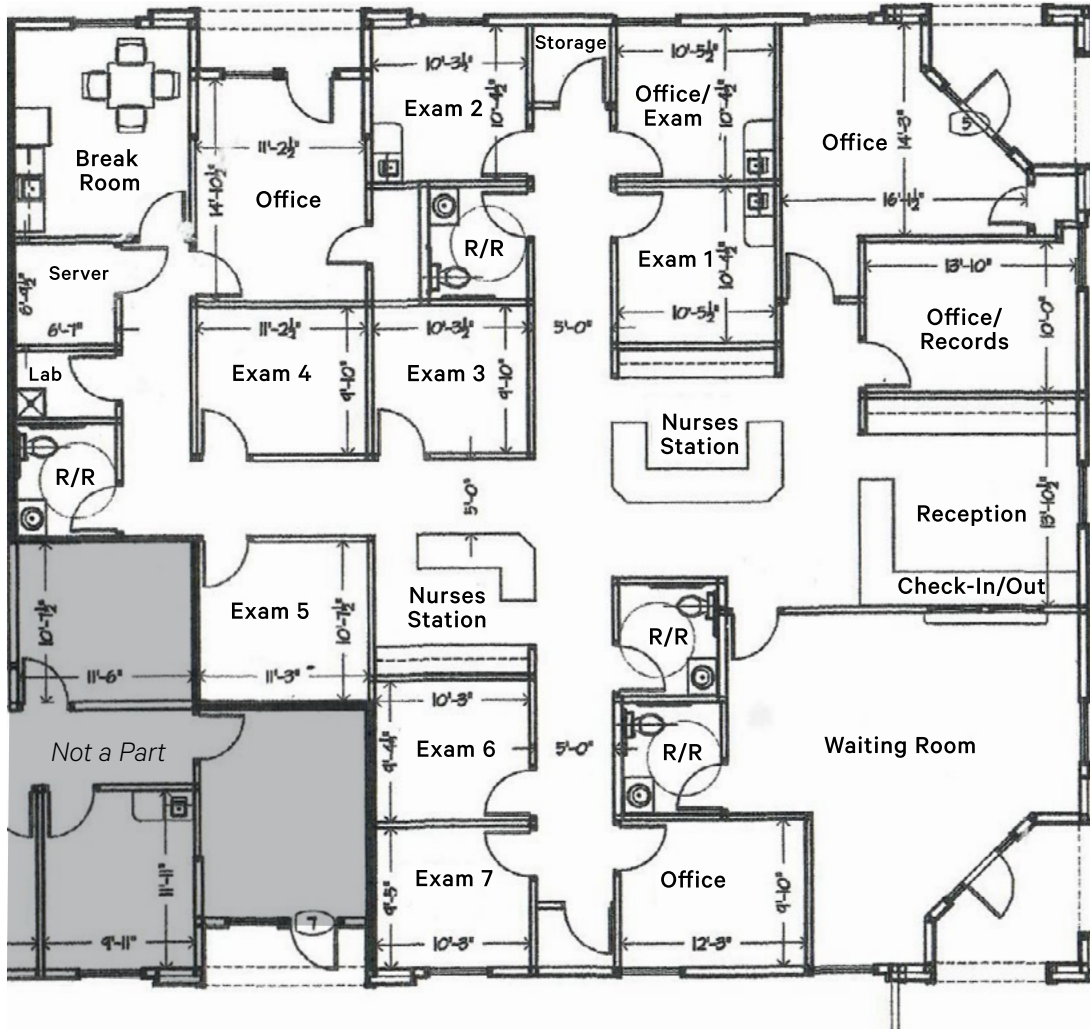
- + High-quality medical office building
- + Efficient layout with plumbed medical exam rooms and nurses stations
- + Attractive and well-maintained property built in 2010

Contact Us

Bruce Suppes
Vice President
+1 520 323 5155
bruce.suppes@cbre.com

Floor Plan

±6,816 SF



Property Features

Available Space	±6,816 SF
Sublease Rate	\$14.00/SF NNN
Operating Expenses	\$4.25/SF (est)
Sublease Expiration	July 21, 2032
Year Built	2010
Parking Ratio	Abundant; 7.34/1,000

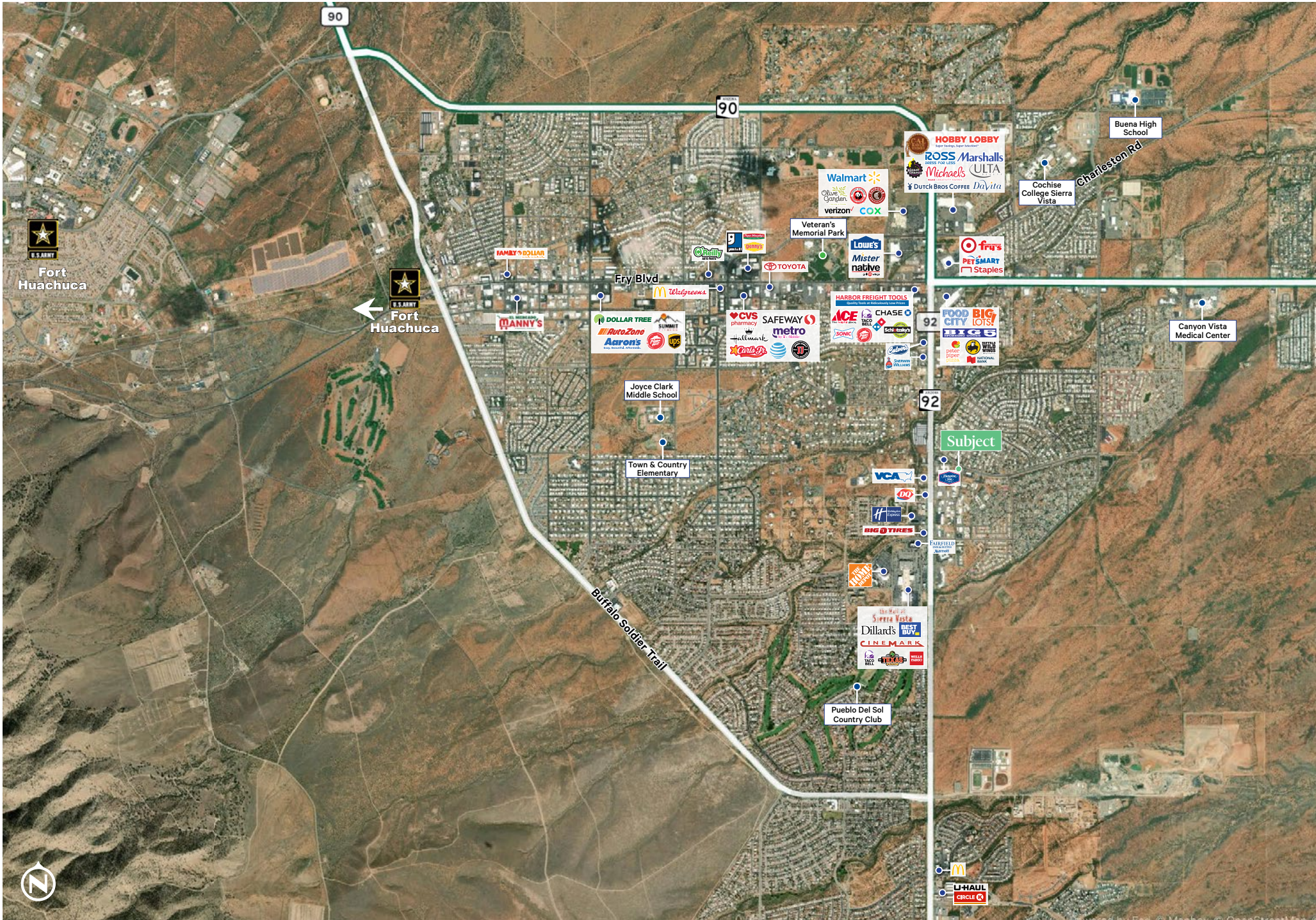


1590 Paseo San Luis
Sierra Vista | AZ 85635

For Sublease

Property Photos

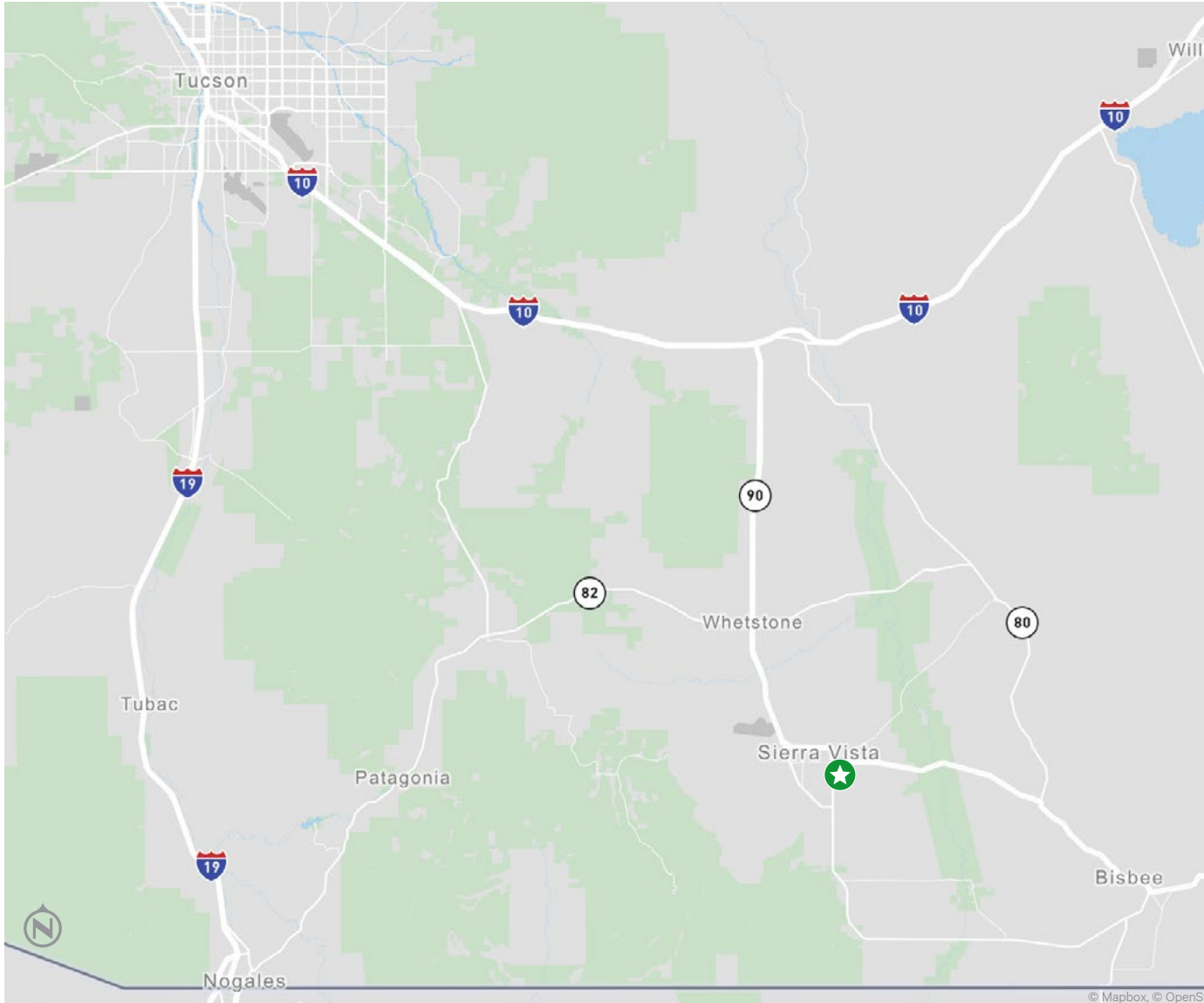




1590 Paseo San Luis

Sierra Vista | AZ 85635

For Sublease



Contact Us

Bruce Suppes

Vice President

+1 520 323 5155

bruce.suppes@cbre.com

© 2026 CBRE, Inc. All rights reserved. This information has been obtained from sources believed reliable, but has not been verified for accuracy or completeness. You should conduct a careful, independent investigation of the property and verify all information. Any reliance on this information is solely at your own risk. CBRE and the CBRE logo are service marks of CBRE, Inc. All other marks displayed on this document are the property of their respective owners, and the use of such logos does not imply any affiliation with or endorsement of CBRE. Photos herein are the property of their respective owners. Use of these images without the express written consent of the owner is prohibited.

CBRE