

# LINDON STATE STREET RETAIL

FOR LEASE



## PROPERTY DETAILS

677 N STATE ST, LINDON, UT 84042

- Price: \$24/SF NNN
- Available July 1, 2024
- Prime State Street location
- 1,500 SF of Retail Space Available
- 2nd Gen Restaurant
- Walmart Anchored Center
- Nearly 35,000 cars per day on State Street

## SURROUNDING TENANTS



## 2023 DEMOS



### EST. POPULATION

1 MILE » 10,710  
3 MILE » 75,201  
5 MILE » 177,116



### EST. HOUSEHOLDS

1 MILE » 3,261  
3 MILE » 22,702  
5 MILE » 53,476



### EST. MEDIAN HH INCOME

1 MILE » \$81,988  
3 MILE » \$92,500  
5 MILE » \$92,839



**MOUNTAIN WEST**  
COMMERCIAL REAL ESTATE

### JEFFERY SORENSON

jsorenson@mwcre.com  
direct 636.219.5642  
[View Profile](#)

### CADE THOMAS

cthomas@mwcre.com  
direct 541.690.5366  
[View Profile](#)

### FUTI TAVANA

ftavana@mwcre.com  
direct 385.355.3188  
[View Profile](#)

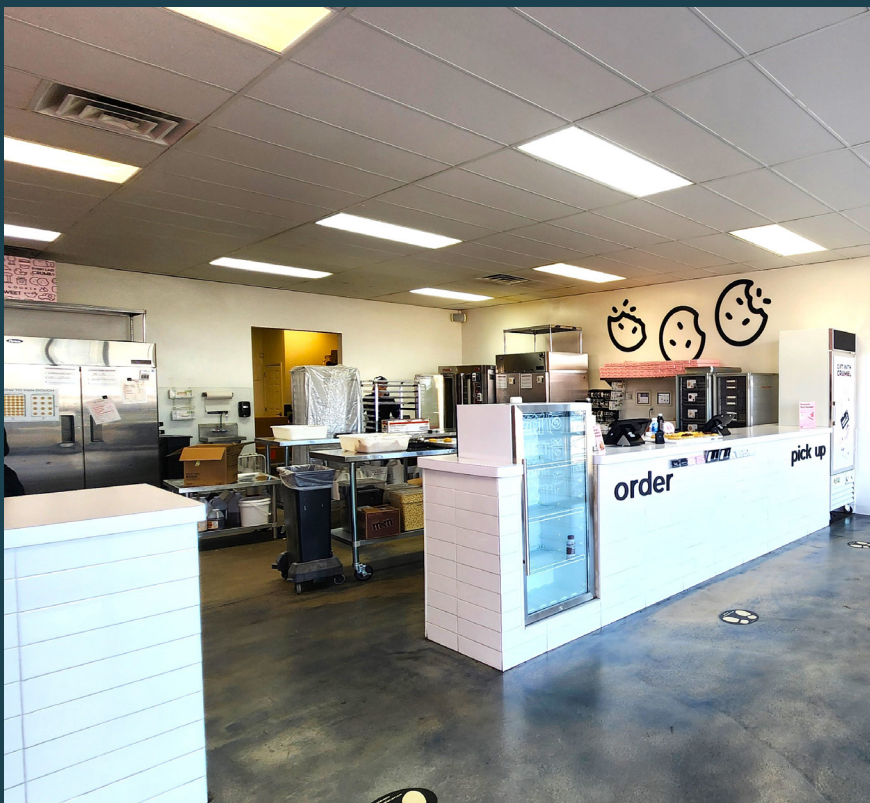
### DANNY SANDER

dsander@mwcre.com  
direct 717.512.4195  
[View Profile](#)

**FULL SERVICE**  
**COMMERCIAL REAL ESTATE**

2015 W. Grove Parkway, Suite J  
Pleasant Grove, UT 84062  
Office 385.233-9140  
[www.mwcre.com](http://www.mwcre.com)





**MOUNTAIN WEST**  
COMMERCIAL REAL ESTATE

**JEFFERY SORENSON**

jsorenson@mwcre.com

direct 636.219.5642

[View Profile](#)

**CADE THOMAS**

cthomas@mwcre.com

direct 541.690.5366

[View Profile](#)

**FUTI TAVANA**

ftavana@mwcre.com

direct 385.355.3188

[View Profile](#)

**DANNY SANDER**

dsander@mwcre.com

direct 717.512.4195

[View Profile](#)

**FULL SERVICE  
COMMERCIAL REAL ESTATE**

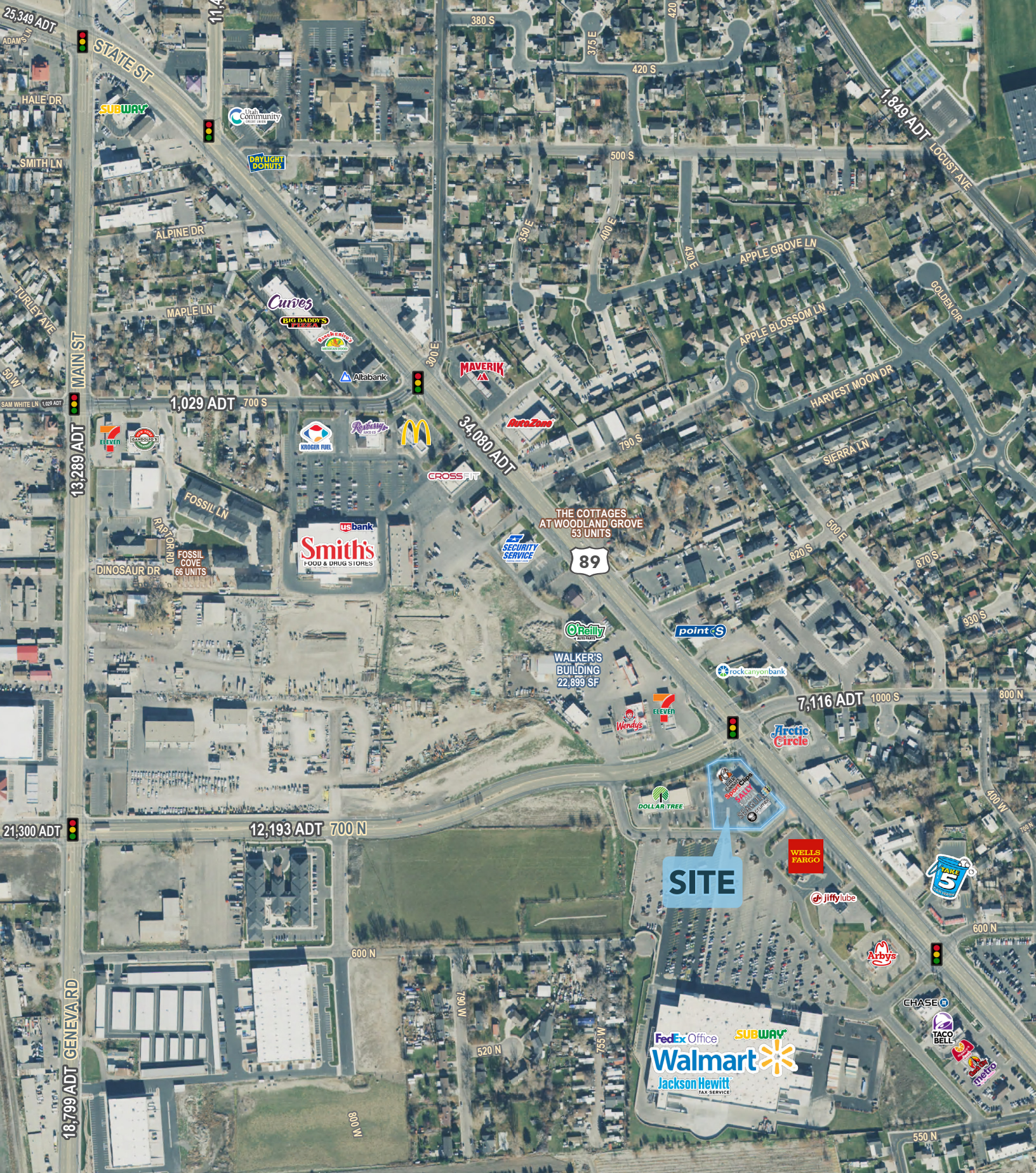
2015 W. Grove Parkway, Suite J

Pleasant Grove, UT 84062

Office 385.233-9140

[www.mwcre.com](http://www.mwcre.com)





**MOUNTAIN WEST**  
COMMERCIAL REAL ESTATE

### JEFFERY SORENSON

jsorenson@mwcre.com  
direct 636.219.5642  
[View Profile](#)

### CADE THOMAS

cthomas@mwcre.com  
direct 541.690.5366  
[View Profile](#)

### FUTI TAVANA

ftavana@mwcre.com  
direct 385.355.3188  
[View Profile](#)

### DANNY SANDER

dsander@mwcre.com  
direct 717.512.4195  
[View Profile](#)

### FULL SERVICE COMMERCIAL REAL ESTATE

2015 W. Grove Parkway, Suite J  
Pleasant Grove, UT 84062  
Office 385.233.9140  
[www.mwcre.com](http://www.mwcre.com)