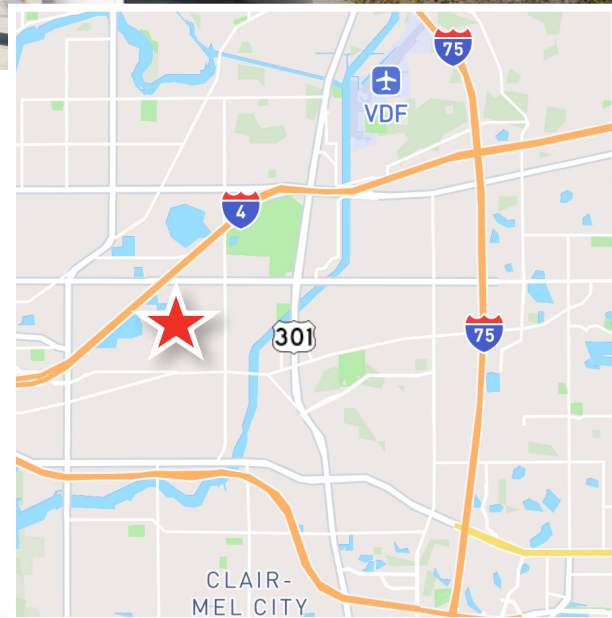


Situated within a premier business park near the intersection of I-4 and Martin Luther King Blvd

Suite 205 - 4,882 SF

- **Sublease Term Ends:** November 30, 2026
- **Sublease Asking Rate:** \$21.00 FS
- **Includes:** 12 Private Offices, Large conference/training room, Break room/kitchen, IT Room, Lab, and Copy Room
- Access to US Hwy 301, I-4, I-75 & I-275
- Only 10 minutes to Downtown Tampa and 20 minutes to Tampa International Airport



Michael F. Coppola
Senior Associate
+1 813 444 0625
michael.coppola@avisonyoung.com

avisonyoung.com

Office Space for Sublease
Suite 205

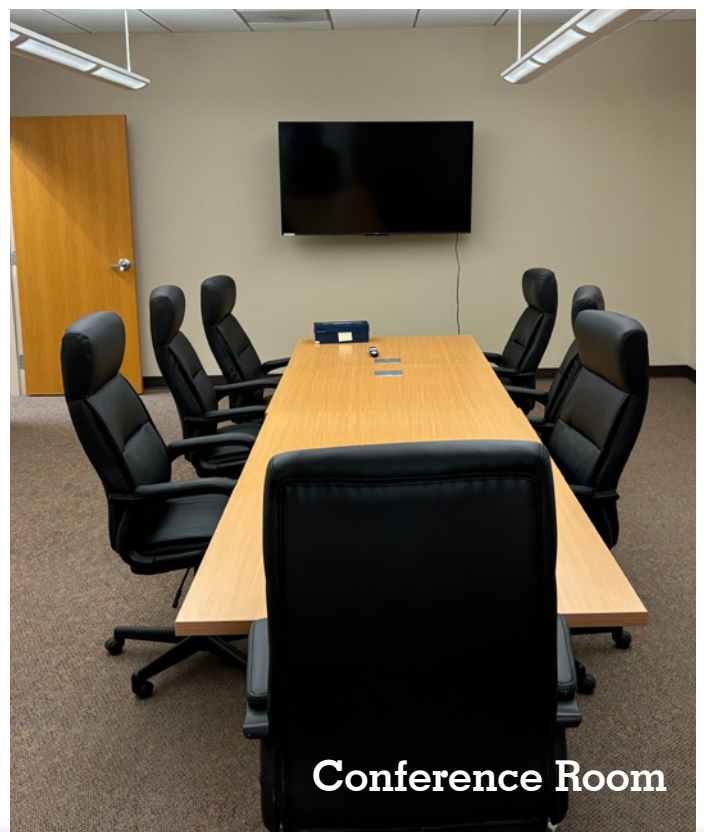
3710 Corporex Park Drive
Tampa, Florida



Private Office with Lake Views



Large Breakroom



Conference Room

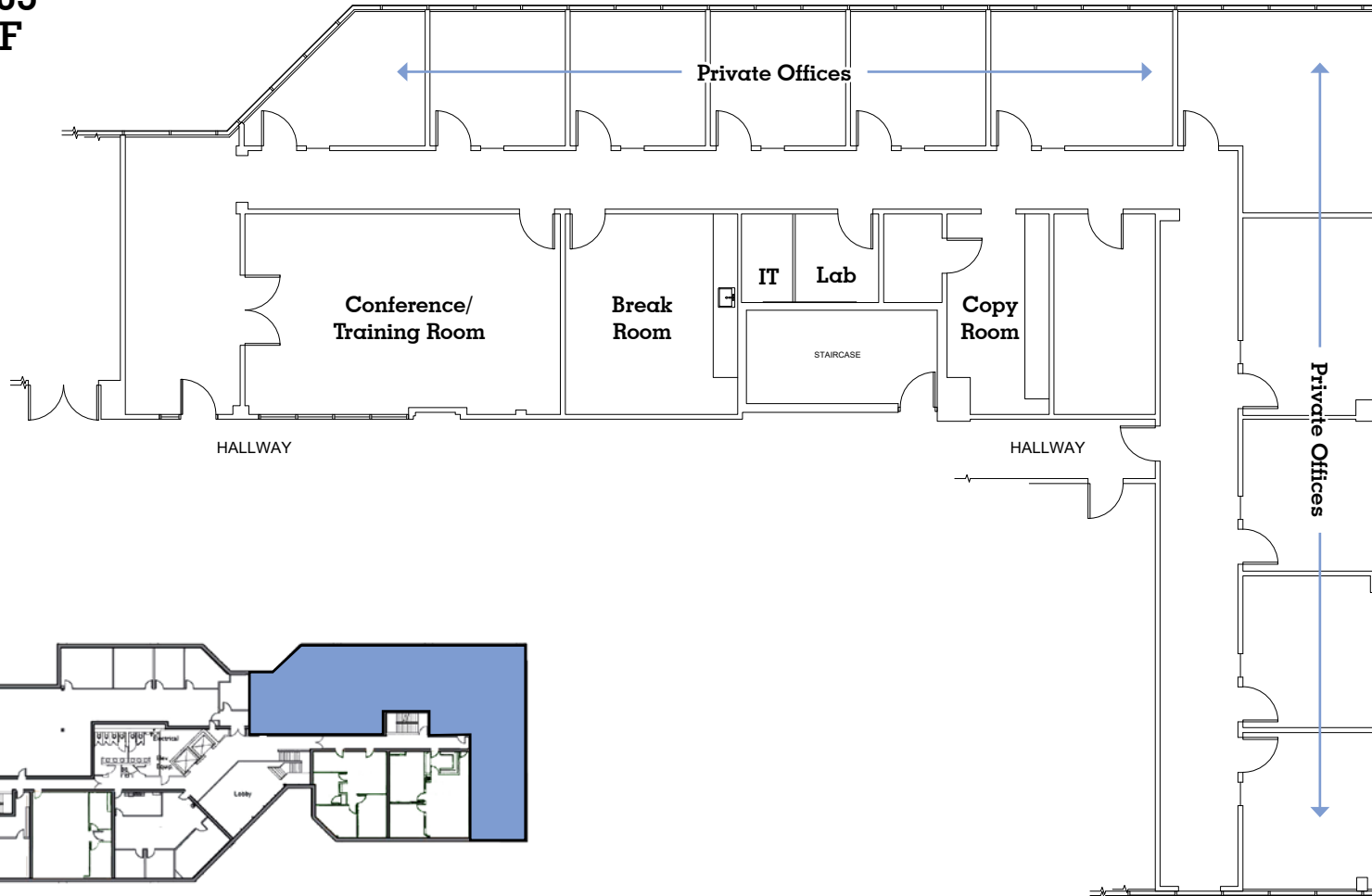
Michael F. Coppola
Senior Associate
+1 813 444 0625
michael.coppola@avisonyoung.com

avisonyoung.com

Office Space for Sublease

3710 Corporex Park Drive
Tampa, Florida

Suite 205
4,882 SF



Michael F. Coppola
Senior Associate
+1 813 444 0625
michael.coppola@avisonyoung.com

avisonyoung.com

