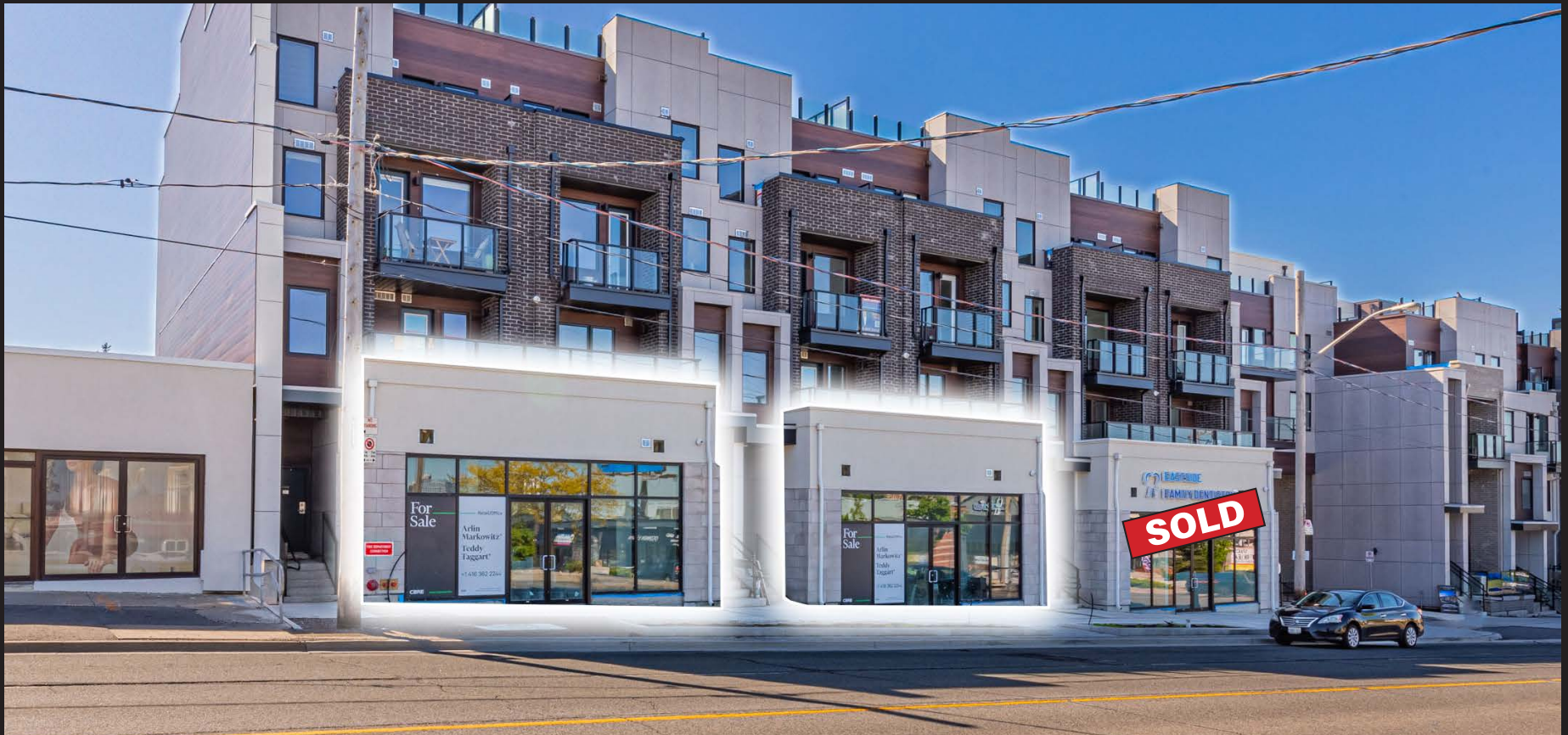


# 1495 & 1503 O'Connor Drive

**Move-In Ready** | Commercial Units for Sale



**RECENTLY COMPLETE! ONLY TWO UNITS REMAINING!**

**CBRE** urban retail team

# 1495 & 1503 O'Connor Drive

## PROPERTY DETAILS

### Address:

1495 & 1503 O'Connor Drive, Toronto

### Occupancy:

Immediately

### Retail Area:

920 sq. ft. per unit

### Condo Fees:

\$4.37 per sq. ft.

### Parking:

Underground parking stalls available at an additional price

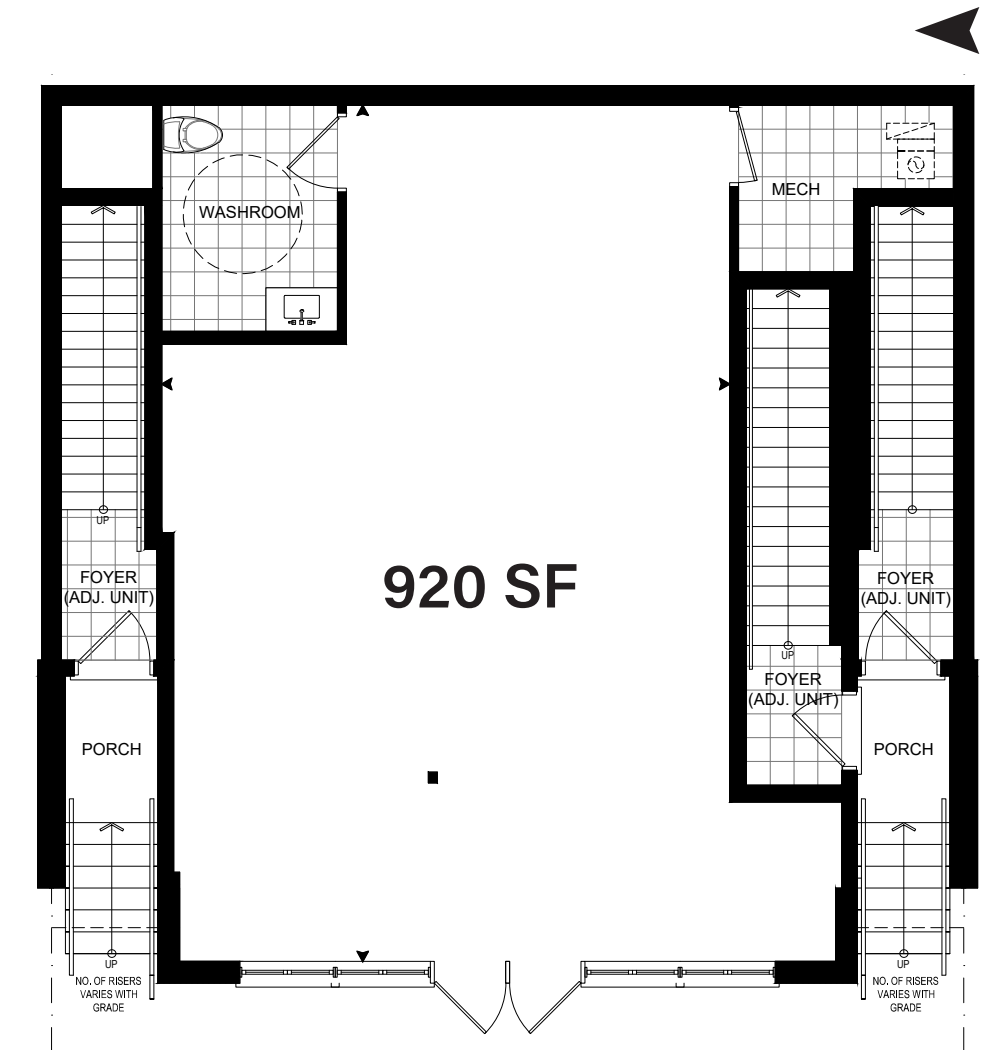
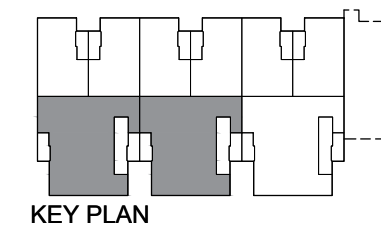
### Asking Price:

\$750,000 per unit

- Two beautiful right-sized commercial units at the base of a brand-new townhome development
- Located in Toronto's East end, within walking distance to the new Crosstown LRT and within a 5-minute drive to the DVP
- Bright and open space with 14.8 ft. ceiling heights
- Very high traffic streetfront location in rapidly growing area

## Floor Plan

1495 & 1503 O'Connor Drive





# Investment Highlights



## **BRAND NEW DEVELOPMENT**

Newly built urban townhomes development by Rise Developments and designed by Guthrie Muscovitch Architects. The development features 52 residential luxury units.



## **EXCELLENT EAST END LOCATION**

Located in Toronto's booming East end, within walking distance to the new Crosstown LRT and a 5-minute drive to the DVP, Eglinton's Golden Mile and the Danforth.



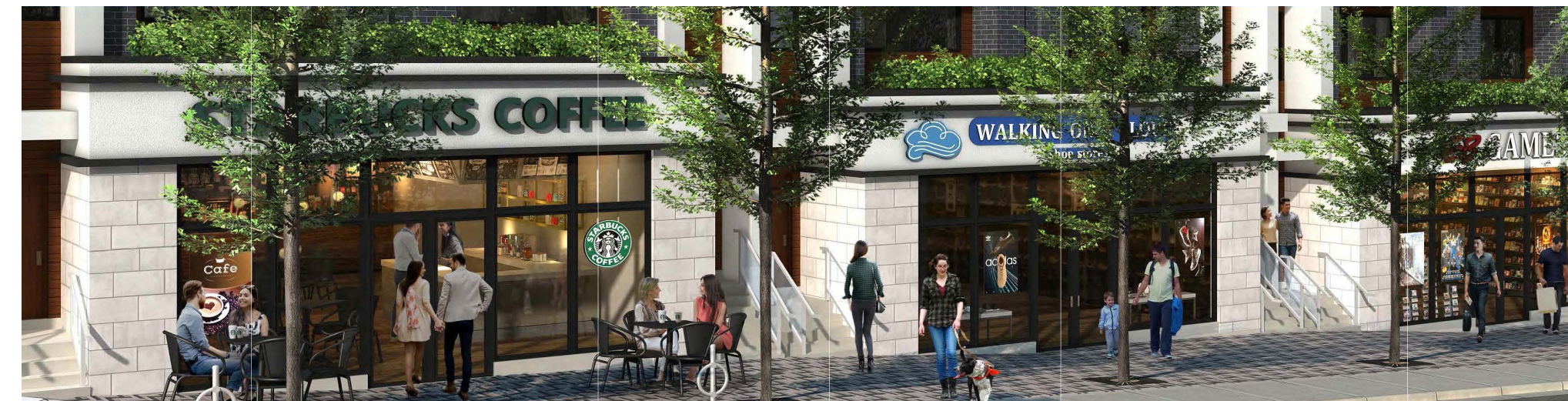
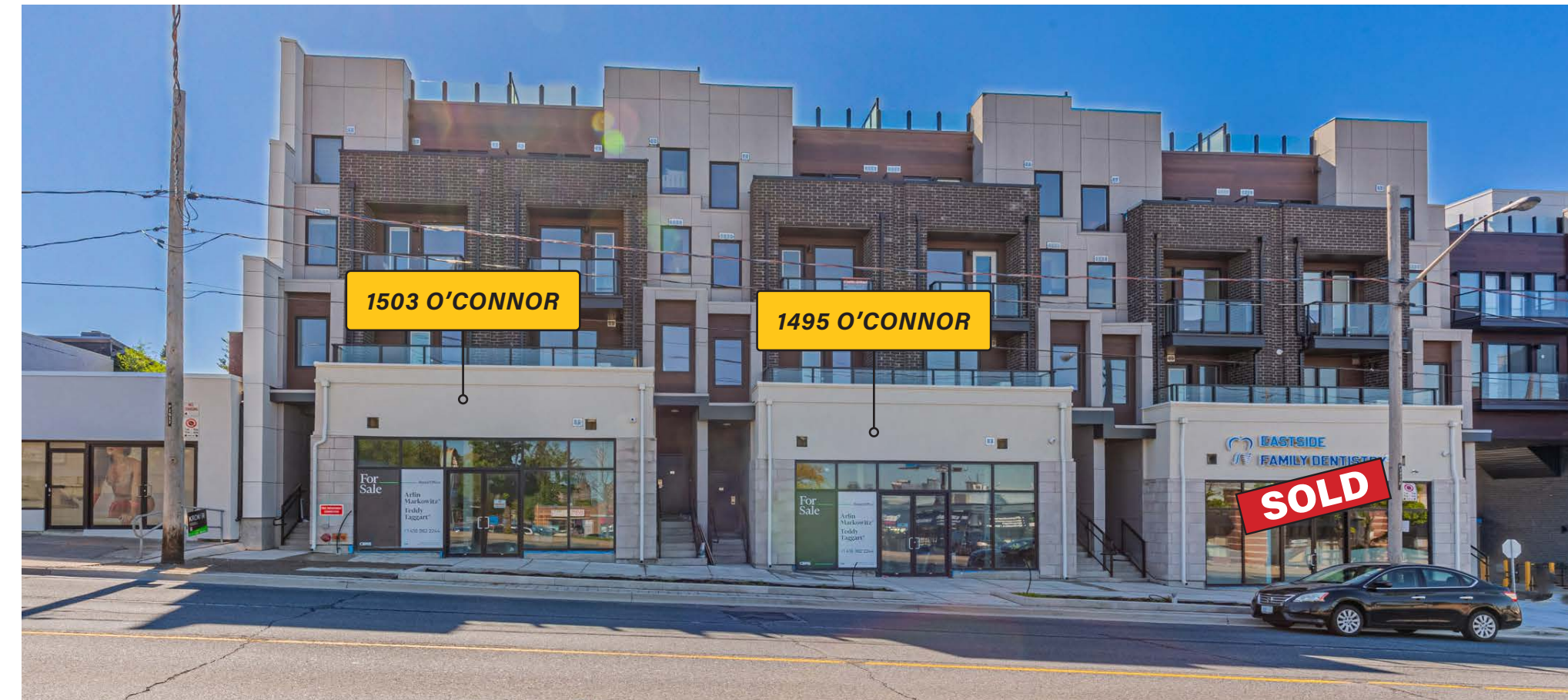
## **RIGHT-SIZED UNITS**

920 sq. ft. (per unit) of brand-new vacant commercial space perfect for an investor or end-user. The space is suitable for an array of uses including medical, food & beverage, retail or office uses.



## **INCREDIBLE DESIGN**

Beautifully designed commercial space with modern, sleek facades, with high 14.8 ft. ceilings and large windows allowing for ample natural light.





1503 O'CONNOR



1495 O'CONNOR





# Site Plan *1495 & 1503 O'Connor Drive*



Commercial tenants can purchase assigned underground parking spaces (subject to availability).

Purchasers have access to 9 shared on-site commercial/visitor parking spaces behind the building.

1495 & 1503 O'CONNOR DRIVE, TORONTO



**AMSTERDAM**  
URBAN TOWNHOMES

CBRE LIMITED



# Location Overview

1495 & 1503 O'Connor Drive is located in the eastern part of Toronto, situated approximately 10 kilometers from downtown Toronto. The property is conveniently close to the **Don Valley Parkway (DVP)**, offering quick access to major highways. It's also near **The Danforth**, known for its vibrant community and cultural scene. **Eglinton Square** and **Eglinton Town Centre** are within a short drive, providing a variety of retail and dining options. Additionally, the **Golden Mile**, a well-established commercial and retail area, is nearby. Notably, the property is within walking distance to the future **Eglinton Crosstown LRT** (O'Connor Station), which will enhance transit connectivity and accessibility to other parts of the city.

## DEMOGRAPHICS

\$94,423

Average Household Income (2022)

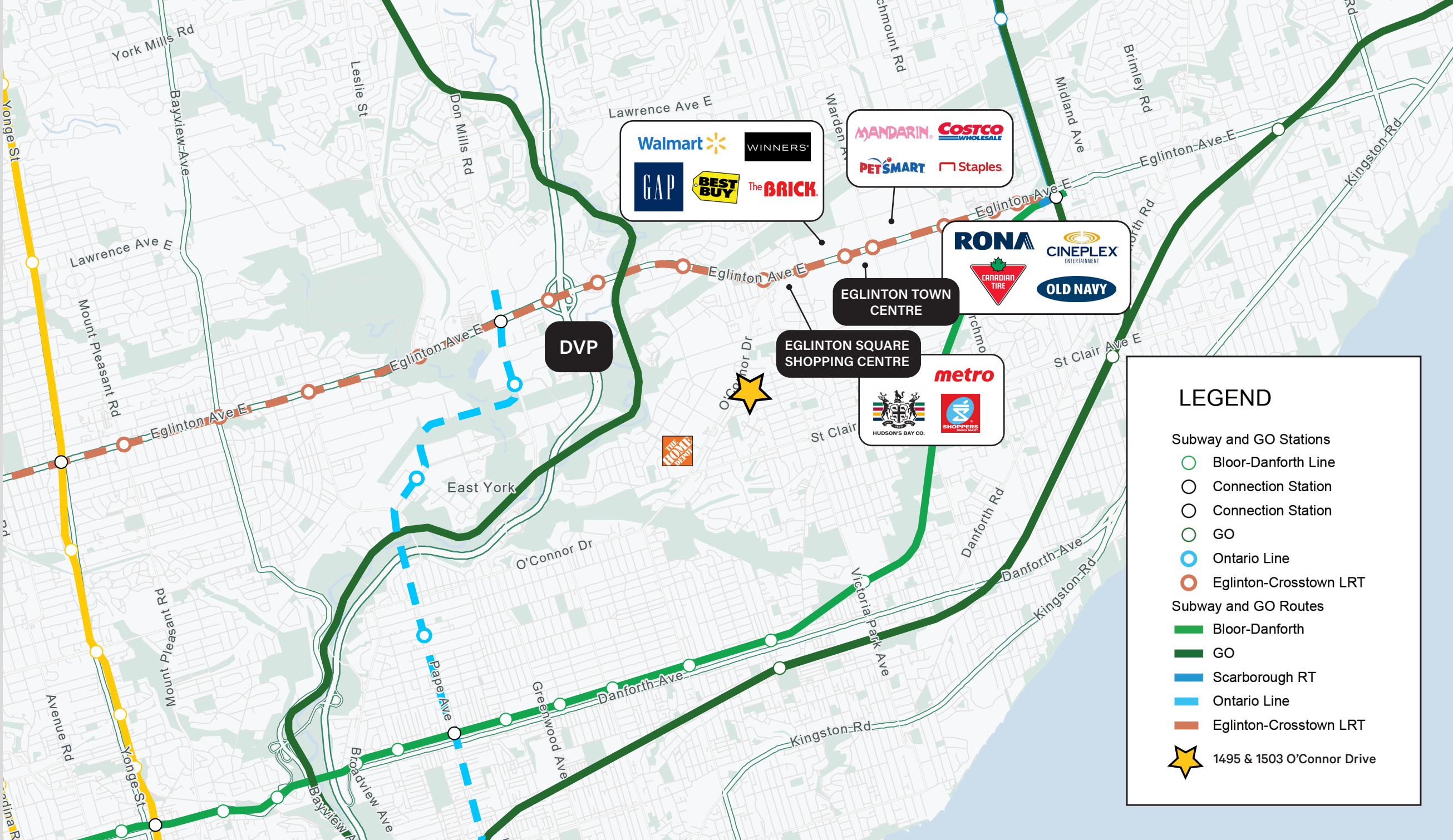
160,065

Population (2022)

2.7%

Population Change % (2017-2022)

\*5KM RADIUS



# Advisory Team

ARLIN MARKOWITZ\*  
Executive Vice President  
416 815 2374  
arlin.markowitz@cbre.com

ALEX EDMISON\*  
Senior Vice President  
416 874 7266  
alex.edmison@cbre.com

JACKSON TURNER\*\*  
Senior Vice President  
416 815 2394  
jackson.turner@cbre.com

EMILY EVERETT\*  
Sales Associate  
647 943 4185  
emily.everett@cbre.com

\*Sales Representative

\*\*Broker

**CBRE** urban retail team

This disclaimer shall apply to CBRE Limited, Real Estate Brokerage, and to all other divisions of the Corporation; to include all employees and independent contractors ("CBRE"). The information set out herein, including, without limitation, any projections, images, opinions, assumptions and estimates obtained from third parties (the "Information") has not been verified by CBRE, and CBRE does not represent, warrant or guarantee the accuracy, correctness and completeness of the Information. CBRE does not accept or assume any responsibility or liability, direct or consequential, for the Information or the recipient's reliance upon the Information. The recipient of the Information should take such steps as the recipient may deem necessary to verify the Information prior to placing any reliance upon the Information. The Information may change and any property described in the Information may be withdrawn from the market at any time without notice or obligation to the recipient from CBRE. CBRE and the CBRE logo are the service marks of CBRE Limited and/or its affiliated or related companies in other countries. All other marks displayed on this document are the property of their respective owners. All Rights Reserved.