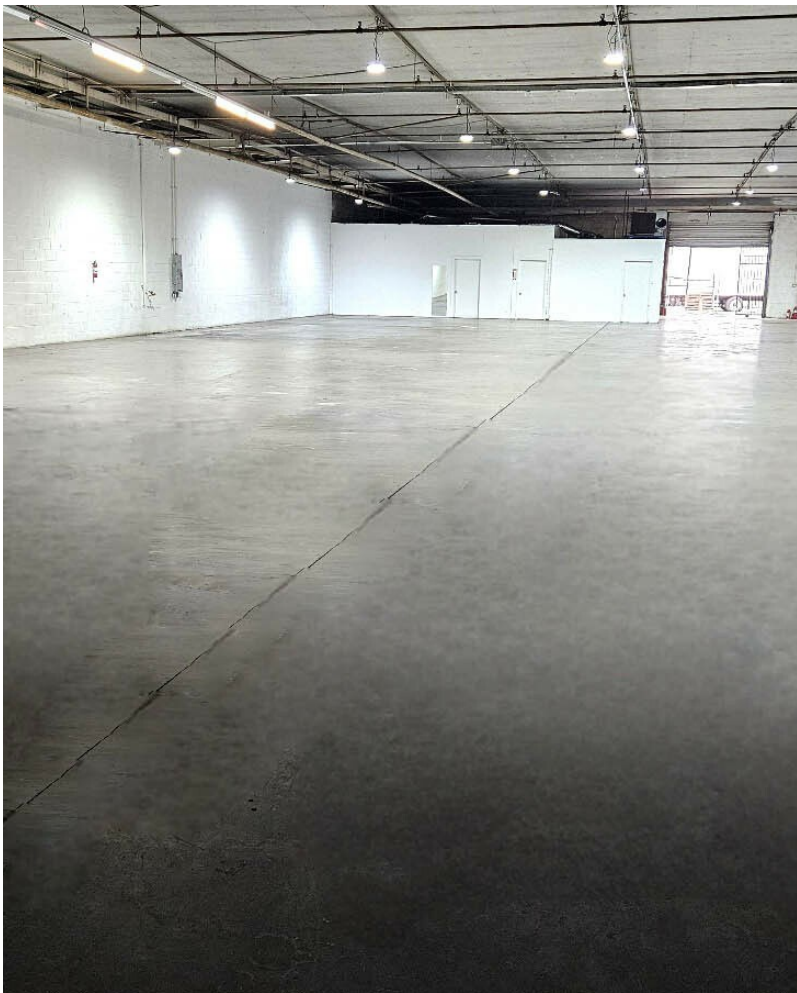


1100 E 16th St., Unit C

1100 E 16th St, Unit C, Los Angeles, CA 90021



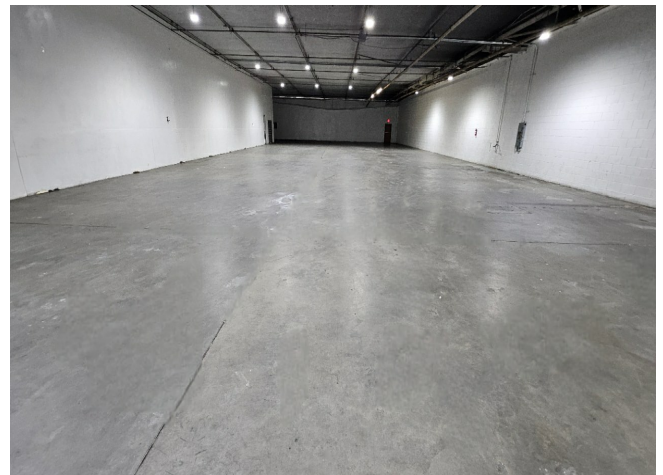
Bryant T. Chung, CEO & President
Magic Properties, Inc.
1601 Griffith Ave, Los Angeles, CA 90021
bryantchung@sbcglobal.net
(213) 503-8007



1100 E 16th St

\$0.95/SF/MO

* 10,000 SF Portion of a Larger Building* \$9,500.00 per Month, Gross..* Southeast Corner of 16th Street & Paloma (Between San Pedro St. & Central Ave.)* Just 1 Minute to the Fashion District* Wide-Open, Clear-Span Warehouse – (No Interior Posts).* Approx. 16 ft Ceiling Height.* Sprinklered.* 600+ Amps of Power.* 10+ On-Site Parking Spaces.* Approx. 500 Sq. Ft. Office Area.* Built in 1978.* Available for Immediate Occupancy.* Text/call Bryant @ (213) 503-8007 for Showing Instructions....



Rental Rate: \$0.95/SF/Month

Property Type: Industrial

Property Subtype: Warehouse

Rentable Building Area: 9,500 SF

Year Built: 1978

Rental Rate Mo: \$0.95 /SF/MO

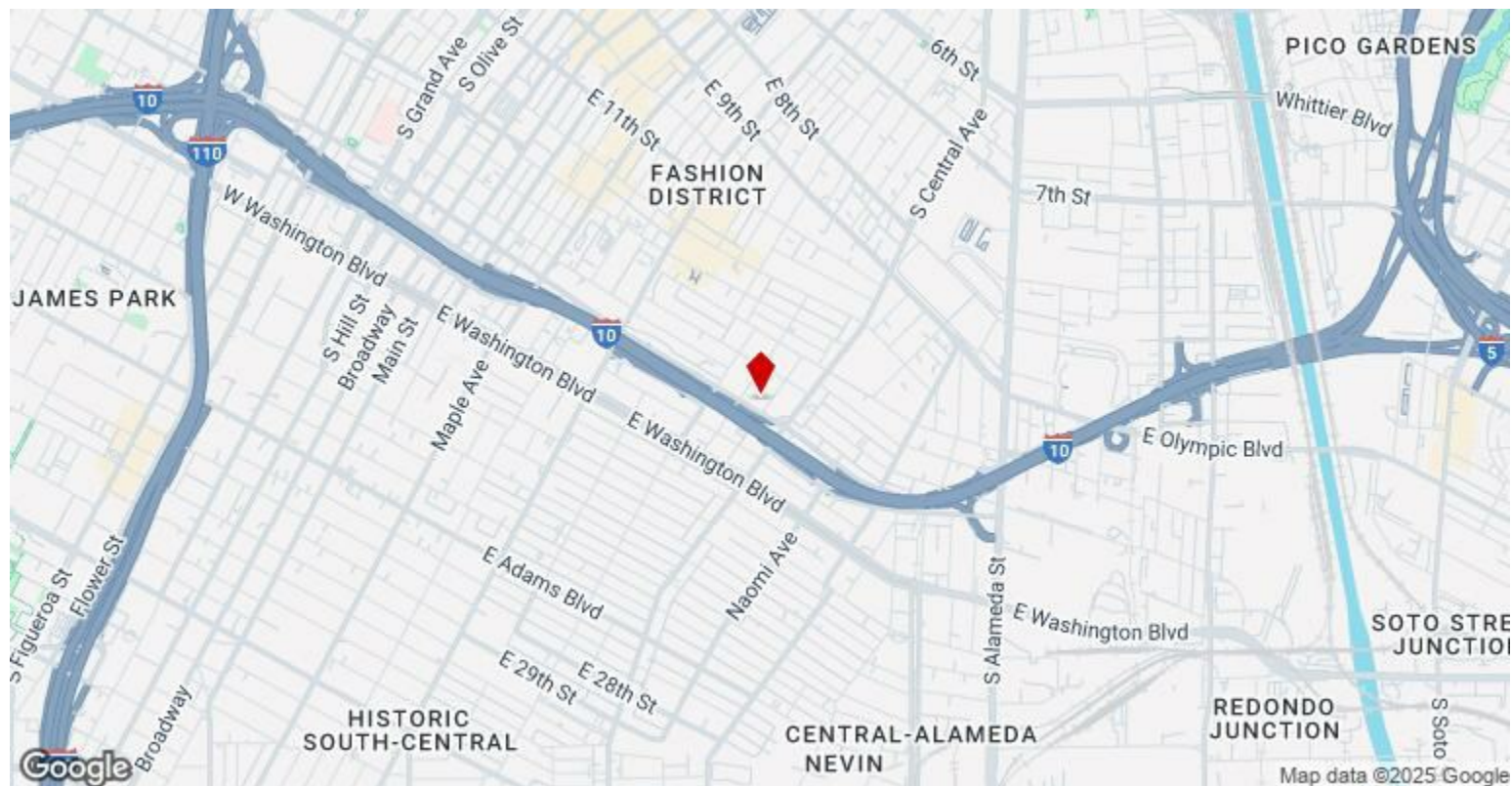
1st Floor Ste C

Space Available	10,000 SF
Rental Rate	\$0.95/SF/Month
Date Available	Now
Ceiling Hts & Parking	16 Ft & 10+ Spaces
Office Size	500 SF
Space Shape	No Posts, Wide Open, Rectangular Shape
Power Capacity	800 Amps+
Lease Term	3 - 5 Years

* 10,000 SF Portion of a Larger Building * \$9,500.00 per Month, Gross.* Southeast Corner of 16th Street & Paloma (Between San Pedro St. & Central Ave.)* Just 1 Minute to the Fashion District.* Wide-Open, Clear-Span Warehouse – No Interior Posts.* Approx. 16 ft Ceiling Height.* Sprinklered,* 600+ Amps of Power.* 10+ On-Site Parking Spaces.* Approx. 500 Sq. Ft. Office Area.* Built in 1978.* Available for Immediate Occupancy.* Text/call Bryant @ (213) 503-8007 for Showing Instructions.

Major Tenant Information

Tenant	SF Occupied	Lease Expired
Pegaso Packing	-	Current
Dazz	-	Yes
	-	



1100 E 16th St, Los Angeles, CA 90021

- * 10,000 SF Portion of a Larger Building
- * \$9,500.00 per Month, Gross..
- * Southeast Corner of 16th Street & Paloma (Between San Pedro St. & Central Ave.)
- * Just 1 Minute to the Fashion District
- * Wide-Open, Clear-Span Warehouse – (No Interior Posts).
- * Approx. 16 ft Ceiling Height.
- * Sprinklered.
- * 600+ Amps of Power.
- * 10+ On-Site Parking Spaces.
- * Approx. 500 Sq. Ft. Office Area.
- * Built in 1978.
- * Available for Immediate Occupancy.
- * Text/call Bryant @ (213) 503-8007 for Showing Instructions.

Property Photos



Property Photos



20250721_112927



20250721_113058

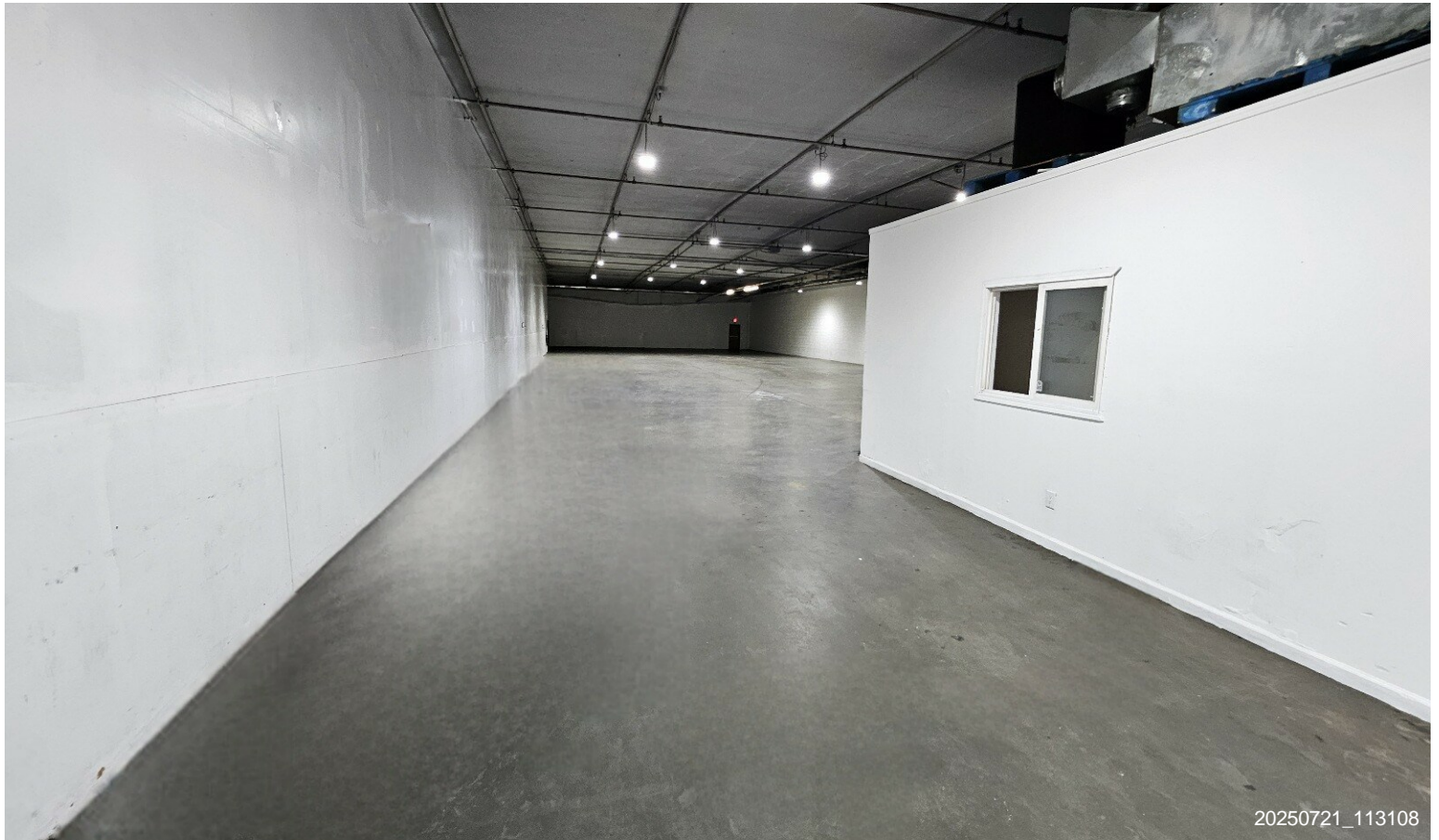
Property Photos



Property Photos



Property Photos



Property Photos



Property Photos



20250721_113529