

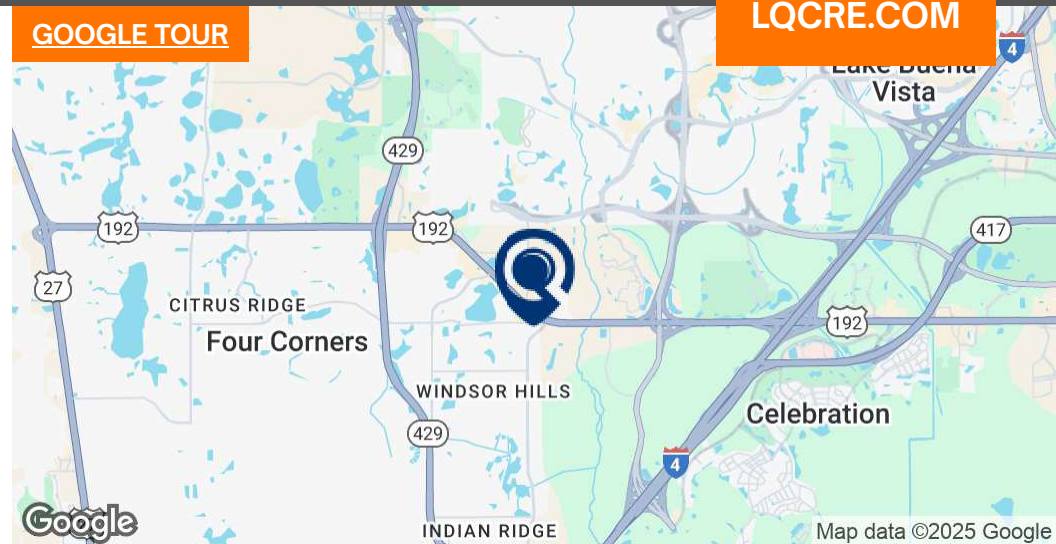
LAKE WILSON VILLAGE

SWQ US 192 & Old Lake Wilson Rd | Kissimmee, FL 34747 - Heart of Orlando MSA Tourist Market
Ground Lease Pad Sites & Hotel Pad For Sale



LQ Commercial
REAL ESTATE SERVICES

LQCRE.COM



COMMERCIAL-ZONING:
RETAIL | F&B | HOTELS



PAD SITES FROM
0.785 - 5.2 AC



CALL FOR GROUND LEASE RATES
OR SALE PRICE FOR HOTEL PAD

- Now leasing "Lake Wilson Village" ground lease pad sites, from 0.785 - 5.2 AC
- 2.69 AC hotel pad for lease or sale.
- Dense tourist area - near Disney World - optimal for retail / restaurant / hotel users.
- Along US 192 and across from #3 busiest Walmart Supercenter in America!
- Affluent, growing demographics (2.4% pop increase by 2030) PLUS tourism traffic.



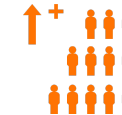
TOTAL POPULATION
64,665



5-YR POP INCREASE
2.4%



AVG HH INCOME
\$119,764



EMPLOYEES
26,205

[PROPERTIES.LQCRE.COM/LAKE-WILSON-VILLAGE](https://properties.lqcre.com/lake-wilson-village)

LQ Commercial
REAL ESTATE SERVICES
500 Winderley Pl #104
Maitland, FL 32751
LQCRE.COM

Julia Sosa
Founding Principal - Orlando
D: 407.775.4358
C: 407.257.8246
jsosa@lqcre.com

Tom Heer
Senior Associate
D: 407.775.4361
C: 407.399.6748
theer@lqcre.com

Eva Royal
Principal, Senior Associate
D: 407.705.2217
C: 407.421.3532
eroyal@lqcre.com

LAKE WILSON VILLAGE

SWQ US 192 & Old Lake Wilson Rd | Kissimmee, FL 34747 - Heart of Orlando MSA Tourist Market
Ground Lease Pad Sites & Hotel Pad For Sale



LQ Commercial
REAL ESTATE SERVICES

LQCRE.COM



500 Winderley Pl #104
Maitland, FL 32751
LQCRE.COM

Julia Sosa
Founding Principal - Orlando
D: 407.775.4358
C: 407.257.8246
jsosa@lqcre.com

Tom Heer
Senior Associate
D: 407.775.4361
C: 407.399.6748
their@lqcre.com

Eva Royal
Principal, Senior Associate
D: 407.705.2217
C: 407.421.3532
eroyal@lqcre.com

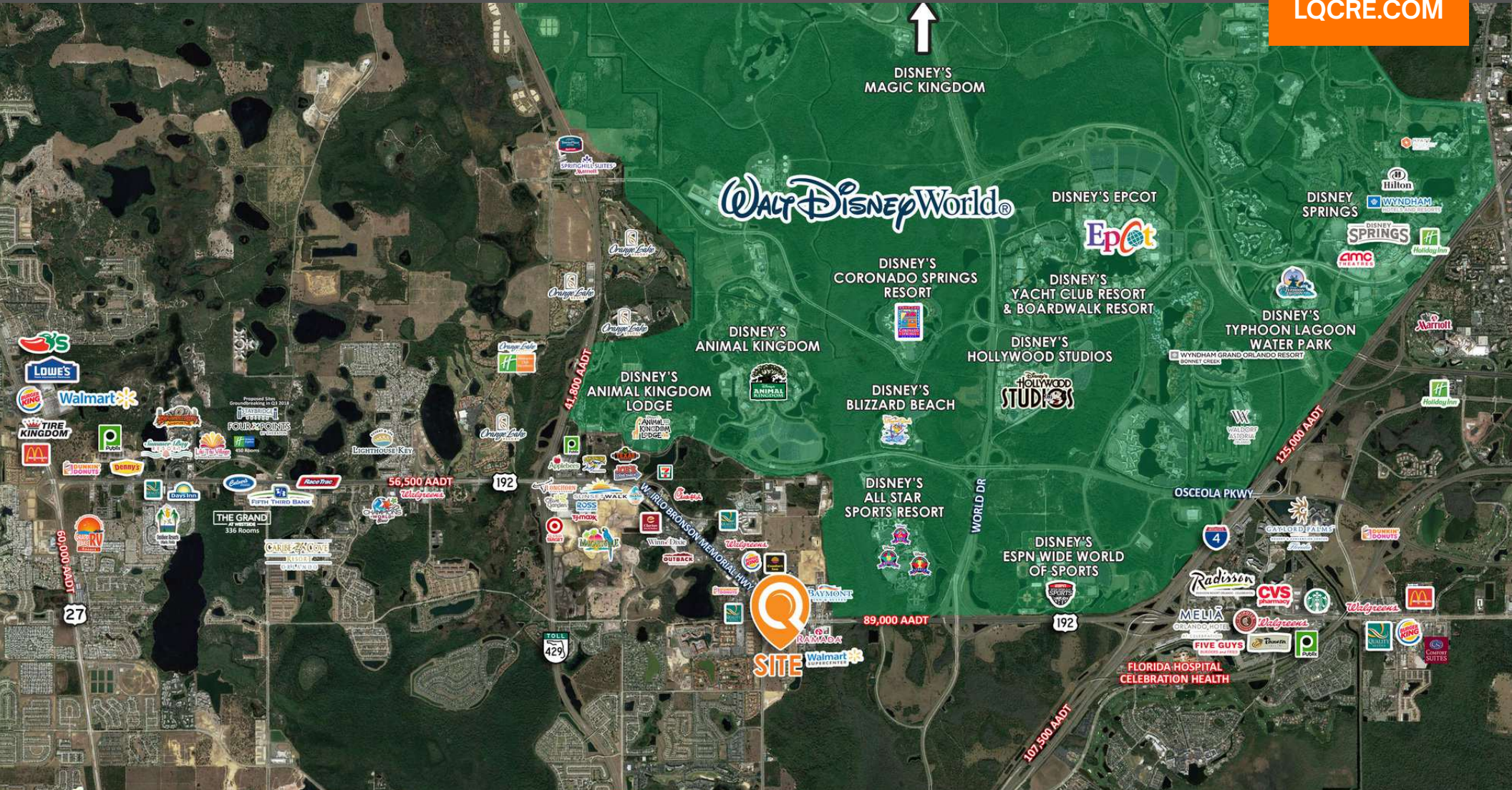
LAKE WILSON VILLAGE

SWQ US 192 & Old Lake Wilson Rd | Kissimmee, FL 34747 - Heart of Orlando MSA Tourist Market
Ground Lease Pad Sites & Hotel Pad For Sale



LQ Commercial
REAL ESTATE SERVICES

LQCRE.COM



 **LQ Commercial**
REAL ESTATE SERVICES
500 Winderley Pl #104
Maitland, FL 32751
LQCRE.COM

Julia Sosa
Founding Principal - Orlando
D: 407.775.4358
C: 407.257.8246
jsosa@lqcre.com

Tom Heer
Senior Associate
D: 407.775.4361
C: 407.399.6748
theer@lqcre.com

Eva Royal
Principal, Senior Associate
D: 407.705.2217
C: 407.421.3532
eroyal@lqcre.com

