

FOR LEASE

1121 VINE STREET, STE. 14

MEDICAL SUITE FOR LEASE ± 1,830 SF

LODI, CALIFORNIA

LEASE RATE: NEGOTIABLE



- Medical Suite w/ potential for many use types
- Located Directly Across From Adventist Health - Lodi Memorial Hospital
- Abundant Parking On-site and Street Parking Available
- Centrally Located in Lodi, CA
- Lease Rate: Negotiable – Contact Listing Agents

FOR MORE INFORMATION
CONTACT:

PARTNERS
COMMERCIAL

Suzanne Grande
209.483.8999
Lic. 01080467
Suzanne@partnersreinc.com

Lorie Liddicoat
209.915.9913
Lic. 01952818
Lorie@PartnersCommercialRE.Com

1121 W VINE STREET, STE. 14

MEDICAL SUITE FOR LEASE ± 1,830 SF

LODI, CALIFORNIA

LOCATED DIRECTLY ACROSS FROM ADVENTIST HEALTH –LODI MEMORIAL HOSPITAL

SUITE FEATURES:

- Lease Rate: Negotiable Contact Listing Agents
- Large waiting room
- Open reception area
- Two (2) restrooms within suite
- Three (3) exam rooms
- Two large offices that can be converted into exam rooms
- Storage area
- Break area with sink
- Lab / Nurses Station
- Parking Ratio: 5/1,000 SF
- Zoning: O -Office (City of Lodi)
- Located across the street from Adventist Health – Lodi Memorial Hospital



All information found in this marketing package have been gathered from resources believed to be reliable. Brokers and Agents do not warrant, guarantee or represent the accuracy of the Information and recommend that all information be verified prior to a transaction.

FOR MORE INFORMATION
CONTACT:

PARTNERS
COMMERCIAL

Suzanne Grande
209.483.8999
Lic. 01080467
Suzanne@partnersreinc.com

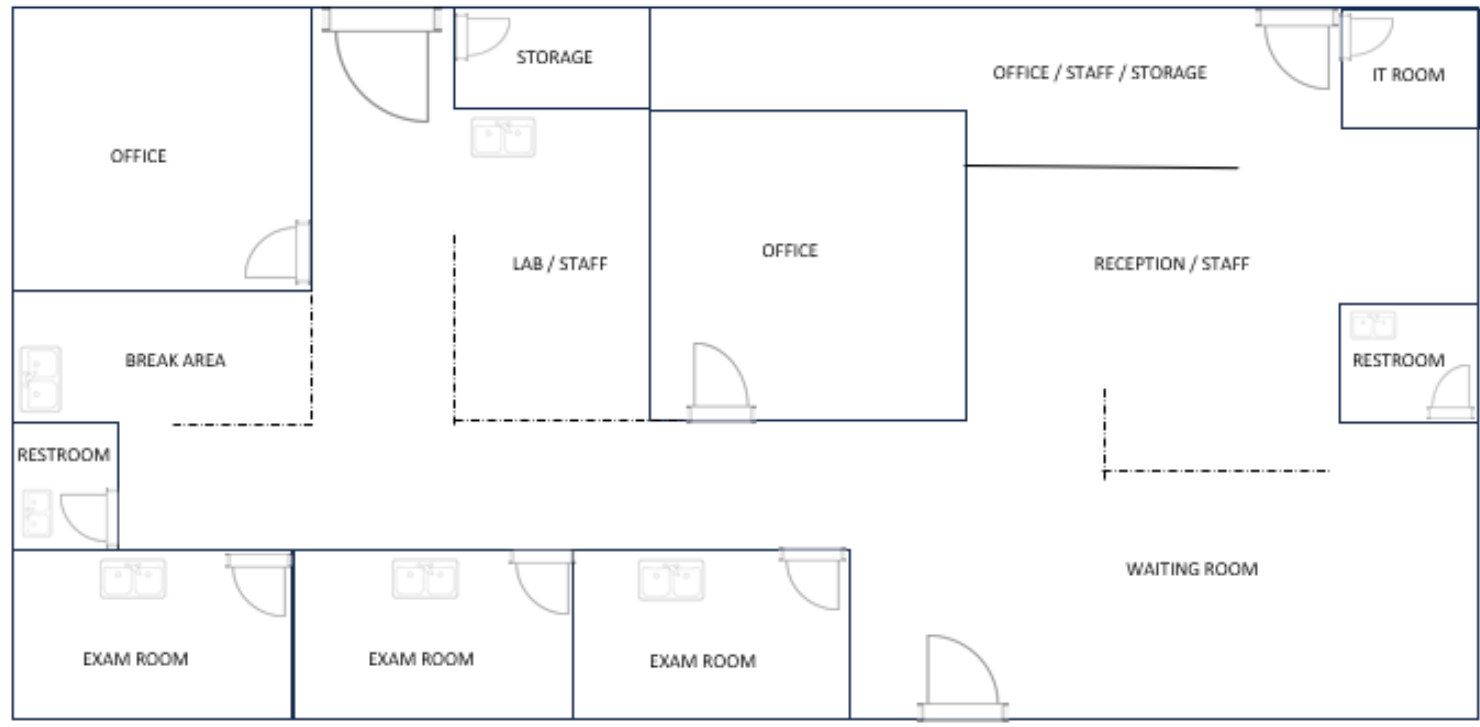
Lorie Liddicoat
209.915.9913
Lic. 01952818
Lorie@PartnersCommercialRE.Com

1121 VINE STREET, STE. 14

MEDICAL SUITE FOR LEASE ± 1,830 SF

LODI, CALIFORNIA

*FLOOR PLAN LAYOUT NOT TO SCALE



VINE STREET

FOR MORE INFORMATION
CONTACT:



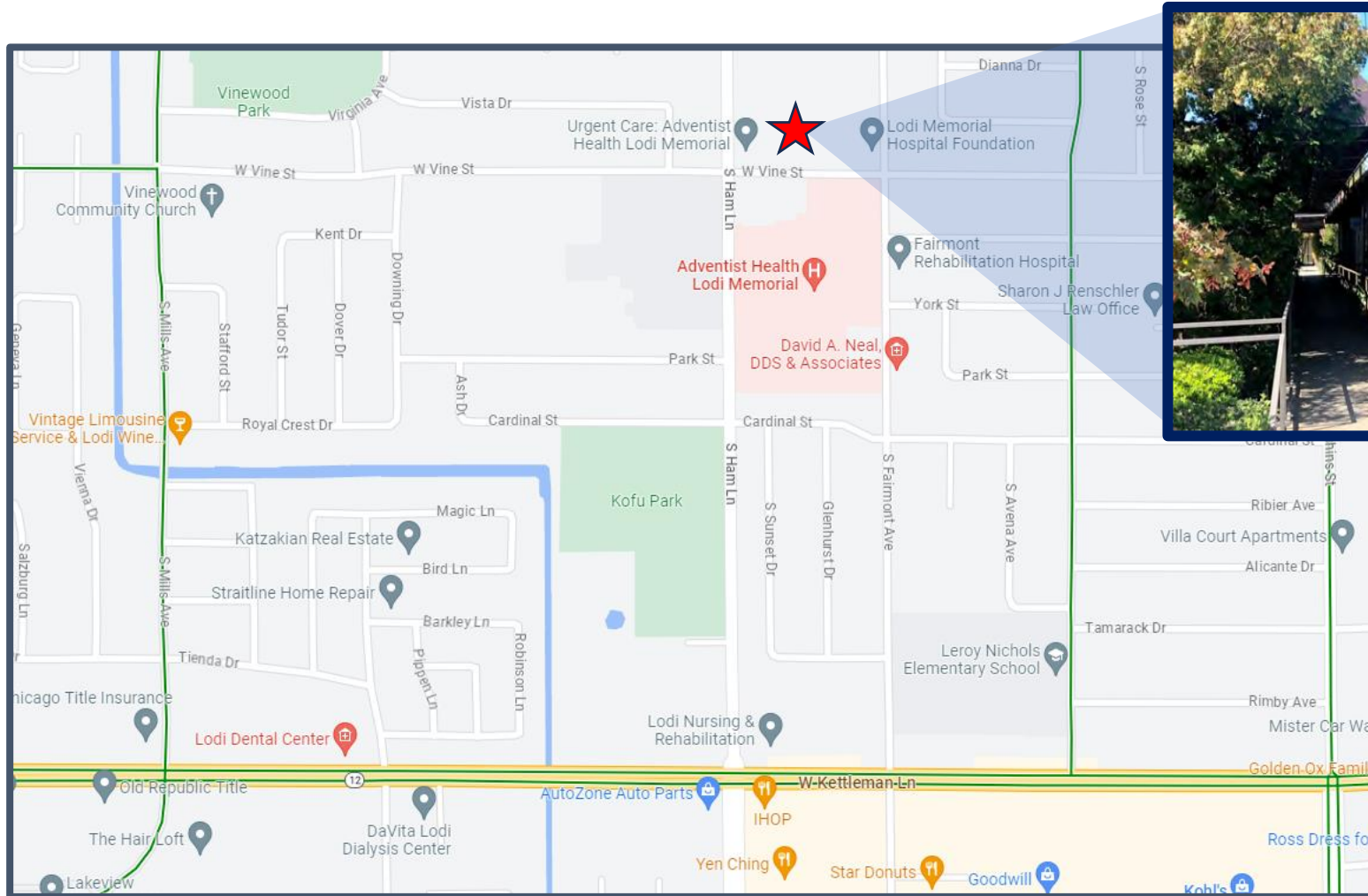
Suzanne Grande
209.483.8999
Lic. 01080467
Suzanne@partnersreinc.com

Lorie Liddicoat
209.915.9913
Lic. 01952818
Lorie@PartnersCommercialRE.Com

1121 VINE STREET, STE. 14

MEDICAL SUITE FOR LEASE ± 1,8350 SF

LODI, CALIFORNIA



**FOR MORE INFORMATION
CONTACT:**



Suzanne Grande
209.483.8999
Lic. 01080467
Suzanne@partnersreinc.com

Lorie Liddicoat
209.915.9913
Lic. 01952818
Lorie@PartnersCommercialRE.Com